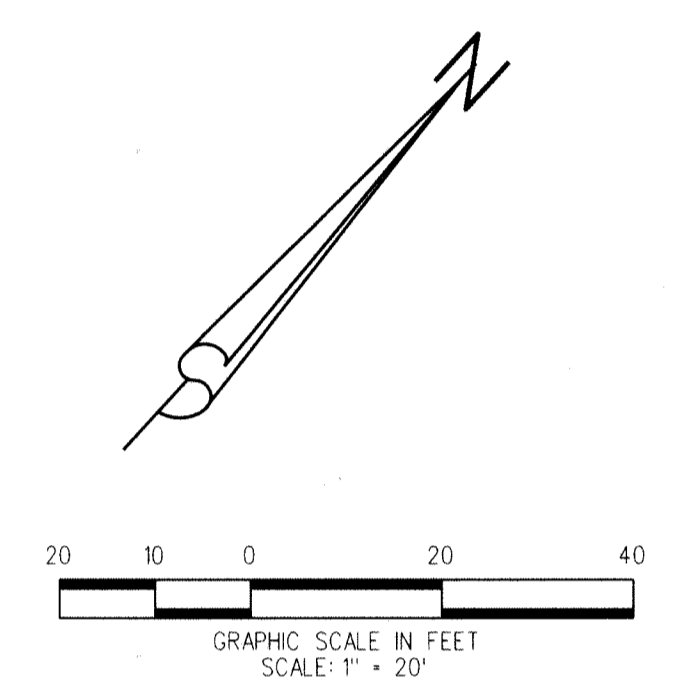
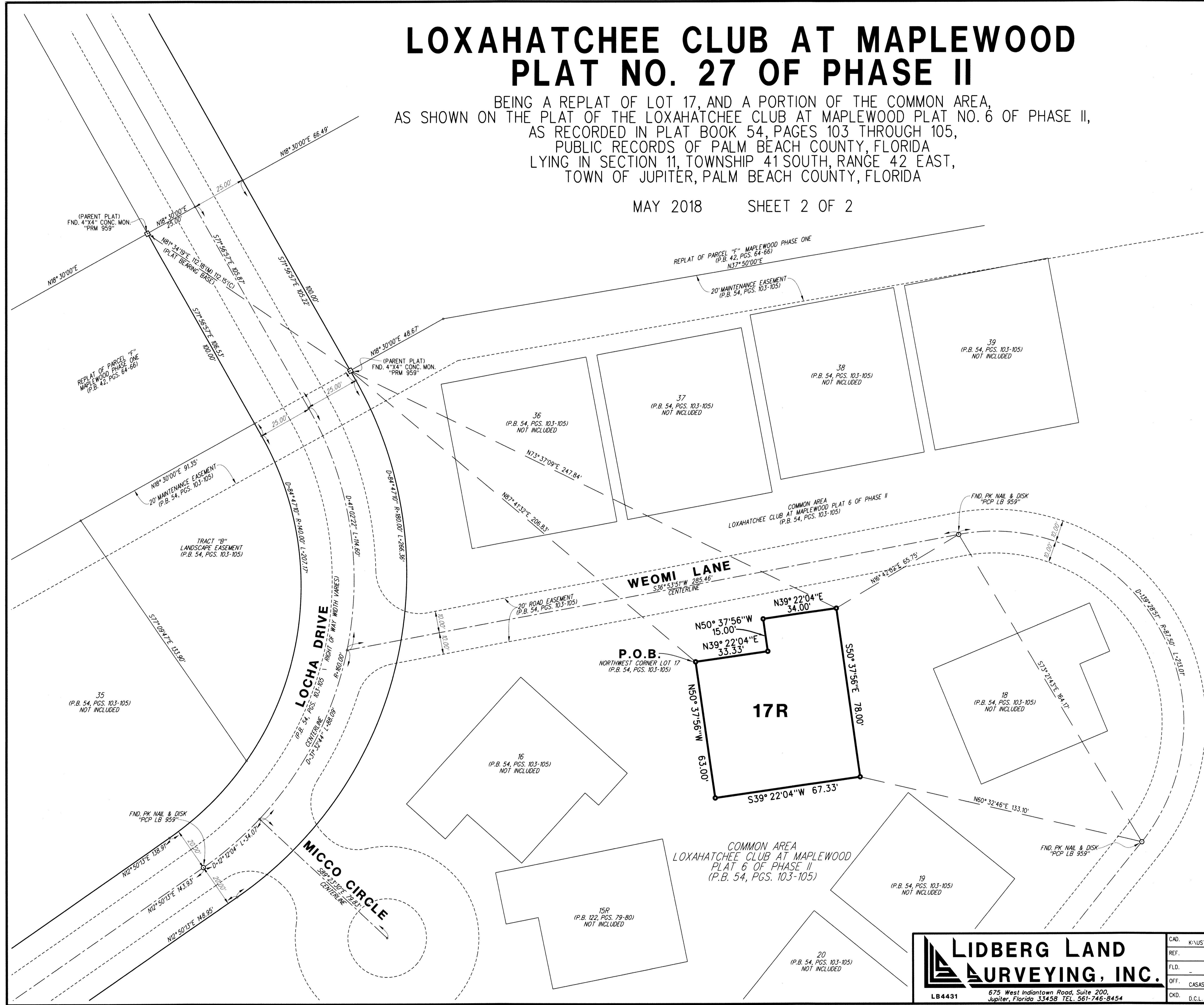


45

LOXAHATCHEE CLUB AT MAPLEWOOD PLAT NO. 27 OF PHASE II

BEING A REPLAT OF LOT 17, AND A PORTION OF THE COMMON AREA,
AS SHOWN ON THE PLAT OF THE LOXAHATCHEE CLUB AT MAPLEWOOD PLAT NO. 6 OF PHASE II,
AS RECORDED IN PLAT BOOK 54, PAGES 103 THROUGH 105,
PUBLIC RECORDS OF PALM BEACH COUNTY, FLORIDA
LYING IN SECTION 11, TOWNSHIP 41 SOUTH, RANGE 42 EAST,
TOWN OF JUPITER, PALM BEACH COUNTY, FLORIDA

MAY 2018 SHEET 2 OF 2



- ABBREVIATIONS:**
- (C) = CALCULATED DISTANCE
 - (M) = MEASURED DISTANCE
 - D = DELTA
 - L = ARC LENGTH
 - O.R.B. = OFFICIAL RECORD BOOK
 - P.C.P. = PERMANENT CONTROL POINT
 - P.B. = PLAT BOOK
 - PGS. = PAGES
 - P.O.B. = POINT OF BEGINNING
 - P.O.C. = POINT OF COMMENCEMENT
 - P.R.M. = PERMANENT REFERENCE MONUMENT
 - P.S.M. = PROFESSIONAL SURVEYOR AND MAPPER
 - R = RADIUS
- LEGEND:**
- = DENOTES SET PERMANENT REFERENCE MONUMENT - SET 5/8" IRON ROD & METAL CAP "PRM LB 4431"

**LIDBERG LAND
SURVEYING, INC.**

675 West Indiantown Road, Suite 200,
Jupiter, Florida 33458 TEL: 561-746-8454

CAD: K:\JUST \UST \ 114142 \ 54-103 \ 17-118-306 \ 17-118-306.DGN			
REF:			
FLD:	FB:	PG:	JOB: 17-118-306
OFF: CASASUS			DATE: MAY 2018
CKD: D.C.L.	SHEET: 2	OF: 2	DWG: D17-118P