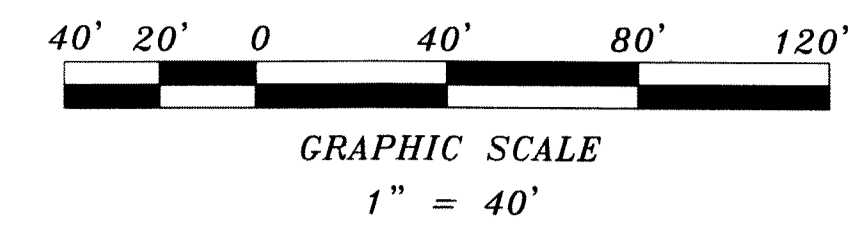


Toscana Isles P.U.D. - Plat II

Being a replat of a portion of the amended plat of the Mary A. Lyman Subdivision of Section 12, Township 45 South, Range 42 East, according to the plat thereof, as recorded in Plat Book 9, Page 74, of the Public Records of Palm Beach County, Florida



86

Sheet 3 of 3



Amended Plat of Mary A. Lyman
(P.B. 9, Pg. 74, P.B.C.R.)

Tract L-2
Subject to existing littoral zone Restrictive Covenant Agreement as recorded in Official Records Book 29582, Page 1825, of the Public Records of Palm Beach County, Florida.

Tract L-3
Toscana Isles P.U.D. - Plat I
(P.B. 116, Pgs. 133-136)

Tract L-4
Toscana Isles P.U.D. - Plat I
(P.B. 116, Pgs. 133-136)

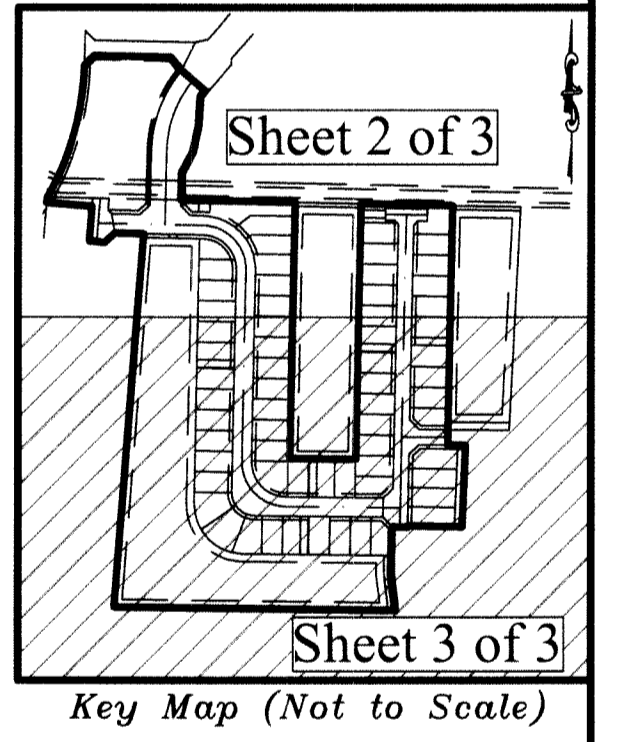
Tract OS-3
Toscana Isles P.U.D. - Plat I
(P.B. 116, Pgs. 133-136)

Tract L-2
Subject to existing littoral zone Restrictive Covenant Agreement as recorded in Official Records Book 29582, Page 1825, of the Public Records of Palm Beach County, Florida.

Amended Plat of Mary A. Lyman
(P.B. 9, Pg. 74, P.B.C.R.)

Legend

- P.O.B. = Point of Beginning
- P.O.C. = Point of Commencement
- P.B. = Plat Book
- Pg. = Page
- O.R.B. = Official Records Book
- P.B.C.R. = Palm Beach County Records
- R = Radius
- L = Arc Length
- D = Delta (Central Angle)
- CB = Chord Bearing
- CD = Chord Distance
- U.E. = Utility Easement
- LAE = Limited Access Easement
- LME = Lake Maintenance Easement
- P.R.M. = Set 4" x 4" x 24" concrete Permanent Reference Monument with aluminum cap marked LB 7682 (unless noted otherwise)
- Permanent Control Point = Set nail and 1" aluminum cap marked LB 7682
- P.U.D. = Planned Unit Development
- ⊕ = Centerline
- LMAE = Lake Maintenance Access Easement
- (N.R.) = Non-radial line
- O.H.E. = Overhang Easement
- P.R.A.S. = Private Residential Access Street
- Section 12-45-42 = Section, Township and Range



DJG Surveying and Mapping, Inc.
 LB#7682
 6750 NW 9th Court Margate, Florida 33063
 Phone: (954) 675-7244 Email: admin@djgsurvey.com

PRM
N 812816.09
E 943443.76

PRM
N 813025.22
E 944354.59

PRM
N 812807.37
E 944180.61