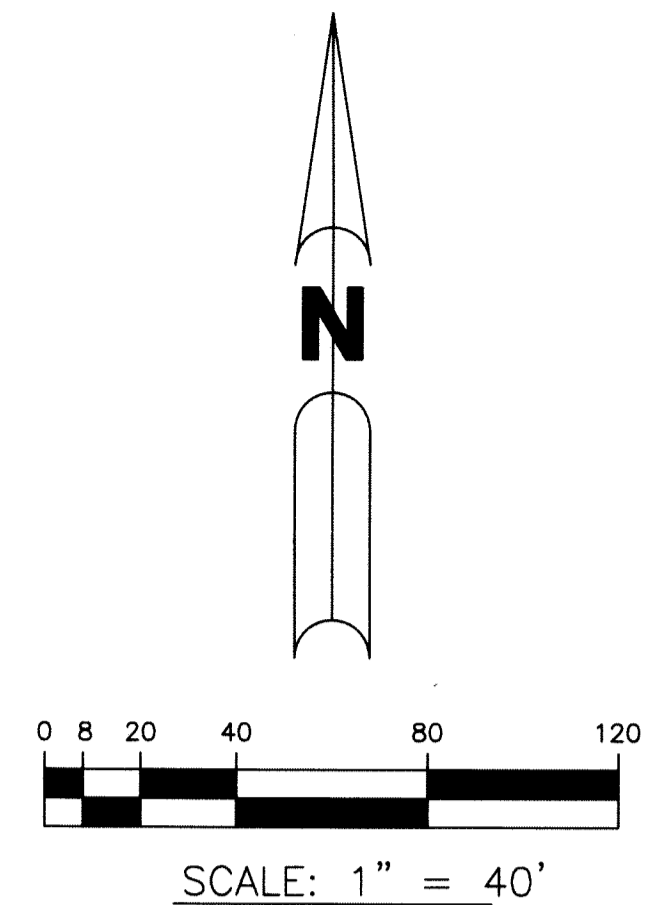


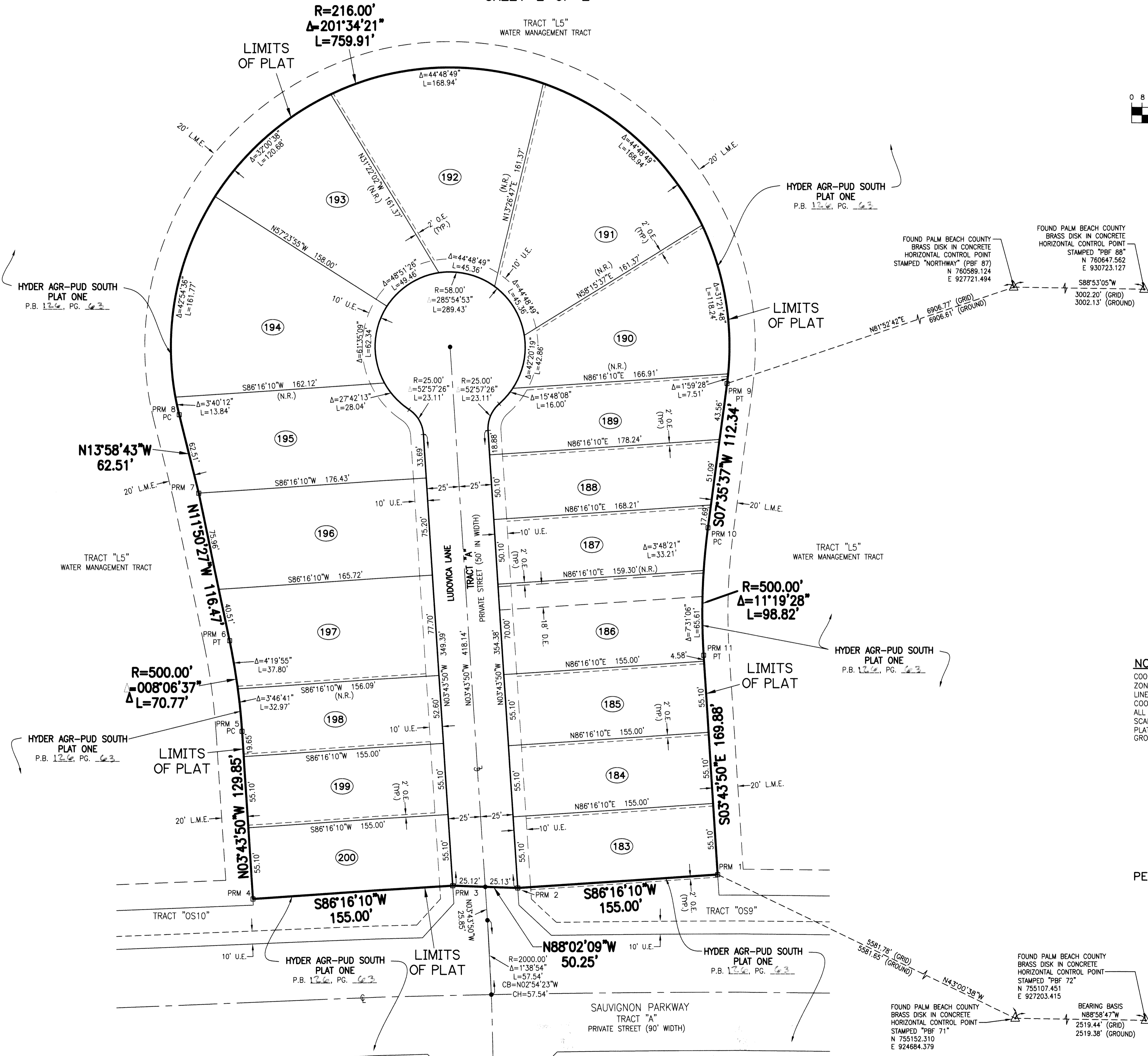
# HYDER AGR-PUD SOUTH PLAT TWO

BEING A REPLAT OF ALL OF TRACT C, HYDER AGR-PUD SOUTH PLAT ONE, AS RECORDED IN PLAT BOOK 126, PAGES 63 THROUGH 77, PUBLIC RECORDS, PALM BEACH COUNTY, FLORIDA, LYING IN SECTION 31, TOWNSHIP 46 SOUTH, RANGE 42 EAST.  
SHEET 2 OF 2

96



PRM	NORTHING	EASTING
PRM1	759233.870	920876.875
PRM2	759223.785	920722.120
PRM3	759225.507	920671.980
PRM4	759215.421	920517.305
PRM5	759345.003	920508.856
PRM6	759415.068	920499.276
PRM7	759529.065	920475.376
PRM8	759589.728	920460.275
PRM9	759613.362	920883.993
PRM10	759502.001	920869.147
PRM11	759403.391	920865.821



- LEGEND:**
- - SET PERMANENT REFERENCE MONUMENT
  - 4"x4" CONCRETE MONUMENT WITH 1.5" DISK STAMPED L.B. #7741
  - - FOUND PERMANENT REFERENCE MONUMENT
  - 4"x4" CONCRETE MONUMENT WITH 1.5" DISK STAMPED L.B. #7741
  - - SET PERMANENT CONTROL POINT
  - - FOUND PERMANENT CONTROL POINT
  - NAIL WITH 1.25" DISK STAMPED L.B. #7741
  - - FOUND PERMANENT CONTROL POINT
  - NAIL WITH 1.25" DISK STAMPED L.B. #7741
  - AGR - AGRICULTURAL
  - Δ - DELTA ANGLE
  - B.E. - BUFFER EASEMENT
  - BLK - BLOCK
  - CB - CHORD BEARING
  - CH - CHORD DISTANCE
  - CL - CENTERLINE
  - D.B. - DEED BOOK
  - D.E. - PRIVATE DRAINAGE EASEMENT
  - F.P.L. - FLORIDA POWER & LIGHT
  - F.L. - ARC LENGTH
  - L.A.E. - LIMITED ACCESS EASEMENT
  - L.M.A.E. - LAKE MAINTENANCE ACCESS EASEMENT
  - L.M.E. - LAKE MAINTENANCE EASEMENT
  - L.W.D. - LAKE WORTH DRAINAGE DISTRICT
  - N.R. - NOT RADIAL
  - N.T.S. - NOT TO SCALE
  - O.R.B. - OFFICIAL RECORD BOOK
  - O.E. - MAINTENANCE & ROOF OVERHANG EASEMENT
  - P.B.C.U.E. - PALM BEACH COUNTY UTILITY EASEMENT
  - P.B. - PLAT BOOK
  - P.C. - POINT OF CURVATURE
  - P.C.P. - PERMANENT CONTROL POINT
  - P.D.E. - PUBLIC DRAINAGE EASEMENT
  - P.G.S. - PAGES
  - PC - POINT OF CURVATURE
  - PT - POINT OF TANGENCY
  - PI - POINT OF INTERSECTION
  - PRC - POINT OF REVERSE CURVATURE
  - P.S.M. - PROFESSIONAL SURVEYOR AND MAPPER
  - PRM - PERMANENT REFERENCE MONUMENT
  - P.U.D. - PLANNED UNIT DEVELOPMENT
  - R - RADIUS
  - RAD - RADIAL
  - R/W - RIGHT-OF-WAY
  - R. D. & D. - ROAD, DYKE AND DITCH RESERVATION
  - S.T. - SURVEY TIE
  - TYP. - TYPICAL
  - U.E. - UTILITY EASEMENT

**NOTE:**  
 COORDINATES SHOWN ARE GRID COORDINATES DATUM = NAD 83 (1990 ADJUSTMENT)  
 ZONE = FLORIDA EAST ZONE  
 LINEAR UNIT = U.S. SURVEY FEET  
 COORDINATE SYSTEM = 1983 STATE PLANE TRANSVERSE MERCATOR PROJECTION  
 ALL DISTANCES ARE GROUND  
 SCALE FACTOR = 1.00002237  
 PLAT BEARING = GRID BEARING  
 GROUND DISTANCE X SCALE FACTOR = GRID DISTANCE

THIS INSTRUMENT WAS PREPARED BY  
 PERRY C. WHITE, P.S.M. 4213, STATE OF FLORIDA  
 SAND & HILLS SURVEYING, INC.  
 8461 LAKE WORTH ROAD, SUITE 410  
 LAKE WORTH, FLORIDA 33467  
 LB-7741