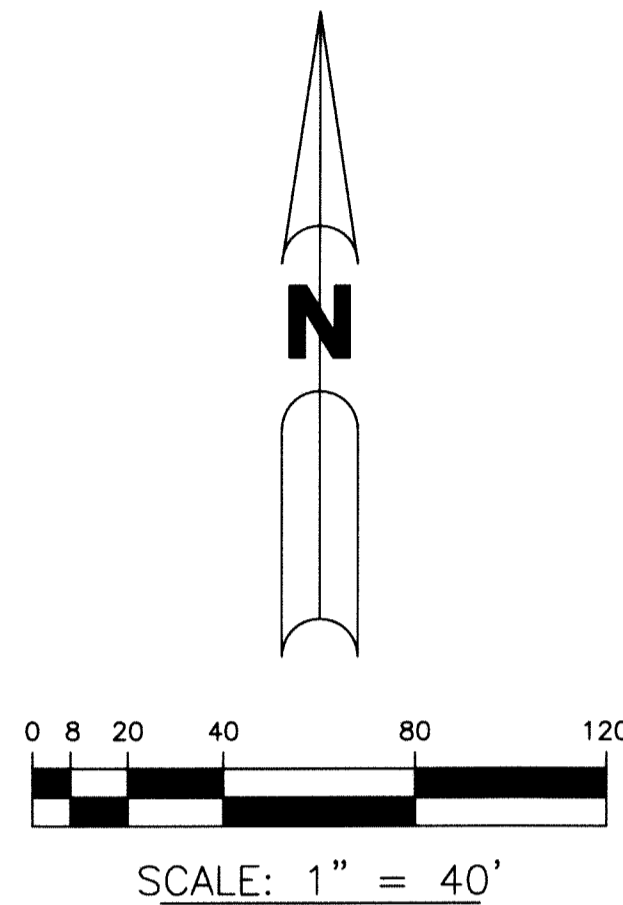


HYDER AGR-PUD SOUTH PLAT THREE

BEING A REPLAT OF ALL OF TRACTS 57 THROUGH 59, INCLUSIVE, A PORTION OF TRACTS 37 THROUGH 43, INCLUSIVE, TRACTS 55, 56, 60 AND A PORTION OF THE ABUTTING ROAD, DYKE AND DITCH RESERVATIONS, 30.00 FEET IN WIDTH, BLOCK 70, PALM BEACH FARMS CO. PLAT NO. 3, AS RECORDED IN PLAT BOOK 2, PAGES 45 THROUGH 54, PUBLIC RECORDS, PALM BEACH COUNTY, FLORIDA, LYING IN SECTION 31, TOWNSHIP 46 SOUTH, RANGE 42 EAST.

SHEET 3 OF 8

99

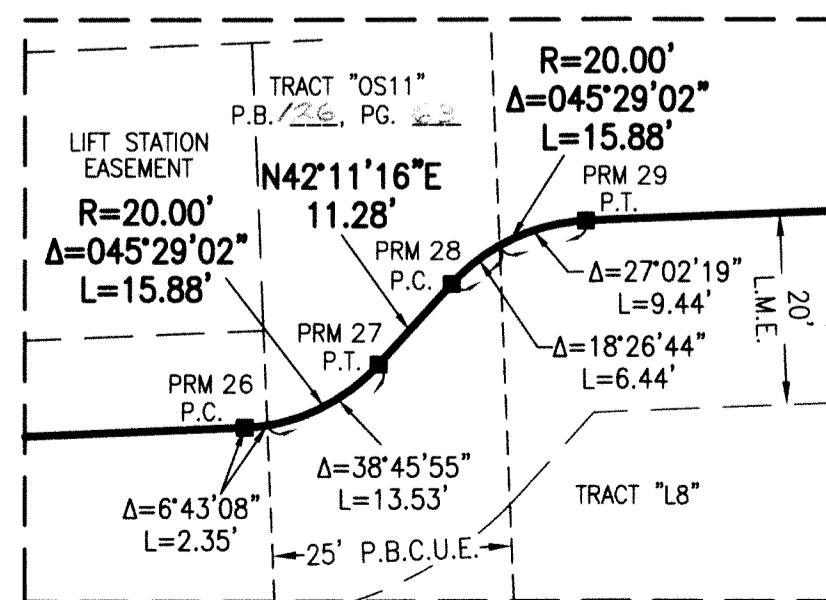


NOTE:

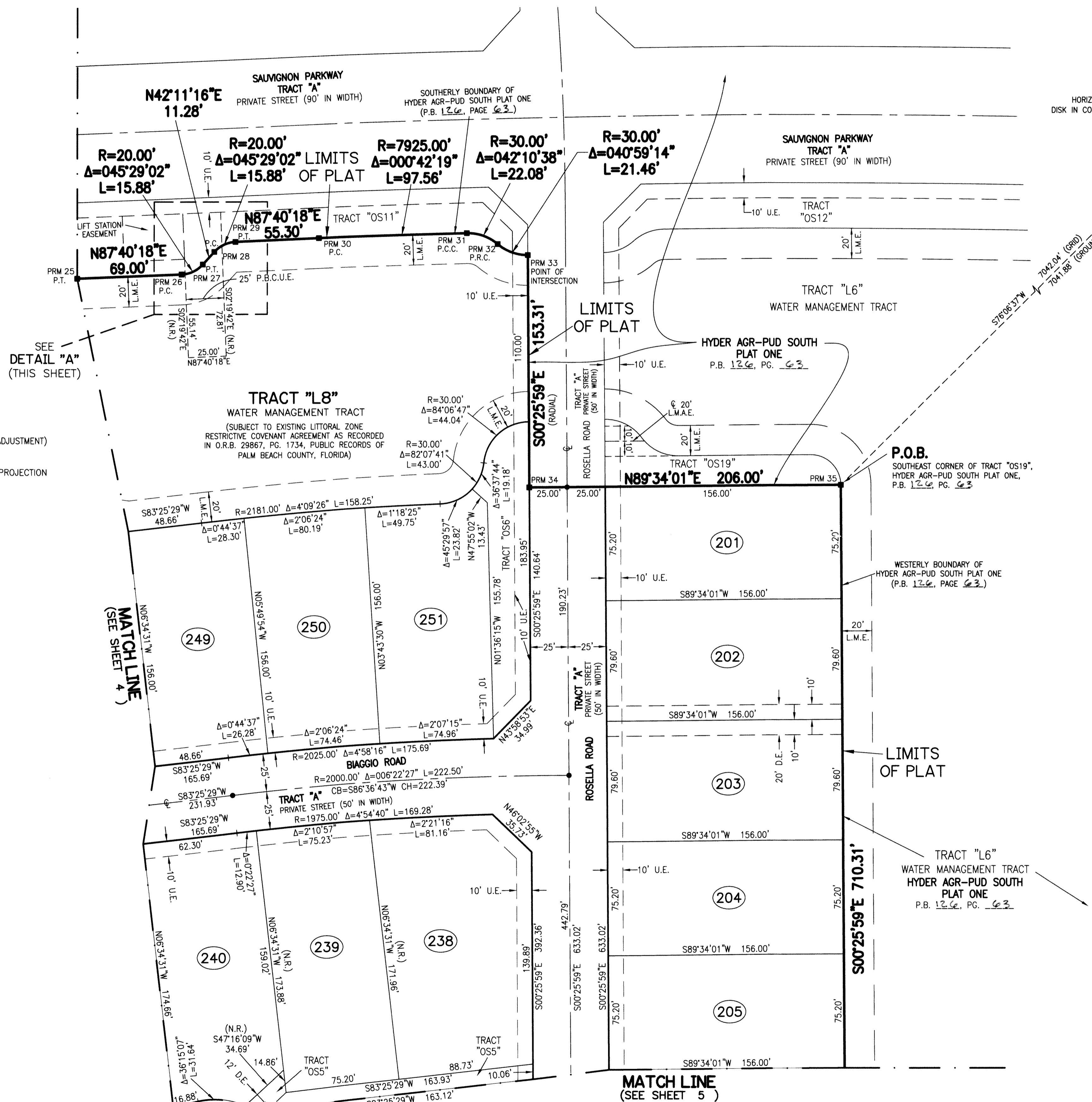
COORDINATES SHOWN ARE GRID COORDINATES DATUM = NAD 83 (1990 ADJUSTMENT)
 ZONE = FLORIDA EAST ZONE
 LINEAR UNIT = U.S. SURVEY FEET
 COORDINATE SYSTEM = 1983 STATE PLANE TRANSVERSE MERCATOR PROJECTION
 ALL DISTANCES ARE GROUND
 SCALE FACTOR = 1.00002237
 PLAT BEARING = GRID BEARING
 GROUND DISTANCE X SCALE FACTOR = GRID DISTANCE

STATE PLANE COORDINATE VALUE

PRM	NORTHING	EASTING
PRM25	759034.9404	920380.8196
PRM26	759037.7436	920449.7641
PRM27	759044.2960	920463.7709
PRM28	759052.6552	920471.3473
PRM29	759059.2076	920485.3541
PRM30	759061.4541	920540.6085
PRM31	759064.8176	920638.1170
PRM32	759057.6232	920658.4721
PRM33	759050.4176	920678.2043
PRM34	758897.1084	920679.3631
PRM35	758898.6654	920885.3618



DETAIL "A"
NOT TO SCALE



FOUND PALM BEACH COUNTY
 HORIZONTAL CONTROL POINT, BRASS
 DISK IN CONCRETE "NORTHWAY" (PBF 87)
 N 760589.1240
 E 927721.4940

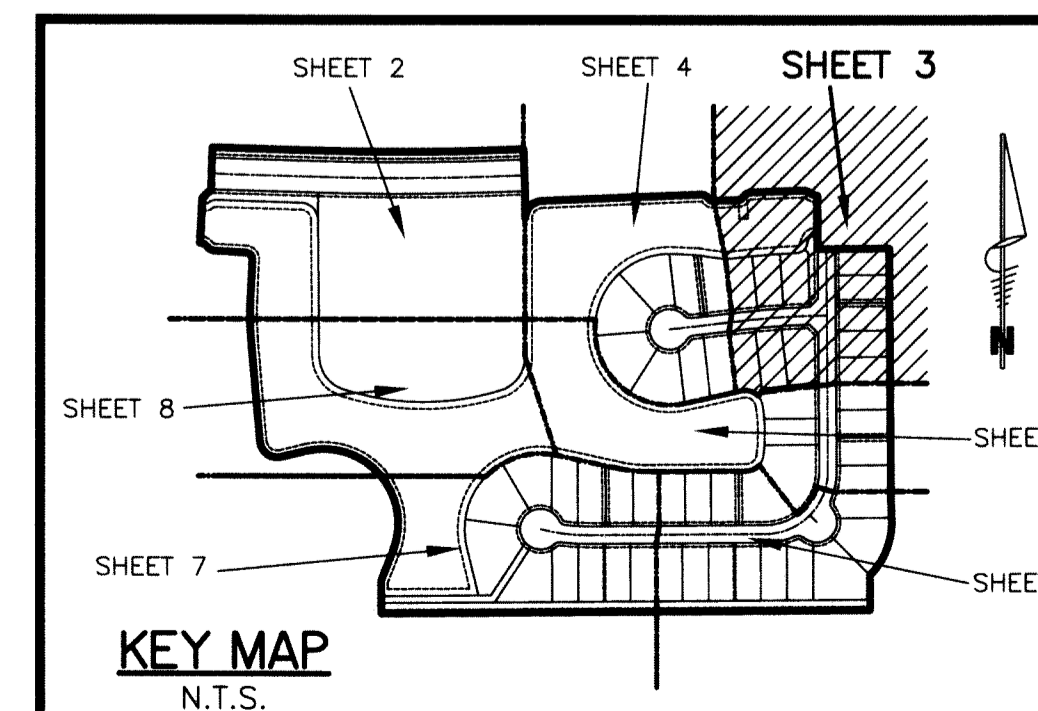
BEARING BASIS
 S88°53'05"W
 3002.20' (GRID)
 3002.13' (GROUND)

FOUND PALM BEACH COUNTY
 HORIZONTAL CONTROL POINT, BRASS
 DISK IN CONCRETE "PBF 88"
 N 760647.5620
 E 930723.1270

LEGEND:

- - FOUND PERMANENT REFERENCE MONUMENT
- - SET PERMANENT REFERENCE MONUMENT
- - SET PERMANENT CONTROL POINT
- - FOUND PERMANENT CONTROL POINT
- AGR - AGRICULTURAL
- Δ - DELTA ANGLE
- B.E. - BUFFER EASEMENT
- BLK - BLOCK
- CB - CHORD BEARING
- CH - CHORD DISTANCE
- C.L. - CENTERLINE
- D.B. - DEED BOOK
- D.E. - PRIVATE DRAINAGE EASEMENT
- F.P.L. - FLORIDA POWER & LIGHT
- L - ARC LENGTH
- L.A.E. - LIMITED ACCESS EASEMENT
- L.M.A.E. - LAKE MAINTENANCE ACCESS EASEMENT
- L.M.E. - LAKE MAINTENANCE EASEMENT
- L.W.D.D. - LAKE WORTH DRAINAGE DISTRICT
- N.R. - NOT RADIAL
- N.T.S. - NOT TO SCALE
- O.R.B. - OFFICIAL RECORD BOOK
- O.E. - MAINTENANCE & ROOF OVERHANG EASEMENT
- P.B.C.U.E. - PALM BEACH COUNTY UTILITY EASEMENT
- P.B. - PLAT BOOK
- P.C. - POINT OF CURVATURE
- P.C.C. - POINT OF COMPOUND CURVATURE
- P.C.P. - PERMANENT CONTROL POINT
- P.D.E. - PUBLIC DRAINAGE EASEMENT
- PG. - PAGE
- PGS. - PAGES
- P.O.B. - POINT OF BEGINNING
- P.O.C. - POINT OF COMMENCEMENT
- P.O.I. - POINT OF INTERSECTION
- P.R.C. - POINT OF REVERSE CURVATURE
- PRM - PERMANENT REFERENCE MONUMENT
- P.S.M. - PROFESSIONAL SURVEYOR AND MAPPER
- P.T. - POINT OF TANGENCY
- PUD - PLANNED UNIT DEVELOPMENT
- R - RADIUS
- RAD - RADIAL
- R/W - RIGHT-OF-WAY
- R.D.D. - ROAD, DYKE AND DITCH RESERVATION
- S.T. - SURVEY TIE
- U.E. - UTILITY EASEMENT
- SECTION 31-46-42
- TYP - TYPICAL

THIS INSTRUMENT WAS PREPARED BY
 PERRY C. WHITE, P.S.M. 4213, STATE OF FLORIDA
 SAND & HILLS SURVEYING, INC.
 8461 LAKE WORTH ROAD, SUITE 410
 LAKE WORTH, FLORIDA 33467
 LB-7741



KEY MAP
N.T.S.