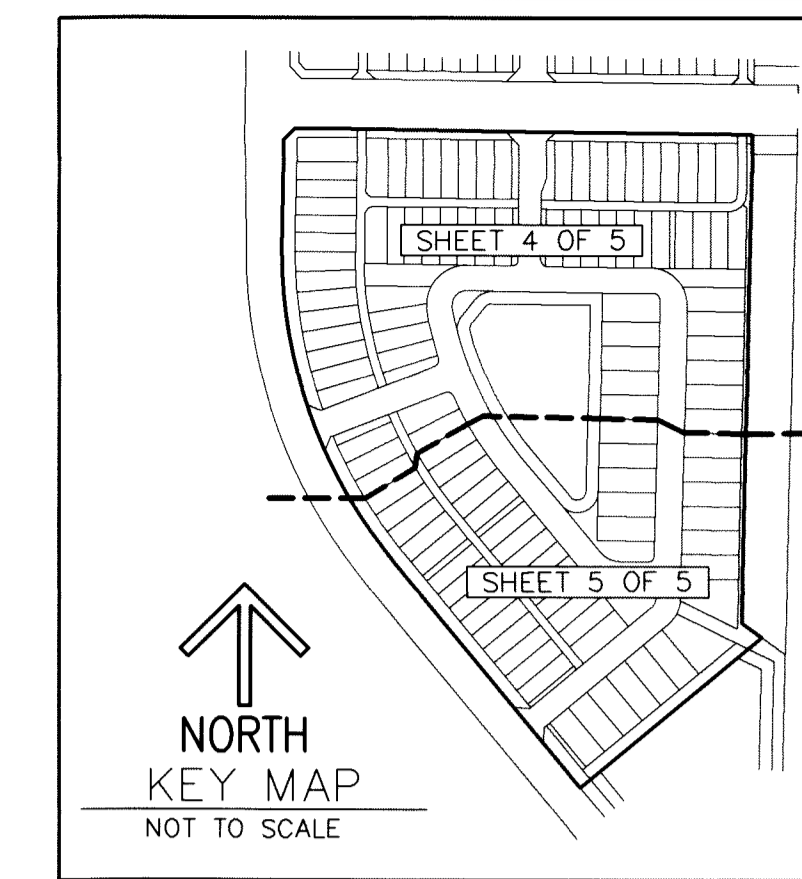


THIS INSTRUMENT PREPARED BY
 DAVID P. LINDLEY
 OF
CAULFIELD and WHEELER, INC.
 SURVEYORS — ENGINEERS — PLANNERS
 7900 GLADES ROAD, SUITE 100
 BOCA RATON, FLORIDA 33434 — (561)392-1991
 CERTIFICATE OF AUTHORIZATION NO. LB3591
 MARCH — 2018

ALTON NEIGHBORHOOD 2

BEING A REPLAT OF TRACT "D", ALTON PCD — TRACTS DEF,
 AS RECORDED IN PLAT BOOK 124, PAGES 156 THROUGH 159 OF THE PUBLIC RECORDS OF PALM BEACH COUNTY, FLORIDA,
 LYING IN SECTION 26, TOWNSHIP 41 SOUTH, RANGE 42 EAST, CITY OF PALM BEACH GARDENS, PALM BEACH COUNTY, FLORIDA



107

SHEET 3 OF 5

NORTHERN PALM BEACH COUNTY IMPROVEMENT DISTRICT
 UNIT OF DEVELOPMENT NO. 2C
 LAND USE CLASSIFICATIONS
 SINGLE FAMILY RESIDENTIAL — SFZ

TOTAL ACREAGE OF THIS PLAT — 1,209,001 SQUARE FEET/27.755 ACRES
 ALL PARCELS SHOWN HEREON ARE DESIGNATED RESIDENTIAL PARCEL CODE: PC

AREA TABLE				AREA TABLE			
LOT	SQUARE FEET	ACRES	CLASSIFICATION	LOT	SQUARE FEET	ACRES	CLASSIFICATION
1	6,573	0.151	SFZ	99	5,680	0.130	SFZ
2	5,320	0.122	SFZ	100	5,680	0.130	SFZ
3	5,320	0.122	SFZ	101	5,529	0.127	SFZ
4	5,320	0.122	SFZ	102	7,090	0.163	SFZ
5	5,320	0.122	SFZ	103	5,666	0.130	SFZ
6	5,320	0.122	SFZ	104	5,666	0.130	SFZ
7	5,320	0.122	SFZ	105	5,666	0.130	SFZ
8	5,320	0.122	SFZ	106	5,666	0.130	SFZ
9	5,320	0.122	SFZ	107	5,448	0.125	SFZ
10	5,320	0.122	SFZ	108	5,280	0.121	SFZ
11	5,320	0.122	SFZ	109	5,280	0.121	SFZ
12	5,320	0.122	SFZ	110	5,280	0.121	SFZ
13	5,320	0.122	SFZ	111	5,280	0.121	SFZ
14	5,320	0.122	SFZ	112	5,280	0.121	SFZ
15	5,320	0.122	SFZ	113	5,280	0.121	SFZ
16	5,781	0.133	SFZ	114	5,280	0.121	SFZ
17	5,320	0.122	SFZ	115	5,280	0.121	SFZ
18	6,664	0.153	SFZ	116	5,280	0.121	SFZ
19	5,528	0.127	SFZ	117	6,600	0.152	SFZ
20	5,200	0.119	SFZ	TOTAL	703,451	16.149	
21	5,200	0.119	SFZ				
22	5,200	0.119	SFZ				
23	5,200	0.119	SFZ				
24	5,200	0.119	SFZ				
25	5,200	0.119	SFZ				
26	5,200	0.119	SFZ				
27	5,200	0.119	SFZ				
28	5,200	0.119	SFZ				
29	5,199	0.116	SFZ				
30	5,200	0.119	SFZ				
31	5,659	0.130	SFZ				
32	5,200	0.119	SFZ				
33	5,200	0.119	SFZ				
34	5,200	0.119	SFZ				
35	5,200	0.119	SFZ				
36	5,200	0.119	SFZ				
37	6,423	0.147	SFZ				
38	7,542	0.173	SFZ				
39	5,466	0.125	SFZ				
40	5,480	0.126	SFZ				
41	5,494	0.126	SFZ				
42	5,507	0.126	SFZ				
43	5,863	0.135	SFZ				
44	5,881	0.135	SFZ				
45	5,809	0.133	SFZ				
46	5,787	0.133	SFZ				
47	5,786	0.133	SFZ				
48	5,786	0.133	SFZ				
49	5,786	0.133	SFZ				
50	5,786	0.133	SFZ				
51	5,666	0.130	SFZ				
52	5,666	0.130	SFZ				
53	5,678	0.130	SFZ				
54	6,988	0.160	SFZ				
55	8,366	0.192	SFZ				
56	7,150	0.164	SFZ				
57	7,150	0.164	SFZ				
58	7,150	0.164	SFZ				
59	7,150	0.164	SFZ				
60	7,150	0.164	SFZ				
61	7,150	0.164	SFZ				
62	7,150	0.164	SFZ				
63	7,150	0.164	SFZ				
64	7,150	0.164	SFZ				
65	7,306	0.168	SFZ				
66	7,150	0.164	SFZ				
67	7,150	0.164	SFZ				
68	7,150	0.164	SFZ				
69	7,150	0.164	SFZ				
70	7,150	0.164	SFZ				
71	7,150	0.164	SFZ				
72	7,150	0.164	SFZ				
73	7,150	0.164	SFZ				
74	7,150	0.164	SFZ				
75	7,150	0.164	SFZ				
76	7,150	0.164	SFZ				
77	10,533	0.242	SFZ				
78	9,398	0.216	SFZ				
79	7,150	0.164	SFZ				
80	7,150	0.164	SFZ				
81	7,150	0.164	SFZ				
82	7,150	0.164	SFZ				
83	7,150	0.164	SFZ				
84	7,150	0.164	SFZ				
85	5,360	0.123	SFZ				
86	5,360	0.123	SFZ				
87	5,360	0.123	SFZ				
88	5,360	0.123	SFZ				
89	5,360	0.123	SFZ				
90	5,360	0.123	SFZ				
91	5,360	0.123	SFZ				
92	5,360	0.123	SFZ				
93	5,360	0.123	SFZ				
94	5,360	0.123	SFZ				
95	5,498	0.126	SFZ				
96	5,671	0.130	SFZ				
97	5,689	0.131	SFZ				
98	5,671	0.130	SFZ				

AREAS OF ROAD TRACTS

TRACT	SQUARE FEET	ACRES
R	185,583	4.260
A-1	12,312	0.283
A-2	18,828	0.432
A-3	14,299	0.328
TOTAL	231,022	5.303

AREAS OF ROADWAY BUFFER TRACTS

TRACT	SQUARE FEET	ACRES
B1	281	0.006
B2	8,463	0.194
B3	6,502	0.149
B4	21,580	0.495
B5	22,362	0.513
B6	4,427	0.102
TOTAL	63,615	1.459

AREAS OF WATER MANAGEMENT TRACTS

TRACT	SQUARE FEET	ACRES
LM-1	36,783	0.844
LM-2	12,767	0.293
W	80,673	1.853
TOTAL	130,223	2.990

AREAS OF OPEN SPACE TRACTS

TRACT	SQUARE FEET	ACRES
L1	1,625	0.037
L2	1,385	0.032
L3	1,727	0.040
L4	2,054	0.047
L5	2,908	0.067
L6	5,282	0.121
L7	3,129	0.072
L8	2,738	0.063
L9	2,010	0.046
L10	1,980	0.045
L11	1,340	0.031
L12	1,300	0.030
L13	9,976	0.229
L14	1,890	0.043
L15	6,924	0.159
CU1	8,686	0.199
CU2	2,590	0.059
CU3	7,440	0.171
CU4	9,021	0.207
CU5	6,695	0.154
TOTAL	80,700	1.853