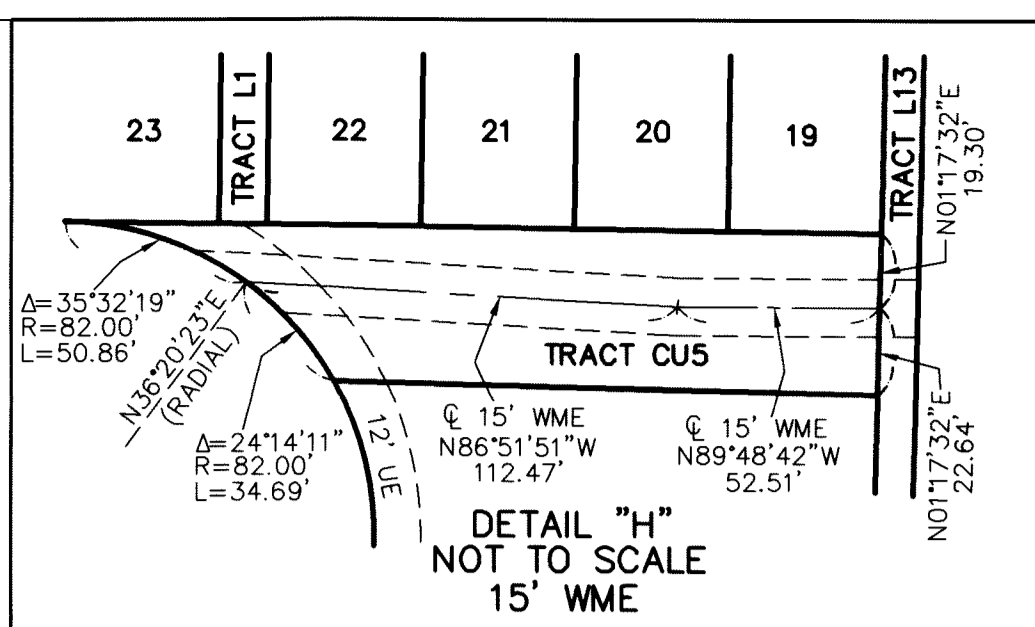


THIS INSTRUMENT PREPARED BY  
 DAVID P. LINDLEY  
 OF  
**CAULFIELD and WHEELER, INC.**  
 SURVEYORS - ENGINEERS - PLANNERS  
 7900 GLADES ROAD, SUITE 100  
 BOCA RATON, FLORIDA 33434 - (561)392-1991  
 CERTIFICATE OF AUTHORIZATION NO. LB3591  
 MARCH - 2018

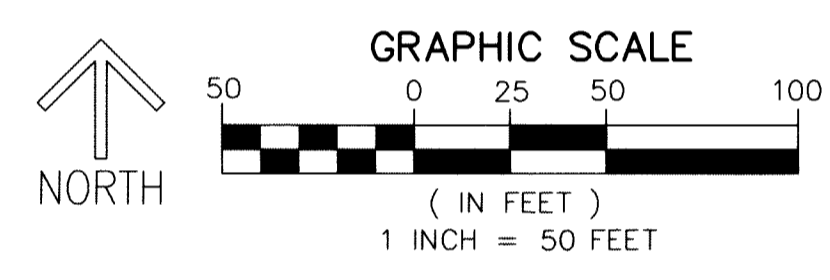
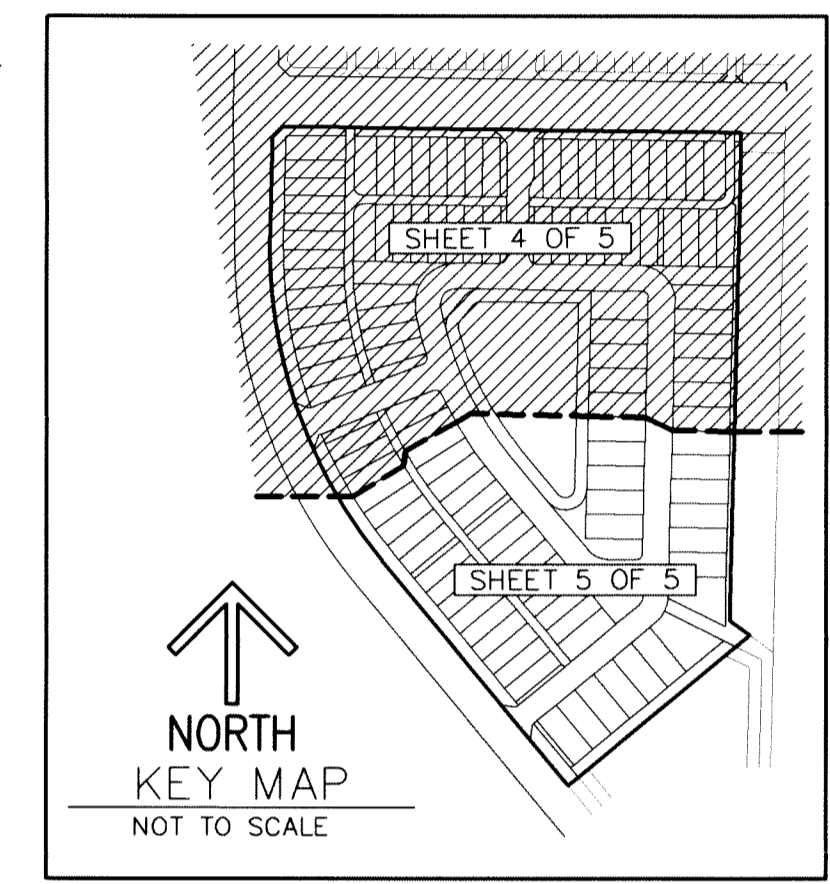
# ALTON NEIGHBORHOOD 2

BEING A REPLAT OF TRACT "D", ALTON PCD - TRACTS DEF,  
 AS RECORDED IN PLAT BOOK 124, PAGES 156 THROUGH 159 OF THE PUBLIC RECORDS OF PALM BEACH COUNTY, FLORIDA,  
 LYING IN SECTION 26, TOWNSHIP 41 SOUTH, RANGE 42 EAST, CITY OF PALM BEACH GARDENS, PALM BEACH COUNTY, FLORIDA

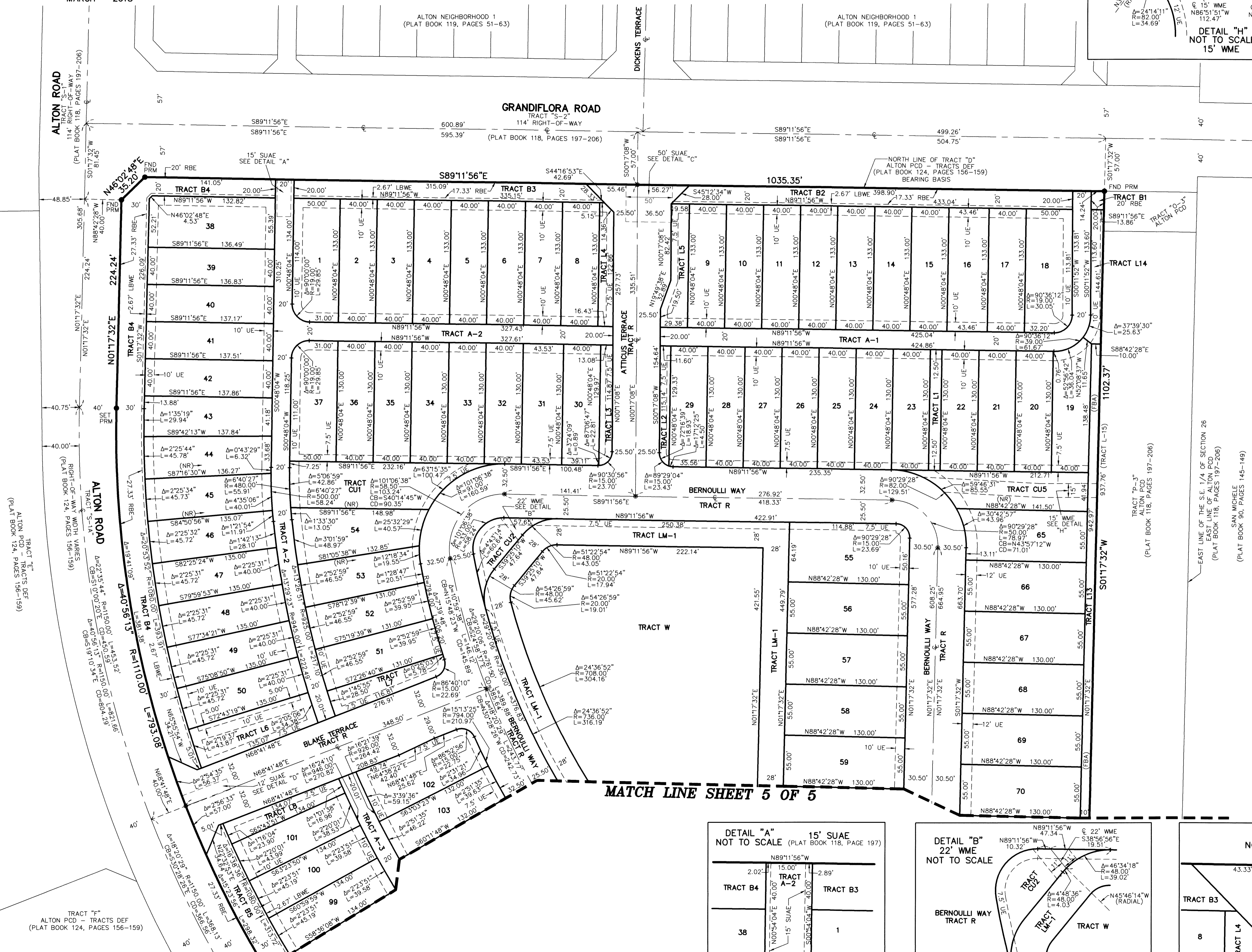
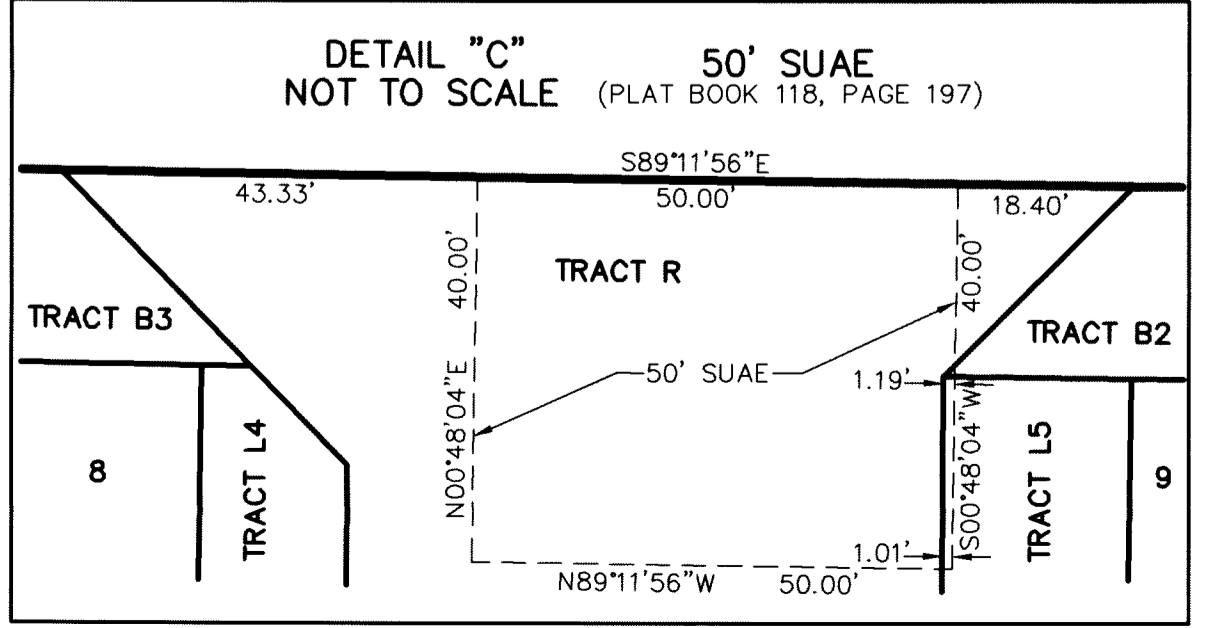
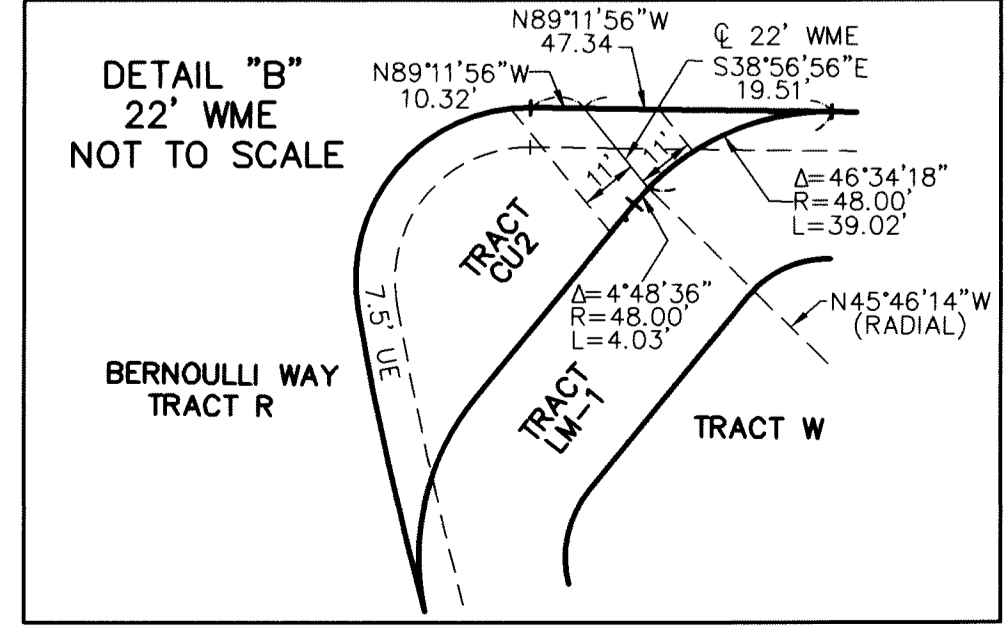
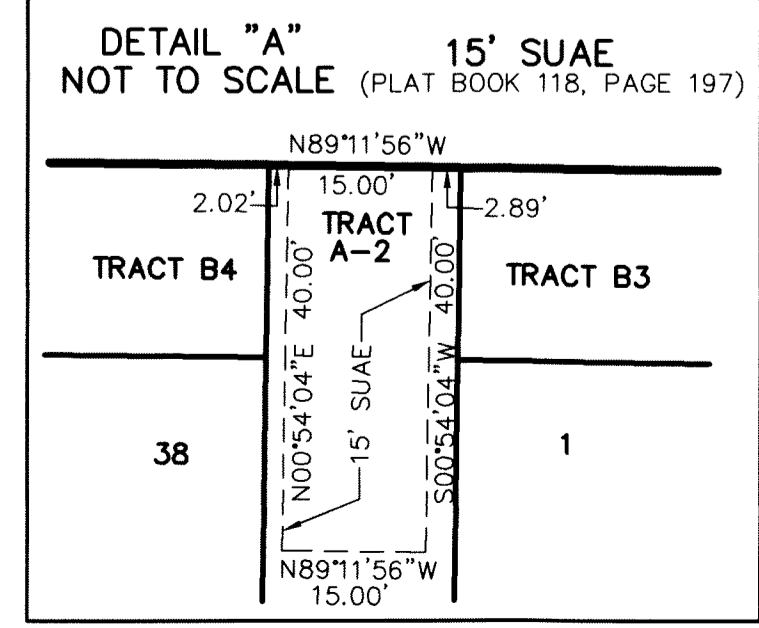
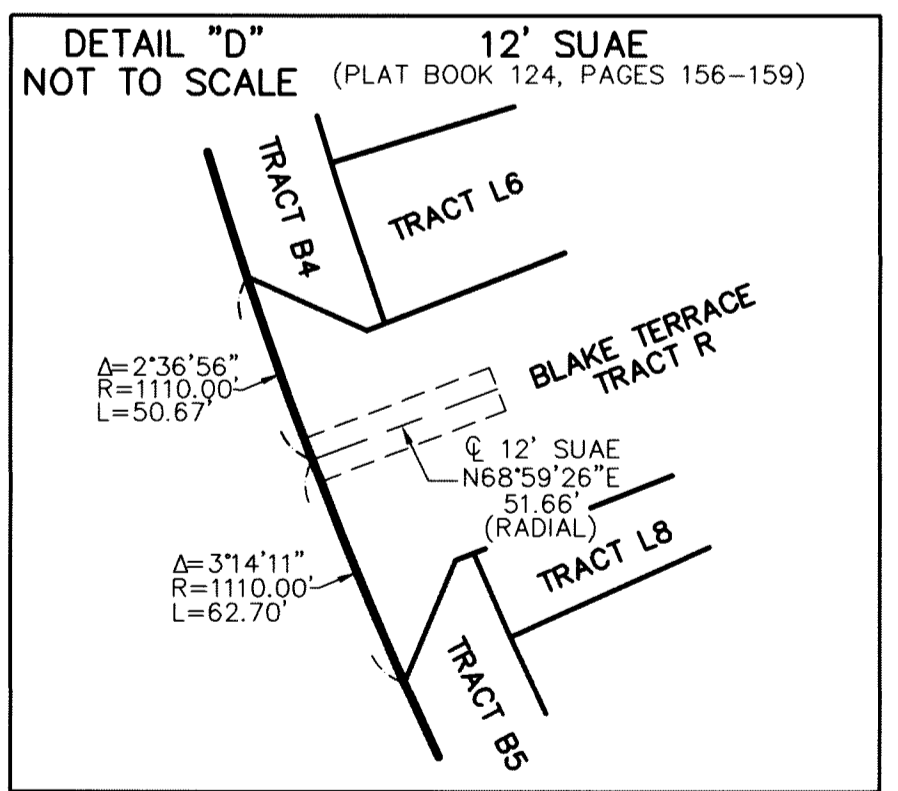


108

SHEET 4 OF 5



- LEGEND/ABBREVIATIONS**
- ⊙ - CENTERLINE
  - ∠ - DELTA (CENTRAL ANGLE)
  - CB - CHORD BEARING
  - CD - CHORD DISTANCE
  - FBA - FIRE BREAK AREA
  - LB - LICENSED BUSINESS
  - LBWE - LANDSCAPE BUFFER WALL EASEMENT
  - O.R.B. - OFFICIAL RECORD BOOK
  - NR - NOTED
  - NRB - ROADWAY BUFFER EASEMENT
  - IND - INDICATES NON-RADIAL LINE
  - SUAE - SEACOAST UTILITY AUTHORITY EASEMENT
  - UE - UTILITY EASEMENT
  - WME - WATER MANAGEMENT EASEMENT
  - ⊙ - DENOTES PERMANENT CONTROL POINT
  - - DENOTES PERMANENT REFERENCE MONUMENT FOUND 4"x4" CONCRETE MONUMENT WITH DISK
  - - FND PRM - DENOTES PERMANENT REFERENCE MONUMENT STAMPED 1/2" IRON ROD WITH ALUMINUM DISK STAMPED "SCHORAH AND ASSOCIATES PRM LB#2438"
  - - SET PRM - DENOTES PERMANENT REFERENCE MONUMENT SET 5/8" IRON ROD WITH PLASTIC CAP STAMPED "C&W PRM LB#3591"



MATCH LINE SHEET 5 OF 5

TRACT "F"  
 ALTON PCD - TRACTS DEF  
 (PLAT BOOK 124, PAGES 156-159)

SAN MICHELE  
 (PLAT BOOK 90, PAGES 145-149)

EAST LINE OF THE S.E. 1/4 OF SECTION 26  
 (PLAT BOOK 118, PAGES 197-206)

TRACT "G"  
 ALTON PCD - TRACTS DEF  
 (PLAT BOOK 118, PAGES 197-206)

TRACT "E"  
 ALTON PCD - TRACTS DEF  
 (PLAT BOOK 124, PAGES 158-159)

RIGHT-OF-WAY WIDTH VARIES  
 (PLAT BOOK 124, PAGES 156-159)

ALTON ROAD  
 TRACT "D"  
 (PLAT BOOK 118, PAGES 197-206)

TRACT "C"  
 ALTON PCD - TRACTS DEF  
 (PLAT BOOK 118, PAGES 197-206)