

BLOCK 12, DEL PARK (PLAT BOOK 8, PAGE 56)

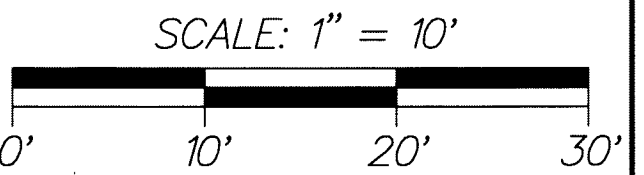
# HACKER OFFICE BUILDING

139

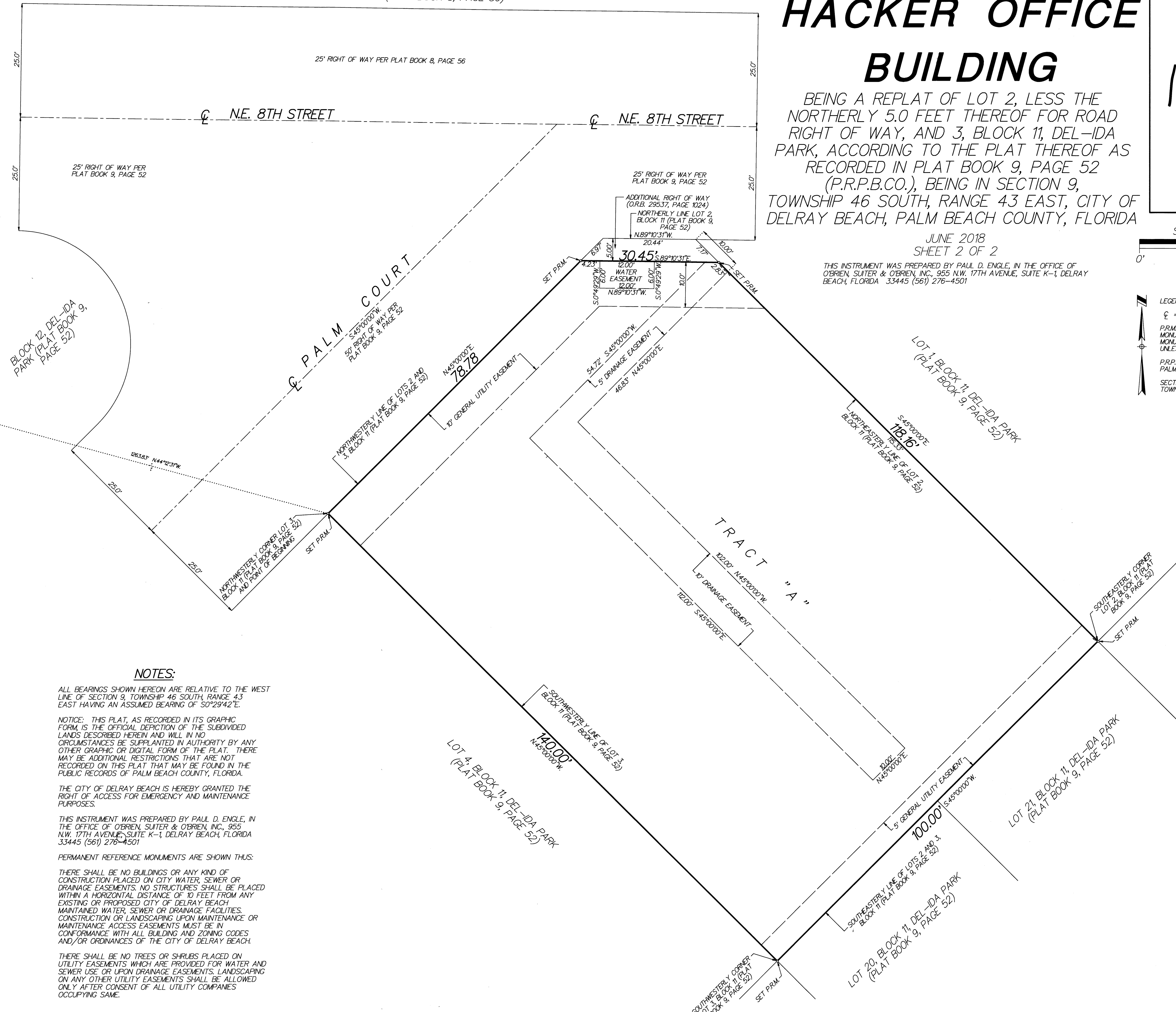
BEING A REPLAT OF LOT 2, LESS THE NORTHERLY 5.0 FEET THEREOF FOR ROAD RIGHT OF WAY, AND 3, BLOCK 11, DEL-IDA PARK, ACCORDING TO THE PLAT THEREOF AS RECORDED IN PLAT BOOK 9, PAGE 52 (P.R.P.B.CO.), BEING IN SECTION 9, TOWNSHIP 46 SOUTH, RANGE 43 EAST, CITY OF DELRAY BEACH, PALM BEACH COUNTY, FLORIDA

JUNE 2018  
SHEET 2 OF 2

THIS INSTRUMENT WAS PREPARED BY PAUL D. ENGLE, IN THE OFFICE OF O'BRIEN, SUTER & O'BRIEN, INC., 955 N.W. 17TH AVENUE, SUITE K-1, DELRAY BEACH, FLORIDA 33445 (561) 276-4501



- LEGEND:
- ☉ = CENTERLINE
  - P.R.M. = PERMANENT REFERENCE MONUMENT (4"x4" CONCRETE MONUMENT STAMPED "PRM (B353) UNLESS STATED OTHERWISE)
  - P.R.P.B.CO. = PUBLIC RECORDS OF PALM BEACH COUNTY
  - SECTION 9/46/43 = SECTION 9, TOWNSHIP 46 SOUTH, RANGE 43 EAST



WEST QUARTER (1/4) CORNER SECTION 9/46/43 FOUND PALM BEACH COUNTY BRASS DISK

SOUTHWEST CORNER SECTION 9/46/43 FOUND PALM BEACH COUNTY BRASS DISK

**NOTES:**

ALL BEARINGS SHOWN HEREON ARE RELATIVE TO THE WEST LINE OF SECTION 9, TOWNSHIP 46 SOUTH, RANGE 43 EAST HAVING AN ASSUMED BEARING OF S0°29'42"E.

NOTICE: THIS PLAT, AS RECORDED IN ITS GRAPHIC FORM IS THE OFFICIAL DEPICTION OF THE SUBDIVIDED LANDS DESCRIBED HEREIN AND WILL IN NO CIRCUMSTANCES BE SUPPLANTED IN AUTHORITY BY ANY OTHER GRAPHIC OR DIGITAL FORM OF THE PLAT. THERE MAY BE ADDITIONAL RESTRICTIONS THAT ARE NOT RECORDED ON THIS PLAT THAT MAY BE FOUND IN THE PUBLIC RECORDS OF PALM BEACH COUNTY, FLORIDA.

THE CITY OF DELRAY BEACH IS HEREBY GRANTED THE RIGHT OF ACCESS FOR EMERGENCY AND MAINTENANCE PURPOSES.

THIS INSTRUMENT WAS PREPARED BY PAUL D. ENGLE, IN THE OFFICE OF O'BRIEN, SUTER & O'BRIEN, INC., 955 N.W. 17TH AVENUE, SUITE K-1, DELRAY BEACH, FLORIDA 33445 (561) 276-4501

PERMANENT REFERENCE MONUMENTS ARE SHOWN THUS:

THERE SHALL BE NO BUILDINGS OR ANY KIND OF CONSTRUCTION PLACED ON CITY WATER, SEWER OR DRAINAGE EASEMENTS. NO STRUCTURES SHALL BE PLACED WITHIN A HORIZONTAL DISTANCE OF 10 FEET FROM ANY EXISTING OR PROPOSED CITY OF DELRAY BEACH MAINTAINED WATER, SEWER OR DRAINAGE FACILITIES. CONSTRUCTION OR LANDSCAPING UPON MAINTENANCE OR MAINTENANCE ACCESS EASEMENTS MUST BE IN CONFORMANCE WITH ALL BUILDING AND ZONING CODES AND/OR ORDINANCES OF THE CITY OF DELRAY BEACH.

THERE SHALL BE NO TREES OR SHRUBS PLACED ON UTILITY EASEMENTS WHICH ARE PROVIDED FOR WATER AND SEWER USE OR UPON DRAINAGE EASEMENTS. LANDSCAPING ON ANY OTHER UTILITY EASEMENTS SHALL BE ALLOWED ONLY AFTER CONSENT OF ALL UTILITY COMPANIES OCCUPYING SAME.

I:\Drawings\2018\180618\180618.dwg - 11:59 AM - Scale: 1" = 10' 0.0000