

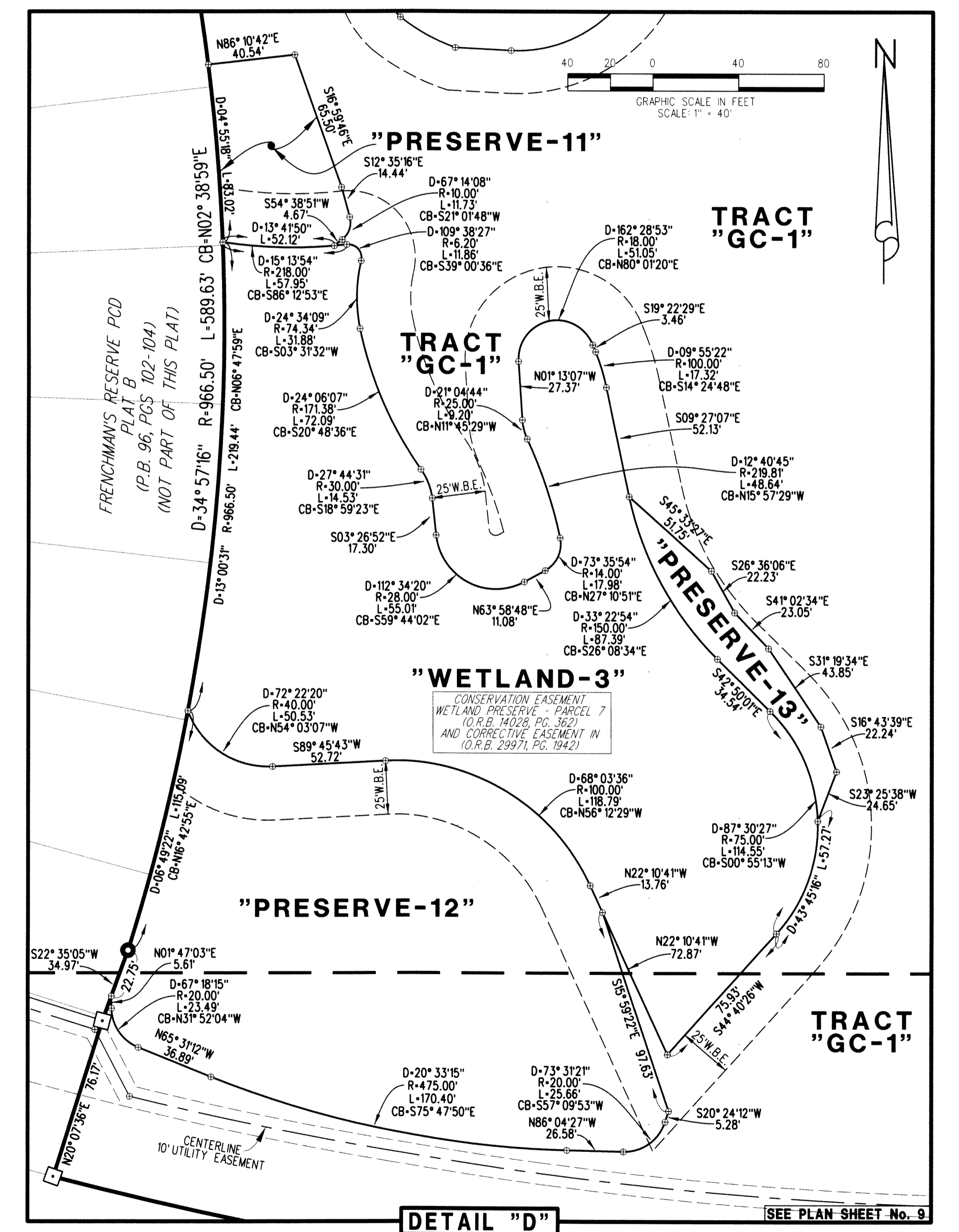
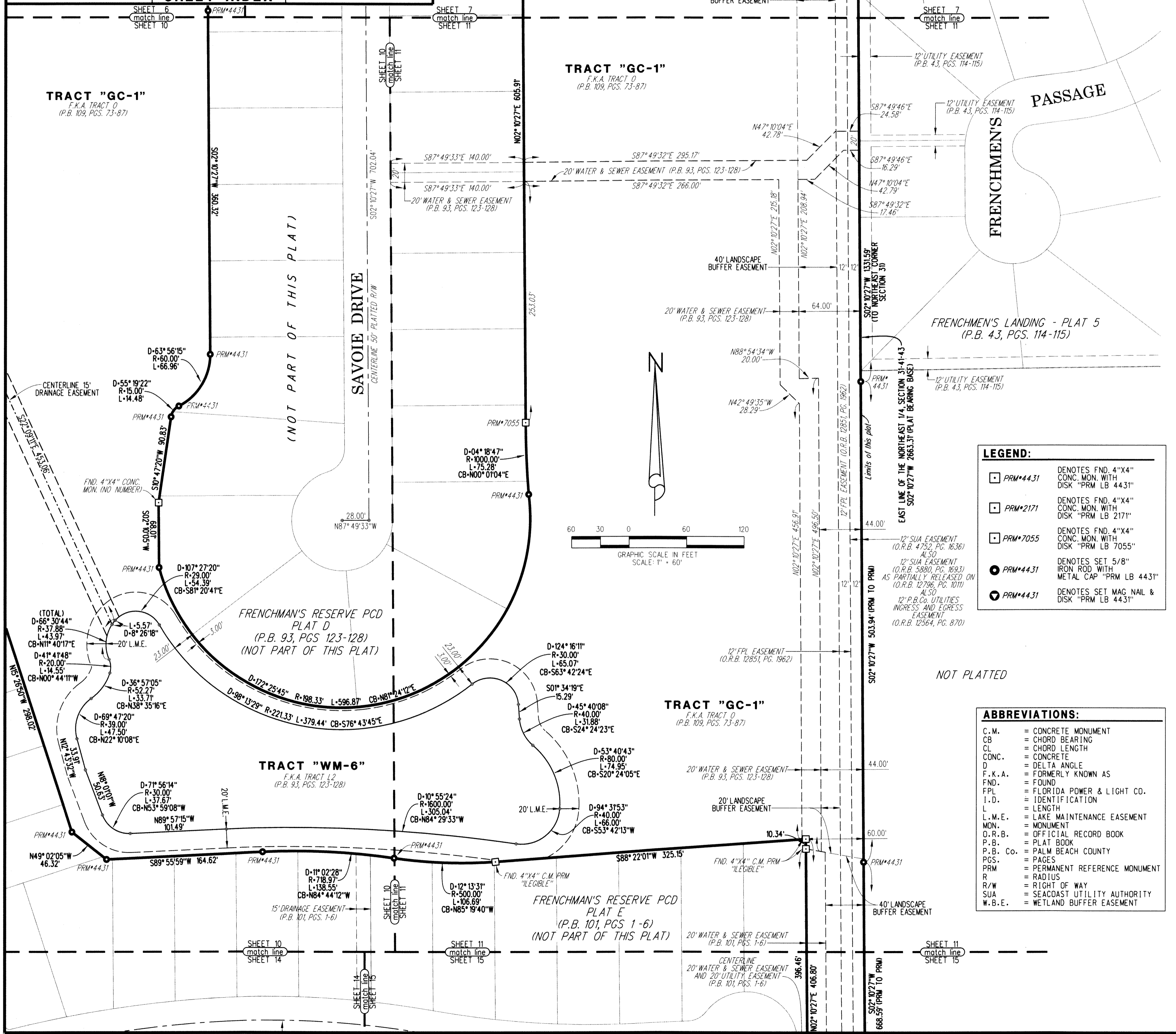
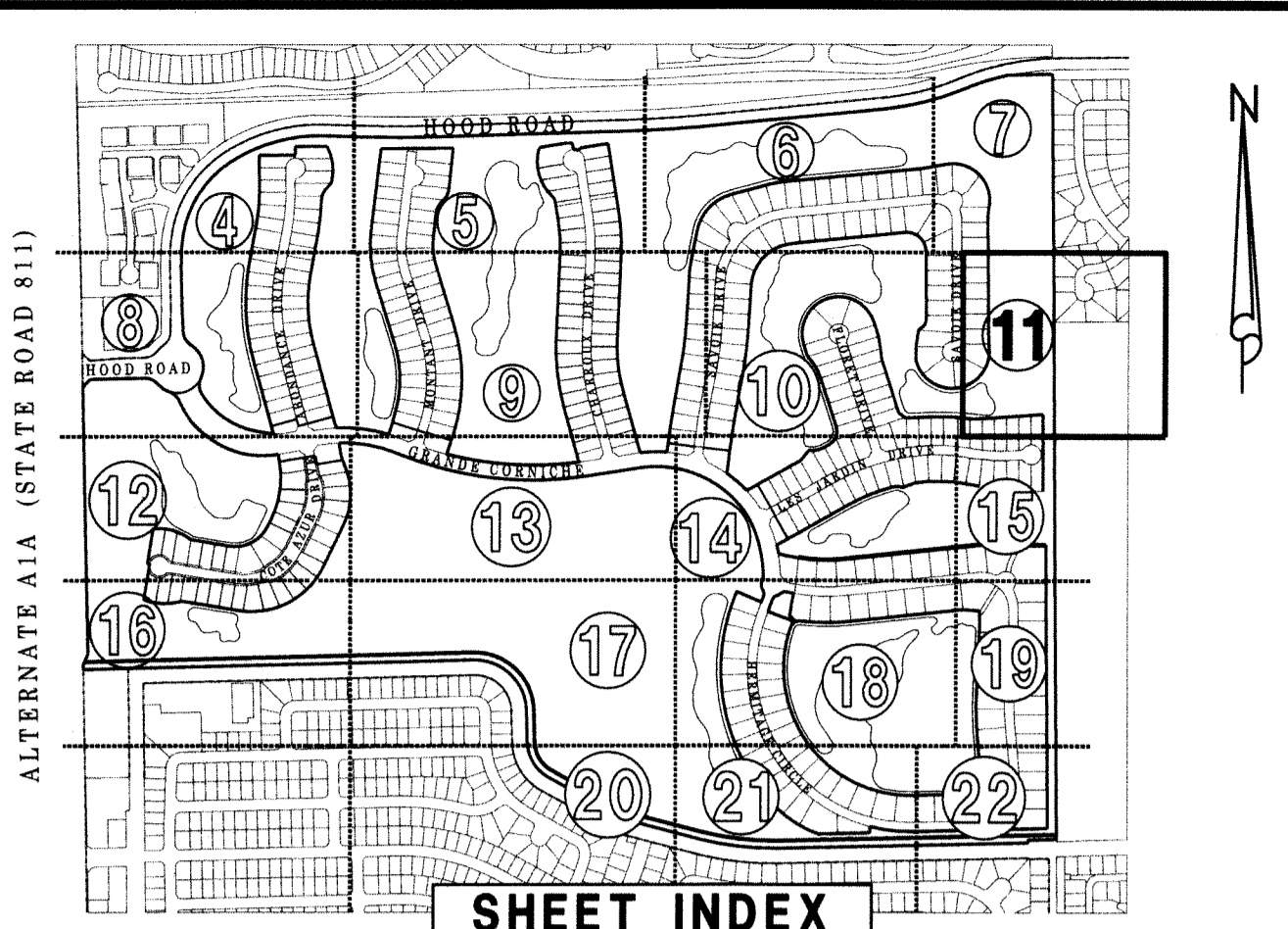
150

# FRENCHMAN'S RESERVE PCD - GOLF COURSE REPLAT

BEING A REPLAT OF TRACTS L1, L2, W1, W2, W3 AND UP1, AS SHOWN ON FRENCHMAN'S RESERVE PCD - PLAT ONE, RECORDED IN PLAT BOOK 92, PAGES 11 THROUGH 20, AND A REPLAT OF TRACTS L, UP1 AND UP2, AS SHOWN ON FRENCHMAN'S RESERVE PCD - PLAT "A", RECORDED IN PLAT BOOK 92, PAGES 194 THROUGH 196, AND A REPLAT OF TRACTS G, L1, L2, UP1 AND W, AS SHOWN ON FRENCHMAN'S RESERVE PCD - PLAT F, RECORDED IN PLAT BOOK 93, PAGES 82 THROUGH 87, AND A REPLAT OF TRACTS L1, L2, W1, W2, W3 AND UP1, AS SHOWN ON FRENCHMAN'S RESERVE PCD - PLAT "D", RECORDED IN PLAT BOOK 93, PAGES 123 THROUGH 128, AND A REPLAT OF TRACTS A, B AND UP1, AS SHOWN ON FRENCHMAN'S RESERVE PCD - CLUBHOUSE, RECORDED IN PLAT BOOK 94, PAGES 138 THROUGH 139, AND A REPLAT OF TRACTS L1, UP1, UP3, AND W1, AS SHOWN ON FRENCHMAN'S RESERVE PCD - PLAT "B", RECORDED IN PLAT BOOK 96, PAGES 102 THROUGH 104, AND A REPLAT OF TRACTS L1 AND L2, AS SHOWN ON FRENCHMAN'S RESERVE PCD - PLAT E, RECORDED IN PLAT BOOK 101, PAGES 1 THROUGH 6, AND A REPLAT OF TRACTS L-A, O, WA, WB, WC, WD, UP, UPB, UPC, UPD, UPE, AS SHOWN ON FRENCHMAN'S RESERVE PCD - GOLF COURSE, RECORDED IN PLAT BOOK 109, PAGES 73 THROUGH 87 PUBLIC RECORDS OF PALM BEACH COUNTY, FLORIDA

LYING IN SECTION 31, TOWNSHIP 41 SOUTH, RANGE 43 EAST, CITY OF PALM BEACH GARDENS, PALM BEACH COUNTY, FLORIDA

JULY 2018 SHEET 11 OF 23



- LEGEND:**
- PRM#4431 DENOTES FND. 4"x4" CONC. MON. WITH DISK "PRM LB 4431"
  - PRM#2171 DENOTES FND. 4"x4" CONC. MON. WITH DISK "PRM LB 2171"
  - PRM#7055 DENOTES FND. 4"x4" CONC. MON. WITH DISK "PRM LB 7055"
  - PRM#4431 DENOTES SET 5/8" IRON ROD WITH METAL CAP "PRM LB 4431"
  - PRM#4431 DENOTES SET MAG NAIL & DISK "PRM LB 4431"

- ABBREVIATIONS:**
- C.M. = CONCRETE MONUMENT
  - CB = CHORD BEARING
  - CL = CHORD LENGTH
  - CONC. = CONCRETE
  - D = DELTA ANGLE
  - F.K.A. = FORMERLY KNOWN AS
  - FND. = FOUND
  - FPL = FLORIDA POWER & LIGHT CO.
  - I.D. = IDENTIFICATION
  - L = LENGTH
  - L.M.E. = LAKE MAINTENANCE EASEMENT
  - MON. = MONUMENT
  - D.R.B. = OFFICIAL RECORD BOOK
  - P.B. = PLAT BOOK
  - P.B. Co. = PALM BEACH COUNTY
  - PGS. = PAGES
  - PRM = PERMANENT REFERENCE MONUMENT
  - R = RADIUS
  - R/W = RIGHT OF WAY
  - SUA = SEACAST UTILITY AUTHORITY
  - W.B.E. = WETLAND BUFFER EASEMENT

**LIDBERG LAND SURVEYING, INC.**

765 West Indiantown Road, Suite 200, Jupiter, Florida 33458 TEL. 561-746-8454

CAD. K:\UST \ 314143 \ 109-73 \ 17-029-306 \ 17-029-306.DGN	REF.	FB.	PG.	JOB	17-029-306
FLD.				DATE	JULY 2018
OFF.	CASASUS			DATE	JULY 2018
CKD.	D.C.L.	SHEET	11	OF	23
		DWG.			017-029P