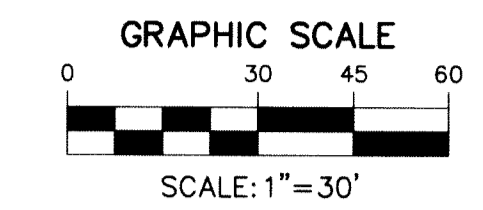
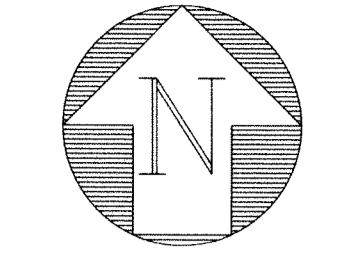


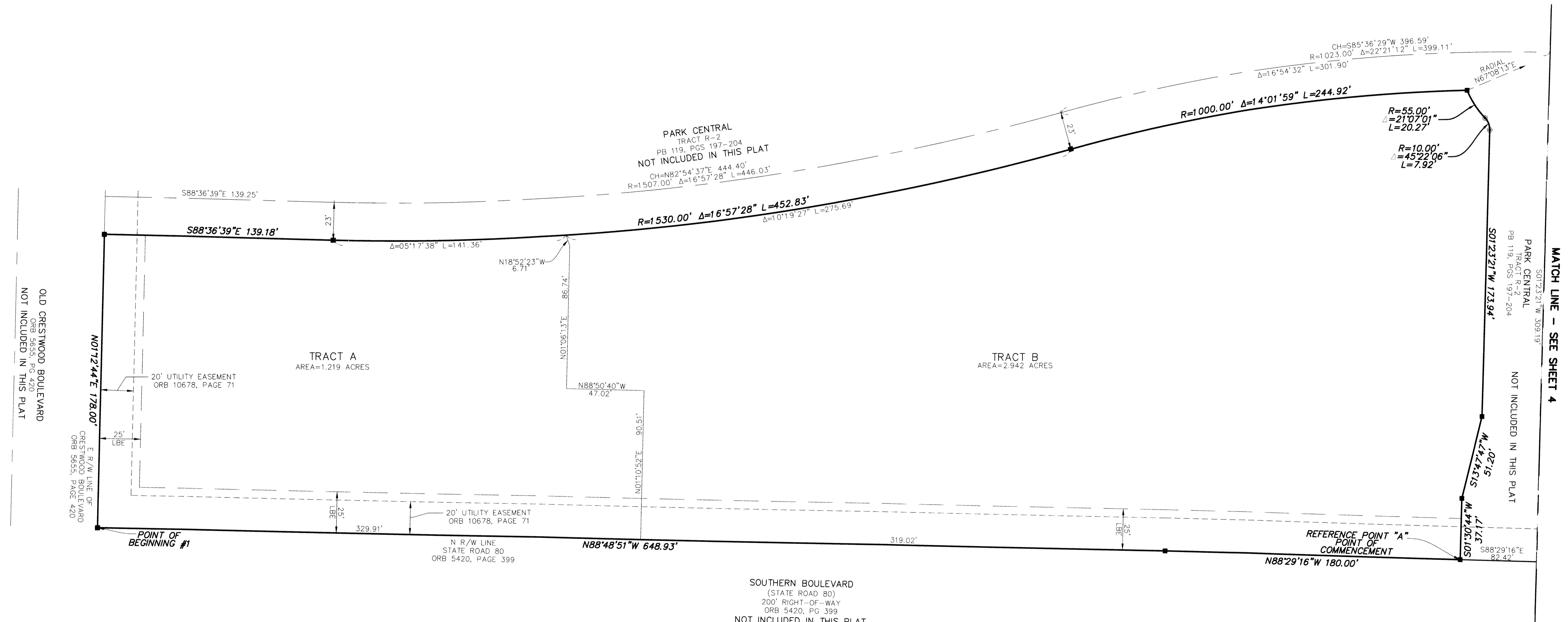
# CYPRESS KEY TOWN CENTRE

LYING IN SECTION 34, TOWNSHIP 43 SOUTH, RANGE 41 EAST,  
BEING A REPLAT OF TRACT G AND TRACT H OF PARK CENTRAL AT  
CYPRESS KEY, AS RECORDED IN PLAT BOOK 119, PAGES 197 THROUGH  
204, PUBLIC RECORDS OF PALM BEACH COUNTY, FLORIDA.  
THE VILLAGE OF ROYAL PALM BEACH, PALM BEACH COUNTY, FLORIDA.  
AUGUST 2018  
SHEET 3 OF 4

181



STATE OF FLORIDA }  
COUNTY OF PALM BEACH } S.S.  
THIS INSTRUMENT WAS FILED FOR  
RECORD AT \_\_\_\_\_  
THIS \_\_\_\_\_ DAY OF \_\_\_\_\_  
2018 \_\_\_\_\_ AND DULY RECORDED  
IN PLAT BOOK NO. \_\_\_\_\_  
ON PAGE(S) \_\_\_\_\_  
SHARON R. BOCK,  
CLERK AND COMPTROLLER  
BY: \_\_\_\_\_  
DEPUTY CLERK



OLD CRESTWOOD BOULEVARD  
NOT INCLUDED IN THIS PLAT

MATCH LINE - SEE SHEET 4  
PARK CENTRAL  
TRACT R-2  
PB 119, PGS 197-204  
NOT INCLUDED IN THIS PLAT

- LEGEND**
- Δ CENTRAL (DELTA) ANGLE
  - L ARC LENGTH
  - LBE LANDSCAPE BUFFER EASEMENT
  - ORB OFFICIAL RECORD BOOK
  - PB PLAT BOOK
  - PG(S) PAGE(S)
  - R RADIUS
  - R/W RIGHT-OF-WAY
  - CH CHORD
  - LB LICENSE BUSINESS
  - PRM PERMANENT REFERENCE MONUMENT
  - FPL FLORIDA POWER & LIGHT
  - FOUND NAIL & DISK STAMPED LB#6603
  - FOUND 4'X4' CONCRETE MONUMENT
  - DISK STAMPED PRM LB#6603

THIS INSTRUMENT PREPARED BY JENNIFER MALIN, P.S.M. PSM#6667 STATE OF FLORIDA.  
ENGENUITY GROUP, INC. ENGINEERS SURVEYORS AND GIS MAPPERS  
1280 N. CONGRESS AVE., SUITE 101, WEST PALM BEACH, FLORIDA 33409.  
CERTIFICATE OF AUTHORIZATION NO. LB0006603

**CYPRESS KEY TOWN CENTRE**

A Higher Standard of Excellence	
<b>engenuity</b> group inc.	
ENGINEERS • SURVEYORS • GIS MAPPERS	
1280 NORTH CONGRESS AVE., SUITE 101 WEST PALM BEACH, FLORIDA 33409 PH (561)855-1151 • FAX (561)832-9390 WWW.ENGUITYGROUP.COM	

DATE	8/2/2018
SCALE	1"=30'
CAD FILE	17049.01 PLAT
SDSK PROJECT	17049.01
DRAWN	JCM
CHECKED	CAR

S H E E T	3/4
	JOB NO. <b>17049.01</b>

Y:\land\_projects\82\17049.01\_Cypress\_Key\_Plat\dwg\17049.01\_Plat\_Cover\_May\_2018.dwg 8/2/2018 7:14:45 AM EDI