

THIS INSTRUMENT PREPARED BY  
 DAVID P. LINDLEY  
 OF  
**CAULFIELD and WHEELER, INC.**  
 SURVEYORS - ENGINEERS - PLANNERS  
 7900 GLADES ROAD, SUITE 100  
 BOCA RATON, FLORIDA 33434 - (561)392-1991

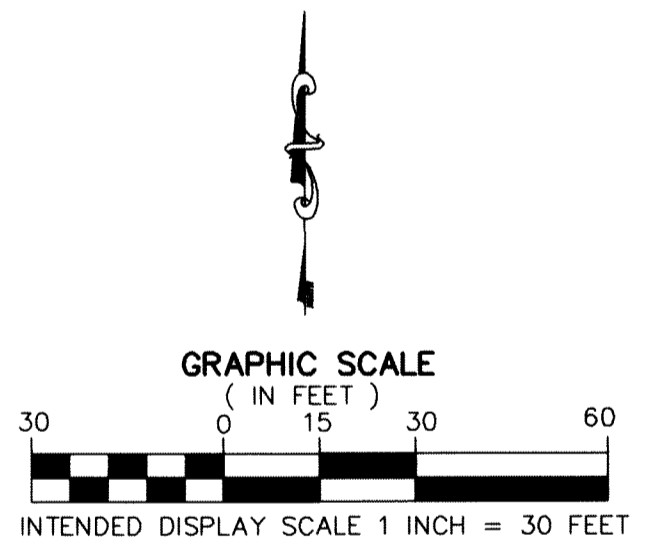
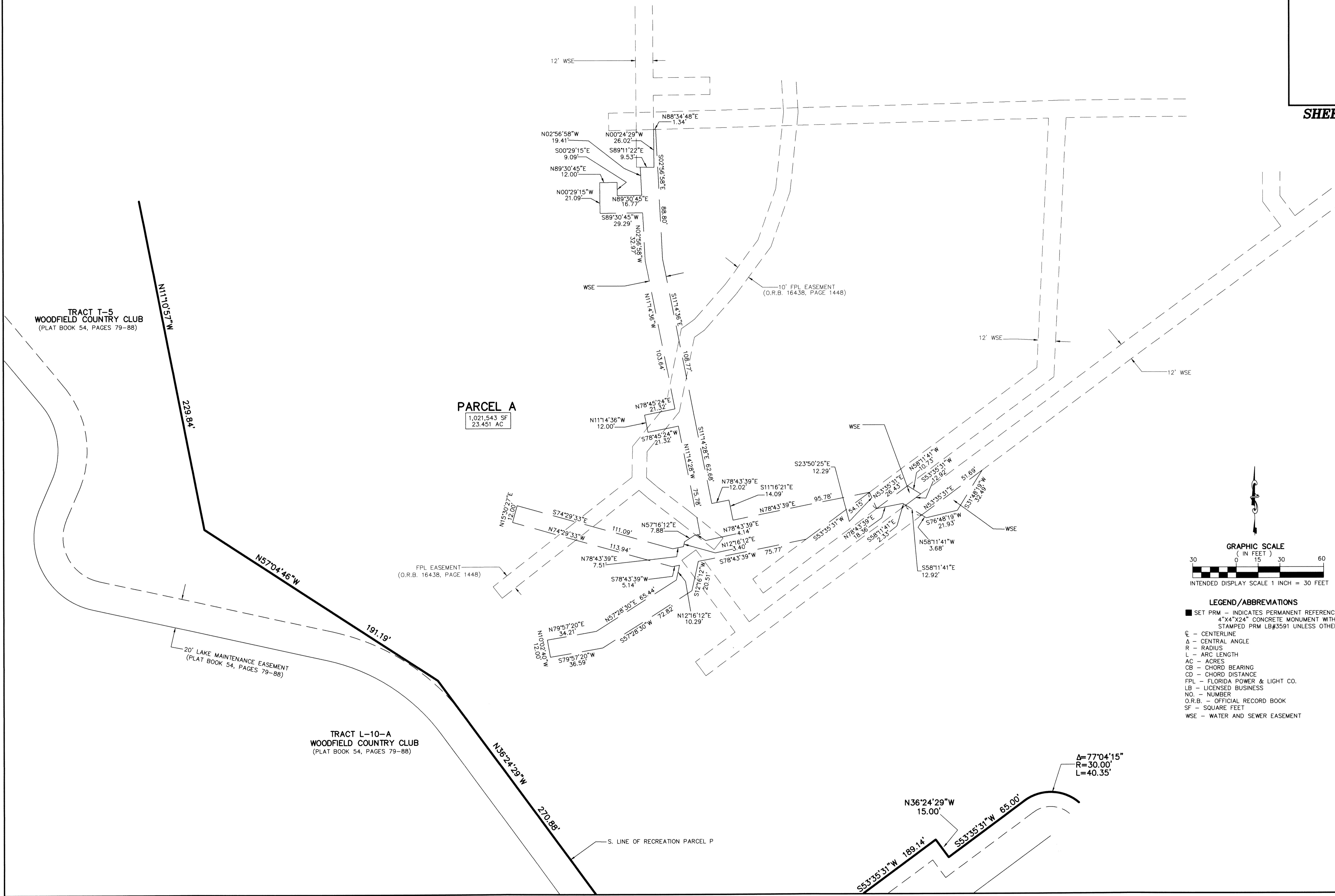
# WOODFIELD COUNTRY CLUB RECREATION PARCEL REPLAT

BEING A REPLAT OF ALL OF RECREATION PARCEL P AND A PORTION OF TRACTS L-10-A AND T-5 OF WOODFIELD COUNTRY CLUB,  
 ACCORDING TO THE PLAT THEREOF, AS RECORDED IN PLAT BOOK 54 AT PAGE 79 OF PUBLIC RECORDS OF PALM BEACH COUNTY, FLORIDA,  
 TOGETHER WITH PORTIONS OF GOLF COURSE PARCEL A AND LAKE PARCEL C OF THE ENCLAVE AT WOODFIELD COUNTRY CLUB,  
 ACCORDING TO THE PLAT THEREOF, AS RECORDED IN PLAT BOOK 76 AT PAGE 63 OF PUBLIC RECORDS OF PALM BEACH COUNTY, FLORIDA  
 LYING IN SECTION 4, TOWNSHIP 47 SOUTH, RANGE 42 EAST,  
 CITY OF BOCA RATON, PALM BEACH COUNTY, FLORIDA

**SHEET INDEX**  
 1 - COVER SHEET  
 2 - MAP SHEET  
 3 - EASEMENT GEOMETRY  
 4 - EASEMENT GEOMETRY

188

**SHEET 4 OF 4**



**LEGEND/ABBREVIATIONS**

- SET PRM - INDICATES PERMANENT REFERENCE MONUMENT
- 4"x4"x24" CONCRETE MONUMENT WITH DISK
- STAMPED PRM LB#3591 UNLESS OTHERWISE NOTED
- ⊙ - CENTERLINE
- Δ - CENTRAL ANGLE
- R - RADIUS
- L - ARC LENGTH
- AC - ACRES
- CB - CHORD BEARING
- CD - CHORD DISTANCE
- FPL - FLORIDA POWER & LIGHT CO.
- LB - LICENSED BUSINESS
- NO. - NUMBER
- O.R.B. - OFFICIAL RECORD BOOK
- SF - SQUARE FEET
- WSE - WATER AND SEWER EASEMENT