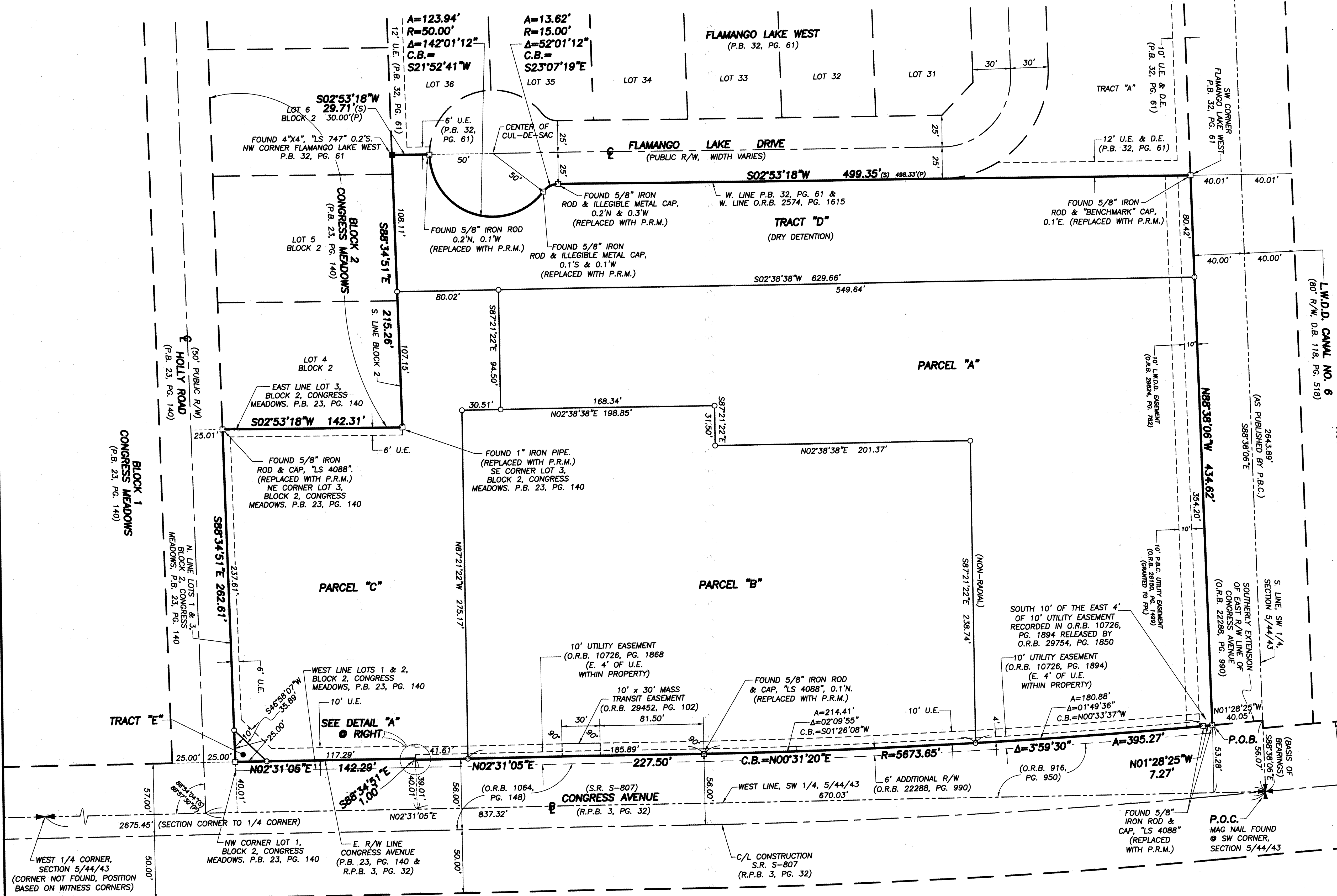
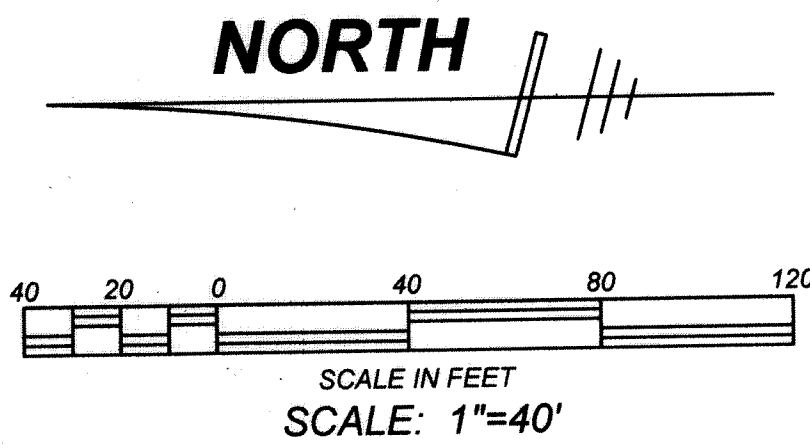


# CIRCUS TRIX CPD

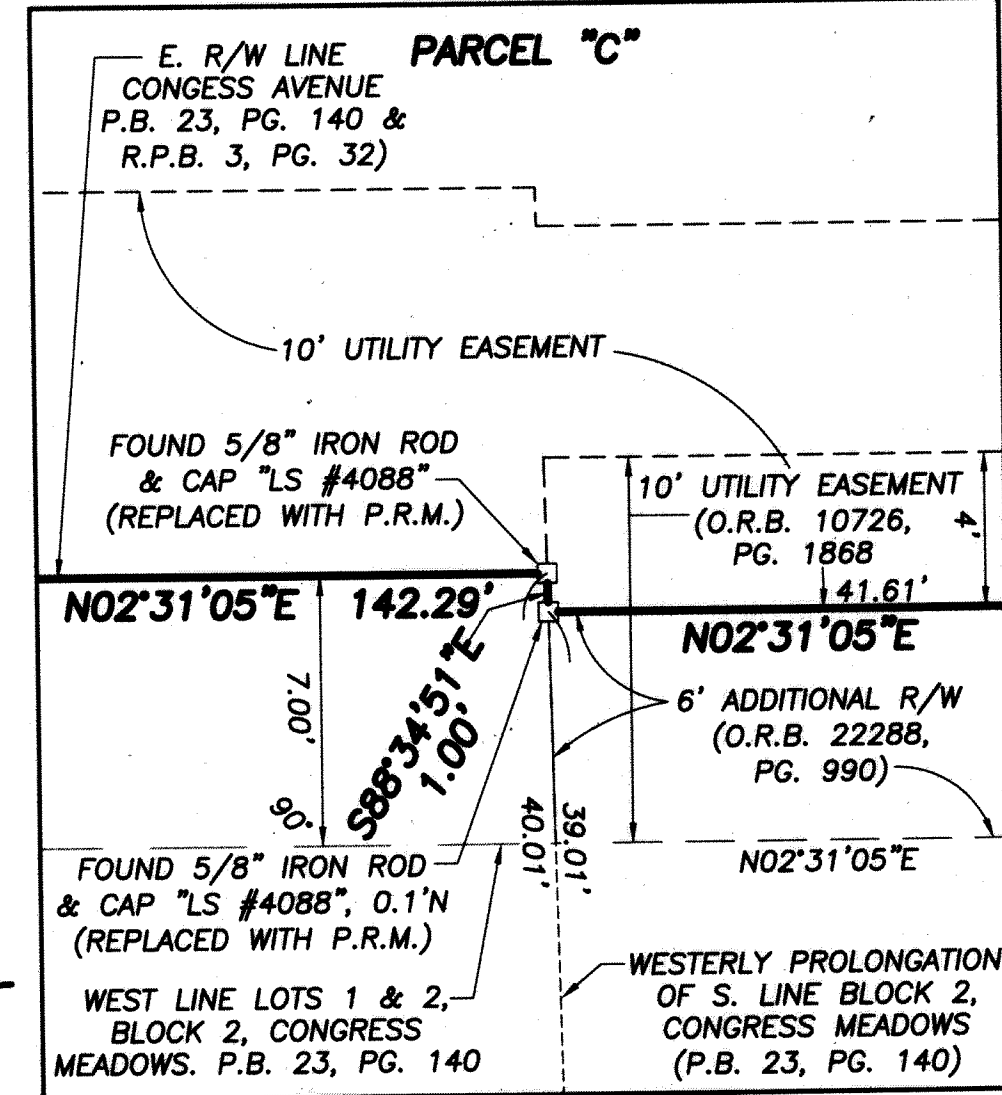
Being a replat of Lot 3 and a portion of Lots 1 and 2, Block 2, CONGRESS MEADOWS, according to the plat thereof as recorded in Plat Book 23, Page 140, Public Records of Palm Beach County, Florida, and an un-platted parcel of land, all lying in Section 5, Township 44 South, Range 43 East, Village of Palm Springs, Palm Beach County, Florida.

190

SHEET 2 OF 2



- ABBREVIATIONS/LEGEND**
- B = BASELINE
  - C.B. = CHORD BEARING
  - (C) = CALCULATED
  - C, C/L = CENTERLINE
  - D.B. = DEED BOOK
  - FPL = FLORIDA POWER & LIGHT
  - L.A.E. = LIMITED ACCESS EASEMENT
  - LB = LICENSED BUSINESS
  - LS = LICENSED SURVEYOR
  - L.W.D.D. = LAKE WORTH DRAINAGE DISTRICT
  - N: = NORTHING (WHEN USED WITH COORDINATE)
  - E: = EASTING (WHEN USED WITH COORDINATE)
  - O.R.B. = OFFICIAL RECORDS BOOK
  - (P) = PLAT
  - P.B. = PLAT BOOK
  - P.B.C. = PALM BEACH COUNTY
  - PG. = PAGE
  - P.O.B. = POINT OF BEGINNING
  - P.O.C. = POINT OF COMMENCEMENT
  - P.R.M. = PERMANENT REFERENCE MONUMENT
  - R.P.B. = ROAD PLAT BOOK
  - R/W = RIGHT-OF-WAY
  - U.E. = UTILITY EASEMENT
  - V.O.P.S. = VILLAGE OF PALM SPRINGS
  - Δ = CENTRAL ANGLE
  - R = ARC (LENGTH)
  - ⊙ = RADIUS
  - ⊠ = SET 4"x4" CONCRETE MONUMENT WITH DISK STAMPED "P.R.M. LB #4569"
  - ⊡ = FOUND 4"x4" CONCRETE MONUMENT (AS NOTED)
  - ⊙ = SET 5/8" IRON ROD & CAP STAMPED "WALLACE LB #4569"
  - ⊙ = FOUND IRON ROD AND CAP (AS NOTED)
  - ⊙ = SET MAG NAIL & DISK STAMPED "P.R.M. LB #4569"



**DETAIL "A"**  
(SCALE: 1"=5')

**PREPARING SURVEYOR & MAPPER'S STATEMENT**

THIS INSTRUMENT WAS PREPARED BY:  
 ROBERT J. CAJAL  
 WALLACE SURVEYING CORPORATION  
 LICENSED BUSINESS NUMBER 4569  
 5553 VILLAGE BOULEVARD  
 WEST PALM BEACH, FL 33407  
 561/640-4551

<b>WALLACE SURVEYING</b> CORP. LICENSED BUSINESS # 4569		
5553 VILLAGE BOULEVARD, WEST PALM BEACH, FLORIDA 33407 • (561) 640-4551		
FIELD:	JOB No.: 16-1158.1	F.B. PG.
OFFICE: R.C.	DATE: APRIL 2016	DWG. No.: 16-1758-1
C/K'D:	REF.: 16-1158-1.DWG	SHEET 2 OF 2

LOT 8, BLOCK 4,  
 PLAT No. 1 PALM BEACH PLANTATIONS  
 (P.B. 10, PG. 20)