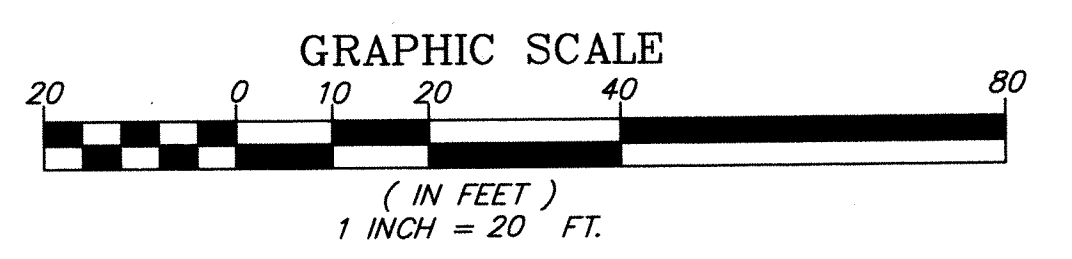


# APEC - HAVERHILL

A REPLAT OF A PORTION OF TRACT 49, MODEL LAND COMPANY,  
RECORDED IN PLAT BOOK 5, PAGE 77  
LYING IN SECTION 35, TOWNSHIP 43 SOUTH, RANGE 42 EAST,  
PALM BEACH COUNTY, FLORIDA.

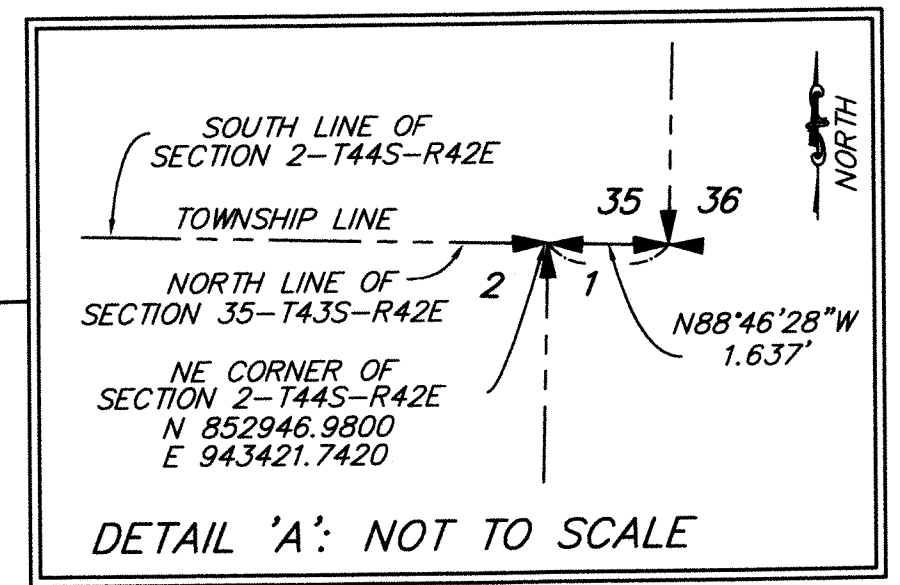
- LEGEND AND ABBREVIATIONS**
- = SET 4"x4" CONCRETE MONUMENT (P.R.M. P.S.M. 5647)
  - = SET 5/8" IRON ROD & CAP (P.S.M. 5647)
  - ⊕ = SECTION CORNER
  - ▲ = 1/4 CORNER
  - P.B. = PLAT BOOK
  - R = RADIUS
  - D = DELTA
  - L = LENGTH
  - F.D.O.T. = FLORIDA DEPARTMENT OF TRANSPORTATION
  - CHB = CHORD BEARING
  - O.R.B. = OFFICIAL RECORDS BOOK
  - P.G. PAGE
  - P.R.M. = PERMANENT REFERENCE MONUMENT
  - P.S.M. = PROFESSIONAL SURVEYOR AND MAPPER
  - L.S. = LICENSED SURVEYOR
  - I.R.C. = IRON ROD & CAP
  - T43S = TOWNSHIP 43 SOUTH
  - R42E = RANGE 42 EAST
  - P.C. = POINT OF CURVATURE
  - P.T. = POINT OF TANGENCY
  - N.T. = NON-TANGENT INTERSECTION

**STATE PLANE DATA:**  
 COORDINATES SHOWN ARE GRID DATUM  
 HORIZONTAL DATUM = NAD 83 (1990 ADJUSTMENT)  
 ZONE = FLORIDA EAST  
 COORDINATE SYSTEM = 1983 STATE PLANE  
 TRANSVERSE MERCATOR PROJECTION  
 LINEAR UNIT = U.S. SURVEY FOOT  
 ALL DISTANCES ARE GROUND UNLESS OTHERWISE SHOWN  
 SCALE FACTOR = 1.0003581  
 GROUND DISTANCE X SCALE FACTOR = GRID DISTANCE.  
 ALL BEARINGS SHOWN HEREON ARE REFERENCED TO THE EAST  
 LINE OF SECTION, T35S, R42E (GRID BEARING OF N01°22'23"E)



ZONING CONTROL NO. 2006-00522

THIS INSTRUMENT WAS PREPARED BY:  
 CRAIG D. WATSON  
 PROFESSIONAL SURVEYOR AND MAPPER L.S. 5647  
 STATE OF FLORIDA  
 IN THE OFFICE OF  
**WATSON | KILLANE**  
 SURVEYING AND MAPPING, INC.  
 2240 NE DIXIE HIGHWAY  
 JENSEN BEACH, FLORIDA 34957  
 PHONE (772) 334-0868  
 EMAIL: WATSONKILLANE@GMAIL.COM  
 LICENSED BUSINESS NO. 8241



SOUTHEAST CORNER OF SECTION 35-7435-R42E  
 FOUND PALM BEACH COUNTY BRASS DISK  
 N 852946.9450, E 943423.3780 (PALM BEACH COUNTY POSITION)