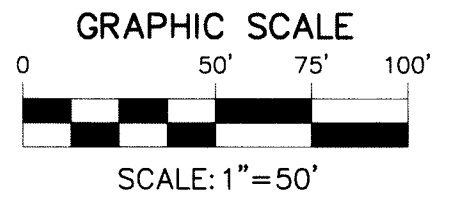
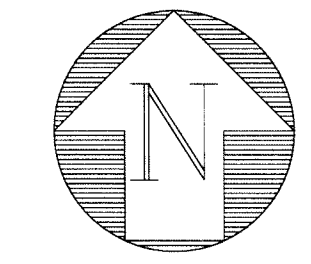


NORTON MUSEUM OF ART

A SUBDIVISION IN SECTIONS 27 AND 28, TOWNSHIP 43 SOUTH, RANGE 43 EAST, PALM BEACH COUNTY, FLORIDA, BEING IN PART, A REPLAT OF PORTIONS OF THE FOLLOWING SUBDIVISIONS: JEFFERSON PARK, PLAT BOOK 1, PAGE 90, WOODLAWN PARK ADDITION TO WEST PALM BEACH, FLORIDA, PLAT BOOK 2, PAGE 2, CRANESNEST PARK, PLAT BOOK 6, PAGE 83, PIONEER PARK ADDITION, PLAT BOOK 8, PAGE 67. ALL RECORDED IN THE PUBLIC RECORDS OF PALM BEACH COUNTY, FLORIDA



47

DECEMBER 2018

ABBREVIATIONS AND SYMBOLS

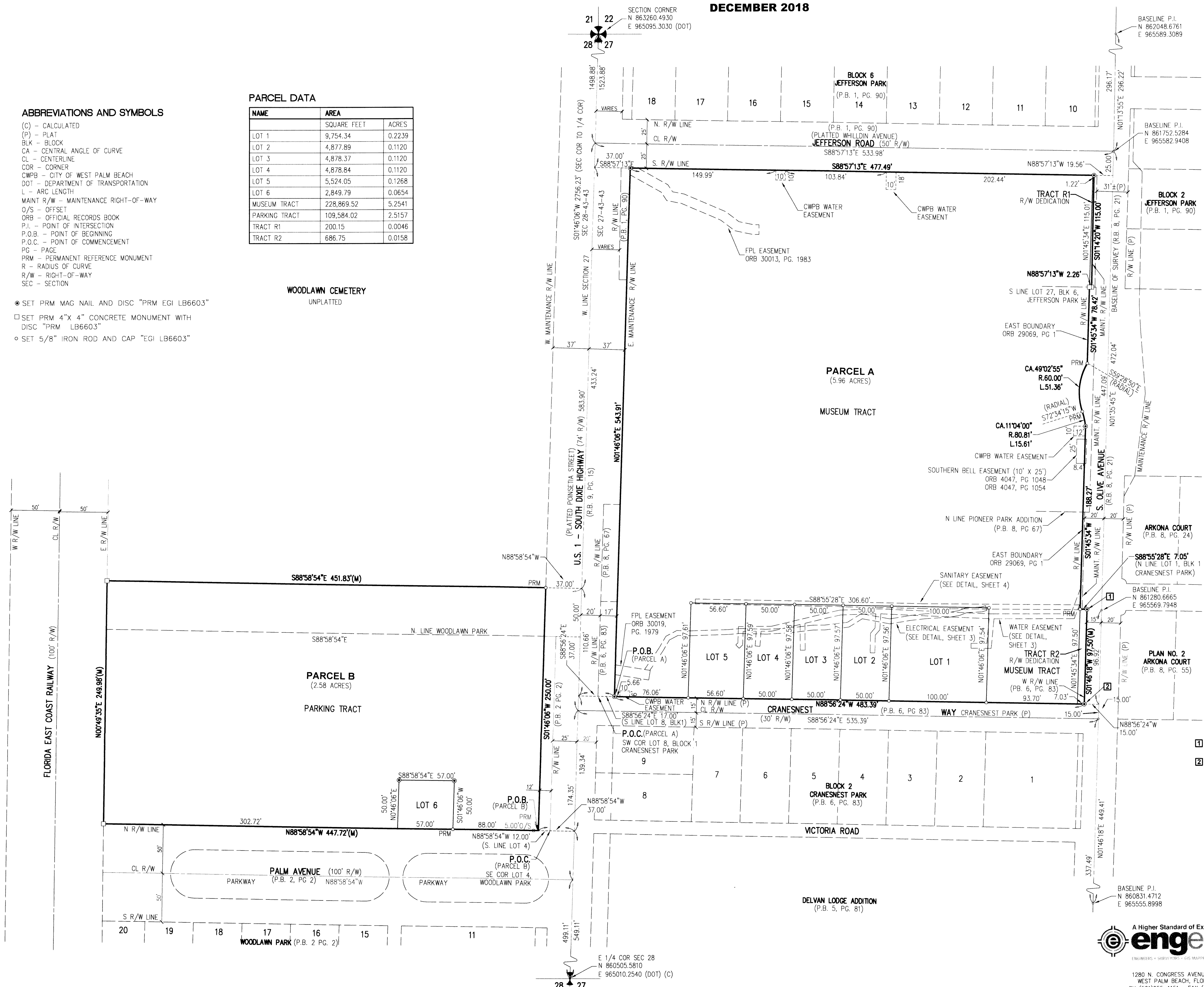
- (C) - CALCULATED
- (P) - PLAT
- BLK - BLOCK
- CA - CENTRAL ANGLE OF CURVE
- CL - CENTERLINE
- COR - CORNER
- CWPB - CITY OF WEST PALM BEACH
- DOT - DEPARTMENT OF TRANSPORTATION
- L - ARC LENGTH
- MAINT R/W - MAINTENANCE RIGHT-OF-WAY
- O/S - OFFSET
- ORB - OFFICIAL RECORDS BOOK
- P.I. - POINT OF INTERSECTION
- P.O.B. - POINT OF BEGINNING
- P.O.C. - POINT OF COMMENCEMENT
- PG - PAGE
- PRM - PERMANENT REFERENCE MONUMENT
- R - RADIUS OF CURVE
- R/W - RIGHT-OF-WAY
- SEC - SECTION

PARCEL DATA

NAME	SQUARE FEET	ACRES
LOT 1	9,754.34	0.2239
LOT 2	4,877.89	0.1120
LOT 3	4,878.37	0.1120
LOT 4	4,878.84	0.1120
LOT 5	5,524.05	0.1268
LOT 6	2,849.79	0.0654
MUSEUM TRACT	228,869.52	5.2541
PARKING TRACT	109,584.02	2.5157
TRACT R1	200.15	0.0046
TRACT R2	686.75	0.0158

- SET PRM MAG NAIL AND DISC "PRM EGI LB6603"
- SET PRM 4"X 4" CONCRETE MONUMENT WITH DISC "PRM LB6603"
- SET 5/8" IRON ROD AND CAP "EGI LB6603"

WOODLAWN CEMETERY
UNPLATTED



NORTON MUSEUM OF ART

DATE	09/17/2018
SCALE	1"=50'
CAD FILE	00001.05plat
DSK PROJECT	00001
DRAWN	JJR
CHECKED	JCM

2/4

JOB NO.
00001.05

A Higher Standard of Excellence

engenuity group inc.

ENGINEERS • SURVEYORS • PLANNERS

1280 N. CONGRESS AVENUE, SUITE 101,
WEST PALM BEACH, FLORIDA 33405
PH (561)655-1151 • FAX (561)832-9390
WWW.ENGENUITYGROUP.COM

Y:\Land Projects R2\00001\dwg_0001 Plot 2018.dwg 12/11/2018 12:18:54 PM EST