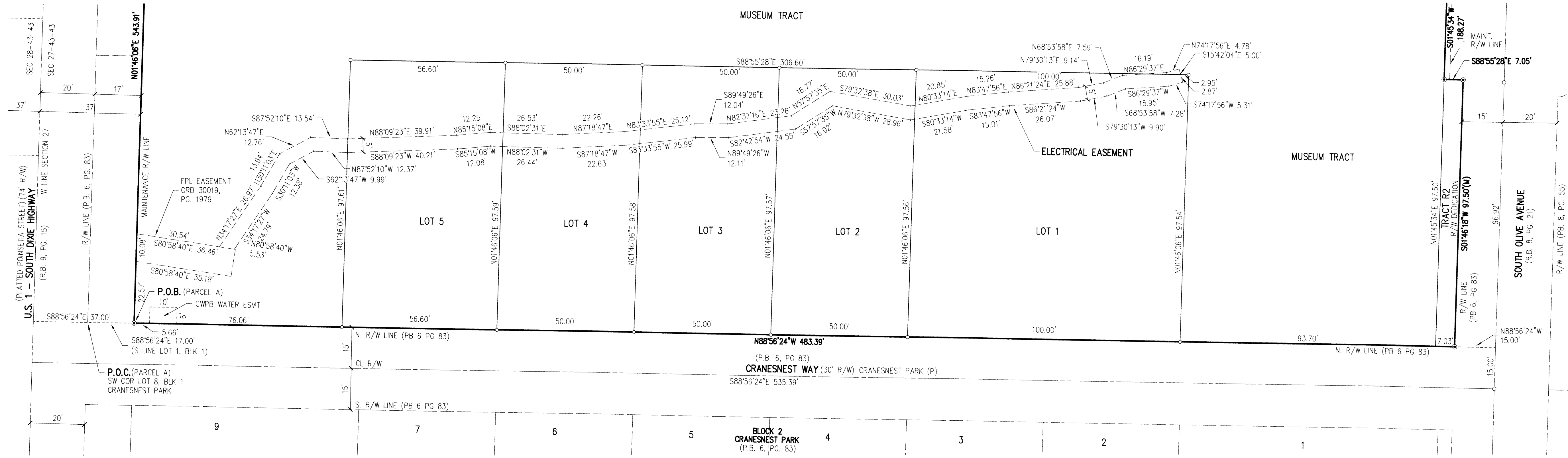


NORTON MUSEUM OF ART

A SUBDIVISION IN SECTIONS 27 AND 28, TOWNSHIP 43 SOUTH, RANGE 43 EAST, PALM BEACH COUNTY, FLORIDA, BEING IN PART, A REPLAT OF PORTIONS OF THE FOLLOWING SUBDIVISIONS: JEFFERSON PARK, PLAT BOOK 1, PAGE 90, WOODLAWN PARK ADDITION TO WEST PALM BEACH, FLORIDA, PLAT BOOK 2, PAGE 2, CRANESNEST PARK, PLAT BOOK 6, PAGE 83, PIONEER PARK ADDITION, PLAT BOOK 8, PAGE 67. ALL RECORDED IN THE PUBLIC RECORDS OF PALM BEACH COUNTY, FLORIDA

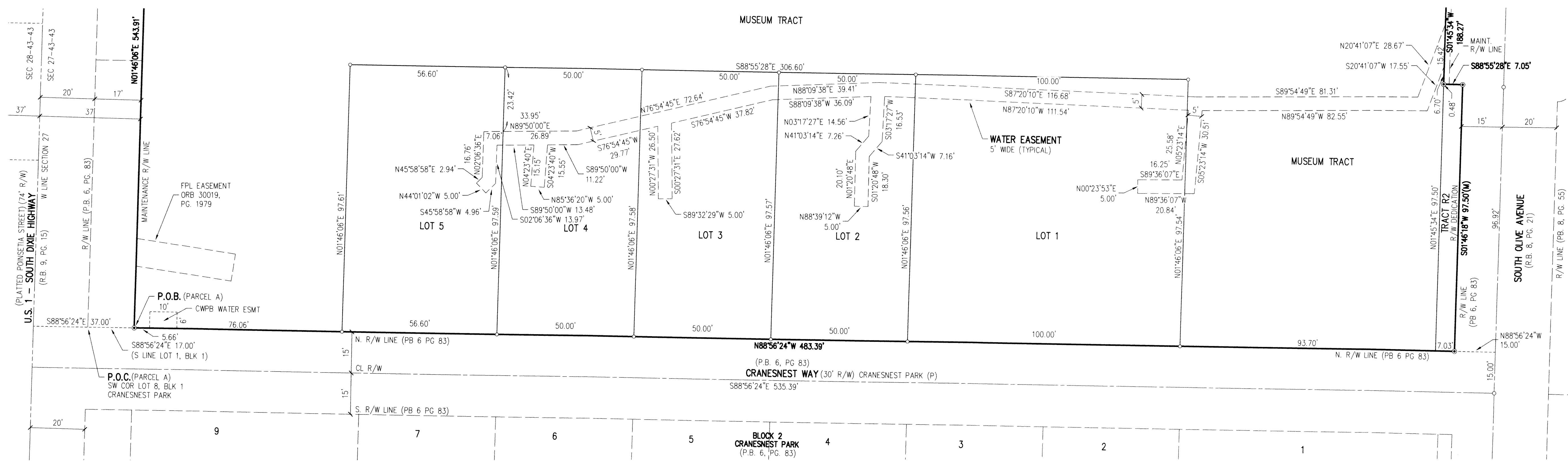
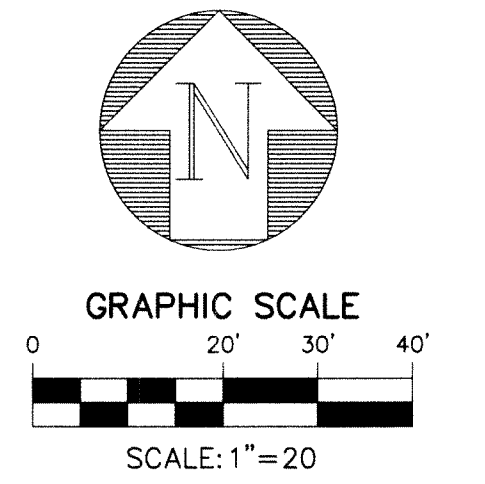
48

DECEMBER 2018



ELECTRICAL EASEMENT DETAIL

SCALE: 1"=20'



WATER EASEMENT DETAIL

SCALE: 1"=20'

NORTON MUSEUM OF ART

A Higher Standard of Excellence
engenuity group inc.
ENGINEERS • SURVEYORS • GIS MAPPERS

DATE	09/17/2018
SCALE	1"=20'
CAD FILE	00001.05plat
SOSK PROJECT	00001
DRAWN	JJR
CHECKED	JCM

3/4
JOB NO.
00001.05

Y:\Land Projects R2\00001.dwg\0001 Plat 2018.dwg 11/13/2018 8:46:36 AM EST