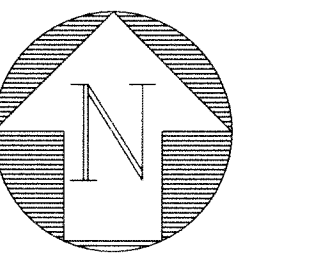


NORTON MUSEUM OF ART

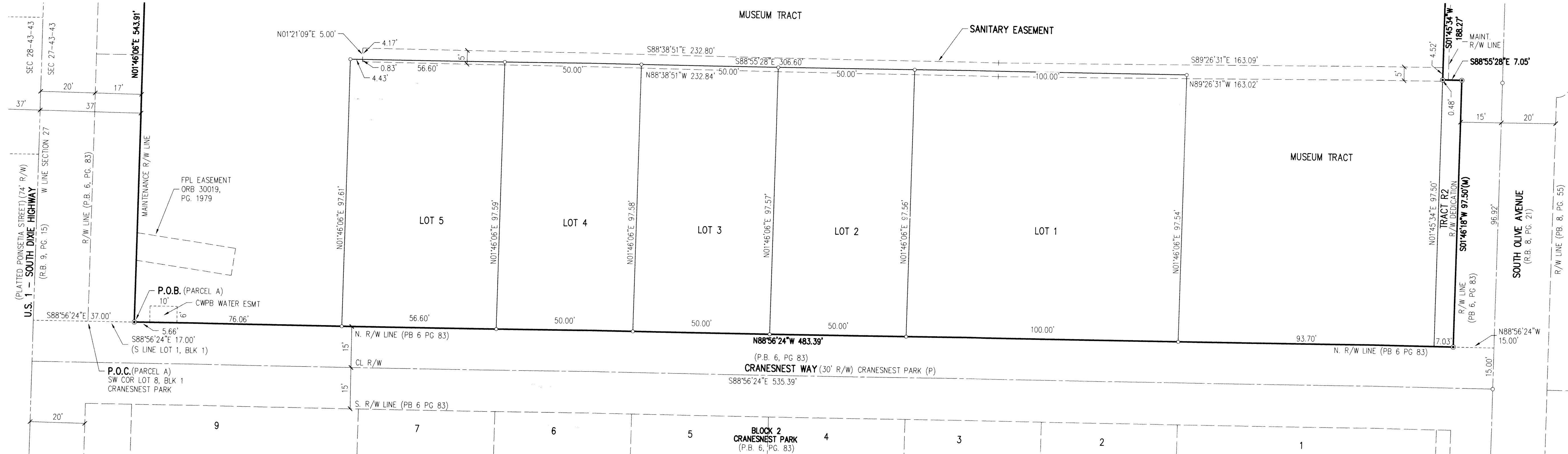
A SUBDIVISION IN SECTIONS 27 AND 28, TOWNSHIP 43 SOUTH, RANGE 43 EAST, PALM BEACH COUNTY, FLORIDA. BEING IN PART, A REPLAT OF PORTIONS OF THE FOLLOWING SUBDIVISIONS: JEFFERSON PARK, PLAT BOOK 1, PAGE 90, WOODLAWN PARK ADDITION TO WEST PALM BEACH, FLORIDA, PLAT BOOK 2, PAGE 2, CRANESNEST PARK, PLAT BOOK 6, PAGE 83, PIONEER PARK ADDITION, PLAT BOOK 8, PAGE 67. ALL RECORDED IN THE PUBLIC RECORDS OF PALM BEACH COUNTY, FLORIDA

DECEMBER 2018

49



GRAPHIC SCALE
0 20' 30' 40'
SCALE: 1"=20'



SANITARY EASEMENT DETAIL
SCALE: 1"=20'

X:\Land Projects R2\00001\dwg\0001_Plot_2018.dwg 11/13/2018 8:46:36 AM EST

NORTON MUSEUM OF ART

A Higher Standard of Excellence
engenuity
group inc.
ENGINEERS • SURVEYORS • GIS MAPPERS

1280 N. CONGRESS AVENUE, SUITE 101,
WEST PALM BEACH, FLORIDA 33409
PH (561) 655-1151 • FAX (561) 832-9390
WWW.ENGUITYGROUP.COM

DATE	09/17/2018
SCALE	1"=20'
CAD FILE	00001.05plat
SPSK PROJECT	00001
DRAWN	JJR
CHECKED	JCM

S H E E T	4/4
	JOB NO. 00001.05