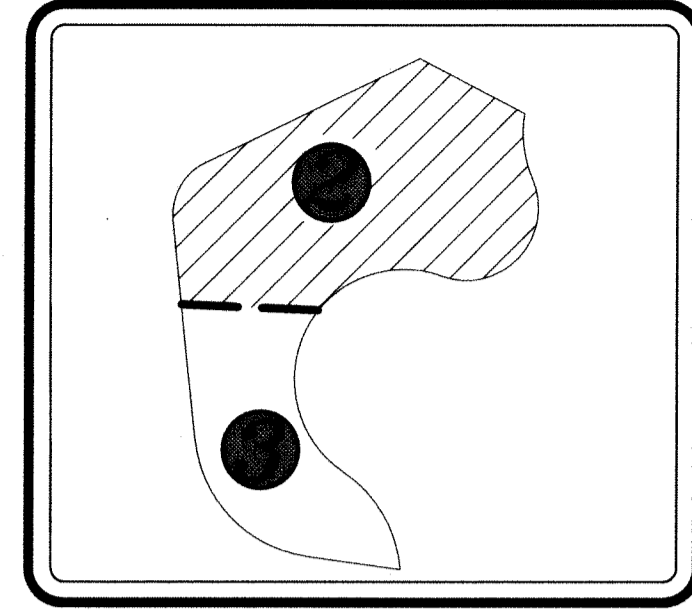
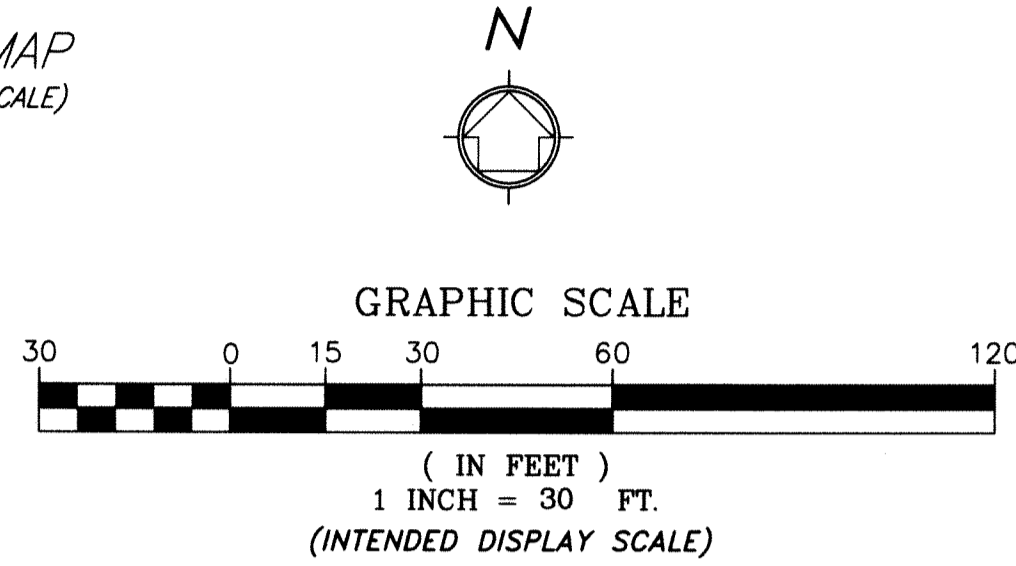


# BOGA GROVE PLANTATION RECREATION TRACT "E", REPLAT NO. 1

BEING A REPLAT OF ALL OF TRACT "E" AND A PORTION OF TRACT "L" BOGA GROVE PLANTATION P.U.D., AS RECORDED IN PLAT BOOK 43, AT PAGE 179 THROUGH 183 INCLUSIVE, OF THE PUBLIC RECORDS OF PALM BEACH COUNTY, FLORIDA SAID LANDS LYING AND SITUATE IN SECTION 21, TOWNSHIP 47 SOUTH, RANGE 42 EAST, PALM BEACH COUNTY, FLORIDA.

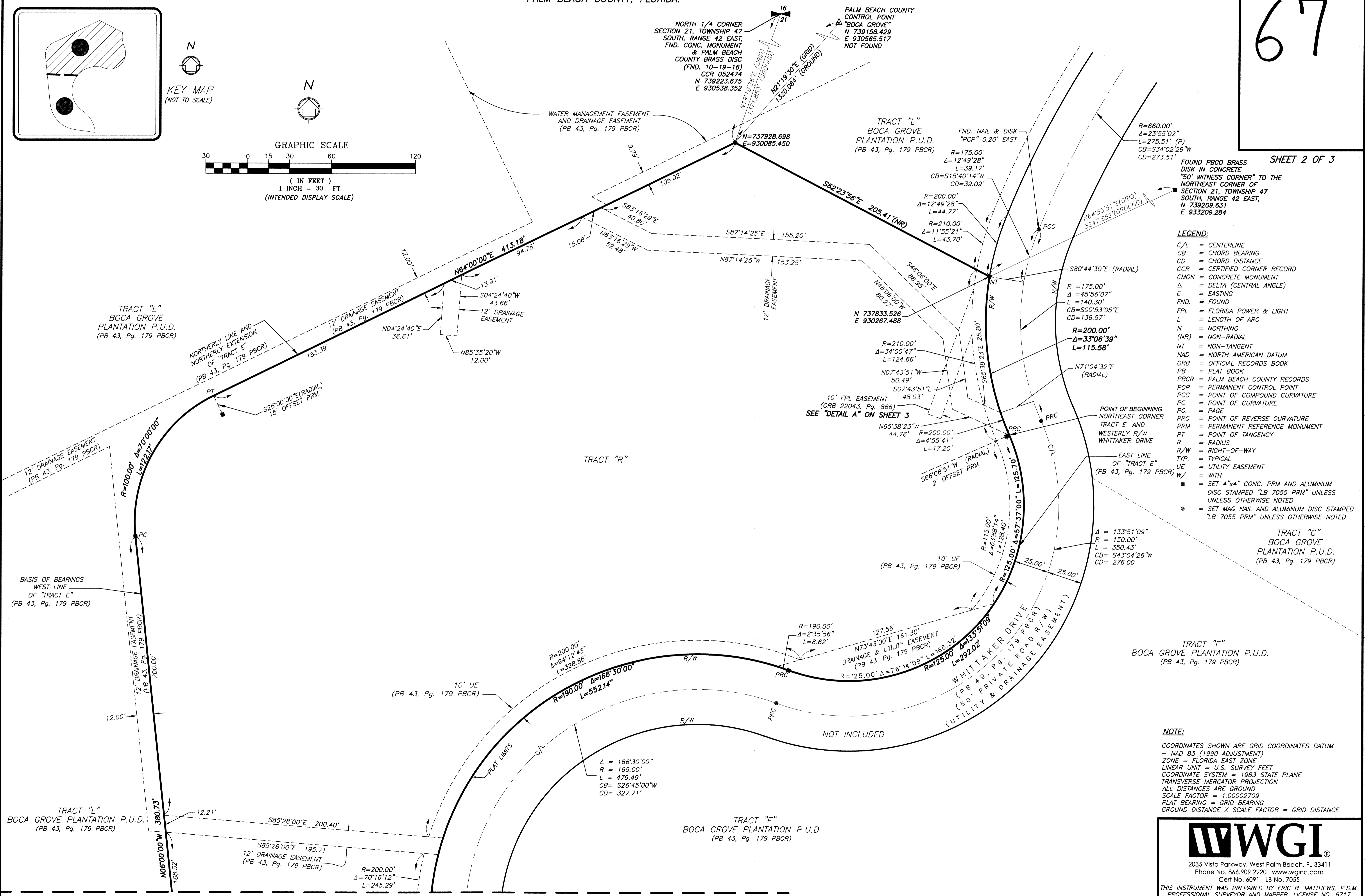


KEY MAP  
(NOT TO SCALE)



67

SHEET 2 OF 3



- LEGEND:**
- C/L = CENTERLINE
  - CB = CHORD BEARING
  - CD = CHORD DISTANCE
  - CCR = CERTIFIED CORNER RECORD
  - CMON = CONCRETE MONUMENT
  - Δ = DELTA (CENTRAL ANGLE)
  - E = EASTING
  - FND. = FOUND
  - FPL = FLORIDA POWER & LIGHT
  - L = LENGTH OF ARC
  - N = NORTHING
  - (NR) = NON-RADIAL
  - NT = NON-TANGENT
  - NAD = NORTH AMERICAN DATUM
  - ORB = OFFICIAL RECORDS BOOK
  - PB = PLAT BOOK
  - PBCR = PALM BEACH COUNTY RECORDS
  - PCP = PERMANENT CONTROL POINT
  - PCC = POINT OF COMPOUND CURVATURE
  - PC = POINT OF CURVATURE
  - PG. = PAGE
  - PRC = POINT OF REVERSE CURVATURE
  - PRM = PERMANENT REFERENCE MONUMENT
  - PT = POINT OF TANGENCY
  - R = RADIUS
  - R/W = RIGHT-OF-WAY
  - TYP. = TYPICAL
  - UE = UTILITY EASEMENT
  - W/ = WITH
  - = SET 4"x4" CONC. PRM AND ALUMINUM DISC STAMPED "LB 7055 PRM" UNLESS OTHERWISE NOTED
  - = SET MAG NAIL AND ALUMINUM DISC STAMPED "LB 7055 PRM" UNLESS OTHERWISE NOTED

**NOTE:**  
 COORDINATES SHOWN ARE GRID COORDINATES DATUM - NAD 83 (1990 ADJUSTMENT)  
 ZONE = FLORIDA EAST ZONE  
 LINEAR UNIT = U.S. SURVEY FEET  
 COORDINATE SYSTEM = 1983 STATE PLANE TRANSVERSE MERCATOR PROJECTION  
 ALL DISTANCES ARE GROUND  
 SCALE FACTOR = 1.00002709  
 PLAT BEARING = GRID BEARING  
 GROUND DISTANCE X SCALE FACTOR = GRID DISTANCE

**WGI**  
 2035 Vista Parkway, West Palm Beach, FL 33411  
 Phone No. 866.909.2220 www.wginc.com  
 Cert No. 6091 - LB No. 7055  
 THIS INSTRUMENT WAS PREPARED BY ERIC R. MATTHEWS, P.S.M. PROFESSIONAL SURVEYOR AND MAPPER, LICENSE NO. 6717 FOR THE FIRM: WANTMAN GROUP, INC.

MATCHLINE SEE SHEET 3