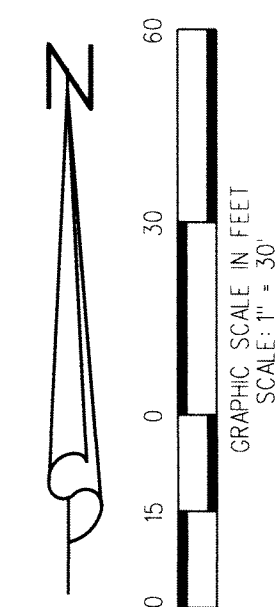
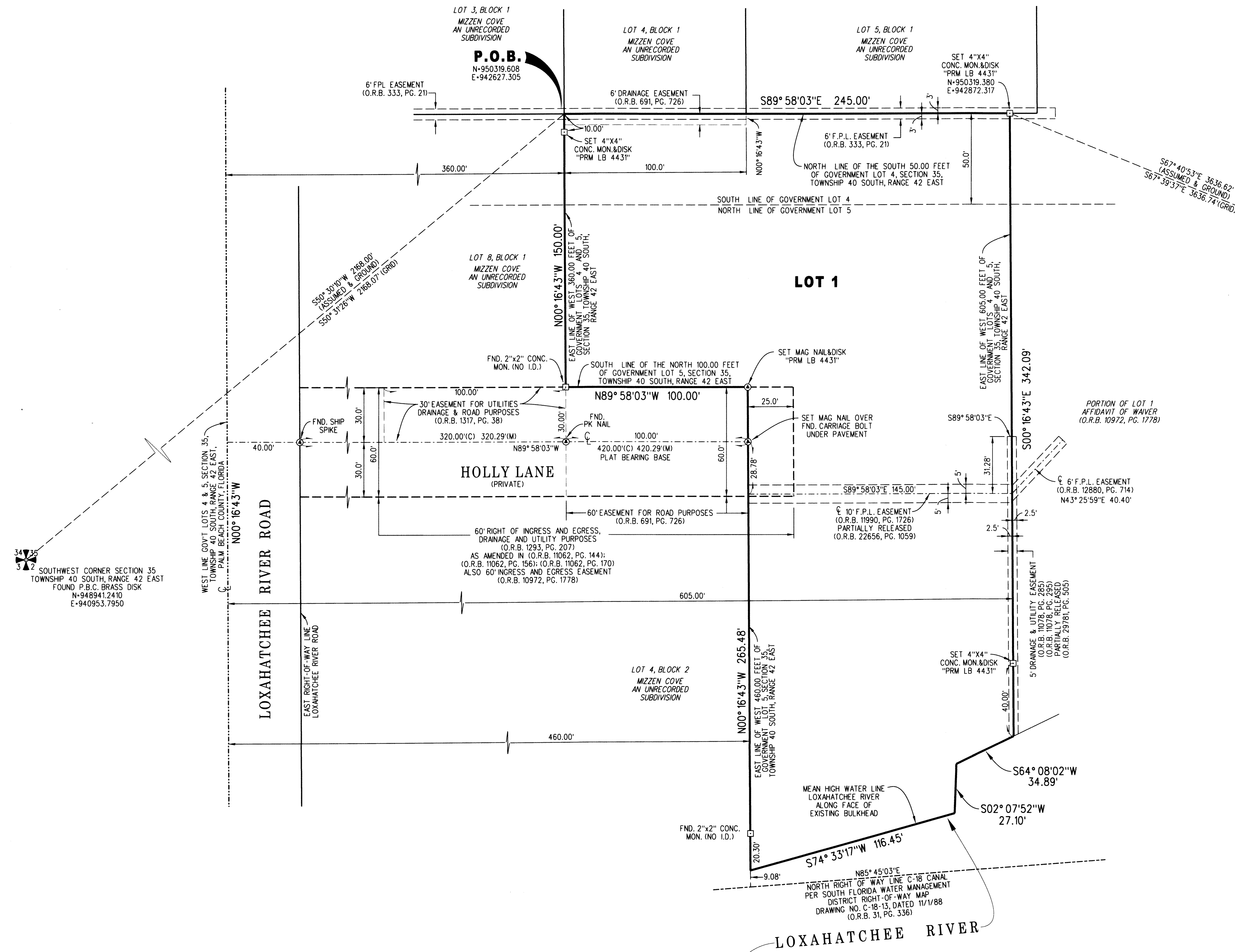


# BIONDO PLAT

BEING A PORTION OF LOT 1 AND ALL OF LOTS 2 & 3 ACCORDING TO THE AFFIDAVIT OF WAIVER,  
RECORDED IN OFFICIAL RECORD BOOK 10972, PAGE 1778, PUBLIC RECORDS OF PALM BEACH COUNTY, FLORIDA  
LYING IN GOVERNMENT LOTS 4 AND 5, SECTION 35, TOWNSHIP 40 SOUTH, RANGE 42 EAST,  
PALM BEACH COUNTY, FLORIDA

72

SHEET 2 OF 2



**ABBREVIATIONS:**

- |        |                                    |      |              |
|--------|------------------------------------|------|--------------|
| CONC.  | = CONCRETE                         | E    | = EAST       |
| F.P.L. | = FLORIDA POWER & LIGHT COMPANY    | N    | = NORTH      |
| FND.   | = FOUND                            | N.E. | = NORTHEAST  |
| LB     | = LICENSE BOARD                    | N.W. | = NORTHWEST  |
| MON.   | = MONUMENT                         | S    | = SOUTH      |
| O.R.B. | = OFFICIAL RECORD BOOK             | S.E. | = SOUTHWEST  |
| P.B.   | = PLAT BOOK                        | S.W. | = WEST       |
| P.B.C. | = PALM BEACH COUNTY                | W    | = WEST       |
| P.O.B. | = POINT OF BEGINNING               | (C)  | = CALCULATE  |
| P.R.M. | = PERMANENT REFERENCE MONUMENT     | (M)  | = MEASURE    |
| P.S.M. | = PROFESSIONAL SURVEYOR AND MAPPER | ⊙    | = CENTERLINE |
| PG.    | = PAGE                             |      |              |
| PGS.   | = PAGES                            |      |              |
| R/W    | = RIGHT OF WAY                     |      |              |

**PLAT POSITION AND ORIENTATION:**

COORDINATES SHOWN HEREON ARE GRID AND ARE BASED ON THE NORTH AMERICAN DATUM OF 1983, 1990 ADJUSTMENT (NAD83/90), FLORIDA STATE PLANE TRANSVERSE MERCATOR PROJECTION.

DISTANCES SHOWN HEREON ARE GROUND DISTANCES UNLESS OTHERWISE NOTED.

DATUM = NORTH AMERICAN DATUM OF 1983 (NAD83), 1990 ADJUSTMENT

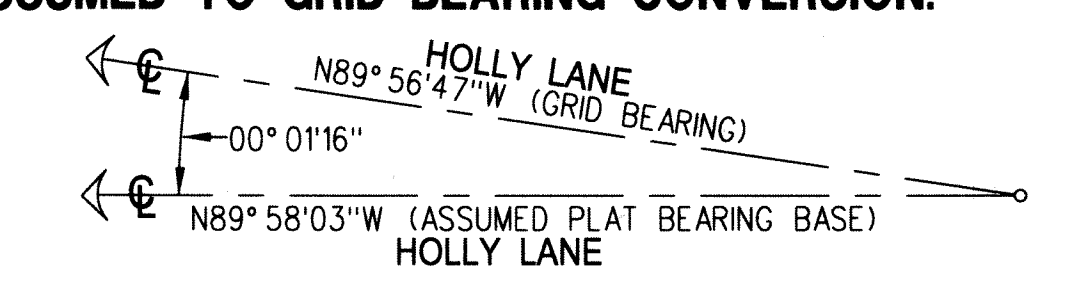
ZONE = FLORIDA EAST

LINEAR UNITS = US SURVEY FOOT

SCALE FACTOR = 1.000034161

GROUND DISTANCES X SCALE FACTOR = GRID DISTANCE

**ASSUMED TO GRID BEARING CONVERSION:**



TO CONVERT ASSUMED PLAT BEARINGS TO STATE PLANE GRID BEARINGS ROTATE PLAT BEARINGS 00°01'16\"/>

		CAD. K:\UST \ 354042 \ 16-092A-306 \ 16-092A-306.DGN	
		REF.	
FLD.		FB.	PG.
OFF.	R.J.W.		JOB 16-092A-306
CKD.	D.C.L.	SHEET 2 OF 2	DATE 06/04/2018
675 West Indiantown Road, Suite 200, Jupiter, Florida 33458 TEL. 561-746-8454			DWG. D16-092P