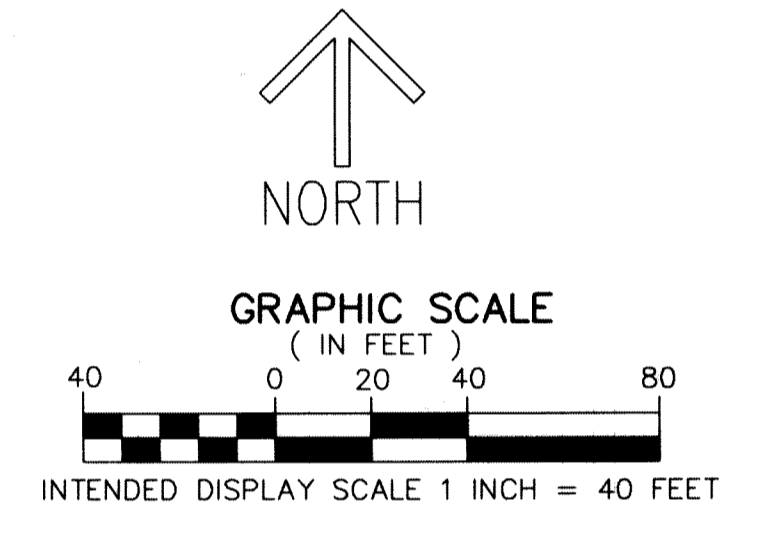
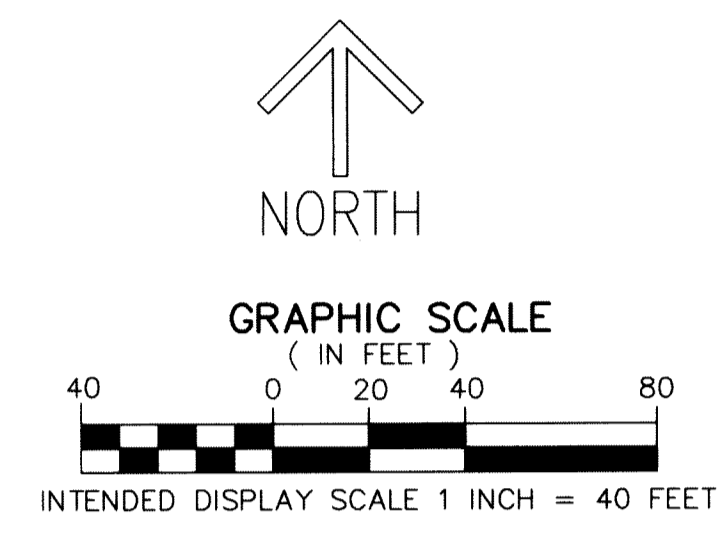
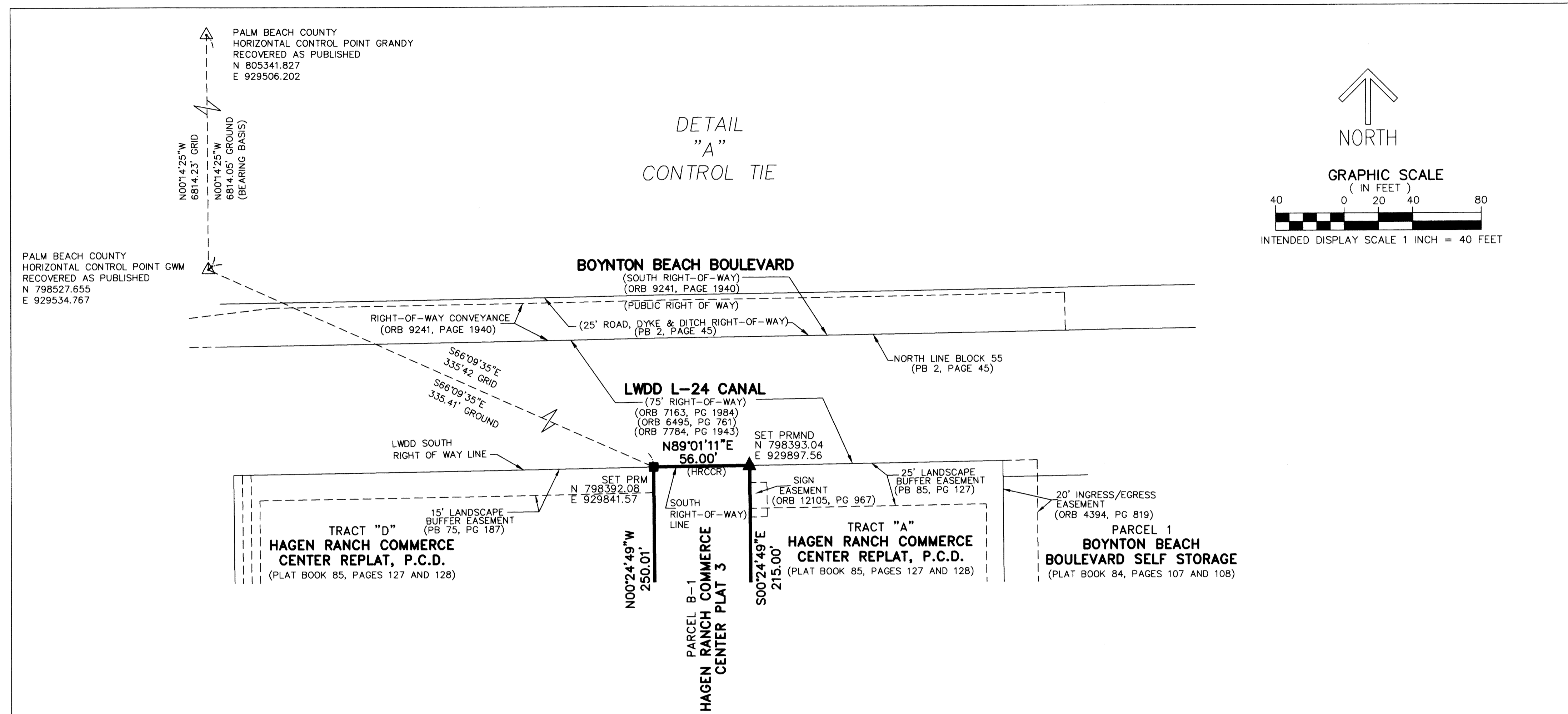


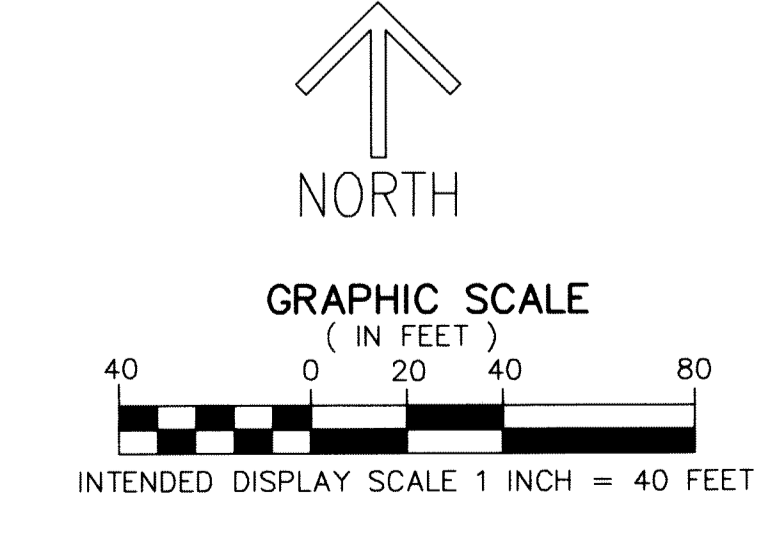
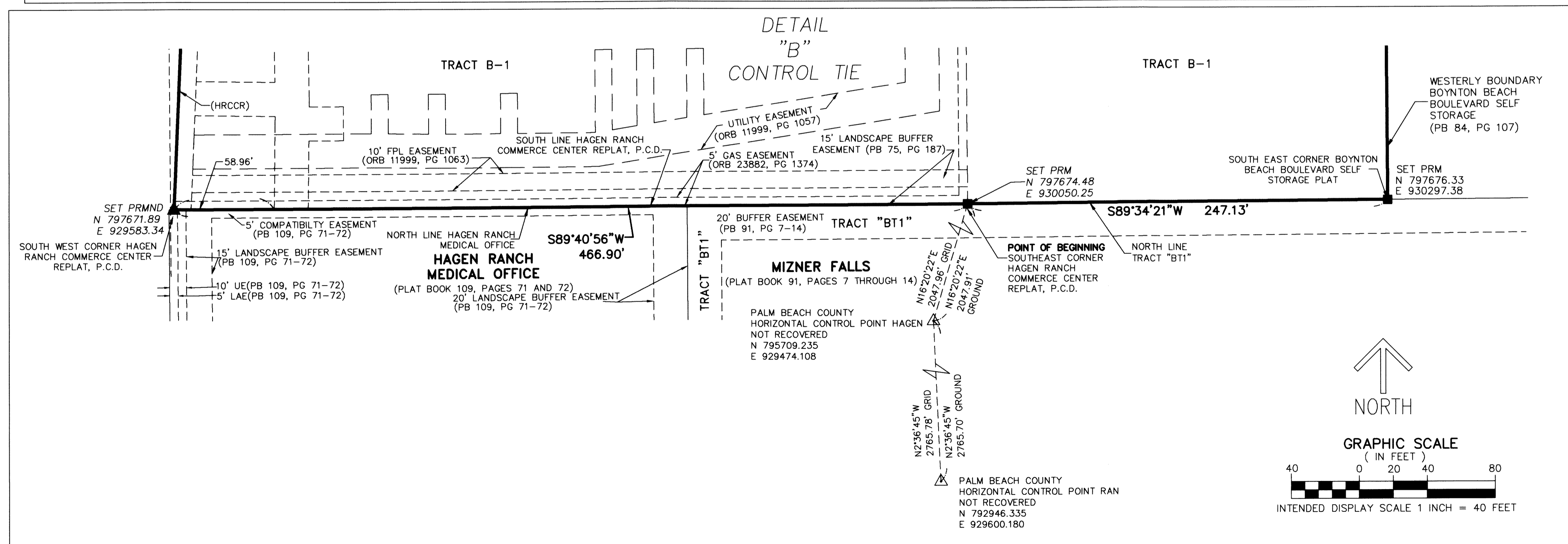
HAGEN RANCH COMMERCE CENTER PLAT 3

AN MUPD
 BEING A REPLAT OF ALL OF TRACT B, HAGEN RANCH COMMERCE CENTER REPLAT, P.C.D., AS RECORDED IN PLAT BOOK 85, PAGES 127 AND 128, TOGETHER WITH A PORTION OF TRACTS 6 AND 7, BLOCK 55, THE PALM BEACH FARMS COMPANY PLAT NO. 3, AS RECORDED IN PLAT BOOK 2, PAGES 45 THROUGH 54, ALL OF THE PUBLIC RECORDS OF PALM BEACH COUNTY, FLORIDA, LYING IN SECTION 28, TOWNSHIP 45, SOUTH, RANGE 42 EAST, PALM BEACH COUNTY, FLORIDA,

75
 SHEET 3 OF 3



THIS INSTRUMENT PREPARED BY
 RONNIE L. FURNISS
 OF
CAULFIELD and WHEELER, INC.
 SURVEYORS - ENGINEERS - PLANNERS
 7900 GLADES ROAD, SUITE 100
 BOCA RATON, FLORIDA 33434 - (561)392-1991
 CERTIFICATE OF AUTHORIZATION NO. LB3591



NOTES
 COORDINATES, BEARINGS AND DISTANCES
 COORDINATES SHOWN ARE GRID
 DATUM = NAD 83, 1990 ADJUSTMENT
 ZONE = FLORIDA EAST
 LINEAR UNIT = US SURVEY FEET
 COORDINATE SYSTEM 1983 STATE PLANE
 TRANSVERSE MERCATOR PROJECTION
 ALL DISTANCES ARE GROUND, UNLESS NOTED OTHERWISE
 SCALE FACTOR = 1.0000268
 GROUND DISTANCE X SCALE FACTOR = GRID DISTANCE
 BEARINGS AS SHOWN HEREON ARE GRID DATUM,
 NAD 83, 1990 ADJUSTMENT, FLORIDA EAST ZONE.