

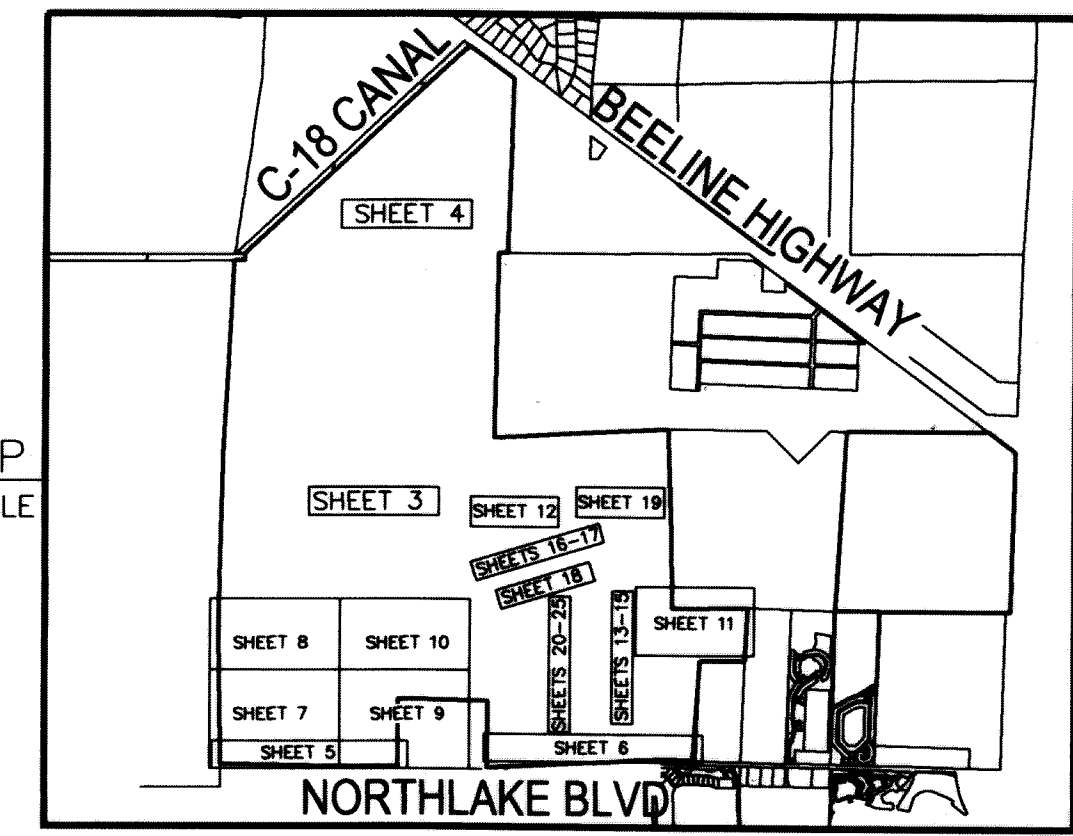
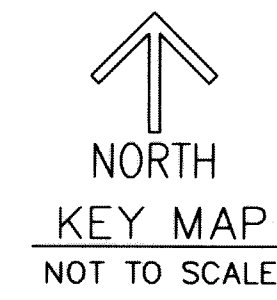
# AVENIR

BEING A PORTION OF SECTIONS 28, 32, 33,  
TOWNSHIP 41 SOUTH, RANGE 41 EAST,  
TOGETHER WITH ALL OF SECTIONS 4, 9 AND 10,  
AND A PORTION OF SECTIONS 5, 8, 14, 15, 16 AND 17,  
TOWNSHIP 42 SOUTH, RANGE 41 EAST,  
CITY OF PALM BEACH GARDENS, PALM BEACH COUNTY, FLORIDA

THIS INSTRUMENT PREPARED BY  
RONNIE L. FURNISS  
OF  
**CAULFIELD and WHEELER, INC.**  
SURVEYORS - ENGINEERS - PLANNERS  
7900 GLADES ROAD, SUITE 100  
BOCA RATON, FLORIDA 33434 - (561)392-1991  
CERTIFICATE OF AUTHORIZATION NO. LB3591  
NOVEMBER 2018

## LEGEND/ABBREVIATIONS

- |                                      |  |
|--------------------------------------|--|
| ⊕ - CENTERLINE                       | O.R.B. - OFFICIAL RECORD BOOK                        |
| Δ - DELTA (CENTRAL ANGLE)            | FND PBC - FOUND PALM BEACH COUNTY SURVEY MONUMENT    |
| AC - ACRES                           | PBG - PALM BEACH GARDENS                             |
| AE - ACCESS EASEMENT                 | R - RADIUS   |
| CB - CHORD BEARING                   | RB - RADIAL BEARING                                  |
| CD - CHORD DISTANCE                  | RW - RIGHT-OF-WAY                                    |
| CDD - COMMUNITY DEVELOPMENT DISTRICT | SF - SQUARE FEET                                     |
| DE - DRAINAGE EASEMENT               | S.F.W.M.D. - SOUTH FLORIDA WATER MANAGEMENT DISTRICT |
| DB - DEED BOOK                       | SR - STATE ROAD                                      |
| ESMT - EASEMENT                      | SUAE - SEACOAST UTILITY AUTHORITY EASEMENT           |
| L - ARC LENGTH                       | UE - UTILITY EASEMENT                                |
| RBE - ROADWAY BUFFER EASEMENTS       | ■ PRM - DENOTES PERMANENT REFERENCE MONUMENT         |
| LB - LICENSED BUSINESS               | ○ 5/8" IRON ROD WITH CAP STAMPED "C&W PRM LB3591"    |
| MON - MONUMENT                       | ● - DENOTES PERMANENT CONTROL POINT                  |
| PB = PLAT BOOK                       |  |
| PG = PAGE                            |  |

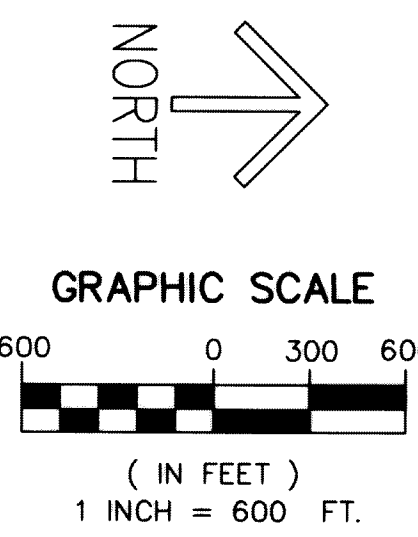
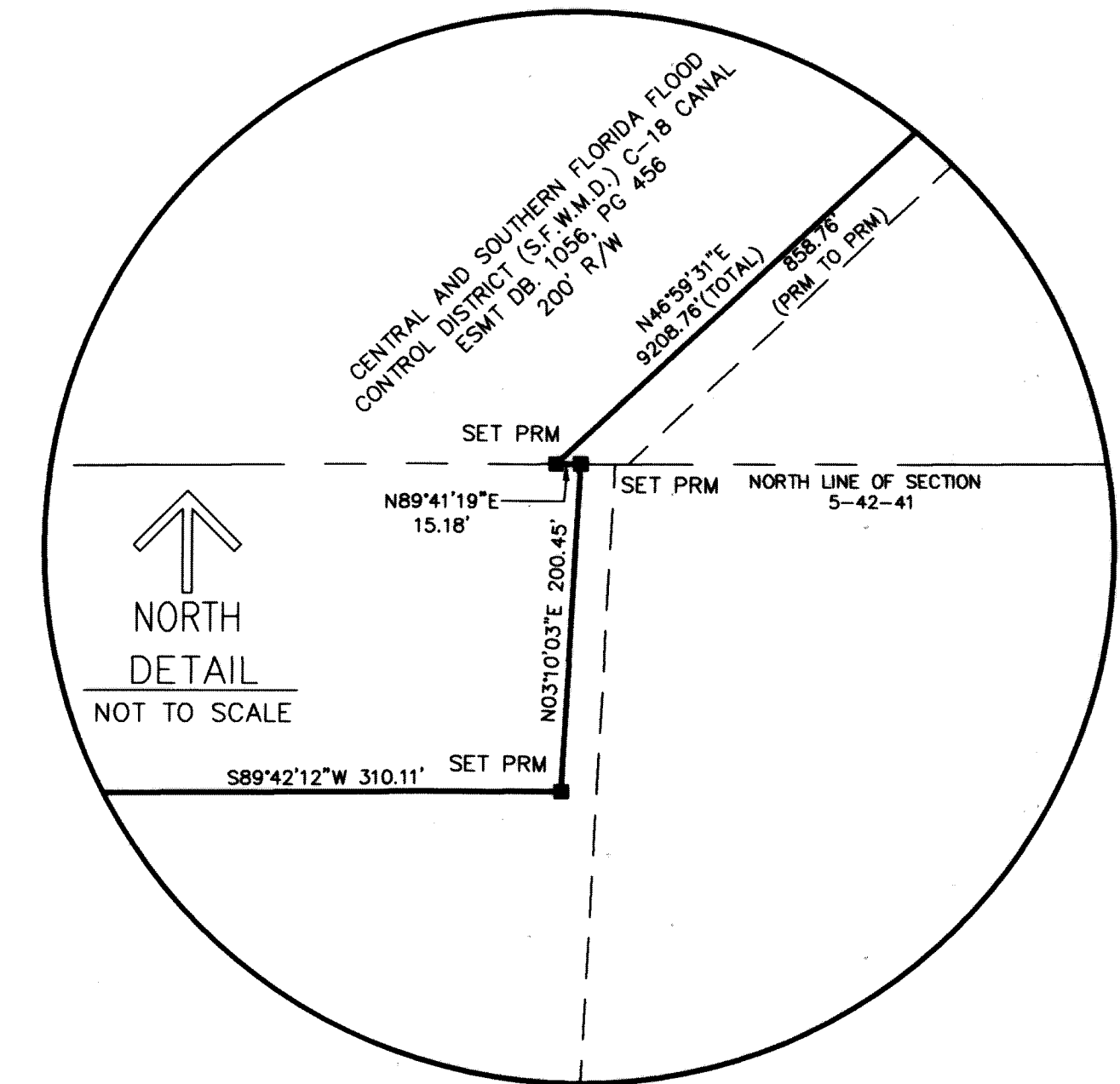


88

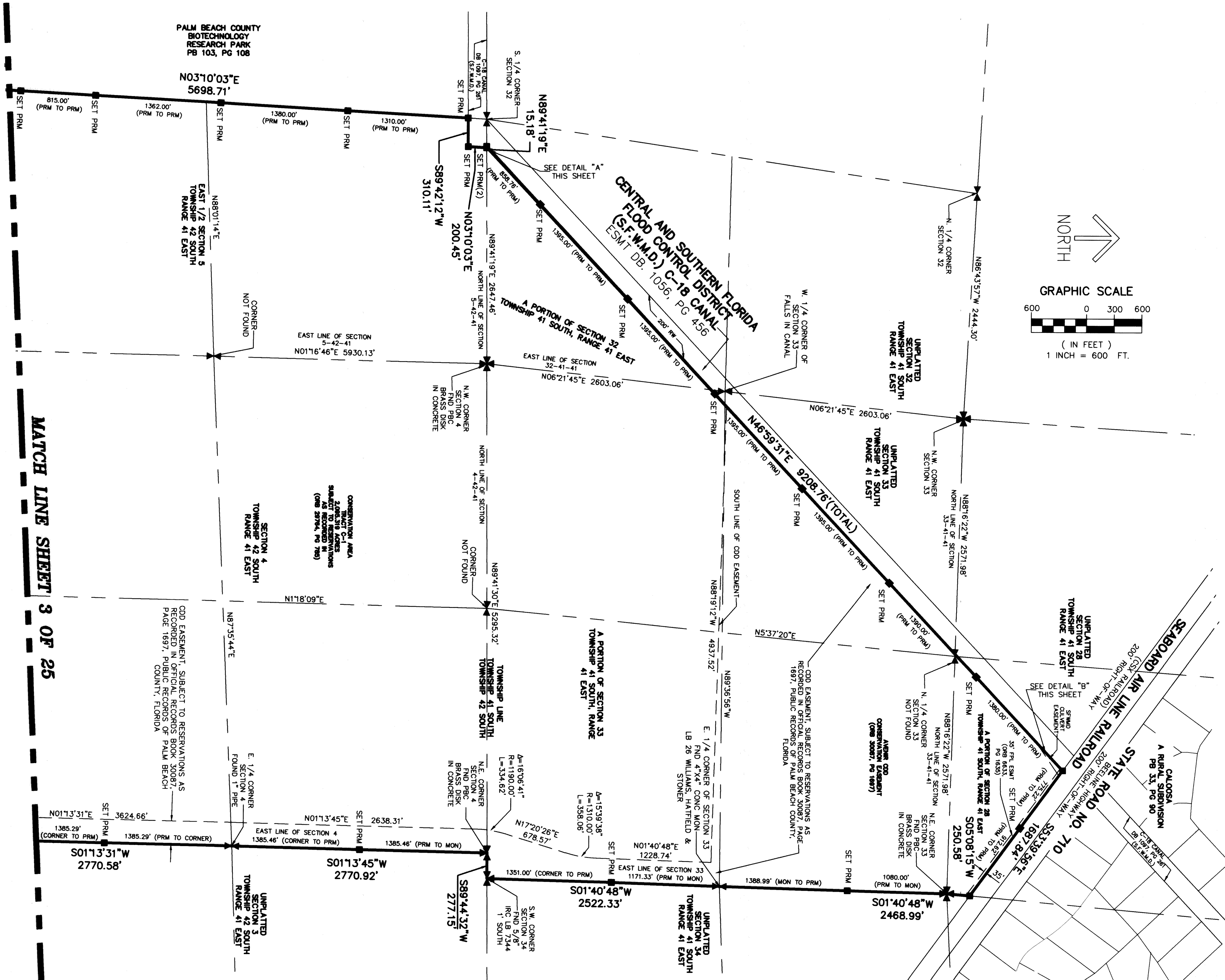
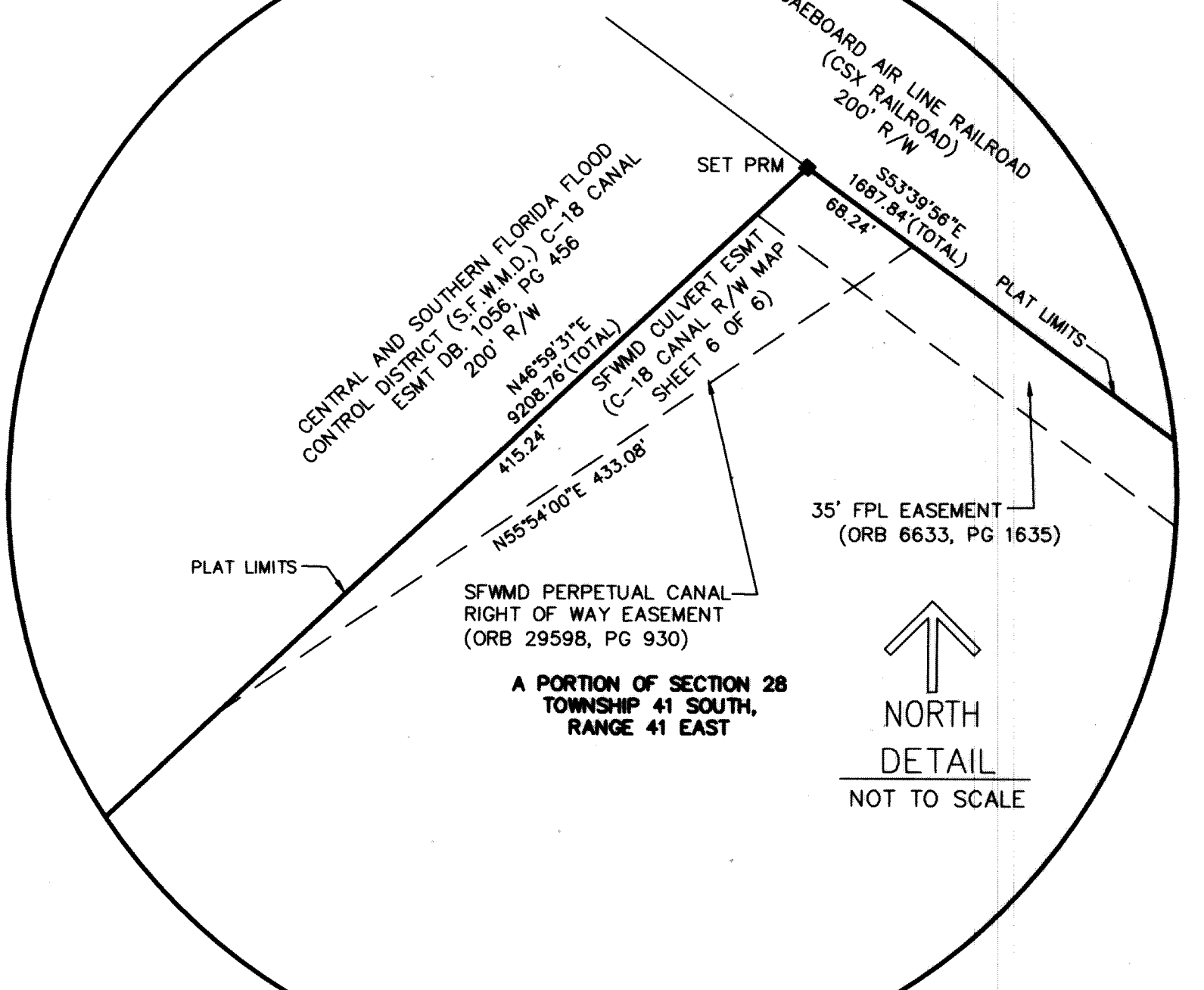
SHEETS 1-2 COVER  
SHEETS 3-4 OVERALL SITE  
SHEETS 5-6 DETAIL SOUTH BOUNDARY  
SHEETS 7-10 DETAIL CONSERVATION AREAS  
SHEET 11 DETAIL PARCEL E/G  
PARK/CIVIC/RECREATION  
SHEET 12 DETAIL CITY ANNEX TRACT  
& PARCEL A-4  
SHEETS 13-18 DETAIL TRACT R1  
SHEET 19 DETAIL PARCEL C  
SHEETS 20-25 DETAIL TRACTS R2 & R3

SHEET 4 OF 25

### DETAIL "A"



### DETAIL "B"



MATCH LINE SHEET 3 OF 25