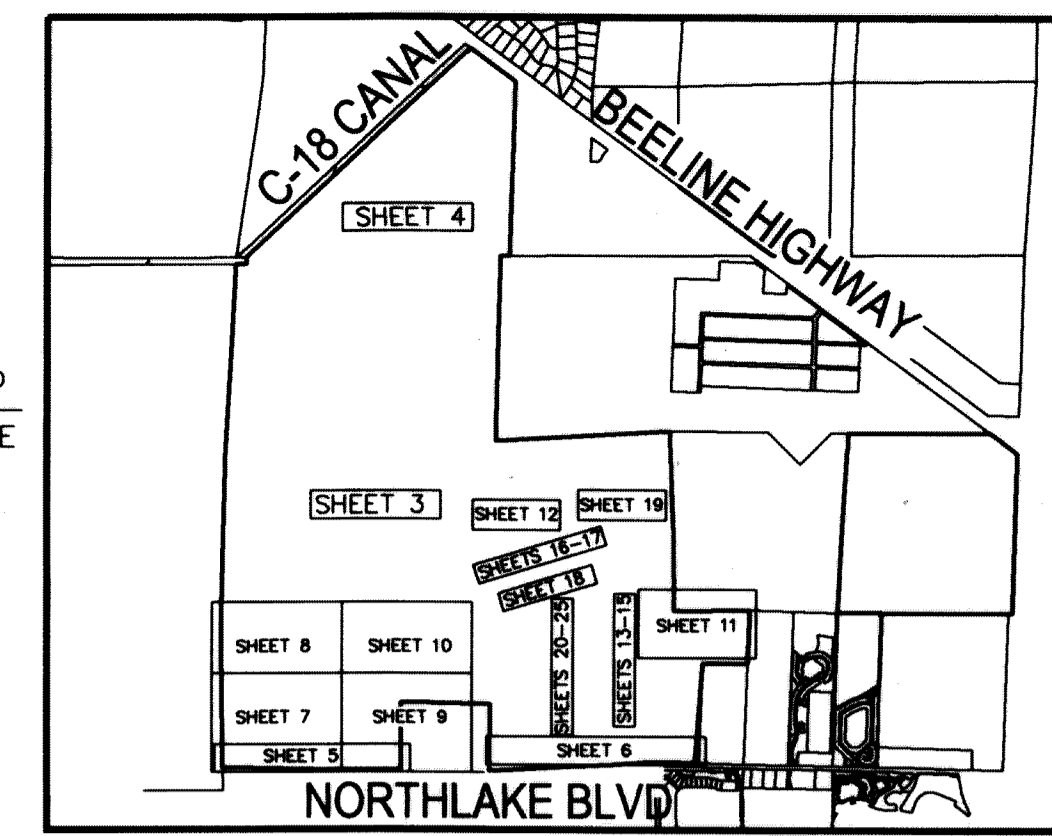
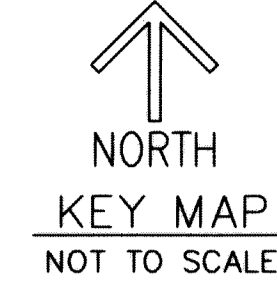
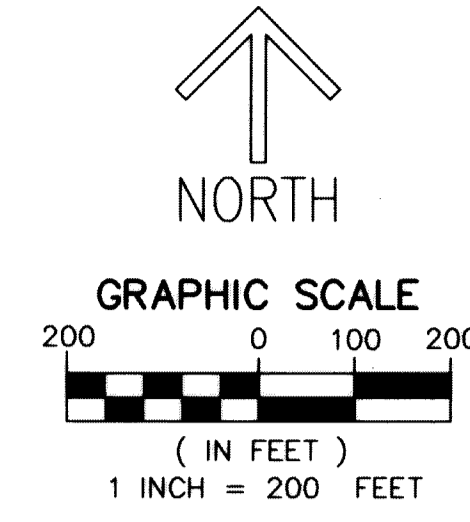


AVENIR

BEING A PORTION OF SECTIONS 28, 32, 33,
TOWNSHIP 41 SOUTH, RANGE 41 EAST,
TOGETHER WITH ALL OF SECTIONS 4, 9 AND 10,
TOWNSHIP 42 SOUTH, RANGE 41 EAST,
CITY OF PALM BEACH GARDENS, PALM BEACH COUNTY, FLORIDA

THIS INSTRUMENT PREPARED BY
RONNIE L. FURNISS

OF
CAULFIELD and WHEELER, INC.
SURVEYORS - ENGINEERS - PLANNERS
7900 GLADES ROAD, SUITE 100
BOCA RATON, FLORIDA 33434 - (561)392-1991
CERTIFICATE OF AUTHORIZATION NO. LB3591
NOVEMBER 2018

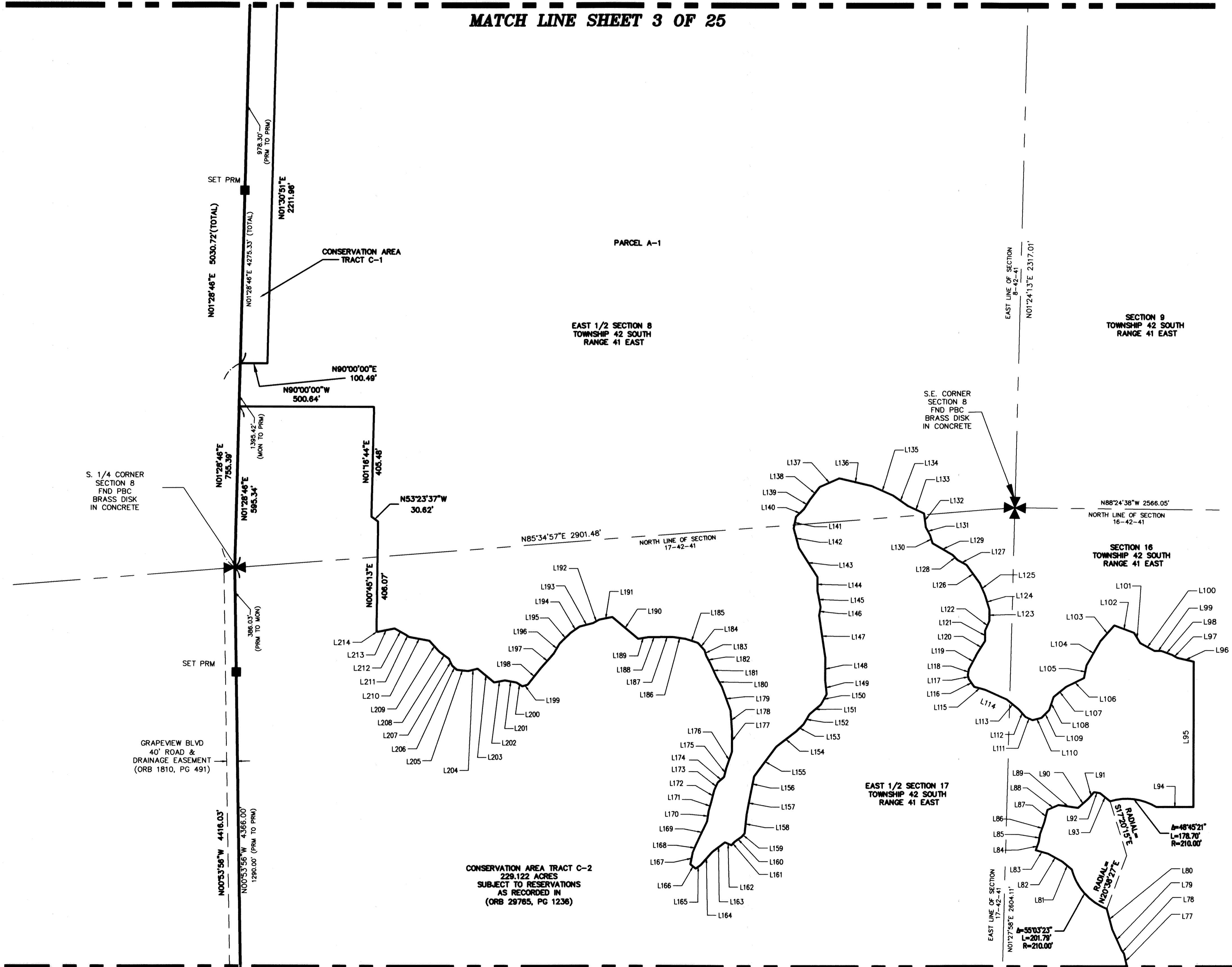


92

LEGEND/ABBREVIATIONS

- CL - CENTERLINE
- Δ - DELTA (CENTRAL ANGLE)
- AC - ACRES
- AE - ACCESS EASEMENT
- CB - CHORD BEARING
- CD - CHORD DISTANCE
- CDD - COMMUNITY DEVELOPMENT DISTRICT
- DE - DRAINAGE EASEMENT
- DB - DEED BOOK
- ESMT - EASEMENT
- L - ARC LENGTH
- RBE - ROADWAY BUFFER EASEMENTS
- LB - LICENSED BUSINESS
- MON - MONUMENT
- PB - PLAT BOOK
- PG = PAGE
- O.R.B. - OFFICIAL RECORD BOOK
- FND PBC - FOUND PALM BEACH COUNTY SURVEY MONUMENT
- PBG - PALM BEACH GARDENS
- R - RADIUS
- RB - RADIAL BEARING
- RW - RIGHT-OF-WAY
- SF - SQUARE FEET
- S.F.W.M.D. - SOUTH FLORIDA WATER MANAGEMENT DISTRICT
- SR - STATE ROAD
- SUAE - SEACOAST UTILITY AUTHORITY EASEMENT
- UE - UTILITY EASEMENT
- PRM - DENOTES PERMANENT REFERENCE MONUMENT
- 5/8" IRON ROD WITH CAP STAMPED "CAW PRM LB3591"
- - DENOTES PERMANENT CONTROL POINT

MATCH LINE SHEET 3 OF 25



MATCH LINE SHEETS 10 OF 25

SHEETS 1-2 COVER
SHEETS 3-4 OVERALL SITE
SHEETS 5-6 DETAIL SOUTH BOUNDARY
SHEETS 7-10 DETAIL CONSERVATION AREAS
SHEET 11 DETAIL PARCEL E/G
PARK/CIVIC/RECREATION
SHEET 12 DETAIL CITY ANNEX TRACT
& PARCEL A-4
SHEETS 13-18 DETAIL TRACT R1
SHEET 19 DETAIL PARCEL C
SHEETS 20-25 DETAIL TRACTS R2 & R3

SHEET 8 OF 25

LINE #	BEARING	DISTANCE
L1	N49°46'38"E	18.91'
L2	N41°34'11"E	41.38'
L3	N46°47'03"E	38.64'
L4	S89°47'34"E	53.17'
L5	S74°45'48"E	66.39'
L6	S81°17'03"E	40.54'
L7	S83°58'24"E	82.83'
L8	N63°26'52"E	87.02'
L9	N62°22'01"E	47.81'
L10	N66°59'06"E	80.08'
L11	N12°18'44"E	23.25'
L12	N57°54'21"E	109.81'
L13	S82°24'02"E	25.28'
L14	N59°38'08"E	152.81'
L15	N49°59'25"E	224.50'
L16	N54°22'49"W	142.83'
L17	N83°58'24"W	48.99'
L18	N78°25'20"W	51.80'
L19	S89°40'05"W	64.40'
L20	N72°40'11"W	28.04'
L21	N37°07'08"W	28.08'
L22	N00°19'57"W	56.82'
L23	N21°22'01"W	54.88'
L24	N34°44'08"W	117.80'
L25	N12°12'55"W	35.72'
L26	N12°18'38"E	25.75'
L27	S85°50'31"W	823.85'
L28	N55°37'11"E	47.11'
L29	S86°33'38"E	18.72'
L30	N48°48'56"E	44.88'

LINE #	BEARING	DISTANCE
L31	N22°09'50"E	87.82'
L32	N35°29'16"E	31.76'
L33	N47°18'27"E	68.08'
L34	N21°51'20"E	110.85'
L35	N47°56'51"E	75.71'
L36	N41°34'04"E	55.36'
L37	S71°03'40"E	25.85'
L38	S50°28'21"E	23.06'
L39	S42°13'54"E	85.24'
L40	S87°39'01"E	58.72'
L41	N47°28'59"E	456.14'
L42	N04°59'45"W	83.48'
L43	N24°29'40"W	40.70'
L44	N07°36'52"W	78.36'
L45	N08°04'02"E	54.40'
L46	N31°13'58"W	22.86'
L47	N89°17'14"E	54.09'
L48	N62°32'16"E	35.16'
L49	N79°08'38"E	31.23'
L50	N69°17'09"E	49.85'
L51	N88°40'05"E	18.19'
L52	S32°16'38"E	32.28'
L53	S48°38'41"E	41.78'
L54	S48°38'42"E	45.79'
L55	S72°40'00"E	78.45'
L56	S82°24'08"E	47.77'
L57	N69°40'01"E	59.51'
L58	N74°05'48"E	72.83'
L59	S86°33'38"E	53.73'
L60	S68°18'18"E	106.80'

LINE #	BEARING	DISTANCE
L61	S19°24'38"W	31.67'
L62	S42°44'00"E	37.80'
L63	S34°18'12"E	34.85'
L64	S88°18'21"E	20.48'
L65	S89°38'47"E	228.23'
L66	N41°33'58"E	83.97'
L67	N69°17'09"E	52.48'
L68	N53°03'02"E	60.27'
L69	N41°33'48"E	71.53'
L70	N23°48'42"E	42.42'
L71	N18°59'06"W	54.16'
L72	N21°52'08"W	61.17'
L73	N42°14'03"W	50.48'
L74	N53°03'01"W	40.09'
L75	N18°59'06"W	6.38'
L76	N02°20'09"W	38.35'
L77	N12°58'04"W	55.75'
L78	N34°16'18"W	17.73'
L79	N24°29'43"W	82.05'
L80	N14°42'44"W	79.54'
L81	N50°28'28"W	45.67'
L82	N42°13'17"W	61.33'
L83	N74°45'50"W	48.87'
L84	N19°24'28"E	32.28'
L85	N69°50'26"E	30.49'
L86	N20°41'54"E	44.52'
L87	N14°02'38"E	48.69'
L88	N65°38'14"E	44.56'
L89	S81°17'12"E	73.39'
L90	N47°56'35"E	48.67'

LINE #	BEARING	DISTANCE
L91	N41°33'57"E	54.09'
L92	S78°22'37"E	22.01'
L93	S51°18'21"E	47.88'
L94	N00°00'00"E	537.59'
L95	N78°54'04"W	61.85'
L96	N61°12'17"W	23.38'
L97	N69°57'59"W	41.50'
L98	S89°38'47"E	25.15'
L99	N61°12'13"W	61.48'
L100	N31°13'10"W	44.45'
L101	N89°57'11"W	77.98'
L102	N47°14'03"W	77.38'
L103	S34°18'12"E	102.67'
L104	S10°36'28"W	48.49'
L105	S64°03'37"W	74.67'
L106	S58°18'18"E	58.86'
L107	S18°15'42"W	62.35'
L108	S48°38'42"E	38.81'
L109	S75°45'14"W	54.79'
L110	N84°48'54"W	28.52'
L111	N42°13'17"W	37.50'
L112	N50°28'28"W	57.81'
L113	N68°18'18"E	66.11'
L114	N74°45'50"W	42.88'
L115	N74°45'50"W	42.88'
L116	N34°16'18"W	35.51'
L117	N12°58'04"W	15.00'
L118	N09°50'26"E	64.25'
L119	N27°38'57"E	21.78'
L120	N32°10'22"E	56.10'

LINE #	BEARING	DISTANCE
L121	N21°19'57"W	38.83'
L122	N23°46'35"E	38.84'
L123	N19°19'56"W	38.20'
L124	N16°59'03"W	62.21'
L125	N24°29'35"W	44.00'
L126	N36°00'12"W	82.88'
L127	N61°12'07"W	38.75'
L128	N42°13'54"W	24.42'
L129	N59°52'00"W	88.26'
L130	N18°59'06"W	31.18'
L131	N28°37'37"E	32.32'
L132	N07°38'11"E	51.67'
L133	N64°30'42"E	68.09'
L134	N55°01'27"E	67.57'
L135	N66°18'48"W	86.88'
L136	N78°52'32"W	123.56'
L137	S86°23'02"W	78.71'
L138	S37°43'00"W	58.63'
L139	S31°46'54"W	43.18'
L140	S47°08'30"W	38.89'
L141	S10°37'58"W	43.68'
L142	S14°38'33"E	74.46'
L143	S32°41'23"E	128.59'
L144	S00°19'58"E	52.88'
L145	S10°30'19"E	58.29'
L146	S06°32'27"E	154.84'
L148	S00°19'58"E	90.55'
L149	S08°01'34"E	48.17'
L150	S28°58'55"W	43.10'

LINE #	BEARING	DISTANCE
L151	S48°46'38"E	56.32'
L152	S32°33'08"W	43.03'
L153	S48°46'35"W	39.81'
L154	S52°00'43"W	91.44'
L155	S38°52'18"W	138.41'
L156	S10°36'35"W	57.39'
L157	S10°34'56"W	86.54'
L158	S08°03'57"W	70.00'
L159	S41°33'58"W	16.76'
L160	S85°53'42"W	32.70'
L161	S41°34'02"W	17.48'
L162	S60°32'13"W	28.17'
L163	S53°03'10"W	57.77'
L164	S41°33'58"W	85.12'
L165	S53°03'14"W	23.05'
L166	N51°05'50"W	25.82'
L167	N10°56'38"E	44.79'
L168	N23°46'46"E	37.02'
L169	N25°40'41"E	88.47'
L170	N08°10'21"E	39.92'
L171	N18°19'05"E	36.88'
L172	N14°02'46"E	42.14'
L173	N23°46'41"E	31.94'
L174	N49°46'28"E	31.08'
L175	N12°18'38"E	31.78'
L176	N19°24'38"E	67.17'
L177	N00°19'57"W	78.65'
L178	N04°37'27"W	72.83'
L179	N20°04'28"W	83.12'
L180	N28°37'35"W	42.25'

LINE #	BEARING	DISTANCE
L181	N24°29'36"W	53.12'
L182	N28°37'29"W	32.76'
L183	N18°59'06"W	22.02'
L184	N42°14'03"W	38.82'
L185	N72°40'02"W	48.82'
L186	N81°17'06"W	42.39'
L187	S89°40'03"W	50.90'
L188	S89°40'09"W	45.48'
L189	S85°53'16"W	38.84'
L190	N50°28'18"W	125.08'
L191	S79°08'44"W	48.04'
L192	S60°32'13"W	28.04'
L193	S75°45'28"W	51.44'
L194	S55°03'47"W	38.24'
L195	S45°58'32"W	58.18'
L196	S33°15'15"W	43.33'
L197	S41°34'00"W	72.58'
L198	S38°54'25"W	77.47'
L199	S72°00'17"W	21.09'
L200	N58°33'35"W	25.80'

LINE #	BEARING	DISTANCE
L201	N09°42'27"W	44.11'
L202	S80°03'16"W	40.08'
L203	N50°37'10"W	78.29'
L204	S77°06'13"W	38.50'
L205	N83°58'18"W	42.58'
L206	N48°38'28"W	23.11'
L207	N24°29'29"W	27.74'
L208	N54°48'54"W	44.84'
L209	N42°14'03"W	54.83'
L210	N09°48'29"W	76.43'
L211	N53°42'38"W	13.80'
L212	N61°15'57"W	47.89'
L213	S79°08'44"W	64.76'
L214	N58°18'18"E	4.12'

MATCH LINE SHEET 7 OF 25