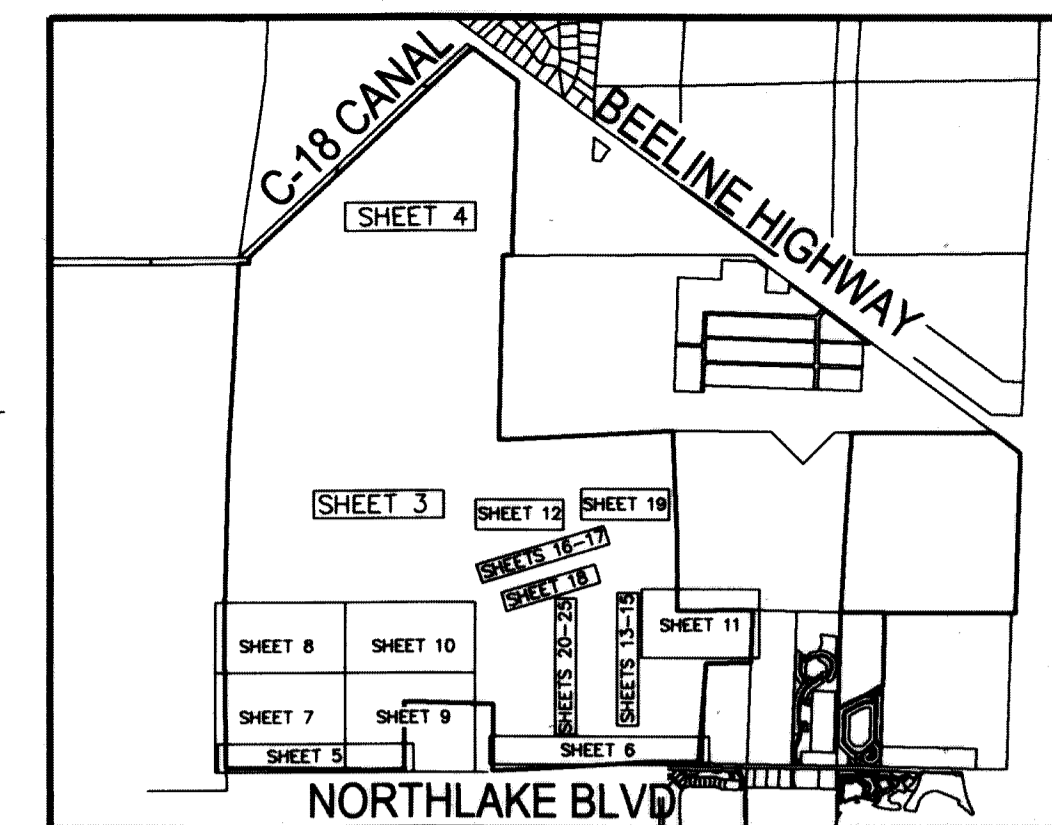
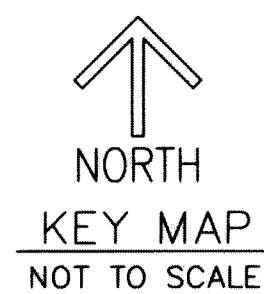


AVENIR

BEING A PORTION OF SECTIONS 28, 32, 33,
TOWNSHIP 41 SOUTH, RANGE 41 EAST,
TOGETHER WITH ALL OF SECTIONS 4, 9 AND 10,
TOWNSHIP 42 SOUTH, RANGE 41 EAST,
CITY OF PALM BEACH GARDENS, PALM BEACH COUNTY, FLORIDA

THIS INSTRUMENT PREPARED BY
RONNIE L. FURNISS
OF
CAULFIELD and WHEELER, INC.
SURVEYORS - ENGINEERS - PLANNERS
7900 GLADES ROAD, SUITE 100
BOCA RATON, FLORIDA 33434 - (561)392-1991
CERTIFICATE OF AUTHORIZATION NO. LB3591
NOVEMBER 2018



102

SHEET 18 OF 25

SHEETS 1-2 COVER
SHEETS 3-4 OVERALL SITE
SHEETS 5-6 DETAIL SOUTH BOUNDARY
SHEETS 7-10 DETAIL CONSERVATION AREAS
SHEET 11 DETAIL PARCEL E/G
PARK/CIVIC/RECREATION
SHEET 12 DETAIL CITY ANNEX TRACT
& PARCEL A-4
SHEETS 13-18 DETAIL TRACT R1
SHEET 19 DETAIL PARCEL C
SHEETS 20-25 DETAIL TRACTS R2 & R3

- LEGEND/ABBREVIATIONS**
- CL - CENTERLINE
 - Δ - DELTA (CENTRAL ANGLE)
 - AC - ACRES
 - AE - ACCESS EASEMENT
 - CB - CHORD BEARING
 - CD - CHORD DISTANCE
 - CD - COMMUNITY DEVELOPMENT DISTRICT
 - DE - DRAINAGE EASEMENT
 - DB - DEED BOOK
 - ESMT - EASEMENT
 - L - ARC LENGTH
 - RBE - ROADWAY BUFFER EASEMENTS
 - LB - LICENSED BUSINESS
 - MON - MONUMENT
 - PB - PLAT BOOK
 - PG - PAGE
 - O.R.B. - OFFICIAL RECORD BOOK
 - FND PBC - FOUND PALM BEACH COUNTY SURVEY MONUMENT
 - PBG - PALM BEACH GARDENS
 - R - RADIUS
 - RB - RADIAL BEARING
 - RW - RIGHT-OF-WAY
 - SF - SQUARE FEET
 - S.F.W.M.D. - SOUTH FLORIDA WATER MANAGEMENT DISTRICT
 - SR - STATE ROAD
 - SUAE - SEACOAST UTILITY AUTHORITY EASEMENT
 - UE - UTILITY EASEMENT
 - PRM - DENOTES PERMANENT REFERENCE MONUMENT
 - 5/8" IRON ROD WITH CAP STAMPED "C&W PRM LB3591"
 - - DENOTES PERMANENT CONTROL POINT

