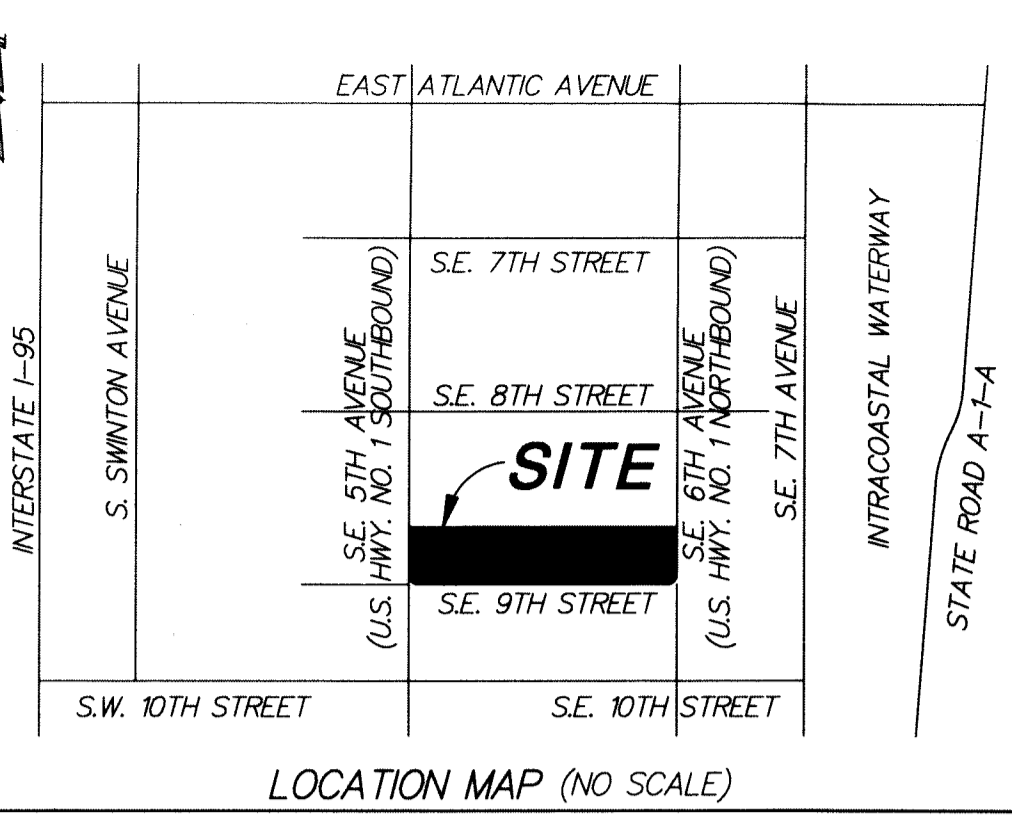


FIVE-55 DELRAY

BEING A REPLAT OF PARCEL A, REGIONS DELRAY, ACCORDING TO THE PLAT THEREOF AS RECORDED IN PLAT BOOK 112, PAGES 31-32 (P.R.P.B.CO.), BEING IN SECTION 21, TOWNSHIP 46 SOUTH, RANGE 43 EAST, CITY OF DELRAY BEACH, PALM BEACH COUNTY, FLORIDA

SHEET 2 OF 2

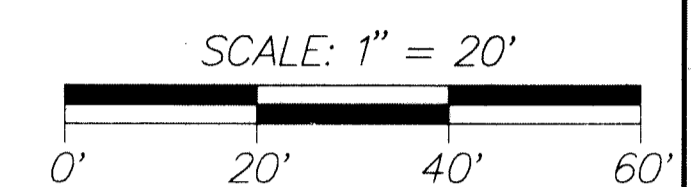
THIS INSTRUMENT WAS PREPARED BY PAUL D. ENGLE, IN THE OFFICE OF O'BRIEN, SUTER & O'BRIEN, INC., 955 N.W. 17TH AVENUE, SUITE K-1, DELRAY BEACH, FLORIDA 33445 (561) 276-4501



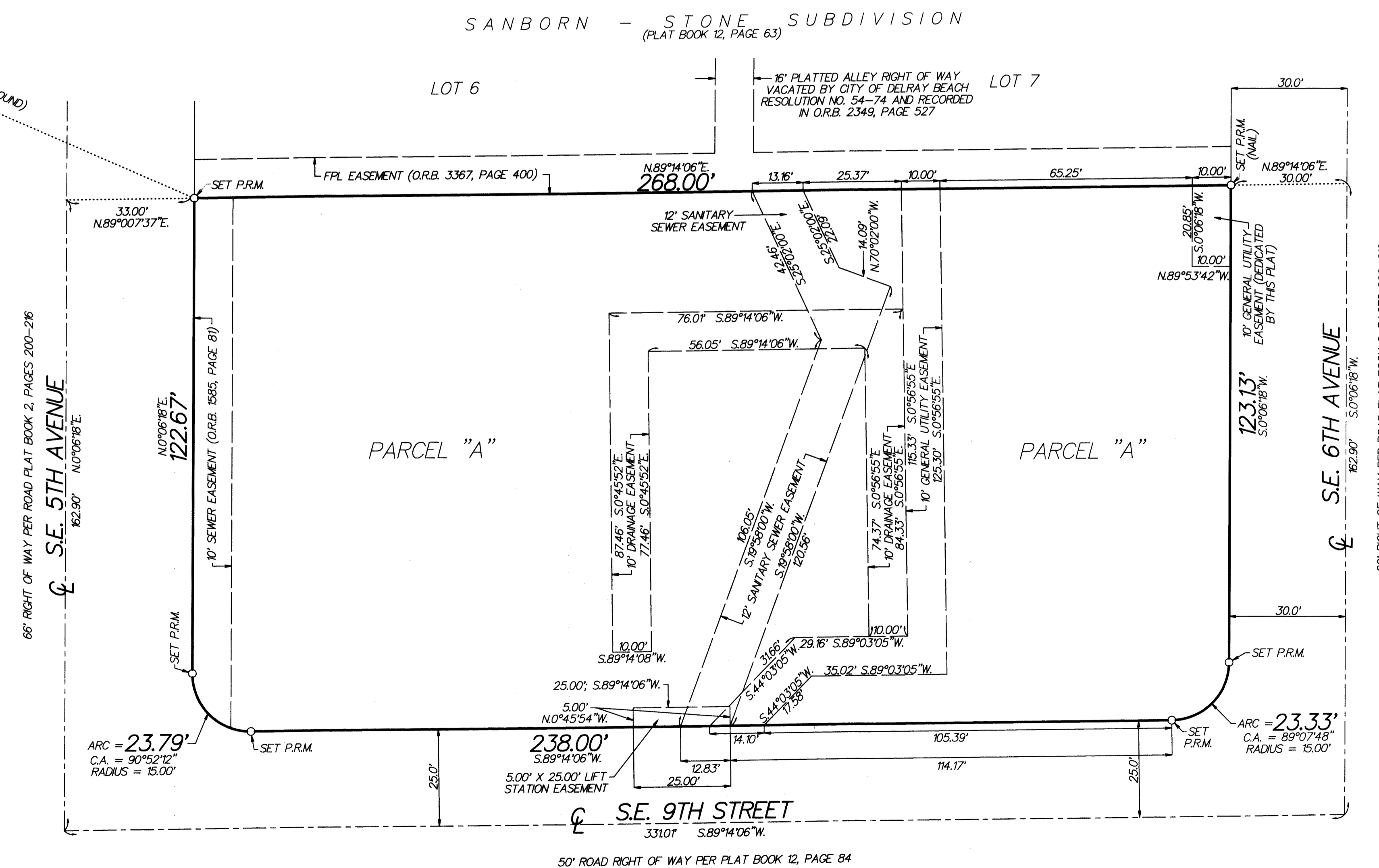
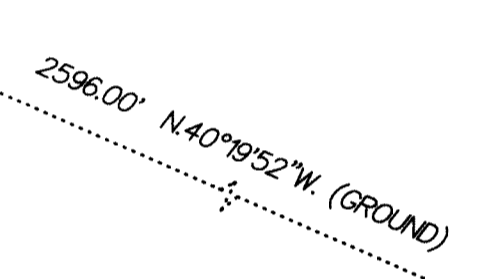
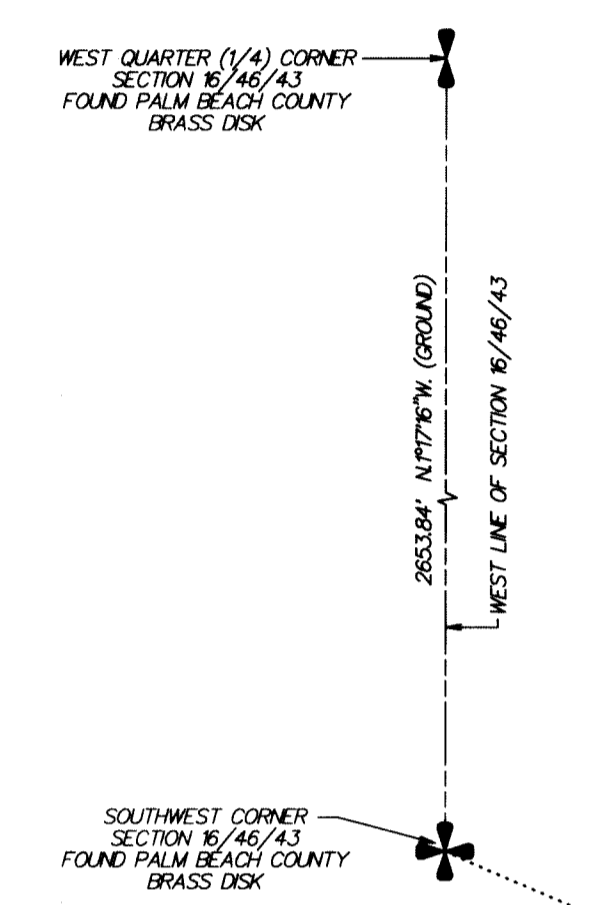
132

COUNTY OF PALM BEACH
STATE OF FLORIDA

THIS PLAT WAS FILED FOR RECORD AT _____
THIS _____ DAY OF _____
2017, AND DULY RECORDED IN PLAT BOOK NO. _____
ON PAGE _____
SHARON R. BOOK, CLERK AND COMPTROLLER
BY _____ DC.



- LEGEND:
- ☉ = CENTERLINE
 - FPL = FLORIDA POWER & LIGHT COMPANY
 - O.R.B. = OFFICIAL RECORDS BOOK
 - P.R.M. = PERMANENT REFERENCE MONUMENT (4"x4" CONCRETE MONUMENT STAMPED "PRM 353") UNLESS STATED OTHERWISE
 - P.R.P.B.CO. = PUBLIC RECORDS OF PALM BEACH COUNTY
 - SECTION 16/46/43 = SECTION 16, TOWNSHIP 46 SOUTH, RANGE 43 EAST



60' RIGHT OF WAY PER ROAD PLAT BOOK 2, PAGES 200-216

50' ROAD RIGHT OF WAY PER PLAT BOOK 12, PAGE 84