

THIS INSTRUMENT PREPARED BY
DAVID P. LINDLEY

CAULFIELD and WHEELER, INC.
SURVEYORS - ENGINEERS - PLANNERS
7900 GLADES ROAD, SUITE 100
BOCA RATON, FLORIDA 33434 - (561)392-1991

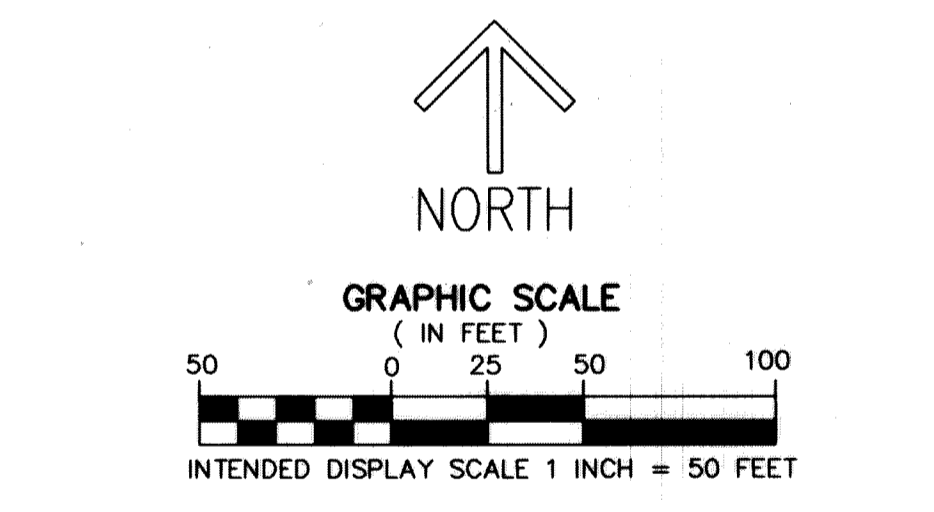
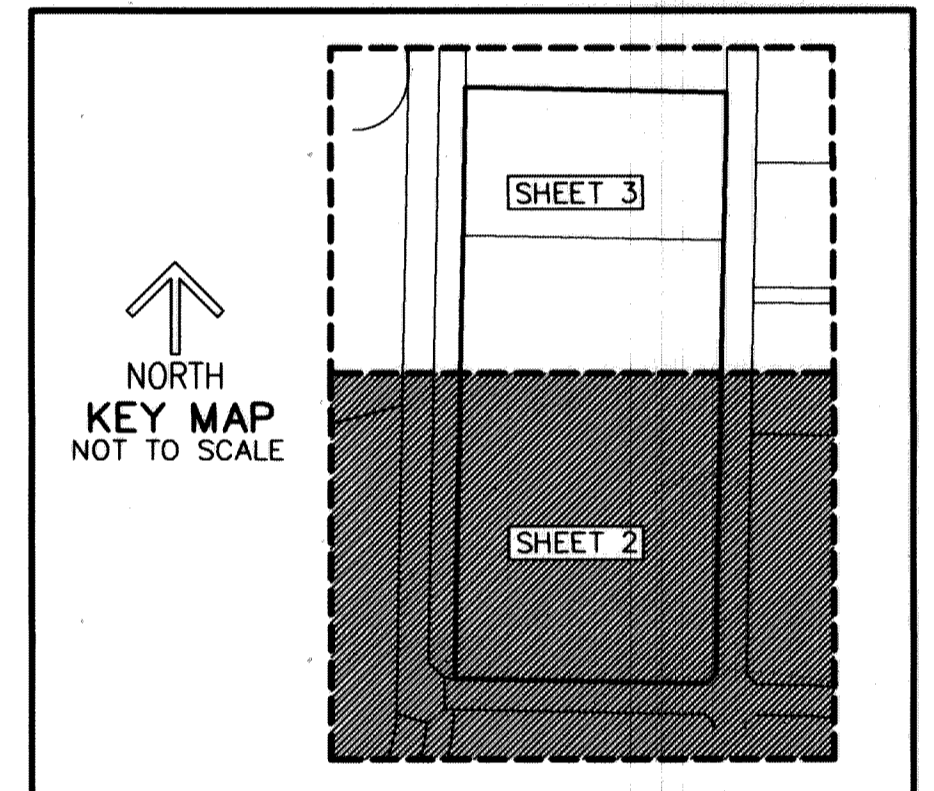
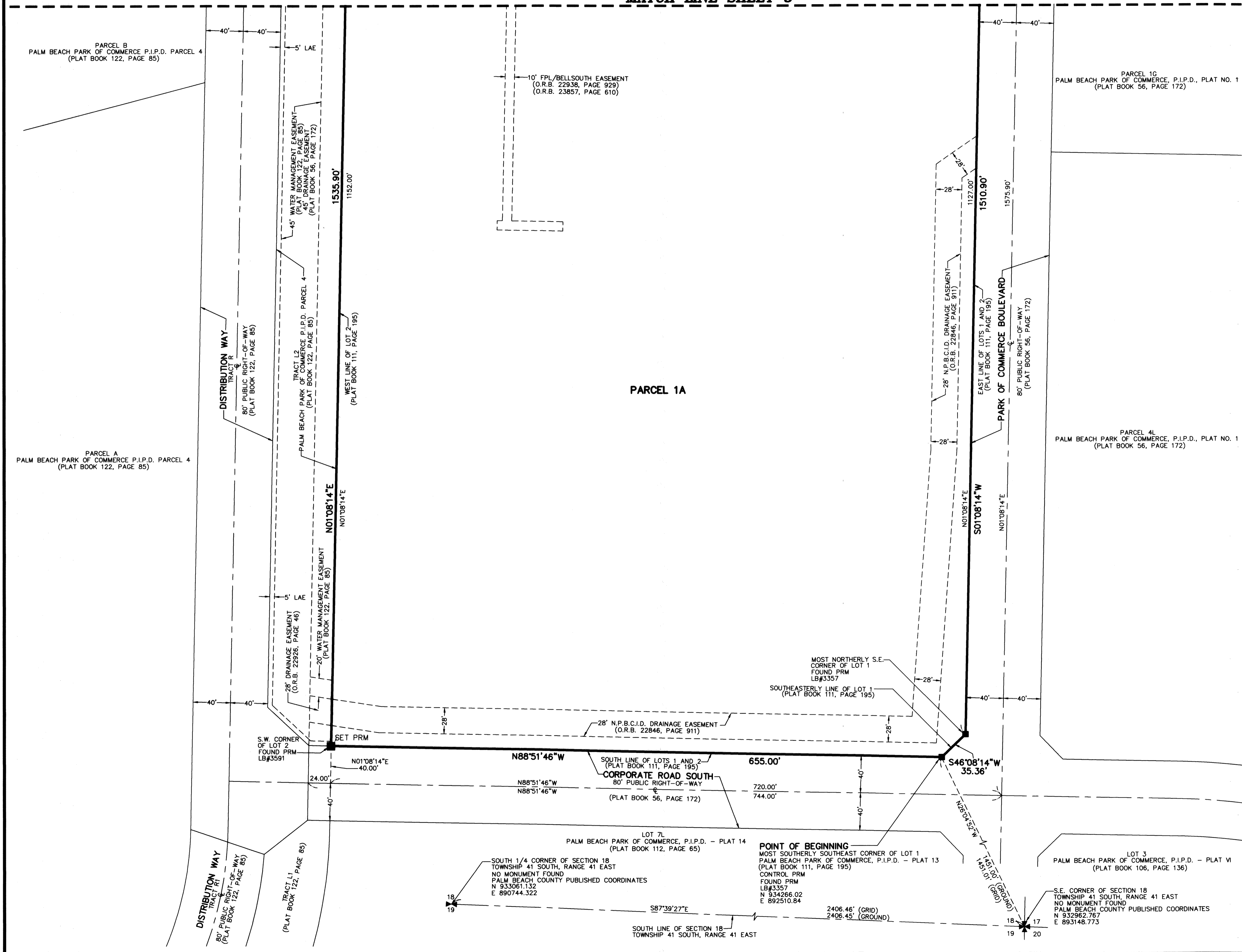
PALM BEACH PARK OF COMMERCE, P.I.P.D. - PLAT 13 REPLAT

BEING A REPLAT OF ALL OF LOTS 1 AND 2, PALM BEACH PARK OF COMMERCE, P.I.P.D. - PLAT 13,
ACCORDING TO THE PLAT THEREOF, AS RECORDED IN PLAT BOOK 111, PAGES 195 THROUGH 197 OF THE PUBLIC RECORDS OF PALM BEACH COUNTY, FLORIDA,
LYING IN SECTION 18, TOWNSHIP 41 SOUTH, RANGE 41 EAST, PALM BEACH COUNTY, FLORIDA

MATCH LINE SHEET 3

138

SHEET 2 OF 3



NOTES
COORDINATES, BEARINGS AND DISTANCES
COORDINATES SHOWN ARE GRID
DATUM = NAD 83 1990 ADJUSTMENT
ZONE = FLORIDA EAST
LINEAR UNIT = US SURVEY FEET
COORDINATE SYSTEM 1983 STATE PLANE
TRANSVERSE MERCATOR PROJECTION
ALL DISTANCES ARE GROUND, UNLESS OTHERWISE NOTED
SCALE FACTOR = 1.00005579
GROUND DISTANCE X SCALE FACTOR = GRID DISTANCE
BEARINGS AS SHOWN HEREON ARE GRID DATUM,
NAD 83 1990 ADJUSTMENT, FLORIDA EAST ZONE.

LEGEND / ABBREVIATIONS
C - CENTERLINE
E - EASTING
FPL - FLORIDA POWER & LIGHT CO.
LAE - LIMITED ACCESS EASEMENT
LB - LICENSED BUSINESS
N - NORTHING
O.R.B. - OFFICIAL RECORD BOOK
UE - UTILITY EASEMENT
N.P.B.C.I.D. - NORTHERN PALM BEACH COUNTY
IMPROVEMENT DISTRICT
P.I.P.D. - PLANNED INDUSTRIAL PARK DEVELOPMENT
S.B.T.&T. - SOUTHERN BELL TELEPHONE AND
TELEGRAPH COMPANY
PRM - INDICATES SET 4" X 4" X 24" CONCRETE PERMANENT
REFERENCE MONUMENT WITH ALUMINUM DISK
STAMPED "C&W PRM LB3591" UNLESS OTHERWISE NOTED.