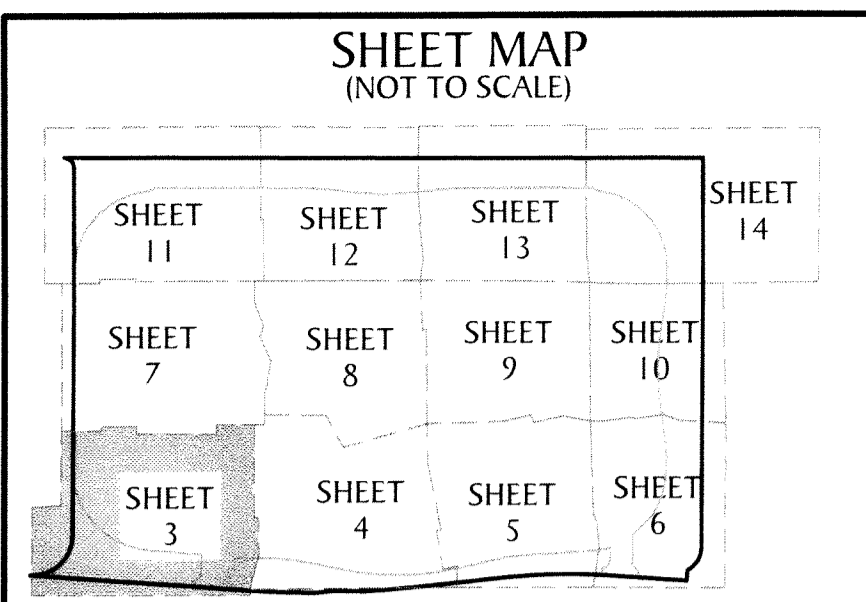
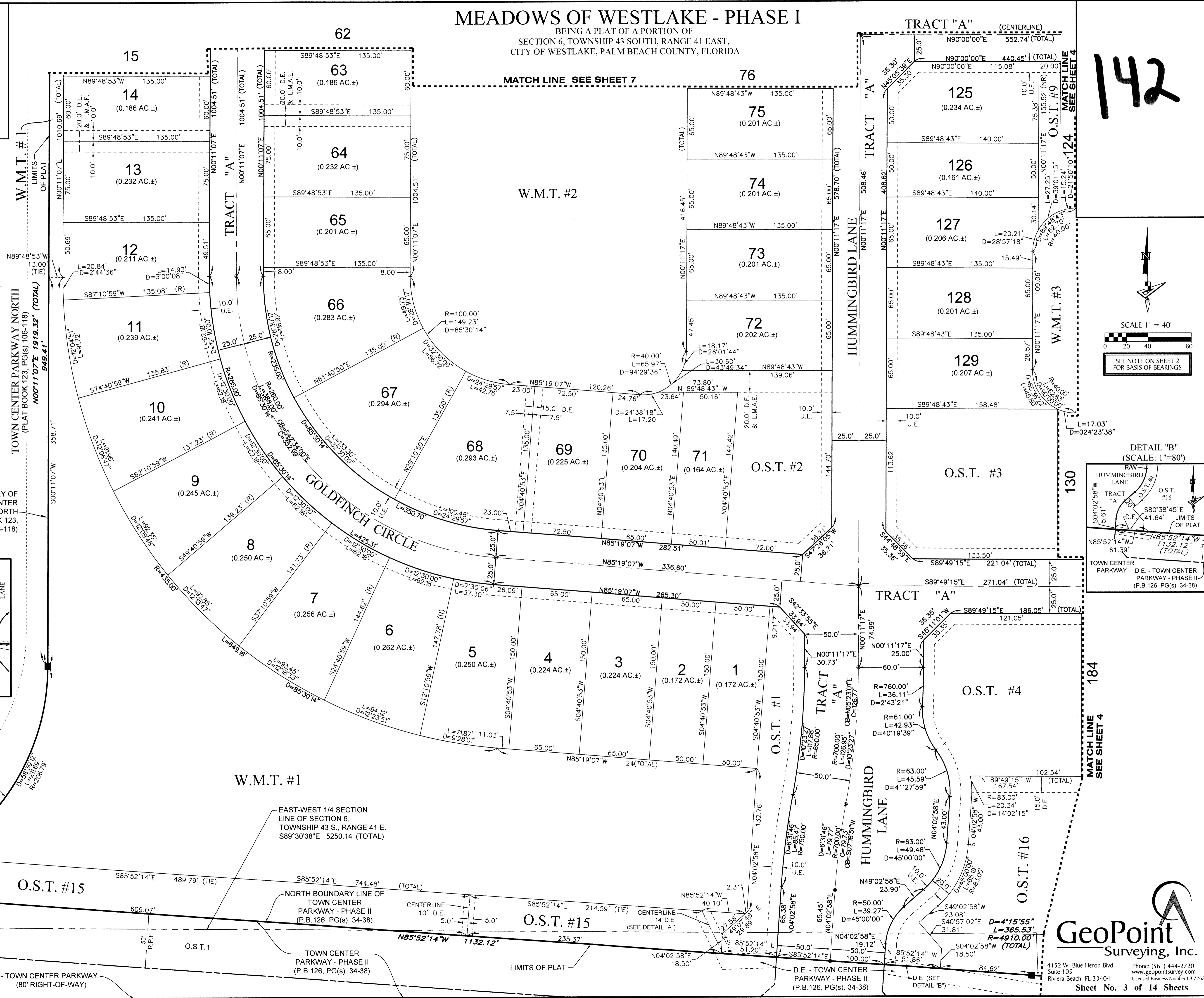
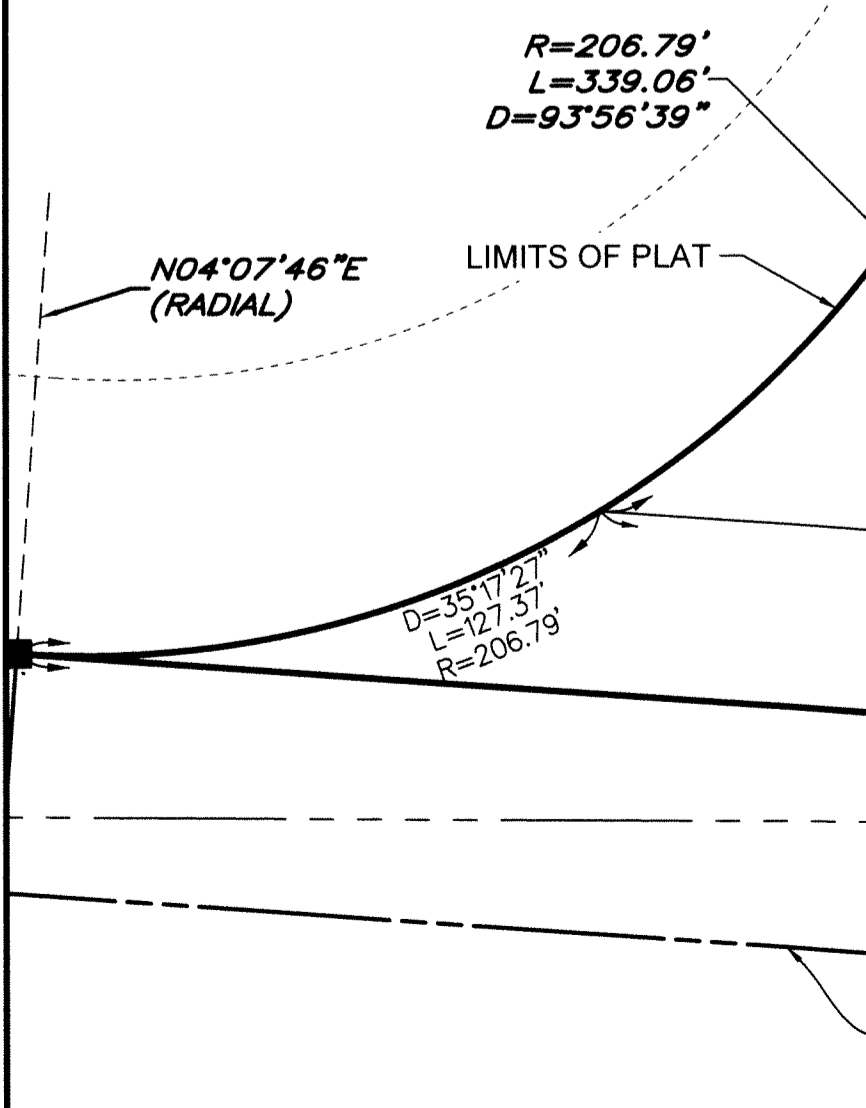
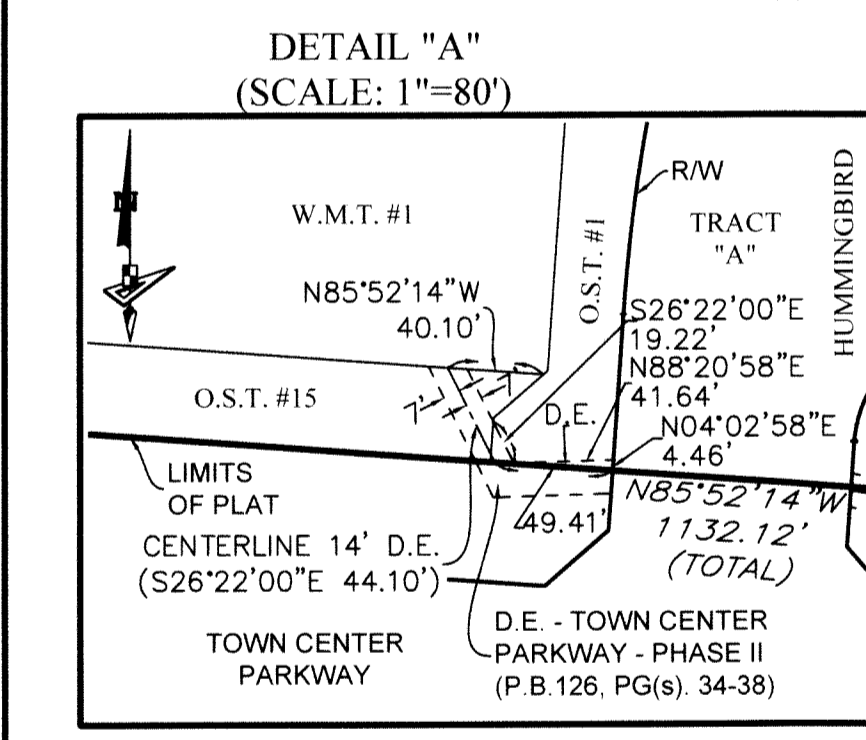


MEADOWS OF WESTLAKE - PHASE I

BEING A PLAT OF A PORTION OF
SECTION 6, TOWNSHIP 43 SOUTH, RANGE 41 EAST,
CITY OF WESTLAKE, PALM BEACH COUNTY, FLORIDA



- LEGEND**
- P.B. --- PLAT BOOK
 - D.B. --- DEED BOOK
 - PG./PG(S) --- PAGE(S)
 - W.M.T. --- WATER MANAGEMENT TRACT
 - O.S.T. --- OPEN SPACE TRACT
 - R.P.E. --- RURAL PARKWAY EASEMENT
 - P.B.C. --- PALM BEACH COUNTY
 - U.E. --- UTILITY EASEMENT
 - D.E. --- DRAINAGE EASEMENT
 - L.M.E. --- LAKE MAINTENANCE EASEMENT
 - L.M.A.E. --- LAKE MAINTENANCE ACCESS EASEMENT
 - R --- RADIUS
 - L --- ARCH LENGTH
 - D --- DELTA ANGLE
 - CB --- CHORD BEARING
 - C --- CHORD
 - 6-43-41 --- SECTION-TOWNSHIP-RANGE
 - --- FOUND PERMANENT REFERENCE MONUMENT
 - --- SET PERMANENT REFERENCE MONUMENT
 - --- PERMANENT CONTROL POINT
 - P.C. --- POINT OF CURVATURE
 - P.T. --- POINT OF TANGENCY
 - R/W --- RIGHT-OF-WAY



142

