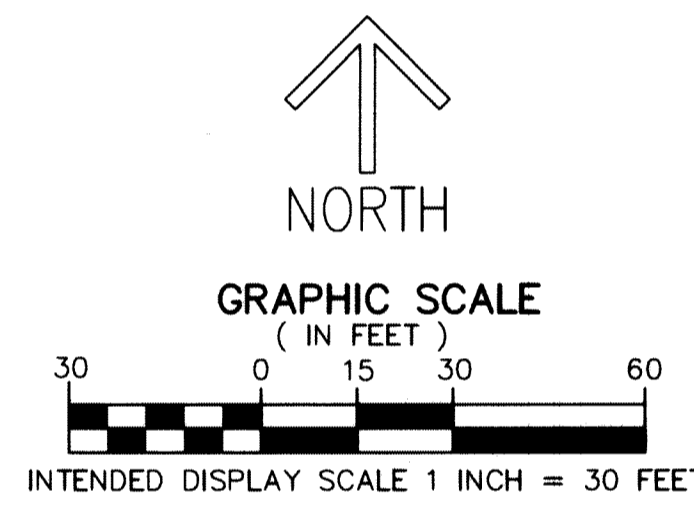
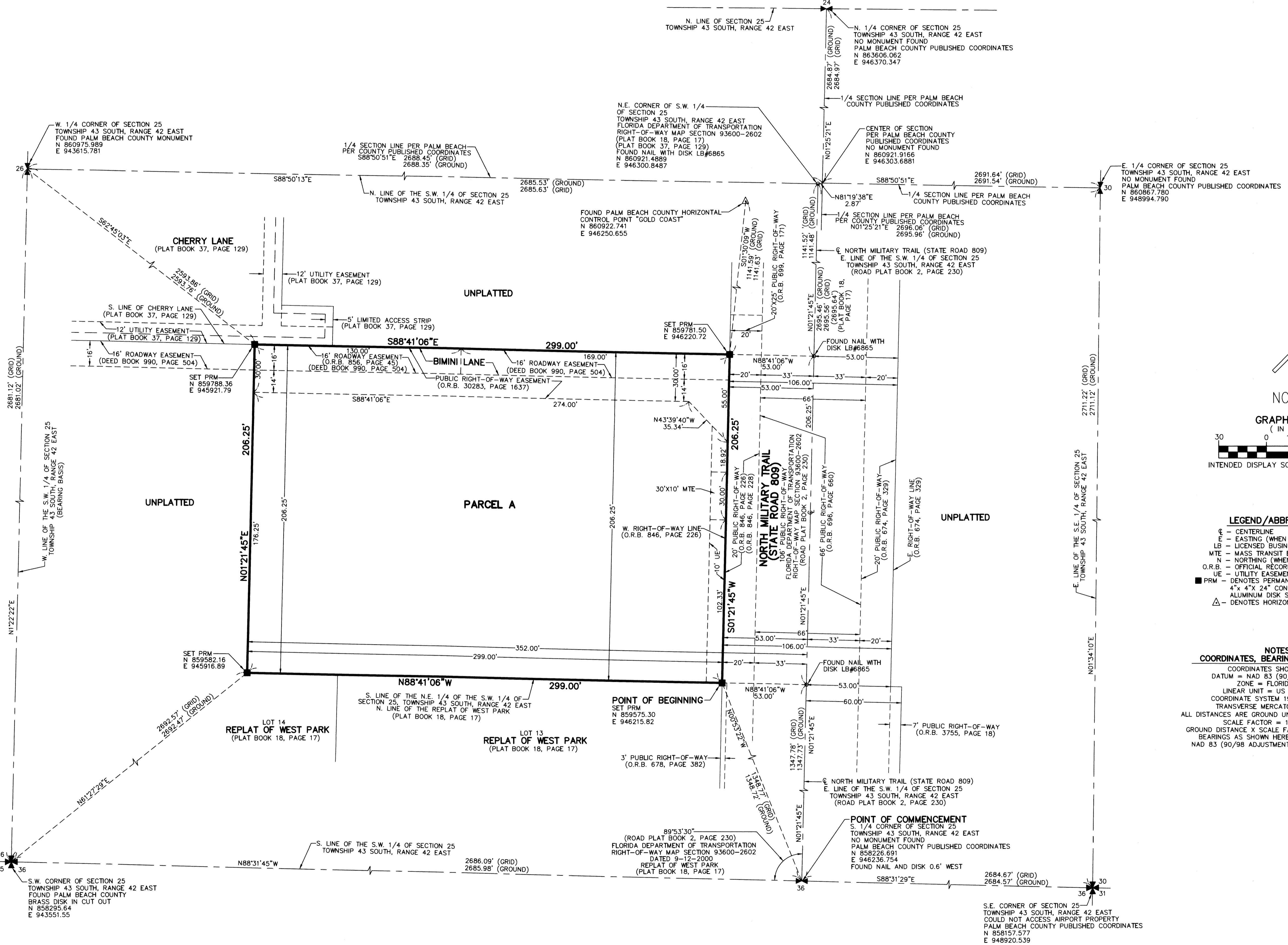


THIS INSTRUMENT PREPARED BY  
DAVID P. LINDLEY  
OF  
**CAULFIELD and WHEELER, INC.**  
SURVEYORS - ENGINEERS - PLANNERS  
7900 GLADES ROAD, SUITE 100  
BOCA RATON, FLORIDA 33434 - (561)392-1991  
CERTIFICATE OF AUTHORIZATION NO. LB3591

# MOTOWASH EXPRESS CARWASH

BEING A PORTION OF THE NORTHEAST ONE-QUARTER OF THE SOUTHWEST ONE-QUARTER  
OF SECTION 25, TOWNSHIP 43 SOUTH, RANGE 42 EAST, PALM BEACH COUNTY, FLORIDA



- LEGEND/ABBREVIATIONS**
- ☉ - CENTERLINE
  - E - EASTING (WHEN USED WITH COORDINATES)
  - LB - LICENSED BUSINESS
  - MTE - MASS TRANSIT EASEMENT
  - N - NORTHING (WHEN USED WITH COORDINATES)
  - O.R.B. - OFFICIAL RECORD BOOK
  - UE - UTILITY EASEMENT
  - PRM - DENOTES PERMANENT REFERENCE MONUMENT
  - 4" x 4" x 24" CONCRETE MONUMENT WITH ALUMINUM DISK STAMPED "C&W PRM LB3591"
  - △ - DENOTES HORIZONTAL CONTROL POINT

- NOTES**  
**COORDINATES, BEARINGS AND DISTANCES**
- COORDINATES SHOWN ARE GRID
  - DATUM = NAD 83 (90/98 ADJUSTMENT)
  - ZONE = FLORIDA EAST
  - LINEAR UNIT = US SURVEY FEET
  - COORDINATE SYSTEM 1983 STATE PLANE
  - TRANSVERSE MERCATOR PROJECTION
  - ALL DISTANCES ARE GROUND UNLESS OTHERWISE NOTED
  - SCALE FACTOR = 1.00037647
  - GROUND DISTANCE X SCALE FACTOR = GRID DISTANCE
  - BEARINGS AS SHOWN HEREON ARE GRID DATUM, NAD 83 (90/98 ADJUSTMENT), FLORIDA EAST ZONE.

S.E. CORNER OF SECTION 25  
TOWNSHIP 43 SOUTH, RANGE 42 EAST  
COULD NOT ACCESS AIRPORT PROPERTY  
PALM BEACH COUNTY PUBLISHED COORDINATES  
N 858157.577  
E 948920.539