

THIS INSTRUMENT PREPARED BY  
DAVID P. LINDLEY  
OF

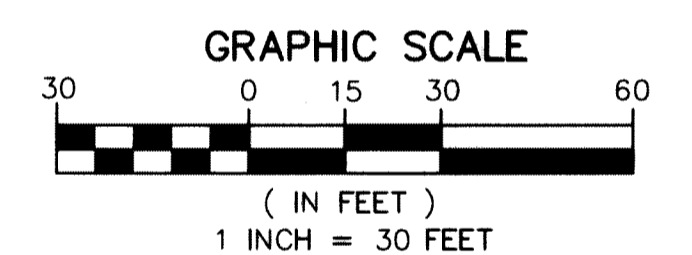
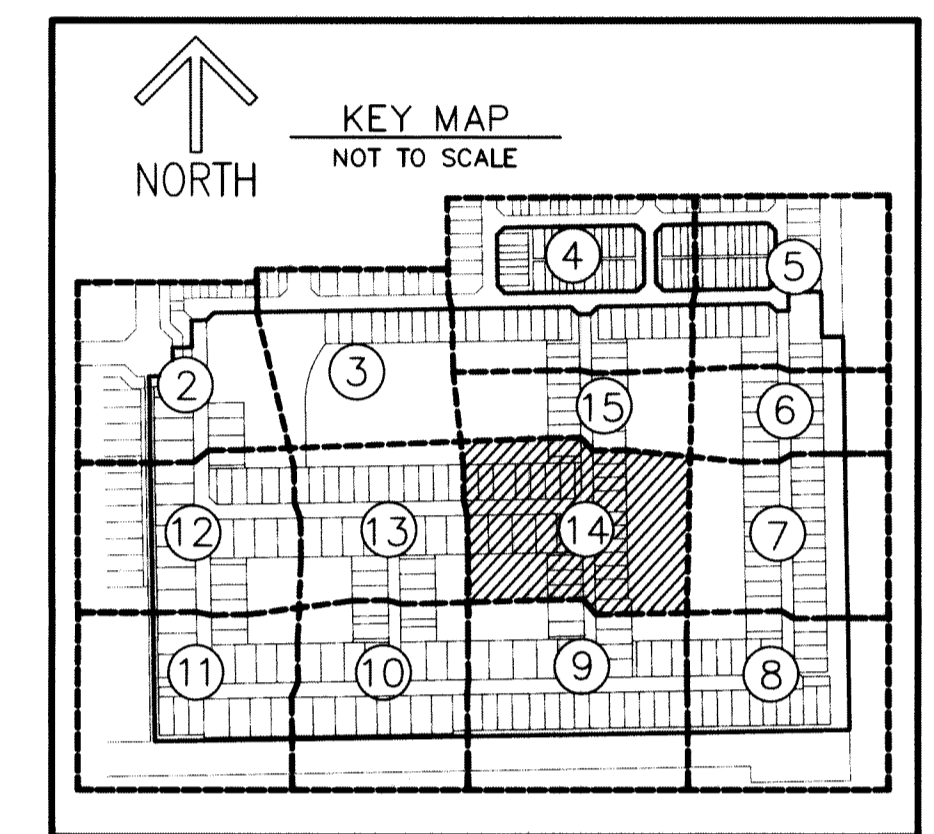
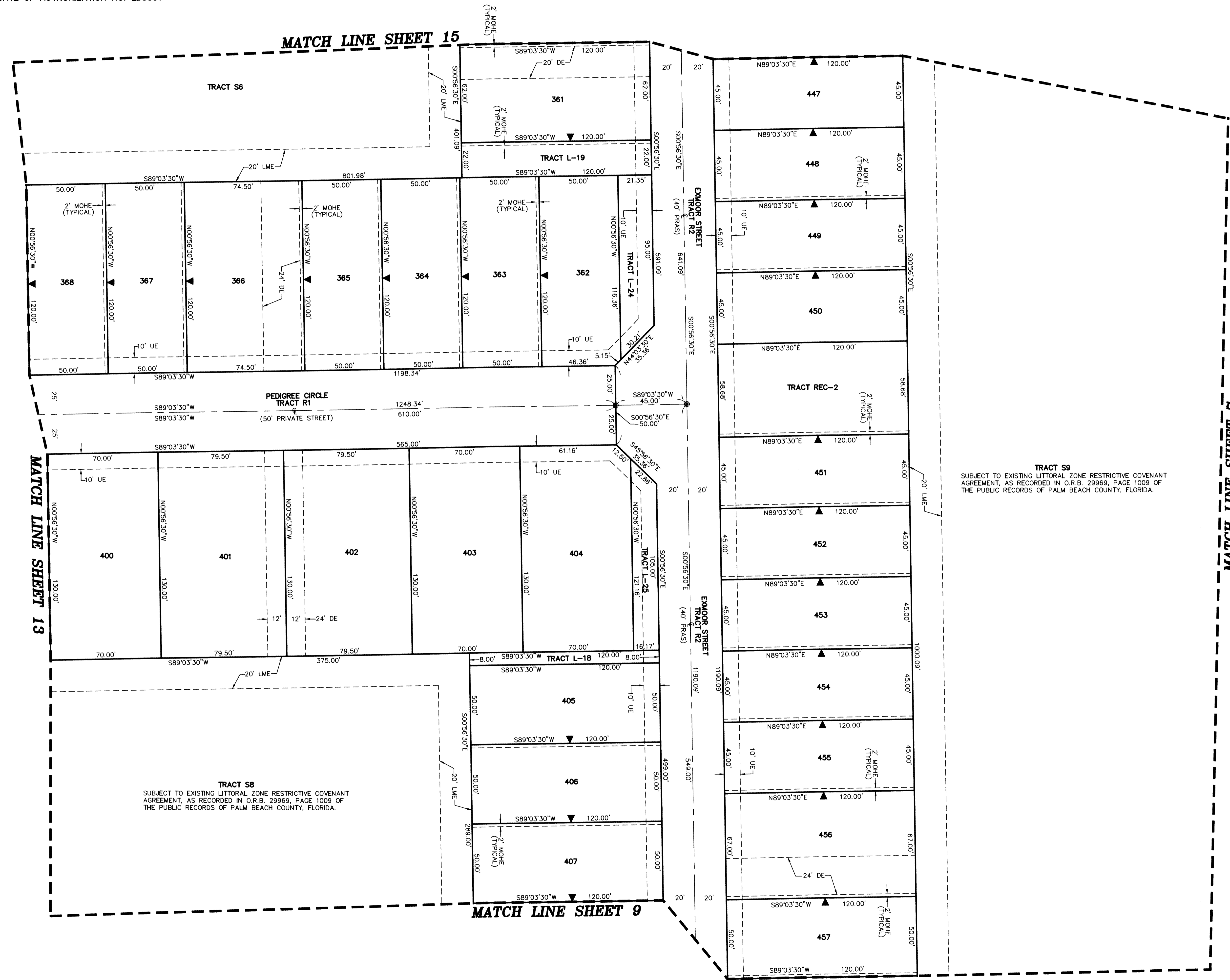
**CAULFIELD and WHEELER, INC.**  
SURVEYORS - ENGINEERS - PLANNERS  
7900 GLADES ROAD, SUITE 100  
BOCA RATON, FLORIDA 33434 - (561)392-1991  
CERTIFICATE OF AUTHORIZATION NO. LB3591

# FIELDS AT GULFSTREAM POLO PUD - PLAT THREE

A PLANNED UNIT DEVELOPMENT  
BEING A REPLAT OF TRACTS F, G, H AND J, FIELDS AT GULFSTREAM POLO PUD - PLAT TWO, AS RECORDED IN PLAT BOOK 125, PAGES 130 THROUGH 137 AND A PORTION OF BLOCK 28, PALM BEACH FARMS CO. PLAT NO. 3, ACCORDING TO THE PLAT THEREOF, AS RECORDED IN PLAT BOOK 2, PAGE 45 THROUGH 54 ALL OF THE PUBLIC RECORDS OF PALM BEACH COUNTY, FLORIDA, LYING IN SECTIONS 29 AND 32, TOWNSHIP 44 SOUTH, RANGE 42 EAST, PALM BEACH COUNTY, FLORIDA

175

SHEET 14 OF 15



**NOTES COORDINATES, BEARINGS AND DISTANCES**  
COORDINATES SHOWN ARE GRID  
DATUM = NAD 83 (90/98 ADJUSTMENT)  
ZONE = FLORIDA EAST  
LINEAR UNIT = US SURVEY FEET  
COORDINATE SYSTEM 1983 STATE PLANE  
TRANSVERSE MERCATOR PROJECTION  
ALL DISTANCES ARE GROUND, UNLESS OTHERWISE NOTED  
SCALE FACTOR = 1.0000236  
GROUND DISTANCE X SCALE FACTOR = GRID DISTANCE  
BEARINGS AS SHOWN HEREON ARE GRID DATUM  
NAD 83 (90/98 ADJUSTMENT), FLORIDA EAST ZONE.

**LEGEND/ABBREVIATIONS**  
 CL - CENTERLINE  
 Δ - DELTA (CENTRAL ANGLE)  
 (C) - CALCULATED  
 CB - CHORD BEARING  
 CD - CHORD DISTANCE  
 DE - DRAINAGE EASEMENT  
 E - EASTING (WHEN USED WITH COORDINATES)  
 L - ARC LENGTH  
 LAE - LIMITED ACCESS EASEMENT  
 LB - LICENSED BUSINESS  
 LMAE - LAKE MAINTENANCE ACCESS EASEMENT  
 LME - LAKE MAINTENANCE EASEMENT  
 LSE - LIFT STATION EASEMENT  
 L.W.D.D. - LAKE WORTH DRAINAGE DISTRICT  
 N - NOTHING (WHEN USED WITH COORDINATES)  
 MOHE - MAINTENANCE AND OVERHANG EASEMENT  
 O.R.B. - OFFICIAL RECORD BOOK  
 PRAS - PRIVATE RESIDENTIAL ACCESS STREET  
 PBCUE - PALM BEACH COUNTY UTILITY EASEMENT  
 R - RADIUS  
 UE - UTILITY EASEMENT  
 SWE - SIDEWALK EASEMENT  
 (P) - PALM BEACH FARMS CO. PLAT NO. 3 (PLAT BOOK 2, PAGES 45-54)  
 (P1) - FIELDS AT GULFSTREAM POLO PUD - PLAT ONE (PLAT BOOK 123, PAGES 80-95)  
 (P2) - FIELDS AT GULFSTREAM POLO PUD - PLAT TWO (PLAT BOOK 125, PAGES 130-137)  
 ▲ - INDICATES "ZERO" SIDE OF LOT LINE  
 ■ PRM - DENOTES PERMANENT REFERENCE MONUMENT 4"x 4"x 24" CONCRETE MONUMENT WITH ALUMINUM DISK STAMPED "C&W PRM LB3591"  
 ● PCP - DENOTES PERMANENT CONTROL POINT NAIL AND METAL DISK STAMPED "PCP LB3591"

TRACT S8  
SUBJECT TO EXISTING LITTORAL ZONE RESTRICTIVE COVENANT AGREEMENT, AS RECORDED IN O.R.B. 29969, PAGE 1009 OF THE PUBLIC RECORDS OF PALM BEACH COUNTY, FLORIDA.

TRACT S9  
SUBJECT TO EXISTING LITTORAL ZONE RESTRICTIVE COVENANT AGREEMENT, AS RECORDED IN O.R.B. 29969, PAGE 1009 OF THE PUBLIC RECORDS OF PALM BEACH COUNTY, FLORIDA.