

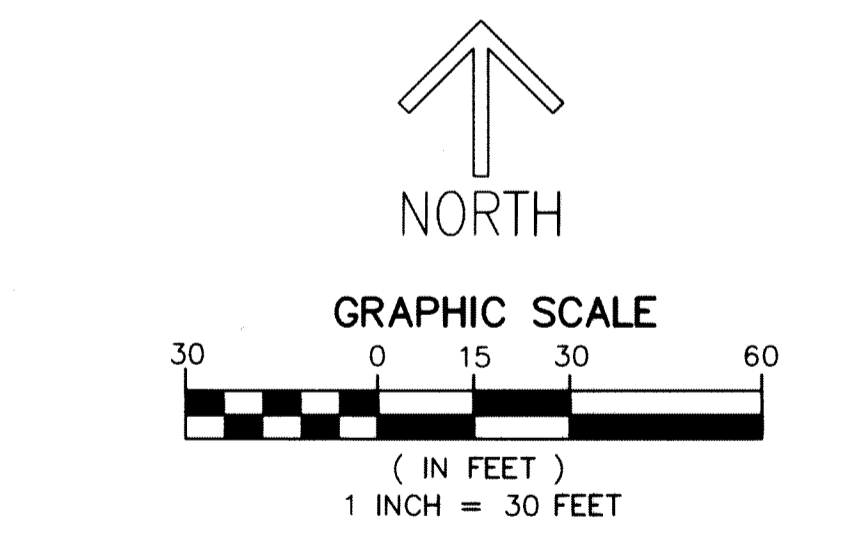
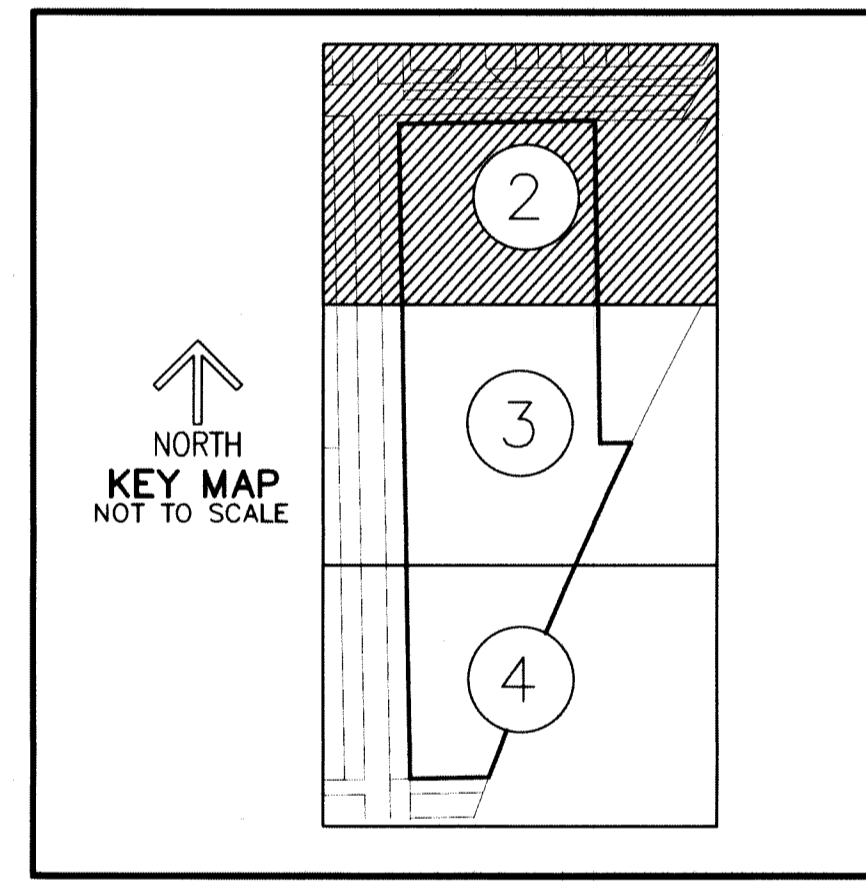
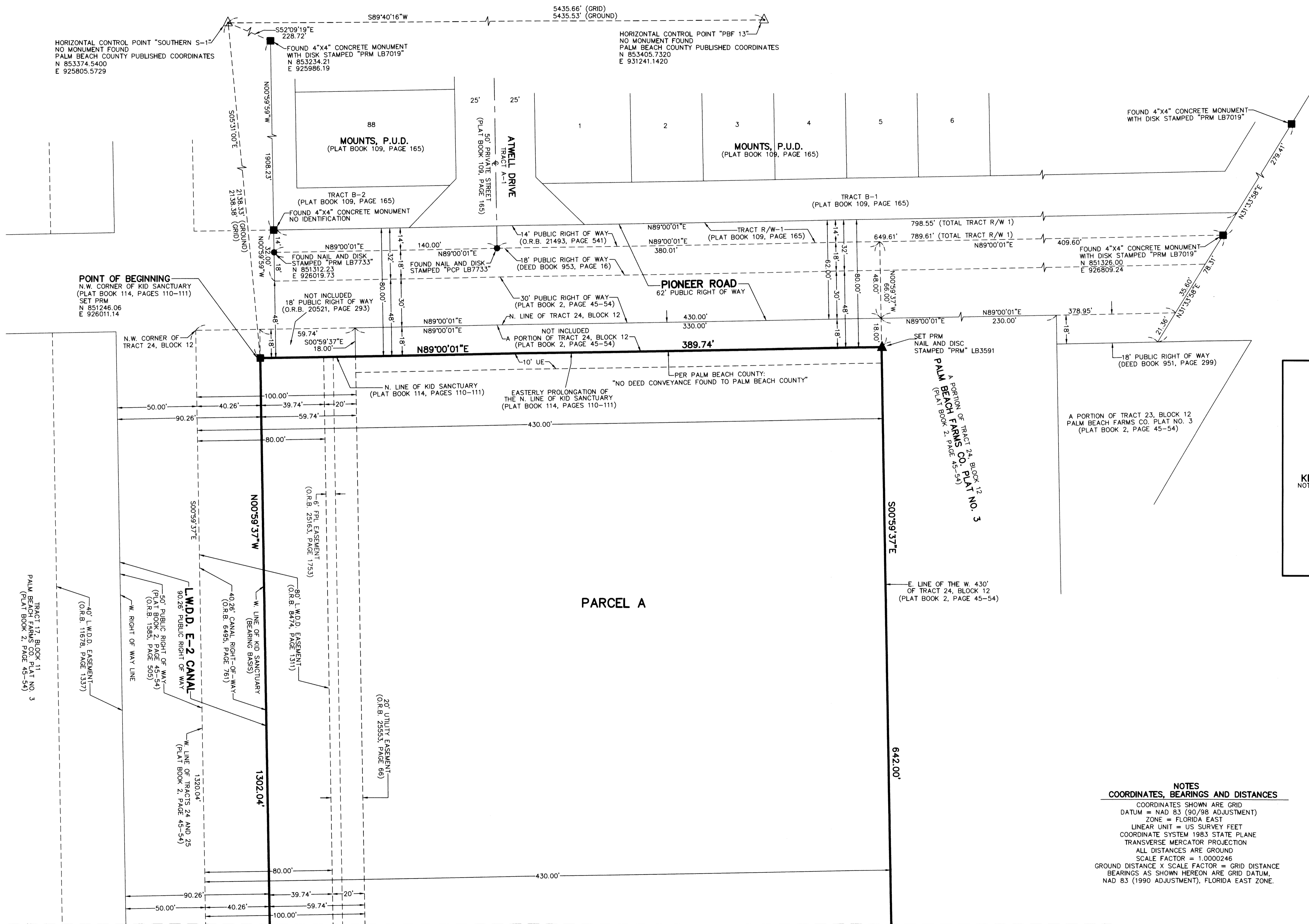
THIS INSTRUMENT PREPARED BY
 DAVID P. LINDLEY
 OF
CAULFIELD and WHEELER, INC.
 SURVEYORS — ENGINEERS — PLANNERS
 7900 GLADES ROAD, SUITE 100
 BOCA RATON, FLORIDA 33434 — (561)392-1991
 CERTIFICATE OF AUTHORIZATION NO. LB3591

KID SANCTUARY PLAT TWO

BEING A REPLAT OF ALL OF KID SANCTUARY, AS RECORDED IN PLAT BOOK 114, PAGES 110 AND 111,
 TOGETHER WITH
 A PORTION OF TRACT 24, BLOCK 12, THE PALM BEACH FARMS COMPANY PLAT NO. 3,
 AS RECORDED IN PLAT BOOK 2, PAGES 45 THROUGH 54,
 BOTH OF THE PUBLIC RECORDS OF PALM BEACH COUNTY, FLORIDA
 LYING IN SECTION 5, TOWNSHIP 44 SOUTH, RANGE 42 EAST,
 PALM BEACH COUNTY, FLORIDA

189

SHEET 2 OF 4



NOTES
COORDINATES, BEARINGS AND DISTANCES

COORDINATES SHOWN ARE GRID
 DATUM = NAD 83 (90/98 ADJUSTMENT)
 ZONE = FLORIDA EAST
 LINEAR UNIT = US SURVEY FEET
 COORDINATE SYSTEM 1983 STATE PLANE
 TRANSVERSE MERCATOR PROJECTION
 ALL DISTANCES ARE GROUND
 SCALE FACTOR = 1.0000246
 GROUND DISTANCE X SCALE FACTOR = GRID DISTANCE
 BEARINGS AS SHOWN HEREON ARE GRID DATUM,
 NAD 83 (1990 ADJUSTMENT), FLORIDA EAST ZONE.

LEGEND/ABBREVIATIONS

- CL — CENTERLINE
- Δ — DELTA (CENTRAL ANGLE)
- CB — CHORD BEARING
- CD — CHORD DISTANCE
- E — EASTING (WHEN USED WITH COORDINATES)
- FPL — FLORIDA POWER & LIGHT COMPANY
- L — ARC LENGTH
- LB — LICENSED BUSINESS
- L.W.D. — LAKE WORTH DRAINAGE DISTRICT
- N — NORTHING (WHEN USED WITH COORDINATES)
- O.R.B. — OFFICIAL RECORD BOOK
- PCP — PERMANENT CONTROL POINT
- PNT — POINT OF NON-TANGENCY
- R — RADIUS
- UE — UTILITY EASEMENT
- PRM — DENOTES PERMANENT REFERENCE MONUMENT
- ▲ — DENOTES PERMANENT REFERENCE MONUMENT

4" x 4" 24" CONCRETE MONUMENT WITH ALUMINUM DISK STAMPED "C&W PRM LB3591" UNLESS OTHERWISE NOTED

▲ — DENOTES PERMANENT REFERENCE MONUMENT NAIL AND DISC STAMPED "PRM" LB 3591

MATCH LINE SHEET 3