

THIS INSTRUMENT PREPARED BY  
DAVID P. LINDLEY  
OF  
**CAULFIELD and WHEELER, INC.**  
SURVEYORS — ENGINEERS — PLANNERS  
7900 GLADES ROAD, SUITE 100  
BOCA RATON, FLORIDA 33434 — (561)392-1991  
CERTIFICATE OF AUTHORIZATION NO. LB3591

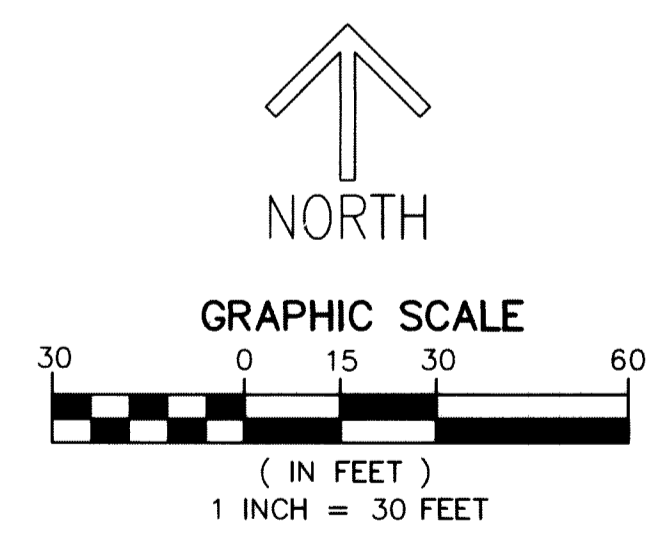
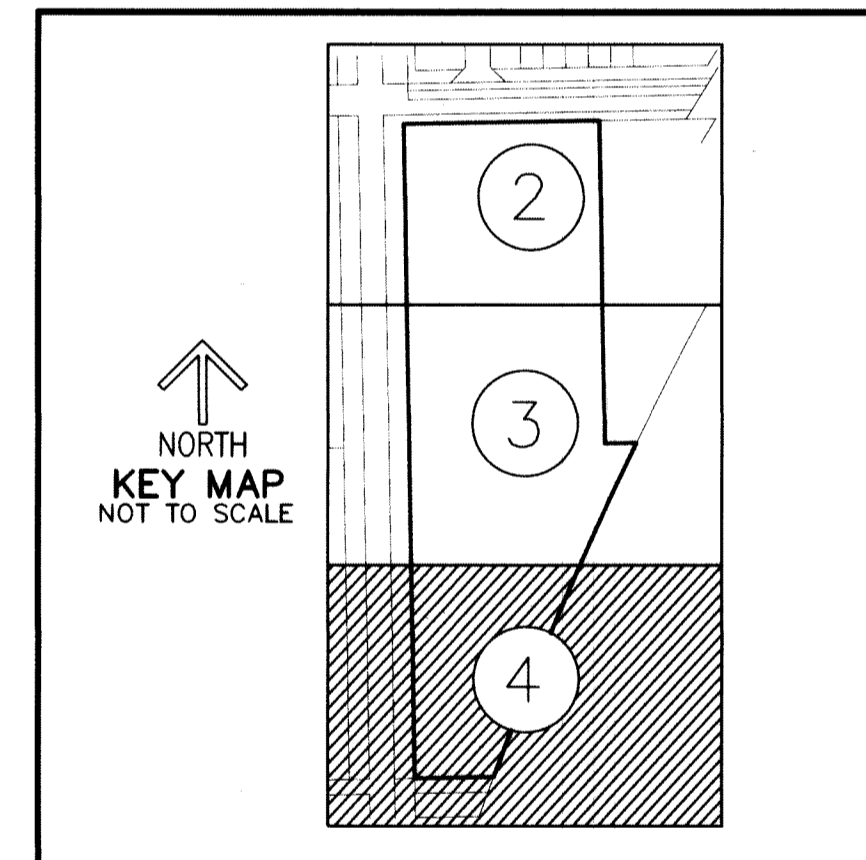
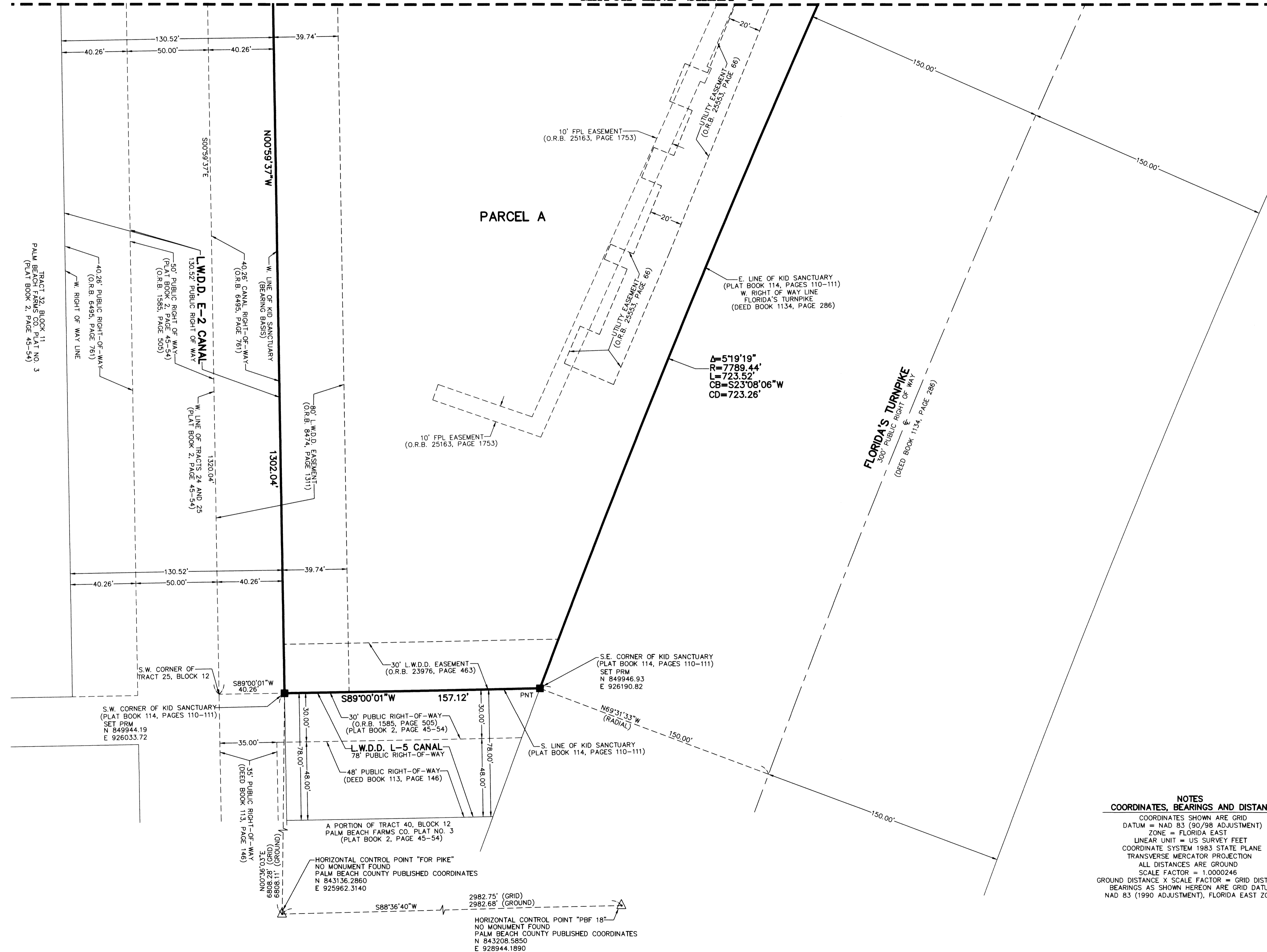
# KID SANCTUARY PLAT TWO

BEING A REPLAT OF ALL OF KID SANCTUARY, AS RECORDED IN PLAT BOOK 114, PAGES 110 AND 111,  
TOGETHER WITH  
A PORTION OF TRACT 24, BLOCK 12, THE PALM BEACH FARMS COMPANY PLAT NO. 3,  
AS RECORDED IN PLAT BOOK 2, PAGES 45 THROUGH 54,  
BOTH OF THE PUBLIC RECORDS OF PALM BEACH COUNTY, FLORIDA  
LYING IN SECTION 5, TOWNSHIP 44 SOUTH, RANGE 42 EAST,  
PALM BEACH COUNTY, FLORIDA

191

SHEET 4 OF 4

### MATCH LINE SHEET 3



- NOTES**  
**COORDINATES, BEARINGS AND DISTANCES**  
COORDINATES SHOWN ARE GRID  
DATUM = NAD 83 (90/98 ADJUSTMENT)  
ZONE = FLORIDA EAST  
LINEAR UNIT = US SURVEY FEET  
COORDINATE SYSTEM 1983 STATE PLANE  
TRANSVERSE MERCATOR PROJECTION  
ALL DISTANCES ARE GROUND  
SCALE FACTOR = 1.0000246  
GROUND DISTANCE X SCALE FACTOR = GRID DISTANCE  
BEARINGS AS SHOWN HEREON ARE GRID DATUM,  
NAD 83 (1990 ADJUSTMENT), FLORIDA EAST ZONE.
- LEGEND/ABBREVIATIONS**  
C — CENTERLINE  
Δ — DELTA (CENTRAL ANGLE)  
CB — CHORD BEARING  
CD — CHORD DISTANCE  
E — EASTING (WHEN USED WITH COORDINATES)  
FPL — FLORIDA POWER & LIGHT COMPANY  
L — ARC LENGTH  
LB — LICENSED BUSINESS  
L.W.D. — LAKE WORTH DRAINAGE DISTRICT  
N — NORTHING (WHEN USED WITH COORDINATES)  
O.R.B. — OFFICIAL RECORD BOOK  
PCP — PERMANENT CONTROL POINT  
PNT — POINT OF NON-TANGENCY  
R — RADIUS  
UE — UTILITY EASEMENT  
■ PRM — DENOTES PERMANENT REFERENCE MONUMENT  
4" x 4" x 24" CONCRETE MONUMENT WITH  
ALUMINUM DISK STAMPED "C&W PRM LB3591"  
UNLESS OTHERWISE NOTED  
▲ — DENOTES PERMANENT REFERENCE MONUMENT  
NAIL AND DISC STAMPED "PRM" LB 3591