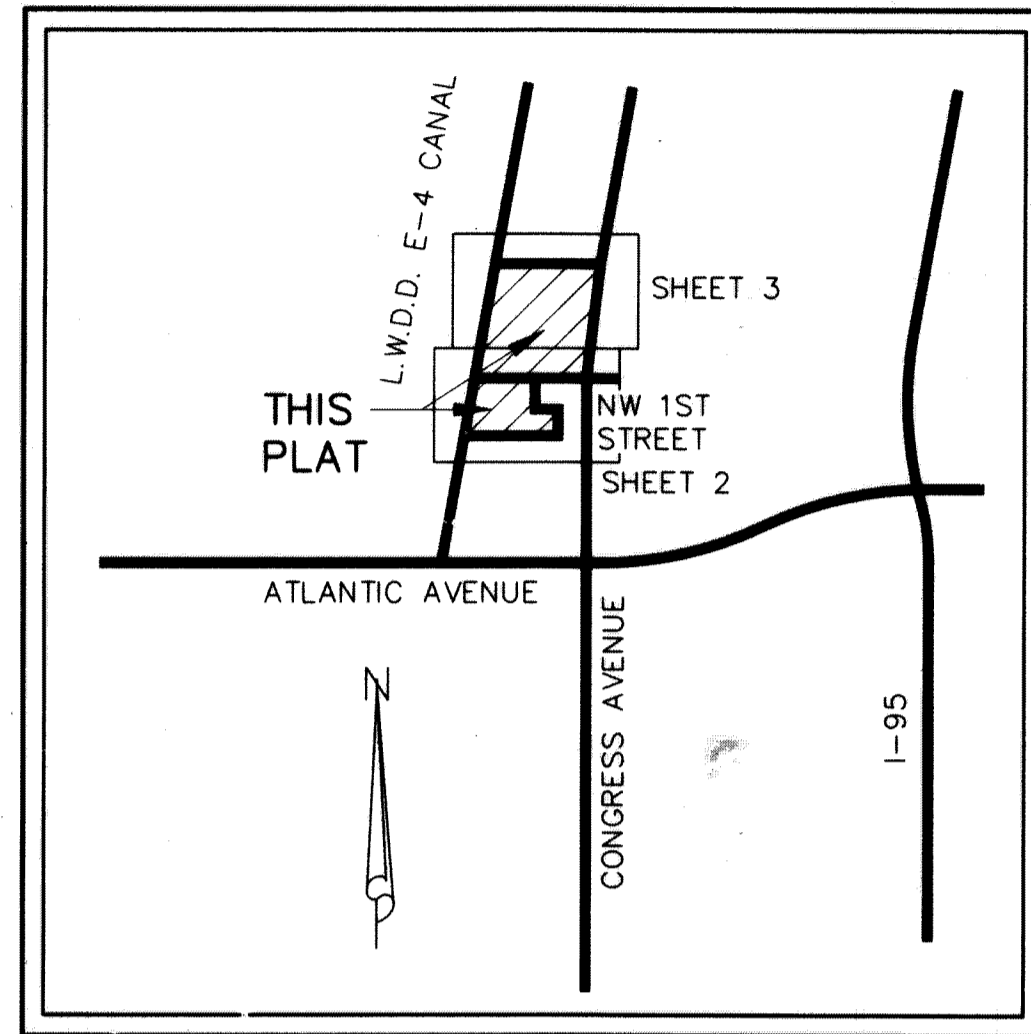


# PALM TRAN SOUTH COUNTY FACILITY

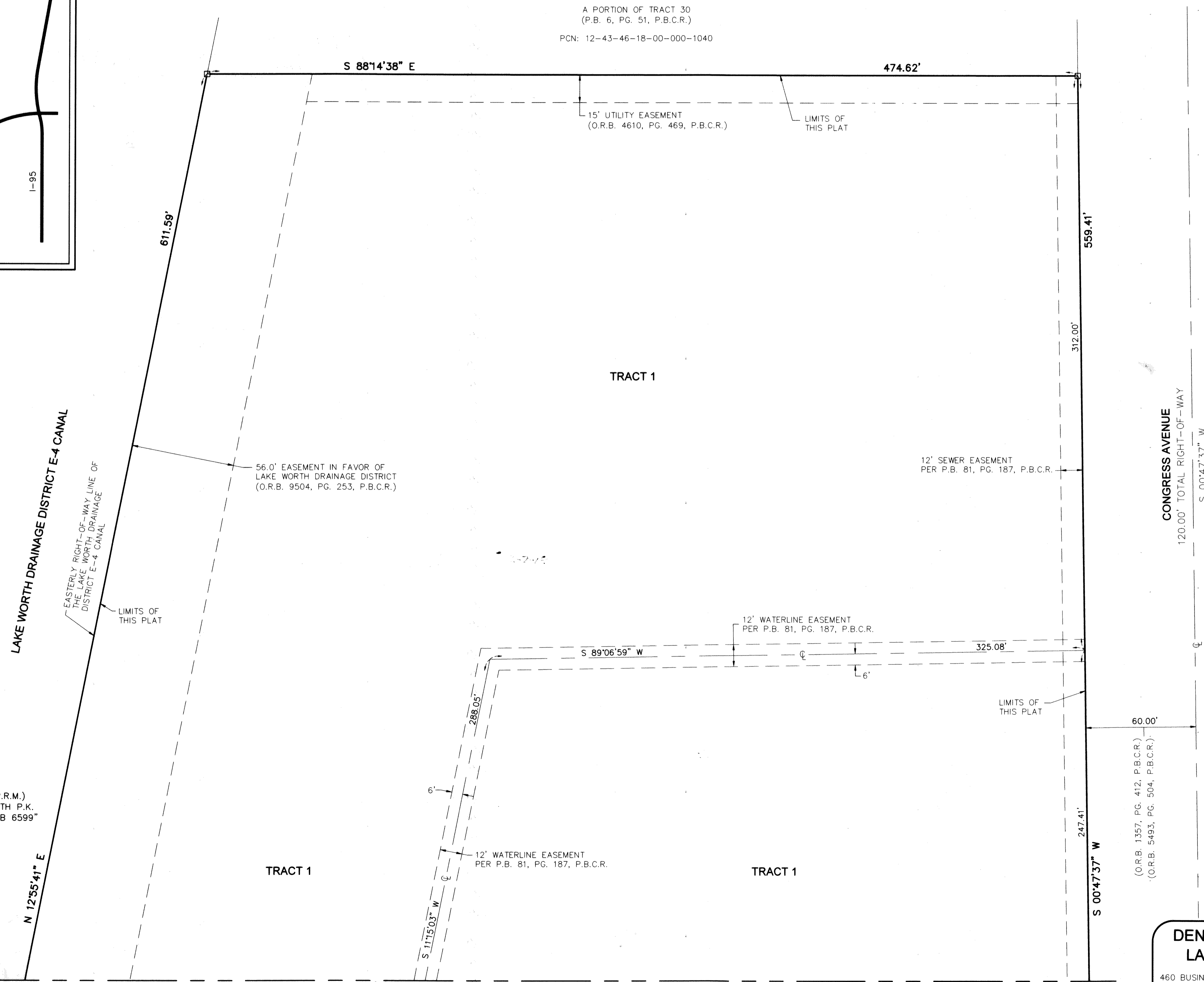
BEING A RE-PLAT OF A PORTION OF TRACT 28, MODEL LAND COMPANY'S SUBDIVISION OF THE NORTH HALF AND PART OF THE SOUTH HALF OF SECTION 18, TOWNSHIP 46 SOUTH, RANGE 43 EAST AS RECORDED IN PLAT BOOK 6, PAGE 51 OF THE PUBLIC RECORDS OF PALM BEACH COUNTY, FLORIDA. TOGETHER WITH A RE-PLAT OF TRACT A AND A PORTION OF TRACT B, PALM-TRAN SATELLITE FACILITY AS RECORDED IN PLAT BOOK 81, PAGE 187 OF THE PUBLIC RECORDS OF PALM BEACH COUNTY, FLORIDA.  
SITUATE IN SECTION 18, TOWNSHIP 46 SOUTH, RANGE 43 EAST, CITY OF DELRAY BEACH, PALM BEACH COUNTY, FLORIDA.  
SHEET 3 OF 3

**196**  
STATE OF FLORIDA )  
COUNTY OF PALM BEACH ) S.S.

THIS INSTRUMENT WAS FILED FOR RECORD AT \_\_\_\_\_ M.  
THIS \_\_\_\_\_  
DAY OF \_\_\_\_\_, 20\_\_\_\_  
AND DULY RECORDED IN:  
PLAT BOOK \_\_\_\_\_  
ON PAGE \_\_\_\_\_  
SHARON R. BOCK  
CLERK & COMPTROLLER  
PALM BEACH COUNTY  
BY: \_\_\_\_\_  
DEPUTY CLERK



LOCATION MAP  
NOT TO SCALE



**LEGEND**

- D = CENTRAL ANGLE
- L = ARC LENGTH
- LB = LICENSED BUSINESS
- O.R.B. = OFFICIAL RECORD BOOK
- P.B. = PLAT BOOK
- P.B.C. = PALM BEACH COUNTY
- P.B.C.R. = PALM BEACH COUNTY RECORDS
- P.C.N. = PARCEL CONTROL NUMBER
- PG. = PAGE(S)
- P.R.M. = PERMANENT REFERENCE MONUMENT
- R = RADIUS
- U.E. = UTILITY EASEMENT
- = PERMANENT REFERENCE MONUMENT (P.R.M.)  
4" DIAMETER CONCRETE MONUMENT WITH P.K.  
NAIL IN BRASS DISC STAMPED "PRM LB 6599"
- ⊕ = CENTERLINE

THIS INSTRUMENT WAS PREPARED BY:  
DAVID A. BOWER, P.S.M. #5888 IN THE OFFICES  
OF DENNIS J. LEAVY AND ASSOCIATES, INC.  
CERTIFICATE OF AUTHORIZATION NUMBER: LB6599  
460 BUSINESS PARK WAY, SUITE B  
ROYAL PALM BEACH, FLORIDA 33411  
PHONE: (561) 753-0650  
FAX: (561) 753-0290

**DENNIS J. LEAVY & ASSOCIATES, INC.**  
**LAND SURVEYORS AND MAPPERS**

460 BUSINESS PARK WAY • SUITE B • ROYAL PALM BEACH, FL • 33411  
PHONE: (561) 753-0650 FAX: (561) 753-0290

SCALE: AS SHOWN	CHECKED BY: RMM	DATE: 04/05/17
DRAWN BY: DAB	JOB NO.: 15-024-001	

MATCHLINE 'A' SEE SHEET 2 OF 3