

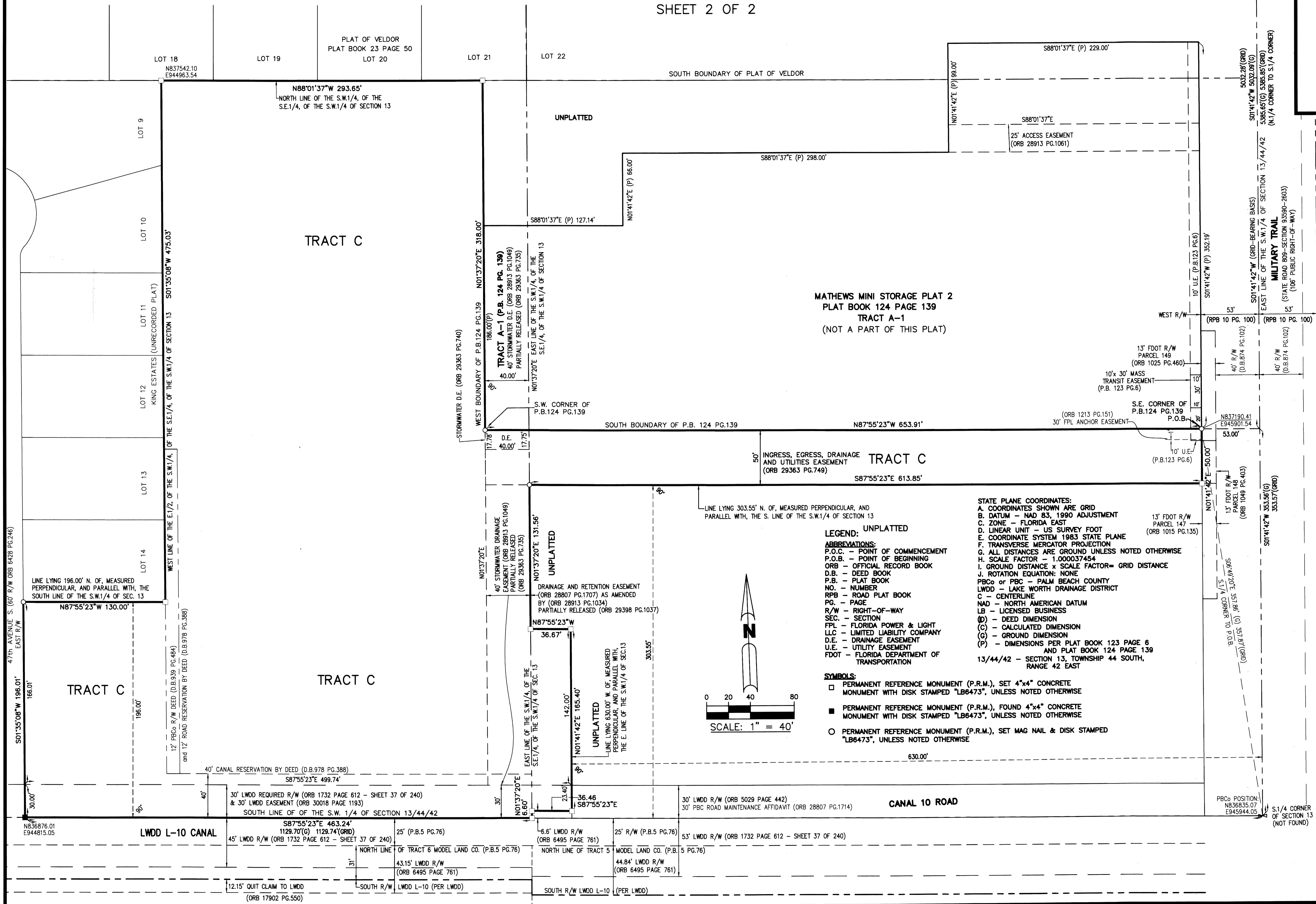


CERTIFICATE OF AUTHORIZATION # LB 6473  
1860 OLD OKEECHOBEE RD., SUITE 509  
WEST PALM BEACH, FLORIDA 33409  
561-615-3988, 615-3986 FAX

# BLUE STORE

LYING IN THE SOUTHEAST QUARTER (S.E. 1/4), OF THE SOUTHWEST QUARTER (S.W. 1/4),  
OF SECTION 13, TOWNSHIP 44 SOUTH, RANGE 42 EAST, PALM BEACH COUNTY, FLORIDA,  
AND A REPLAT OF TRACT B, PLAT OF MATHEWS MINI STORAGE, RECORDED IN  
PLAT BOOK 123, PAGE 6 OF THE PUBLIC RECORDS OF PALM BEACH COUNTY, FLORIDA

SHEET 2 OF 2



(NOT FOUND)  
N.1/4 CORNER  
OF SECTION 13  
PBCo POSITION:  
N842218.56  
E946103.35

6

**MATHEWS MINI STORAGE PLAT 2**  
**PLAT BOOK 124 PAGE 139**  
**TRACT A-1**  
(NOT A PART OF THIS PLAT)

### LEGEND: UNPLATTED

- ABBREVIATIONS:**  
P.O.C. - POINT OF COMMENCEMENT  
P.O.B. - POINT OF BEGINNING  
ORB - OFFICIAL RECORD BOOK  
D.B. - DEED BOOK  
P.B. - PLAT BOOK  
NO. - NUMBER  
RPB - ROAD PLAT BOOK  
PG. - PAGE  
R/W - RIGHT-OF-WAY  
SEC. - SECTION  
FPL - FLORIDA POWER & LIGHT  
LLC - LIMITED LIABILITY COMPANY  
D.E. - DRAINAGE EASEMENT  
U.E. - UTILITY EASEMENT  
FDOT - FLORIDA DEPARTMENT OF TRANSPORTATION
- STATE PLANE COORDINATES:**  
A. COORDINATES SHOWN ARE GRID  
B. DATUM - NAD 83, 1990 ADJUSTMENT  
C. ZONE - FLORIDA EAST  
D. LINEAR UNIT - US SURVEY FOOT  
E. COORDINATE SYSTEM 1983 STATE PLANE  
F. TRANSVERSE MERCATOR PROJECTION  
G. ALL DISTANCES ARE GROUND UNLESS NOTED OTHERWISE  
H. SCALE FACTOR - 1.000037454  
I. GROUND DISTANCE x SCALE FACTOR = GRID DISTANCE  
J. ROTATION EQUATION: NONE  
PBCo or PBC - PALM BEACH COUNTY  
LWDD - LAKE WORTH DRAINAGE DISTRICT  
C - CENTERLINE  
NAD - NORTH AMERICAN DATUM  
LB - LICENSED BUSINESS  
(D) - DEED DIMENSION  
(C) - CALCULATED DIMENSION  
(G) - GROUND DIMENSION  
(P) - DIMENSIONS PER PLAT BOOK 123 PAGE 6 AND PLAT BOOK 124 PAGE 139  
13/44/42 - SECTION 13, TOWNSHIP 44 SOUTH, RANGE 42 EAST

- SYMBOLS:**  
□ PERMANENT REFERENCE MONUMENT (P.R.M.), SET 4"x4" CONCRETE MONUMENT WITH DISK STAMPED "LB6473", UNLESS NOTED OTHERWISE  
■ PERMANENT REFERENCE MONUMENT (P.R.M.), FOUND 4"x4" CONCRETE MONUMENT WITH DISK STAMPED "LB6473", UNLESS NOTED OTHERWISE  
○ PERMANENT REFERENCE MONUMENT (P.R.M.), SET MAG NAIL & DISK STAMPED "LB6473", UNLESS NOTED OTHERWISE

