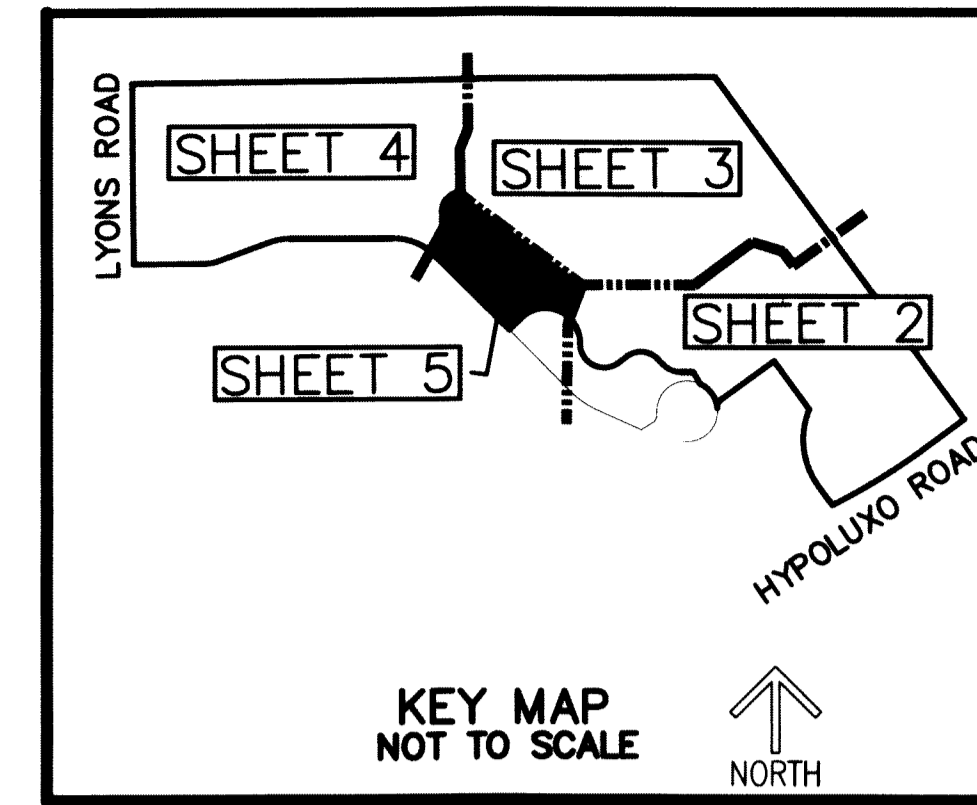


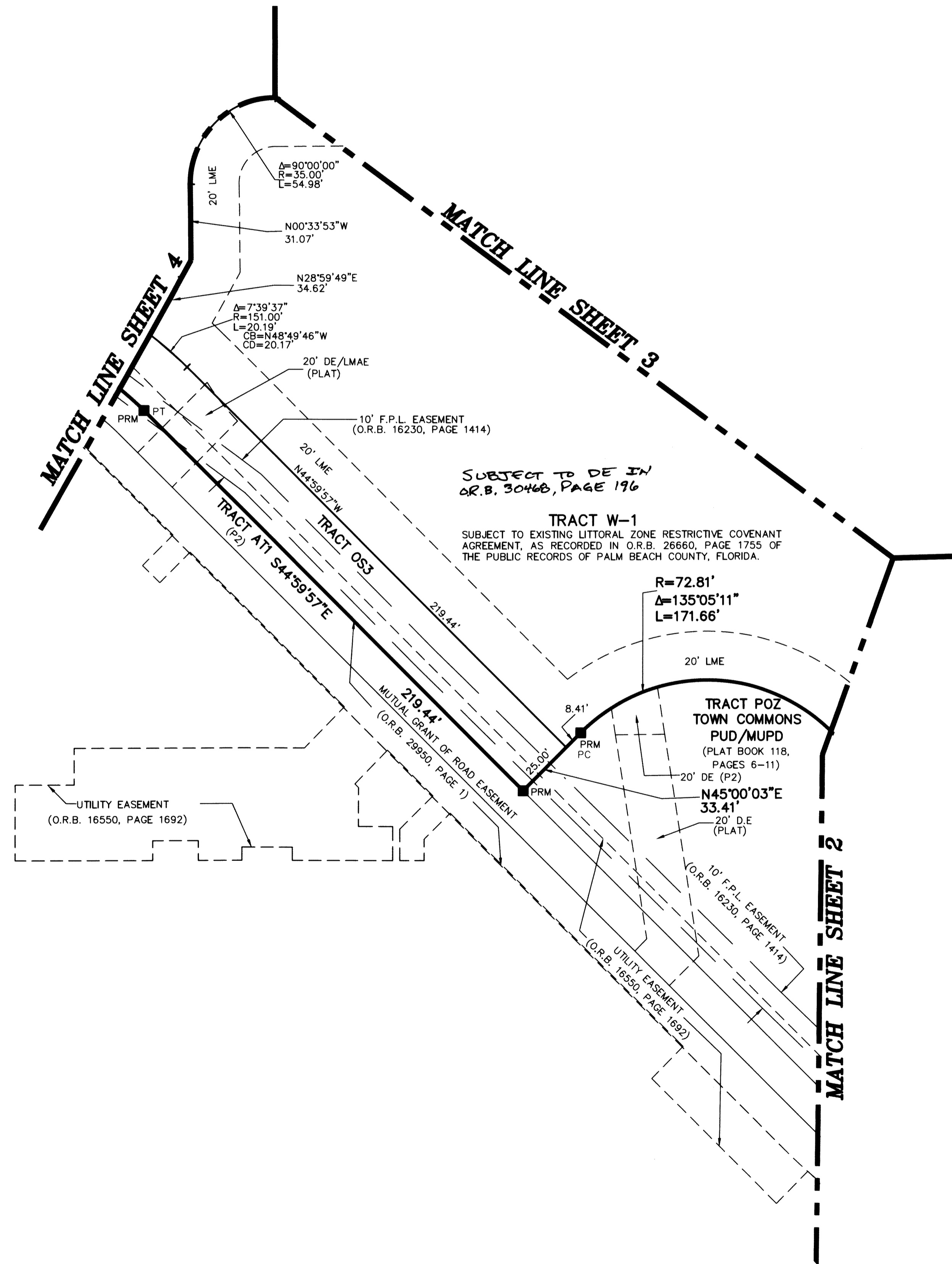
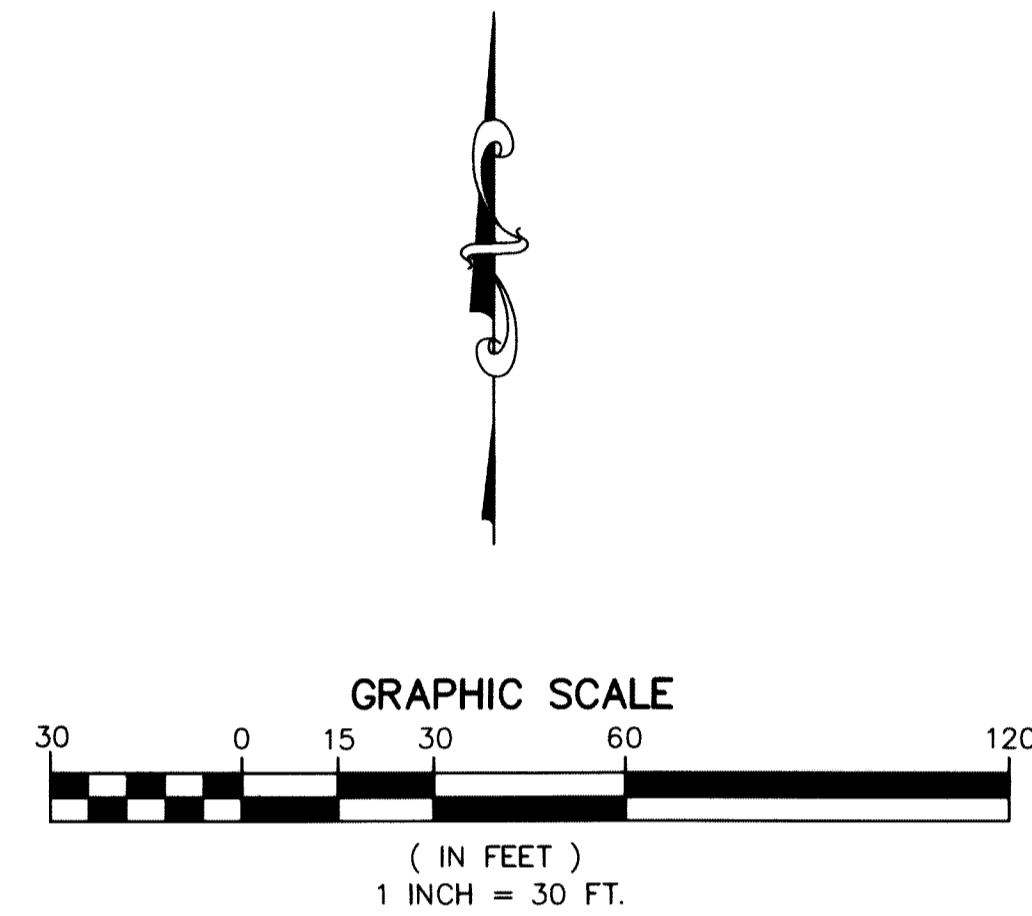
# TOWN COMMONS PUD REPLAT

BEING A REPLAT OF PARCEL A AND TRACT W, TOWN COMMONS PUD/MUPD, ACCORDING TO THE PLAT THEREOF, AS RECORDED IN PLAT BOOK 118, PAGES 6 THROUGH 11 OF THE PUBLIC RECORDS OF PALM BEACH COUNTY, FLORIDA, LYING IN SECTIONS 7 AND 8, TOWNSHIP 45 SOUTH, RANGE 42 EAST, PALM BEACH COUNTY, FLORIDA

THIS INSTRUMENT PREPARED BY  
 DAVID P. LINDLEY  
 OF  
**CAULFIELD and WHEELER, INC.**  
 SURVEYORS - ENGINEERS - PLANNERS  
 7900 GLADES ROAD, SUITE 100  
 BOCA RATON, FLORIDA 33434 - (561)392-1991  
 CERTIFICATE OF AUTHORIZATION NO. LB3591



SHEET 5 OF 5



### NOTES COORDINATES, BEARINGS AND DISTANCES

COORDINATES SHOWN ARE GRID  
 DATUM = NAD 83 1990 ADJUSTMENT  
 ZONE = FLORIDA EAST  
 LINEAR UNIT = US SURVEY FEET  
 COORDINATE SYSTEM 1983 STATE PLANE  
 TRANSVERSE MERCATOR PROJECTION  
 ALL DISTANCES ARE GROUND, UNLESS STATED OTHERWISE  
 SCALE FACTOR = 1.0000221  
 GROUND DISTANCE X SCALE FACTOR = GRID DISTANCE  
 N00°33'53"W (PLAT BEARING) 00°24'06" = BEARING ROTATION  
 N00°57'59"W (GRID BEARING) (PLAT TO GRID)  
 BEARING BASIS LINE COUNTERCLOCKWISE

### LEGEND/ABBREVIATIONS

- ⊙ - CENTERLINE
- Δ - DELTA (CENTRAL ANGLE)
- B.E. - INDICATES BUFFER EASEMENT.
- (C) - CALCULATED
- CB - CHORD BEARING
- CD - CHORD DISTANCE
- DE - DRAINAGE EASEMENT
- E - EASTING (WHEN USED WITH COORDINATES)
- FPCP - DENOTES FOUND PERMANENT CONTROL POINT NAIL AND METAL DISK STAMPED "PCP LB3591"
- L - ARC LENGTH
- LAE - LIMITED ACCESS EASEMENT
- LB - LICENSED BUSINESS
- LMAE - LAKE MAINTENANCE ACCESS EASEMENT
- LME - LAKE MAINTENANCE EASEMENT
- LSE - LIFT STATION EASEMENT
- LW.D.D. - LAKE WORTH DRAINAGE DISTRICT
- MOHE - MAINTENANCE AND OVERHANG EASEMENT
- MUPD - MULTIPLE USE PLANNED DEVELOPMENT
- N - NORTHING (WHEN USED WITH COORDINATES)
- NT - NOT TANGENT
- O.R.B. - OFFICIAL RECORD BOOK
- PC - DENOTES POINT OF CURVATURE
- PUD - DENOTES PLANNED UNIT DEVELOPMENT
- PRC - DENOTES POINT OF REVERSE CURVATURE
- PT - DENOTES POINT OF TANGENCY
- PRAS - PRIVATE RESIDENTIAL ACCESS STREET
- PBCUE - PALM BEACH COUNTY UTILITY EASEMENT
- (R) - RADIAL LINE
- R - RADIUS
- UE - UTILITY EASEMENT
- (PLAT) - DENOTES TOWN COMMONS - PLAT ONE, AS RECORDED IN PLAT BOOK 99, PAGES 68-69 OF THE PUBLIC RECORDS OF PALM BEACH COUNTY, FLORIDA.
- (P2) - DENOTES TOWN COMMONS PUD/MUPD, AS RECORDED IN PLAT BOOK 118, PAGES 6-11 OF THE PUBLIC RECORDS OF PALM BEACH COUNTY, FLORIDA.
- PRM - DENOTES SET PERMANENT REFERENCE MONUMENT 4" x 4" x 24" CONCRETE MONUMENT WITH ALUMINUM DISK STAMPED "C&W PRM LB3591" UNLESS NOTED OTHERWISE
- PCP - DENOTES PERMANENT CONTROL POINT NAIL AND METAL DISK STAMPED "PCP LB3591"
- ▲ PRMND - DENOTES PERMANENT REFERENCE MONUMENT FOUND NAIL AND DISC STAMPED "PRM" LB 3591
- △ PCPND - DENOTES PERMANENT REFERENCE MONUMENT FOUND NAIL AND DISC NO. 7072
- SIRC ● - DENOTES SET 5/8" IRON ROD WITH CAP STAMPED "C&W LB#3591"