

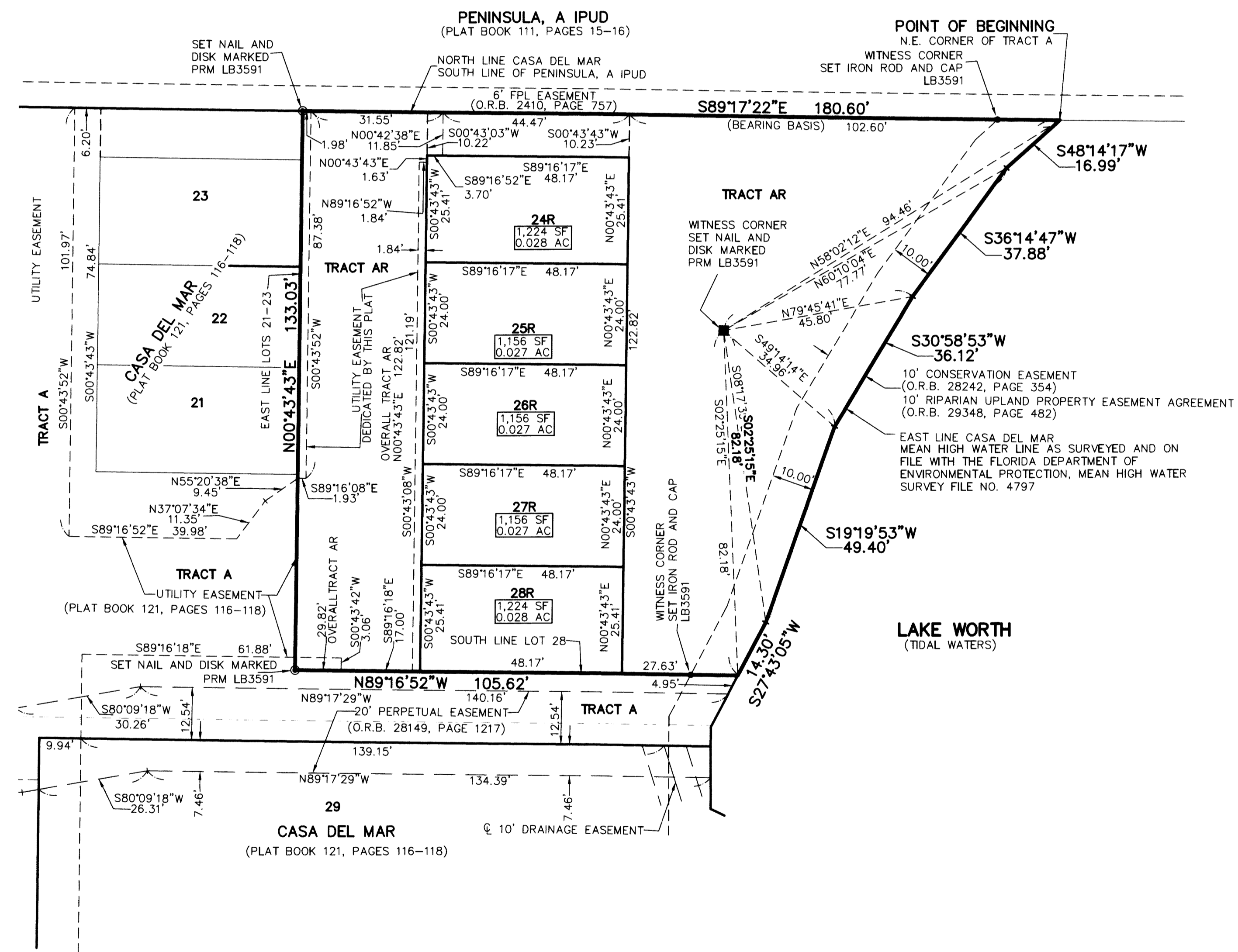
THIS INSTRUMENT PREPARED BY
 DAVID P. LINDLEY
 OF
CAULFIELD and WHEELER, INC.
 SURVEYORS - ENGINEERS - PLANNERS
 7900 GLADES ROAD, SUITE 100
 BOCA RATON, FLORIDA 33434 - (561)392-1991
 CERTIFICATE OF AUTHORIZATION NO. LB 3591
 OCTOBER - 2018

CASA DEL MAR REPLAT

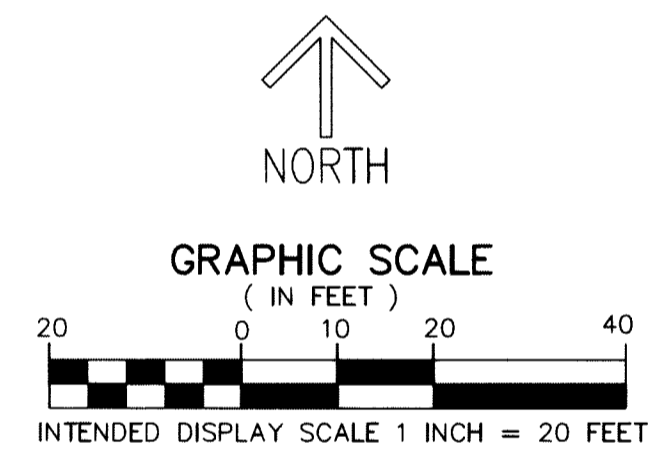
BEING A REPLAT OF A PORTION OF TRACT A AND LOTS 24 THROUGH 28, CASA DEL MAR,
 ACCORDING TO THE PLAT THEREOF, AS RECORDED IN PLAT BOOK 121 PAGES 116 THROUGH 118
 OF THE PUBLIC RECORDS OF PALM BEACH COUNTY, FLORIDA,
 LYING IN SECTION 15, TOWNSHIP 45 SOUTH, RANGE 43 EAST,
 CITY OF BOYNTON BEACH, PALM BEACH COUNTY, FLORIDA

15

SHEET 2 OF 2



TABULAR DATA	SQUARE FEET	ACRES
TRACT AR	12,202	0.2801
RESIDENTIAL LOTS	5,916	0.1358
TOTAL AREA THIS PLAT	18,118	0.4159



- LEGEND/ABBREVIATIONS**
- AC - ACRES
 - CL - CENTERLINE
 - D.E. - DRAINAGE EASEMENT
 - FPL - FLORIDA POWER AND LIGHT COMPANY
 - L.A.E. - LIMITED ACCESS EASEMENT
 - LB - LICENSED BUSINESS
 - O.R.B. - OFFICIAL RECORD BOOK
 - P.L.S. - PROFESSIONAL LAND SURVEYOR
 - SF - SQUARE FEET
 - (TBR) - TO BE RELEASED
 - U.E. - UTILITY EASEMENT
 - PRM - DENOTES PERMANENT REFERENCE MONUMENT
 4" x 4" x 24" CONCRETE MONUMENT WITH
 ALUMINUM DISK STAMPED "C&W PRM LB3591"
 UNLESS OTHERWISE NOTED
 - - DENOTES NAIL AND METAL DISK