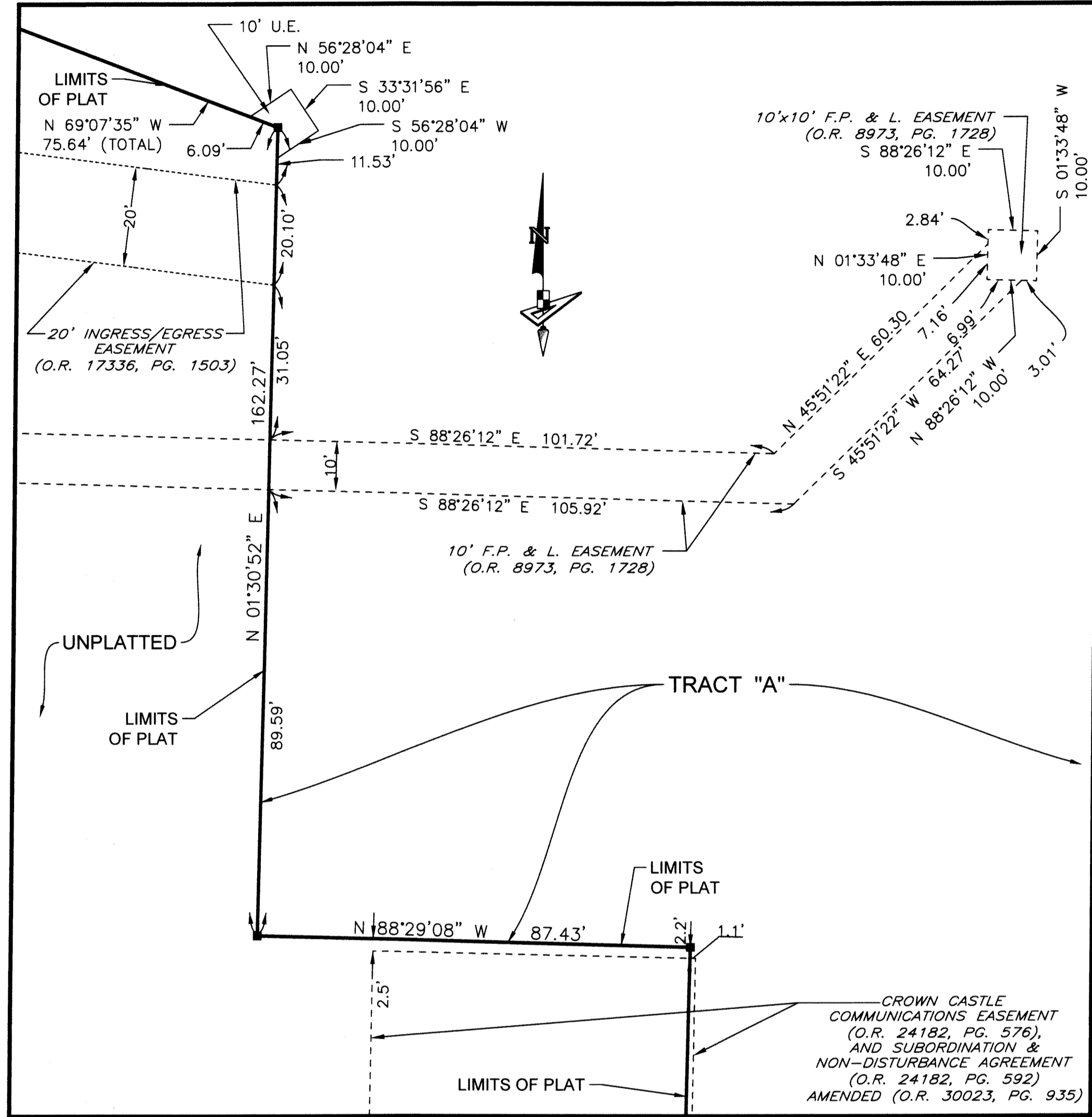


# PACKING HOUSE

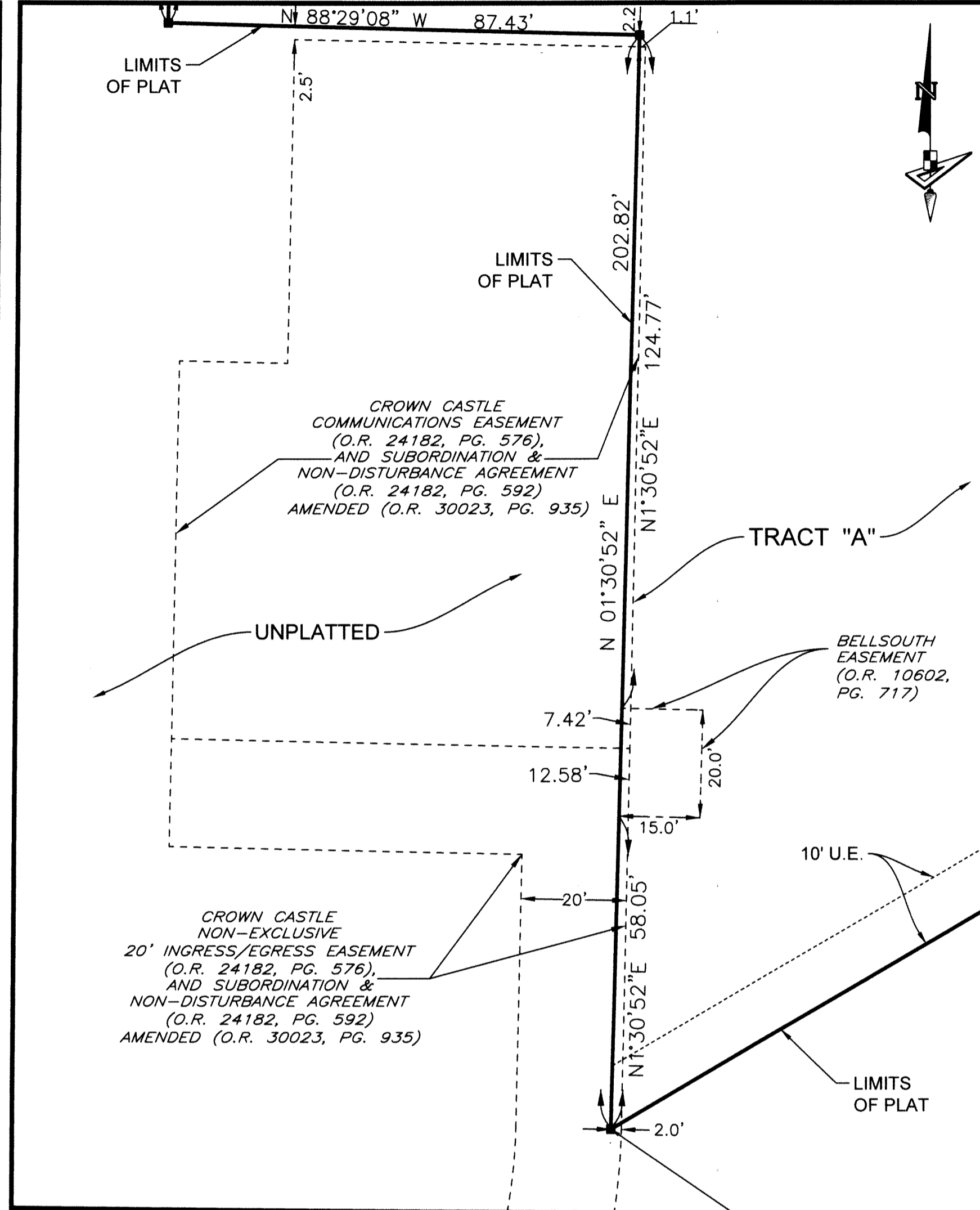
BEING A PLAT OF A PORTION OF  
SECTION 12, TOWNSHIP 43 SOUTH, RANGE 40 EAST,  
CITY OF WESTLAKE, PALM BEACH COUNTY, FLORIDA

28

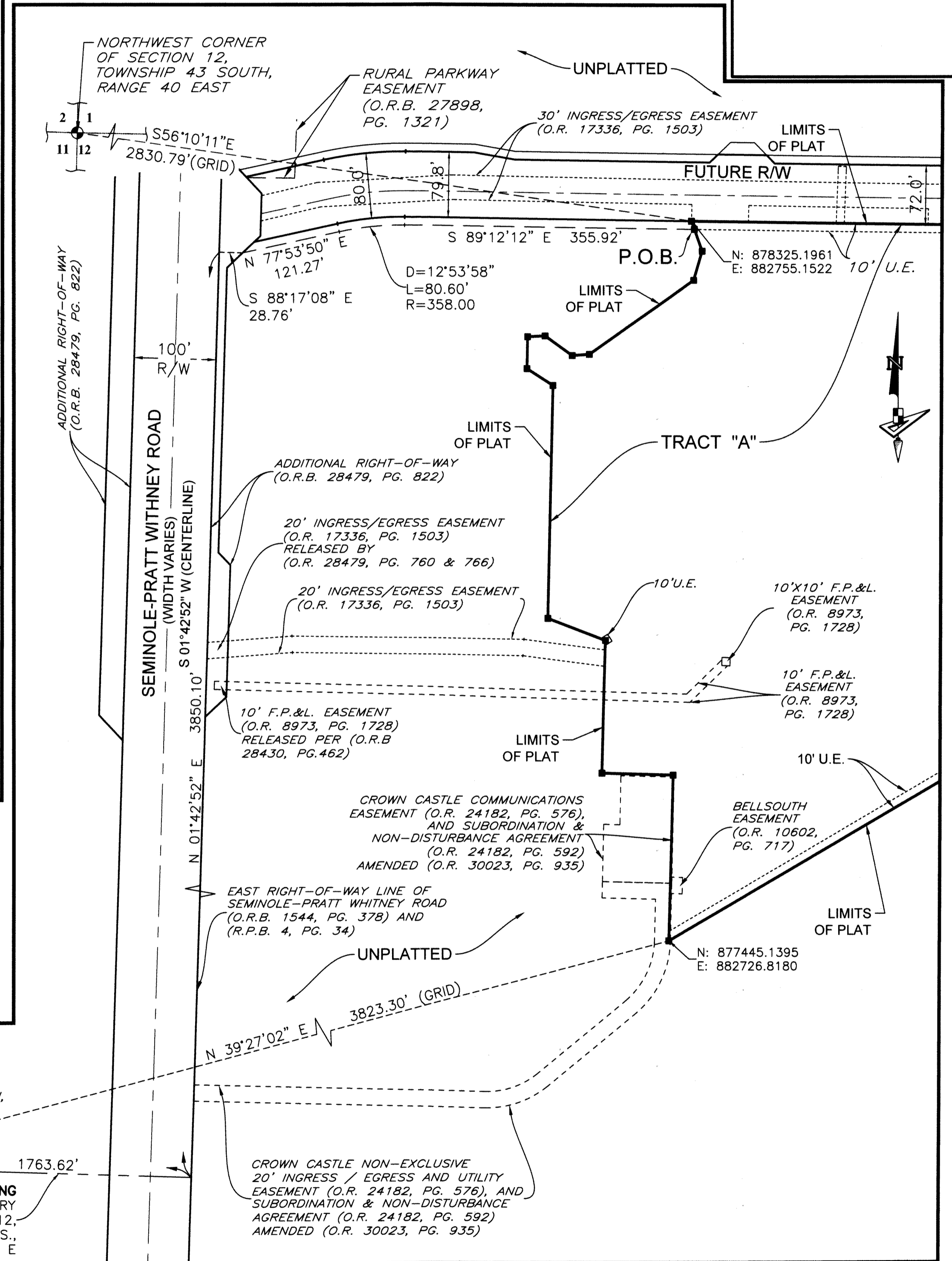
DETAIL "A"  
SCALE: 1"=20'



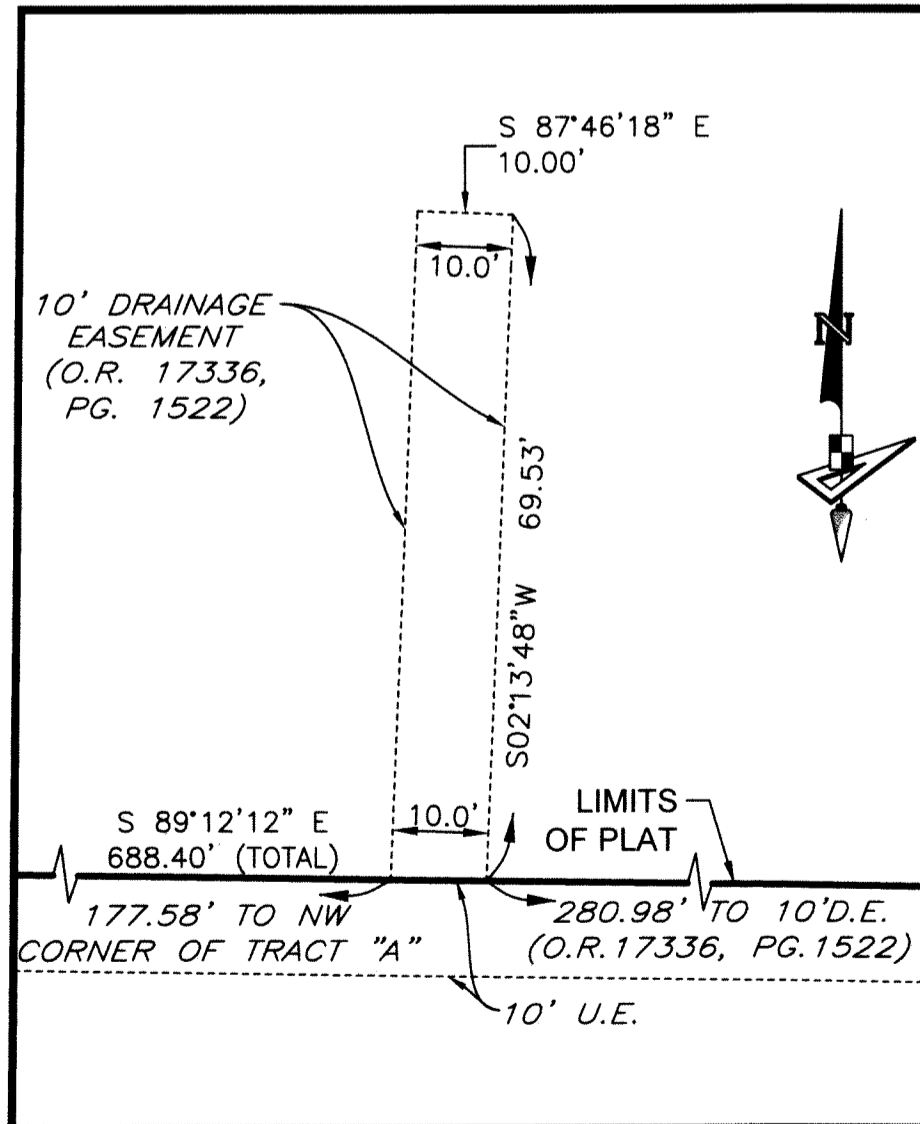
DETAIL "B"  
SCALE: 1"=20'



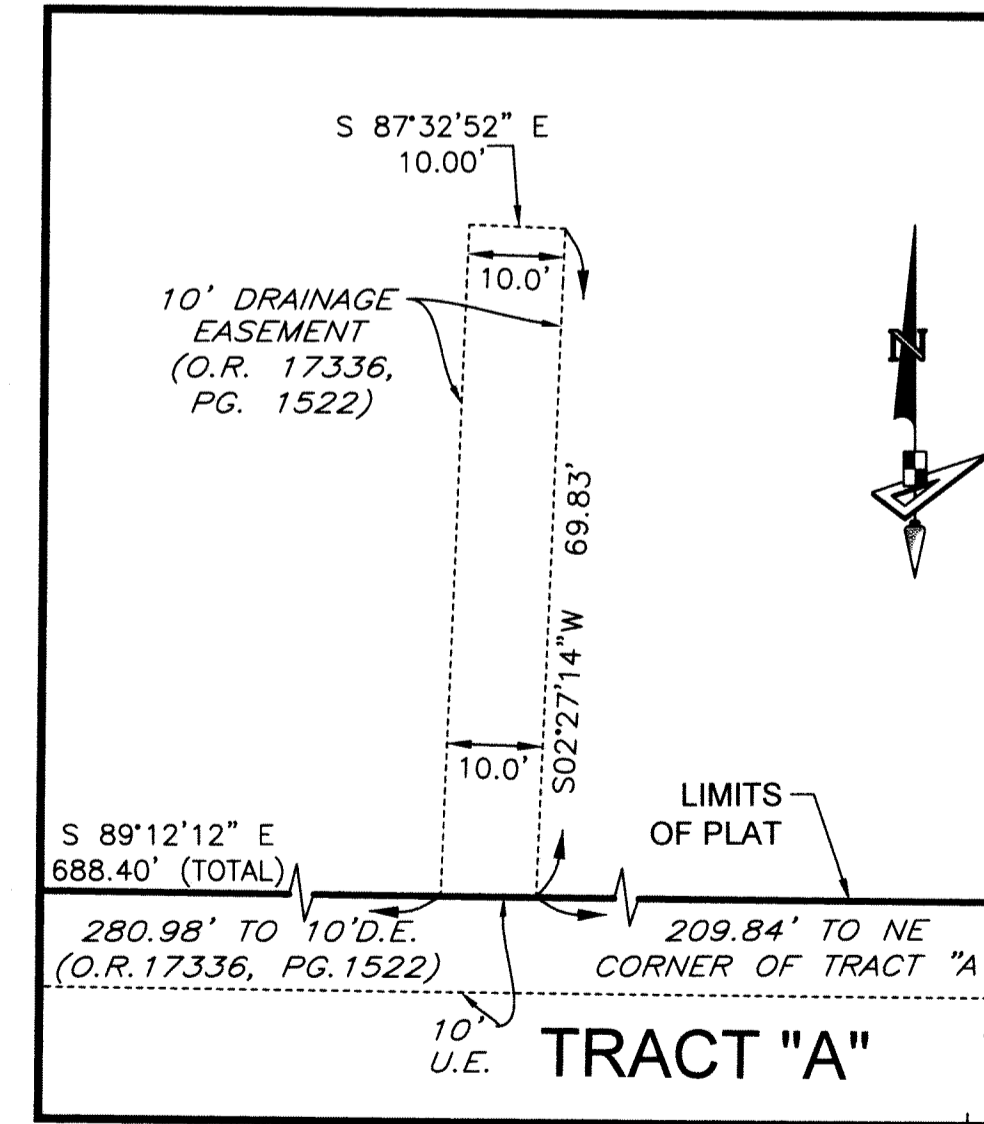
DETAIL "C"  
SCALE: 1"=100'



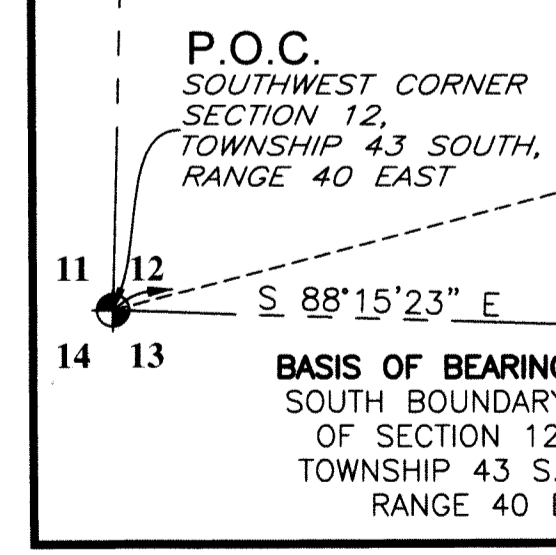
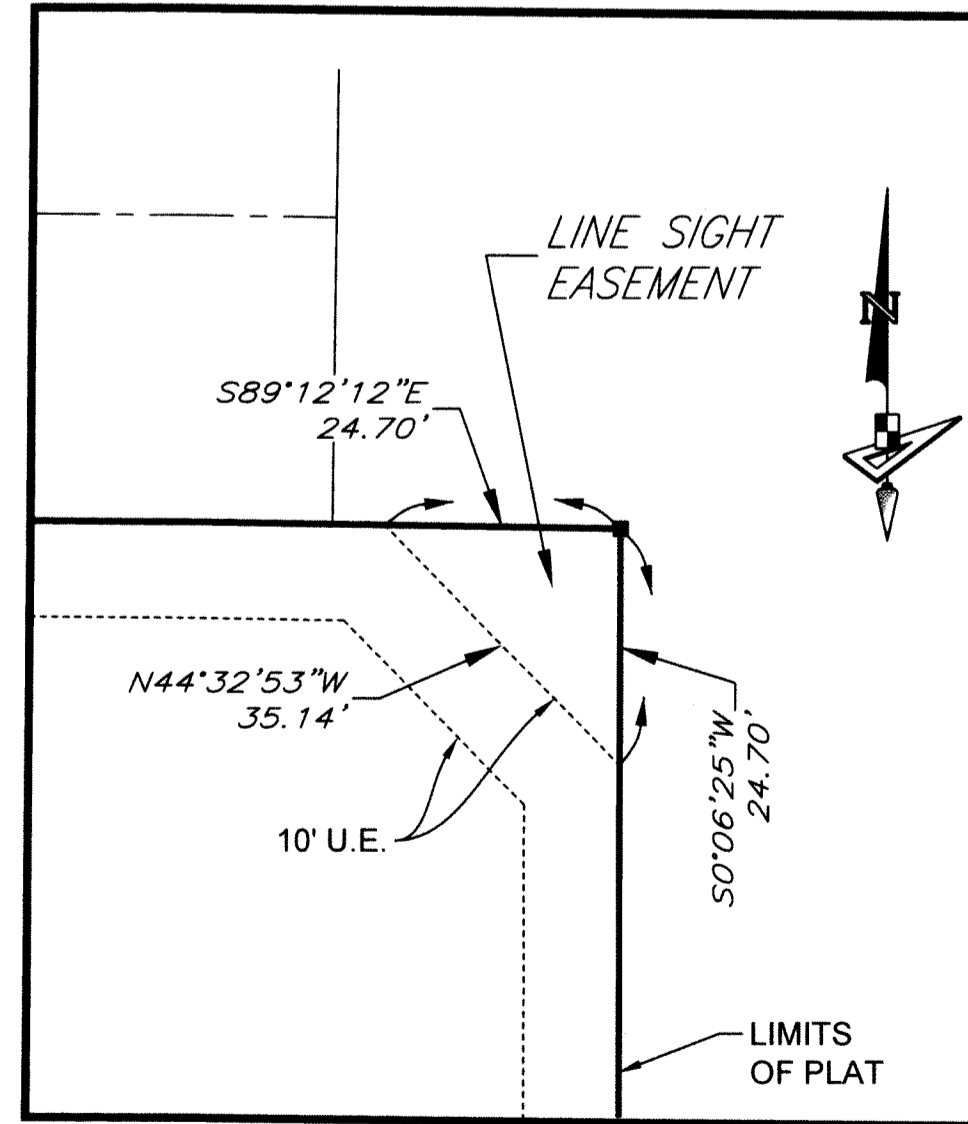
DETAIL "D"  
SCALE: 1"=20'



DETAIL "E"  
SCALE: 1"=20'



DETAIL "F"  
SCALE: 1"=20'



NOTICE: THIS PLAT, AS RECORDED IN ITS GRAPHIC FORM, IS THE OFFICIAL DEPICTION OF THE SUBDIVIDED LANDS DESCRIBED HEREIN AND WILL IN NO CIRCUMSTANCES BE SUPPLANTED IN AUTHORITY BY ANY OTHER GRAPHIC OR DIGITAL FORM OF THE PLAT. THERE MAY BE ADDITIONAL RESTRICTIONS THAT ARE NOT RECORDED ON THIS PLAT THAT MAY BE FOUND IN THE PUBLIC RECORDS OF THIS COUNTY.

**SURVEYORS NOTES:**  
BEARINGS SHOWN HEREON ARE BASED ON THE SOUTH LINE OF SECTION 12, TOWNSHIP 43 SOUTH, RANGE 40 EAST, HAVING A GRID BEARING OF S.88°15'23"E. AS DETERMINED BY GEOPPOINT SURVEYING, INC. USING GLOBAL POSITIONING SYSTEMS (GPS) AND LENGEMANN NETWORK. BEARINGS SHOWN HEREON, REFER TO THE STATE PLANE COORDINATE SYSTEM, NORTH AMERICAN DATUM OF 1883 (NAD83 - '07) FOR THE EAST ZONE OF FLORIDA. SAID BASIS OF BEARING IS THE SAME IN THE NORTH AMERICAN DATUM 1983 (NAD83 - '90).

COORDINATES SHOWN HEREON ARE FLORIDA STATE PLANE GRID  
DATUM = NAD83 - 2007 ADJUSTMENT  
ZONE = FLORIDA EAST  
LINEAR UNITS = US SURVEY FEET  
COORDINATE SYSTEM = 1983 STATE PLANE PROJECTION = TRANSVERSE MERCATOR  
ALL DISTANCES ARE GROUND  
SCALE FACTOR = 1.0000  
GROUND DISTANCE X SCALE FACTOR = GRID DISTANCE  
PLAT BEARING = GRID BEARING  
NO ROTATION  
ALL TIES TO SECTION CORNERS AND QUARTER CORNERS ARE GENERATED FROM MEASURED VALUES