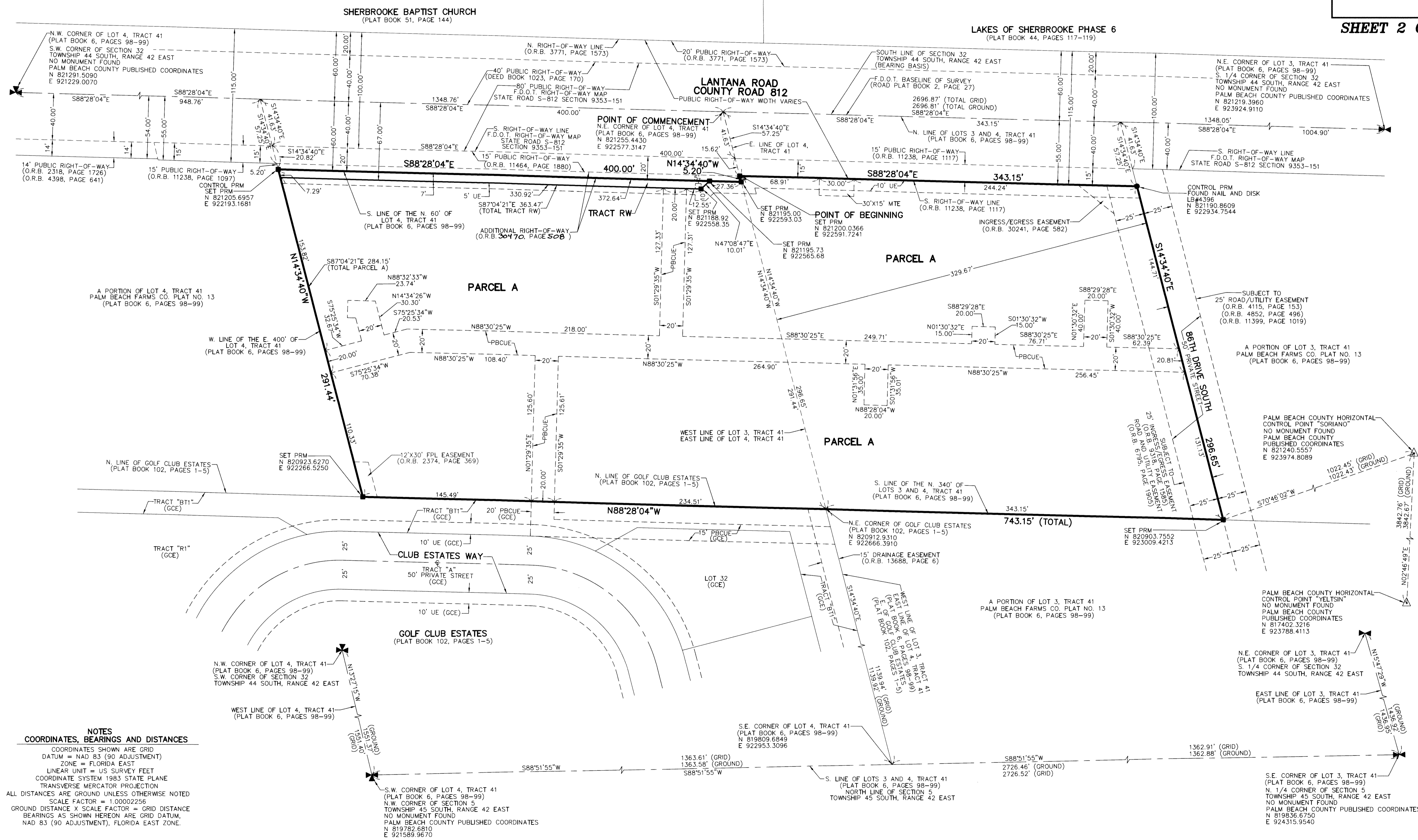
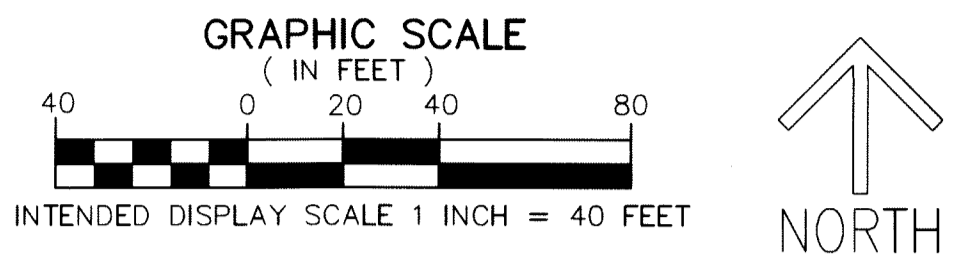


THIS INSTRUMENT PREPARED BY
 DAVID P. LINDLEY
 OF
CAULFIELD and WHEELER, INC.
 SURVEYORS — ENGINEERS — PLANNERS
 7900 GLADES ROAD, SUITE 100
 BOCA RATON, FLORIDA 33434 — (561)392-1991
 CERTIFICATE OF AUTHORIZATION NO. LB3591

MERCHANT'S WALK MUPD

BEING A REPLAT OF A PORTION OF LOTS 3 AND 4, TRACT 41,
 THE PALM BEACH FARMS CO. PLAT NO. 13,
 AS RECORDED IN PLAT BOOK 6, PAGES 98 AND 99 OF THE PUBLIC RECORDS
 OF PALM BEACH COUNTY, FLORIDA
 LYING IN HIATUS TRACT 41, TOWNSHIP 44 1/2 SOUTH, RANGE 42 EAST,
 PALM BEACH COUNTY, FLORIDA

- LEGEND/ABBREVIATIONS**
- CL — CENTERLINE
 - E — EASTING (WHEN USED WITH COORDINATES)
 - F.D.O.T. — FLORIDA DEPARTMENT OF TRANSPORTATION
 - FPL — FLORIDA POWER & LIGHT COMPANY
 - LB — LICENSED BUSINESS
 - MTE — MASS TRANSIT EASEMENT
 - MUPD — MULTIPLE USE PLANNED DEVELOPMENT
 - N — NORTHING (WHEN USED WITH COORDINATES)
 - O.R.B. — OFFICIAL RECORD BOOK
 - PBCUE — PALM BEACH COUNTY UTILITY EASEMENT
 - UE — UTILITY EASEMENT
 - PRM — DENOTES PERMANENT REFERENCE MONUMENT
 4" x 4" x 24" CONCRETE MONUMENT WITH
 ALUMINUM DISK STAMPED "C&W PRM LB3591"
 - — DENOTES NAIL AND DISK
 - (GCE) — DENOTES GOLF CLUB ESTATES
 PLAT BOOK 102, PAGES 1-5
 - △ — DENOTES HORIZONTAL CONTROL POINT



NOTES
COORDINATES, BEARINGS AND DISTANCES
 COORDINATES SHOWN ARE GRID
 DATUM = NAD 83 (90 ADJUSTMENT)
 ZONE = FLORIDA EAST
 LINEAR UNIT = US SURVEY FEET
 COORDINATE SYSTEM 1983 STATE PLANE
 TRANSVERSE MERCATOR PROJECTION
 ALL DISTANCES ARE GROUND UNLESS OTHERWISE NOTED
 SCALE FACTOR = 1.00002256
 GROUND DISTANCE X SCALE FACTOR = GRID DISTANCE
 BEARINGS AS SHOWN HEREON ARE GRID DATUM,
 NAD 83 (90 ADJUSTMENT), FLORIDA EAST ZONE.