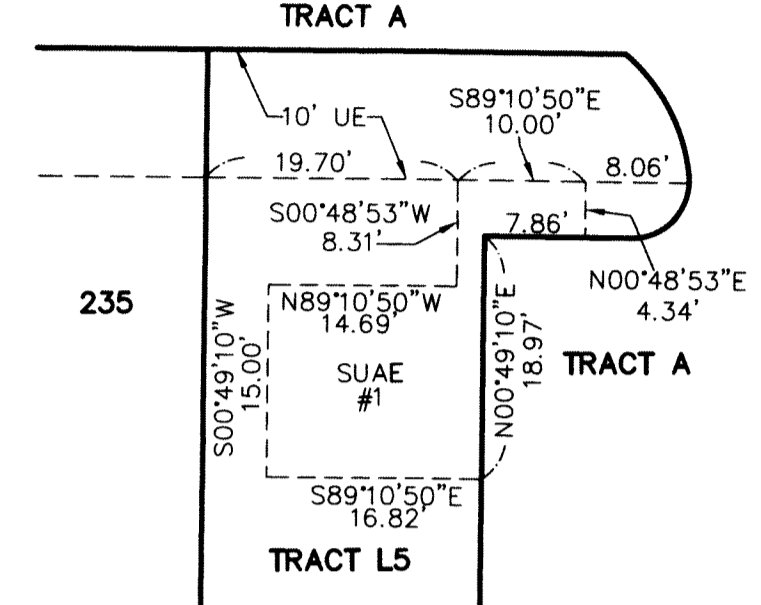


THIS INSTRUMENT PREPARED BY
DAVID P. LINDLEY
OF
CAULFIELD and WHEELER, INC.
SURVEYORS - ENGINEERS - PLANNERS
7900 GLADES ROAD, SUITE 100
BOCA RATON, FLORIDA 33434 - (561)392-1991
CERTIFICATE OF AUTHORIZATION NO. LB3591
JANUARY - 2019

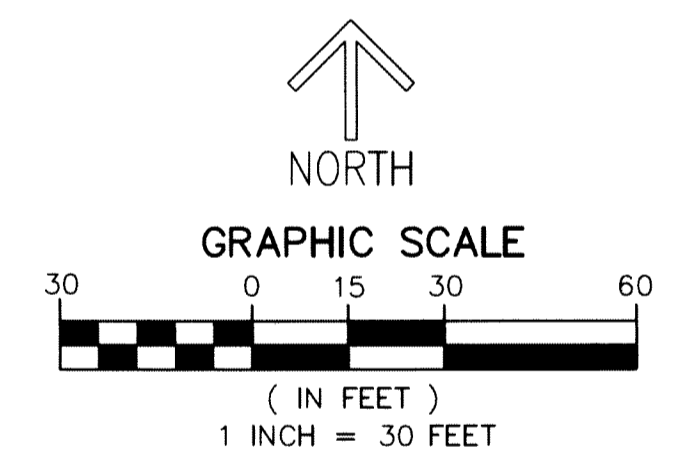
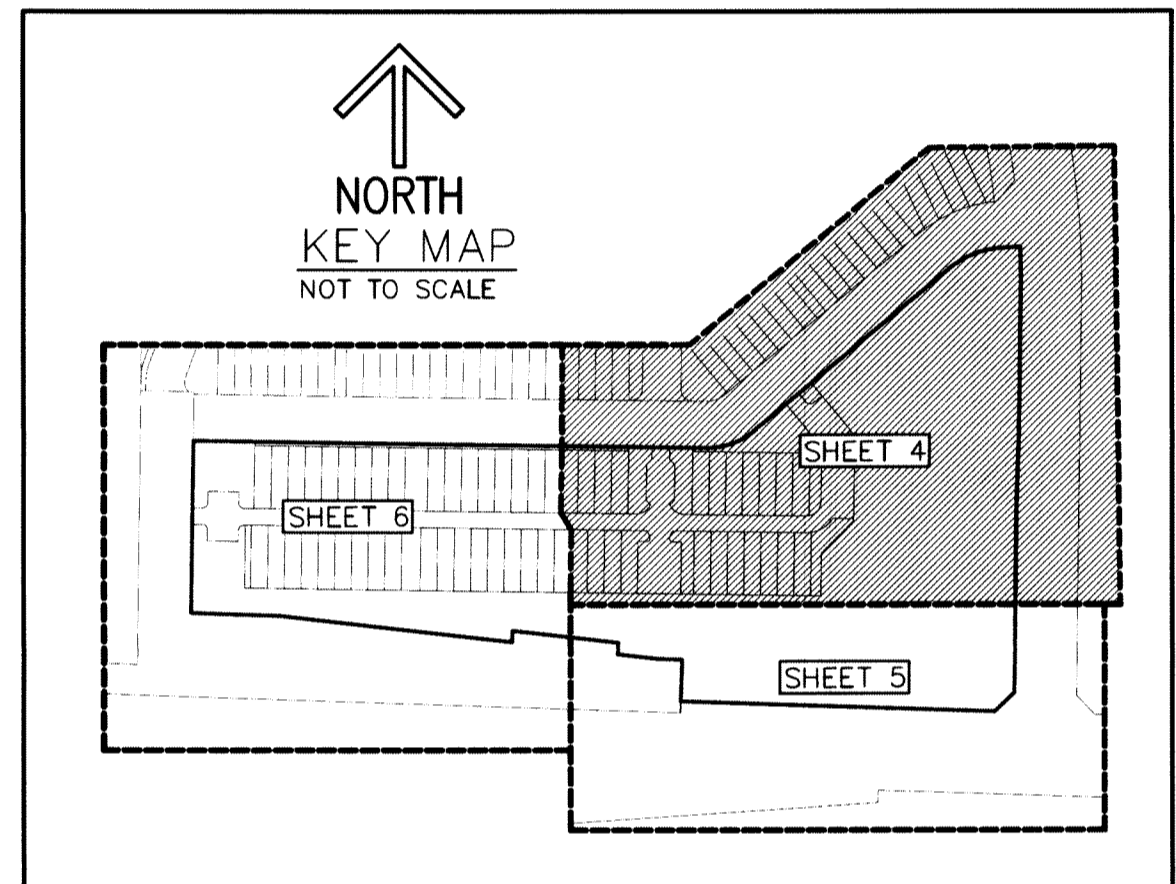
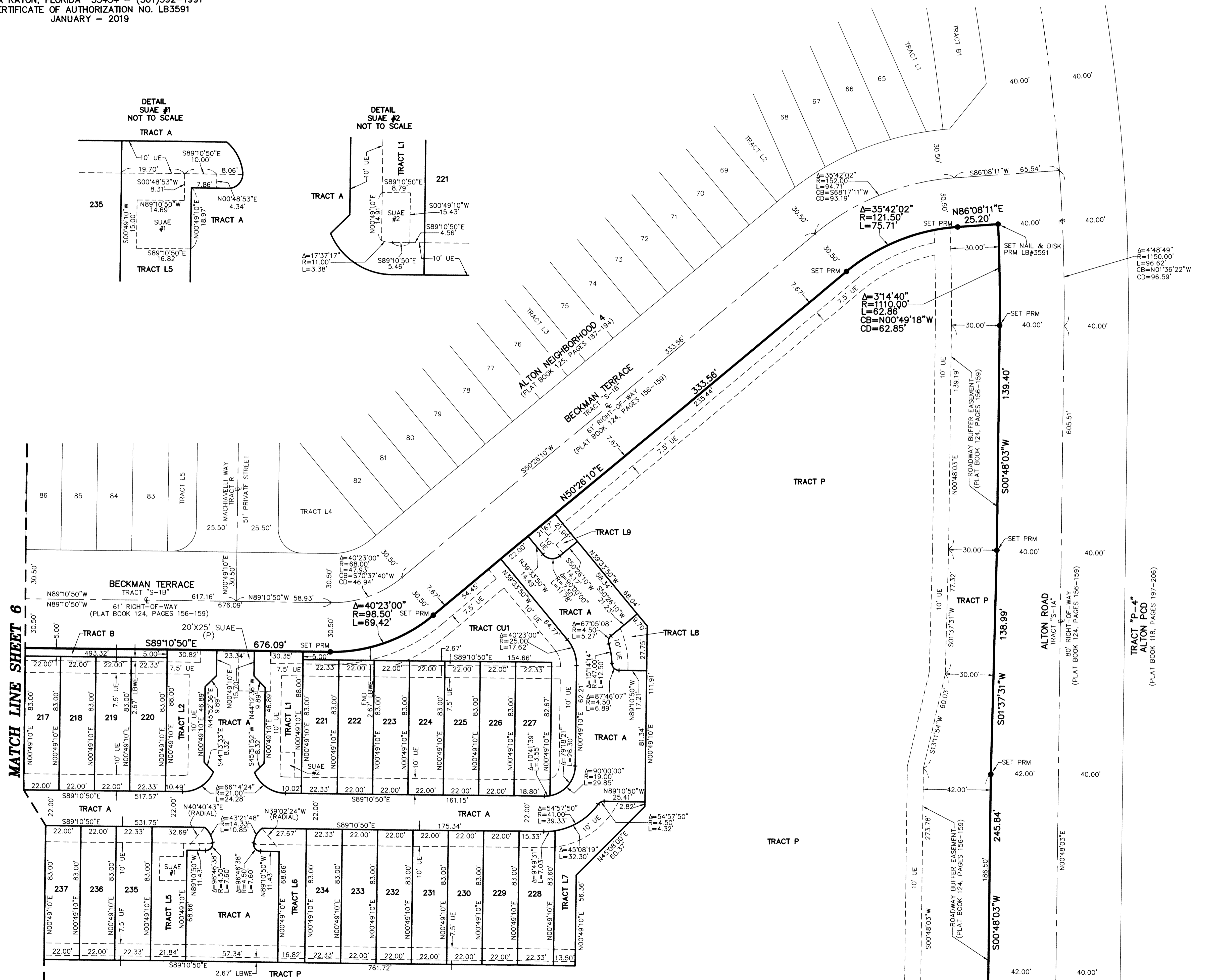
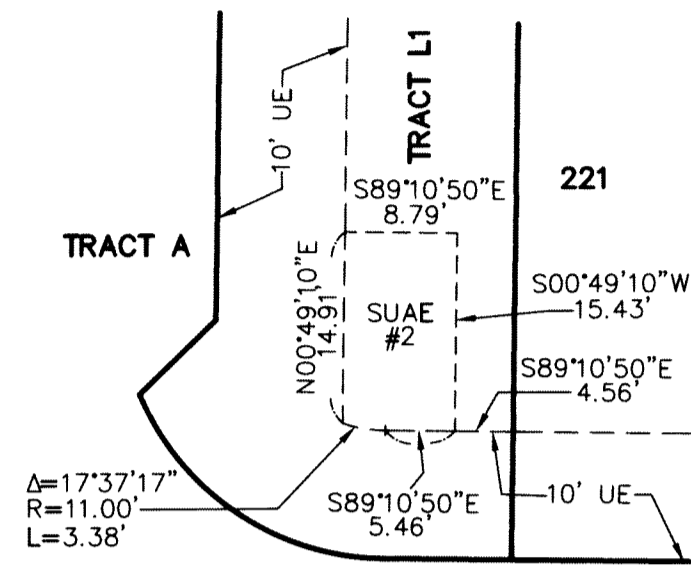
ALTON NEIGHBORHOOD 4 PHASE 2

BEING A REPLAT OF TRACT "CP", ALTON PCD-TRACTS DEF, AS RECORDED IN PLAT BOOK 124, PAGES 156 THROUGH 159
OF THE PUBLIC RECORDS OF PALM BEACH COUNTY, FLORIDA, LYING IN SECTION 35, TOWNSHIP 41 SOUTH, RANGE 42 EAST,
CITY OF PALM BEACH GARDENS, PALM BEACH COUNTY, FLORIDA

DETAIL
SUAE #1
NOT TO SCALE



DETAIL
SUA E #2
NOT TO SCALE



- LEGEND/ABBREVIATIONS**
- CL - CENTERLINE
 - Δ - DELTA (CENTRAL ANGLE)
 - CB - CHORD BEARING
 - CD - CHORD DISTANCE
 - CU - COMMUNITY USE
 - L - ARC LENGTH
 - LB - LICENSED BUSINESS
 - LBWE - LANDSCAPE BUFFER WALL EASEMENT
 - O.R.B. - OFFICIAL RECORD BOOK
 - R - RADIUS
 - RBE - ROADWAY BUFFER EASEMENT
 - SUAE - SEACOAST UTILITY AUTHORITY EASEMENT
 - UE - UTILITY EASEMENT
 - WME - WATER MANAGEMENT EASEMENT
 - PRM - DENOTES PERMANENT REFERENCE MONUMENT
 - FOUND 4"x4" CONCRETE MONUMENT WITH DISK
 - FND PRM - DENOTES PERMANENT REFERENCE MONUMENT FOUND 1/2" IRON ROD WITH ALUMINUM DISK
 - STAMPED "SCHORAH AND ASSOCIATES PRM LB#2438"
 - SET PRM - DENOTES PERMANENT REFERENCE MONUMENT SET 5/8" IRON ROD WITH PLASTIC CAP STAMPED "C&W PRM LB#3591"
 - (P) - DENOTES ALTON PCD-TRACTS DEF, AS RECORDED IN PLAT BOOK 124, PAGES 156 THROUGH 159

MATCH LINE SHEET 6

MATCH LINE SHEET 5