

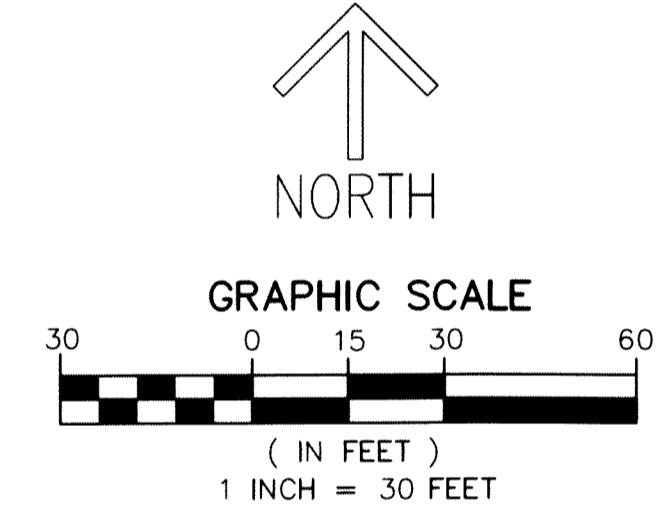
THIS INSTRUMENT PREPARED BY
 DAVID P. LINDLEY
 OF
CAULFIELD and WHEELER, INC.
 SURVEYORS - ENGINEERS - PLANNERS
 7900 GLADES ROAD, SUITE 100
 BOCA RATON, FLORIDA 33434 - (561)392-1991
 CERTIFICATE OF AUTHORIZATION NO. LB3591

85

SHEET 10 OF 20

AVALON TRAILS AT VILLAGES OF ORIOLE PUD

A PLANNED UNIT DEVELOPMENT
 BEING A REPLAT OF ALL OF PARCELS G-1, G-3, G-4, G-5 AND L.W.D.D. CANAL L-33,
 RECREATION PLAT OF VILLAGES OF ORIOLE, AS RECORDED IN PLAT BOOK 31, PAGE 168,
 TOGETHER WITH
 ALL OF THE PLAT OF GOLF AND TENNIS CLUB OF VILLAGES OF ORIOLE,
 AS RECORDED IN PLAT BOOK 31, PAGE 213,
 ALL OF THE PUBLIC RECORDS OF PALM BEACH COUNTY, FLORIDA
 LYING IN SECTIONS 15 AND 16, TOWNSHIP 46 SOUTH, RANGE 42 EAST,
 PALM BEACH COUNTY, FLORIDA

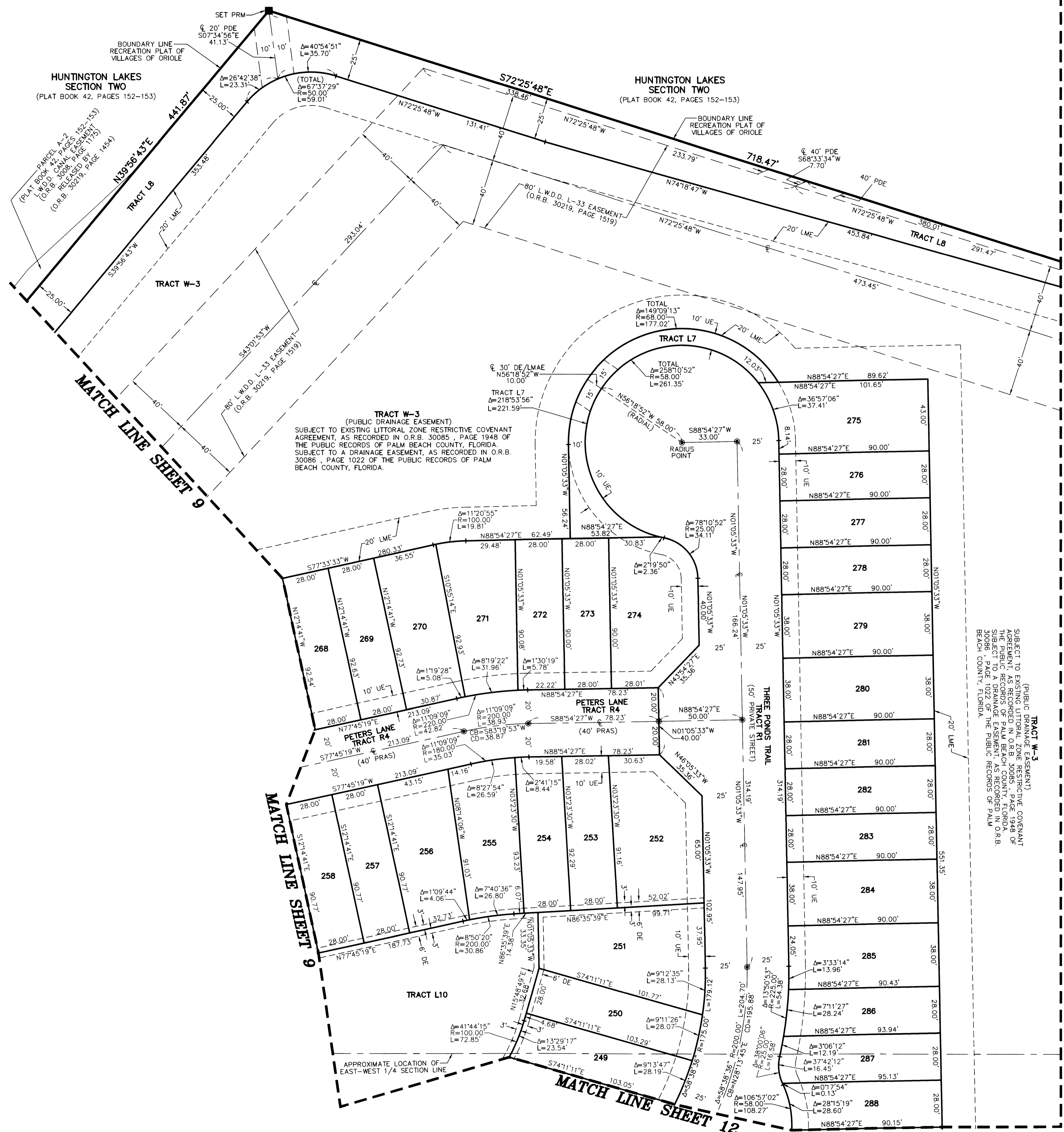
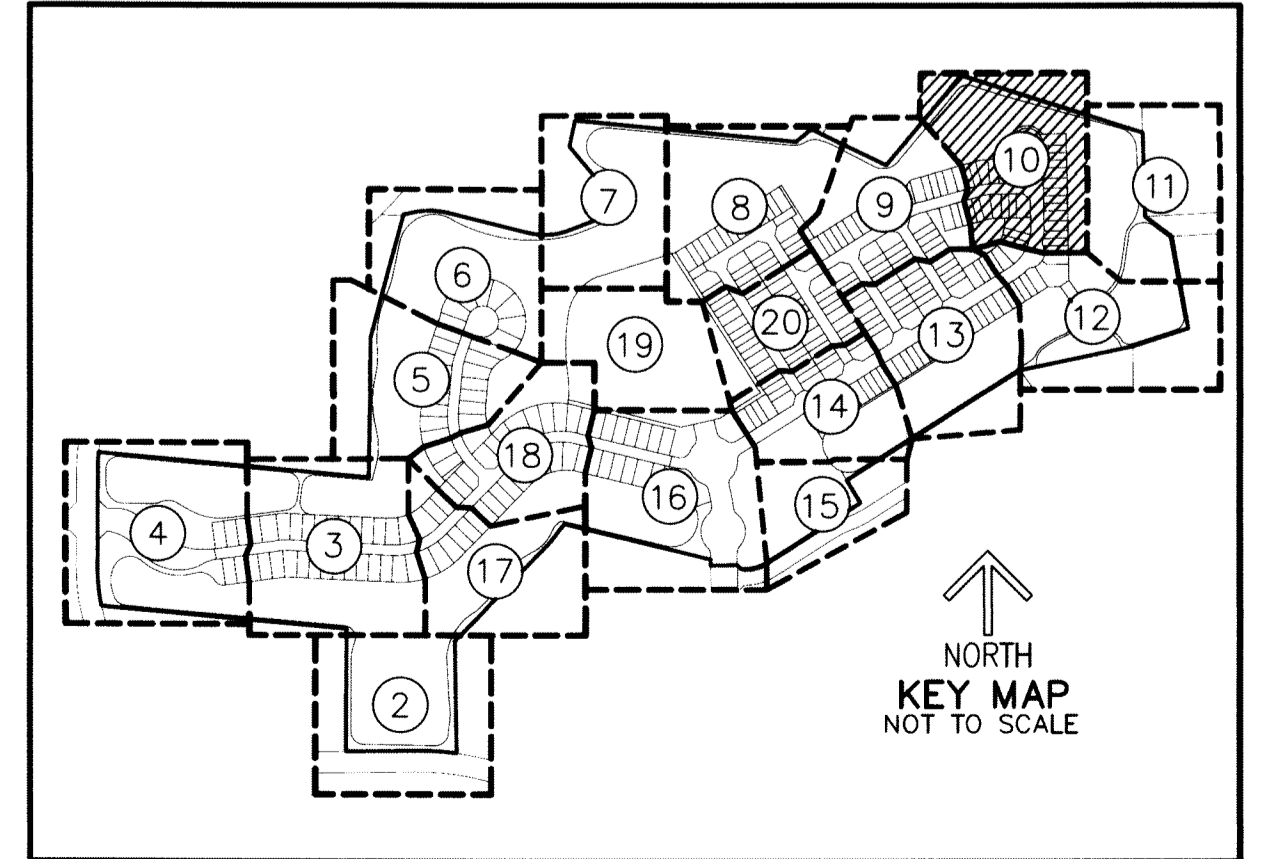


NOTES COORDINATES, BEARINGS AND DISTANCES

COORDINATES SHOWN ARE GRID
 DATUM = NAD 83 (90/98 ADJUSTMENT)
 ZONE = FLORIDA EAST
 LINEAR UNIT = US SURVEY FEET
 COORDINATE SYSTEM 1983 STATE WPLANE
 TRANSVERSE MERCATOR PROJECTION
 ALL DISTANCES ARE GROUND
 SCALE FACTOR = 1.000288
 GROUND DISTANCE X SCALE FACTOR = GRID DISTANCE
 BEARINGS AS SHOWN HEREON ARE GRID DATUM,
 NAD 83 (1990 ADJUSTMENT), FLORIDA EAST ZONE.

LEGEND/ABBREVIATIONS

- CL - CENTERLINE
- Δ - DELTA (CENTRAL ANGLE)
- CB - CHORD BEARING
- CD - CHORD DISTANCE
- DE - DRAINAGE EASEMENT
- E - EASTING (WHEN USED WITH COORDINATES)
- L - ARC LENGTH
- LAE - LIMITED ACCESS EASEMENT
- LB - LICENSED BUSINESS
- LMAE - LAKE MAINTENANCE ACCESS EASEMENT
- LME - LAKE MAINTENANCE EASEMENT
- LSE - LIFT STATION EASEMENT
- L.W.D.D. - LAKE WORTH DRAINAGE DISTRICT
- N - NORTHING (WHEN USED WITH COORDINATES)
- MOHE - MAINTENANCE AND OVERHANG EASEMENT
- O.R.B. - OFFICIAL RECORD BOOK
- PDE - PUBLIC DRAINAGE EASEMENT
- PRAS - PRIVATE RESIDENTIAL ACCESS STREET
- PBCUE - PALM BEACH COUNTY UTILITY EASEMENT
- PC - POINT OF CURVATURE
- PNT - POINT OF NON-TANGENCY
- PRC - POINT OF REVERSE CURVATURE
- PT - POINT OF TANGENCY
- R - RADIUS
- UE - UTILITY EASEMENT
- ◀ - INDICATES "ZERO" SIDE OF LOT LINE
- - DENOTES PERMANENT REFERENCE MONUMENT
 4" x 4" x 24" CONCRETE MONUMENT, WITH
 ALUMINUM DISK STAMPED "C&W FRM LB3591"
- - PCP - DENOTES PERMANENT CONTROL POINT
 NAIL AND METAL DISK STAMPED "PCP LB3591"
- ▲ - DENOTES PERMANENT REFERENCE MONUMENT
 NAIL AND DISC STAMPED "PRM" LB 3591



MATCH LINE SHEET 11

MATCH LINE SHEET 9

MATCH LINE SHEET 9

MATCH LINE SHEET 12

SUBJECT TO EXISTING LITTORAL ZONE RESTRICTIVE COVENANT AGREEMENT, AS RECORDED IN O.R.B. 30085, PAGE 1948 OF THE PUBLIC RECORDS OF PALM BEACH COUNTY, FLORIDA. SUBJECT TO A DRAINAGE EASEMENT, AS RECORDED IN O.R.B. 30086, PAGE 1022 OF THE PUBLIC RECORDS OF PALM BEACH COUNTY, FLORIDA.

(PUBLIC DRAINAGE EASEMENT)

TRACT W-3

HUNTINGTON LAKES SECTION TWO (PLAT BOOK 42, PAGES 152-153)

HUNTINGTON LAKES SECTION TWO (PLAT BOOK 42, PAGES 152-153)

PARCEL A-2 L.W.D.D. CANAL EASEMENT (O.R.B. 30219, PAGE 1153) (O.R.B. 30219, PAGE 1454)

TRACT L8

TRACT W-3

TRACT W-3 (PUBLIC DRAINAGE EASEMENT) SUBJECT TO EXISTING LITTORAL ZONE RESTRICTIVE COVENANT AGREEMENT, AS RECORDED IN O.R.B. 30085, PAGE 1948 OF THE PUBLIC RECORDS OF PALM BEACH COUNTY, FLORIDA. SUBJECT TO A DRAINAGE EASEMENT, AS RECORDED IN O.R.B. 30086, PAGE 1022 OF THE PUBLIC RECORDS OF PALM BEACH COUNTY, FLORIDA.

TRACT L7

TRACT R4

TRACT R4

TRACT L10

MATCH LINE SHEET 12