

THIS INSTRUMENT PREPARED BY
DAVID P. LINDLEY
OF
CAULFIELD and WHEELER, INC.
SURVEYORS — ENGINEERS — PLANNERS
7900 GLADES ROAD, SUITE 100
BOCA RATON, FLORIDA 33434 — (561)392-1991
CERTIFICATE OF AUTHORIZATION NO. LB3591

86

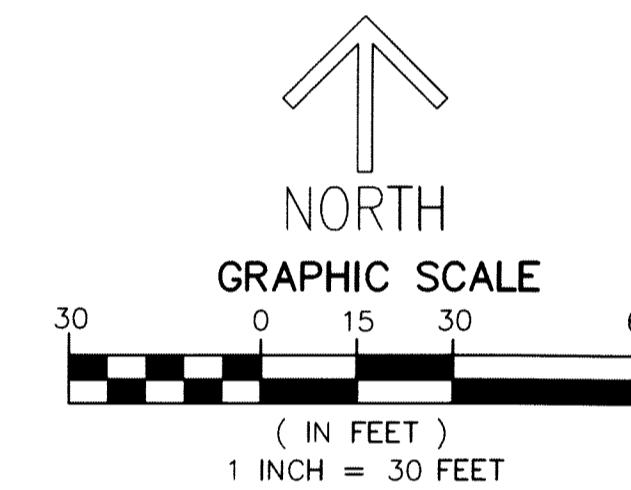
SHEET 11 OF 20

AVALON TRAILS AT VILLAGES OF ORIOLE PUD

A PLANNED UNIT DEVELOPMENT
BEING A REPLAT OF ALL OF PARCELS G-1, G-3, G-4, G-5 AND L.W.D.D. CANAL L-33,
RECREATION PLAT OF VILLAGE OF ORIOLE, AS RECORDED IN PLAT BOOK 31, PAGE 168,
TOGETHER WITH

ALL OF THE PLAT OF GOLF AND TENNIS CLUB OF VILLAGES OF ORIOLE,
AS RECORDED IN PLAT BOOK 31, PAGE 213,

ALL OF THE PUBLIC RECORDS OF PALM BEACH COUNTY, FLORIDA
LYING IN SECTIONS 15 AND 16, TOWNSHIP 46 SOUTH, RANGE 42 EAST,
PALM BEACH COUNTY, FLORIDA

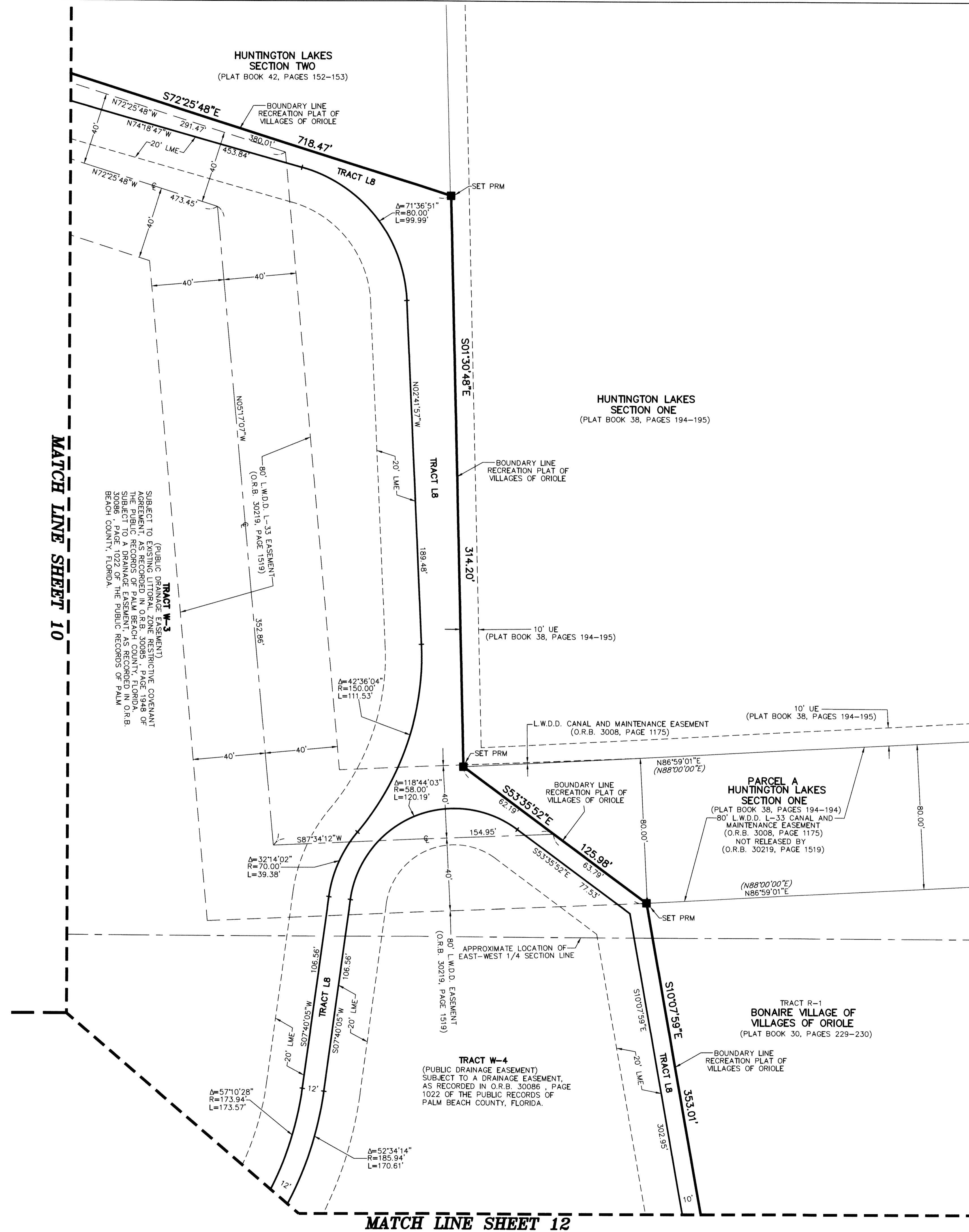
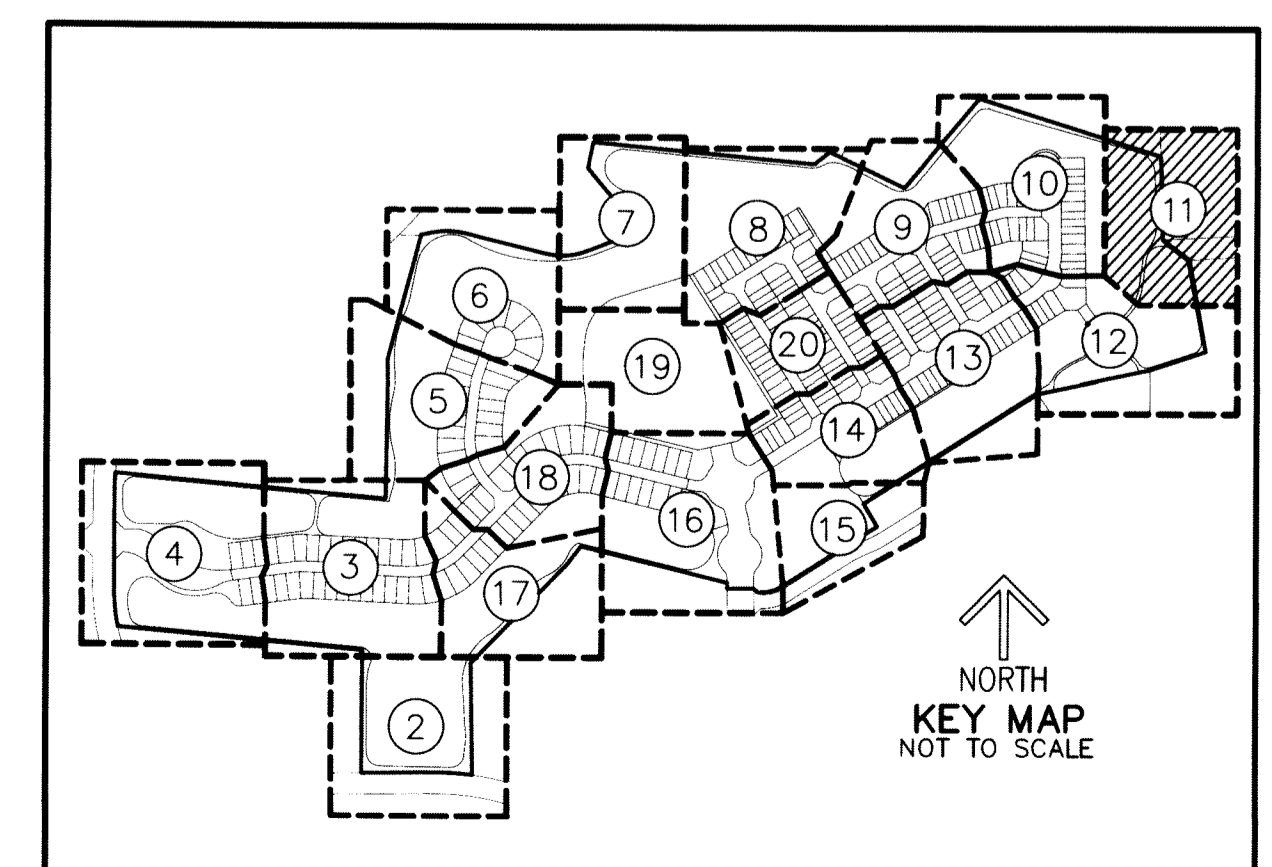


NOTES COORDINATES, BEARINGS AND DISTANCES

COORDINATES SHOWN ARE GRID
DATUM = NAD 83 (90/98 ADJUSTMENT)
ZONE = FLORIDA EAST
LINEAR UNIT = US SURVEY FEET
COORDINATE SYSTEM 1983 STATE PLANE
TRANSVERSE MERCATOR PROJECTION
ALL DISTANCES ARE GROUND
SCALE FACTOR = 1.000288
GROUND DISTANCE X SCALE FACTOR = GRID DISTANCE
BEARINGS AS SHOWN HEREON ARE GRID DATUM,
NAD 83 (1990 ADJUSTMENT), FLORIDA EAST ZONE.

LEGEND/ABBREVIATIONS

- CL — CENTERLINE
- Δ — DELTA (CENTRAL ANGLE)
- CB — CHORD BEARING
- CD — CHORD DISTANCE
- DE — DRAINAGE EASEMENT
- E — EASTING (WHEN USED WITH COORDINATES)
- L — ARC LENGTH
- LAE — LIMITED ACCESS EASEMENT
- LB — LICENSED BUSINESS
- LMAE — LAKE MAINTENANCE ACCESS EASEMENT
- LME — LAKE MAINTENANCE EASEMENT
- LSE — LIFT STATION EASEMENT
- L.W.D.D. — LAKE WORTH DRAINAGE DISTRICT
- N — NORTHING (WHEN USED WITH COORDINATES)
- MOHE — MAINTENANCE AND OVERHANG EASEMENT
- O.R.B. — OFFICIAL RECORD BOOK
- PDE — PUBLIC DRAINAGE EASEMENT
- PRAS — PRIVATE RESIDENTIAL ACCESS STREET
- PBCUE — PALM BEACH COUNTY UTILITY EASEMENT
- PC — POINT OF CURVATURE
- PNT — POINT OF NON-TANGENCY
- PRC — POINT OF REVERSE CURVATURE
- PT — POINT OF TANGENCY
- R — RADIUS
- UE — UTILITY EASEMENT
- ◀ — INDICATES "ZERO" SIDE OF LOT LINE
- PRM — DENOTES PERMANENT REFERENCE MONUMENT
4" x 4" x 24" CONCRETE MONUMENT WITH
ALUMINUM DISK STAMPED "C&W PRM LB3591"
- PCP — DENOTES PERMANENT CONTROL POINT
NAIL AND METAL DISK STAMPED "PCP LB3591"
- ▲ — DENOTES PERMANENT REFERENCE MONUMENT
NAIL AND DISC STAMPED "PRM" LB 3591



MATCH LINE SHEET 10

MATCH LINE SHEET 12

SUBJECT TO EXISTING LITTORAL ZONE RESTRICTIVE COVENANT AGREEMENT AS RECORDED IN O.R.B. 3008, PAGE 1175 OF THE PUBLIC RECORDS OF PALM BEACH COUNTY, FLORIDA.
(PUBLIC DRAINAGE EASEMENT)
SUBJECT TO A DRAINAGE EASEMENT, AS RECORDED IN O.R.B. 3008, PAGE 1022 OF THE PUBLIC RECORDS OF PALM BEACH COUNTY, FLORIDA.

80' L.W.D.D. L-33 EASEMENT (O.R.B. 30219, PAGE 1519)
80' L.W.D.D. L-33 CANAL AND MAINTENANCE EASEMENT (O.R.B. 3008, PAGE 1175)
80' L.W.D.D. EASEMENT (O.R.B. 30219, PAGE 1519)
APPROXIMATE LOCATION OF EAST-WEST 1/4 SECTION LINE

TRACT W-4
(PUBLIC DRAINAGE EASEMENT)
SUBJECT TO A DRAINAGE EASEMENT,
AS RECORDED IN O.R.B. 3008, PAGE 1022 OF THE PUBLIC RECORDS OF PALM BEACH COUNTY, FLORIDA.

PARCEL A
HUNTINGTON LAKES
SECTION ONE
(PLAT BOOK 38, PAGES 194-194)
80' L.W.D.D. L-33 CANAL AND MAINTENANCE EASEMENT (O.R.B. 3008, PAGE 1175)
NOT RELEASED BY (O.R.B. 30219, PAGE 1519)

TRACT R-1
BONAIRE VILLAGE OF VILLAGES OF ORIOLE
(PLAT BOOK 30, PAGES 229-230)