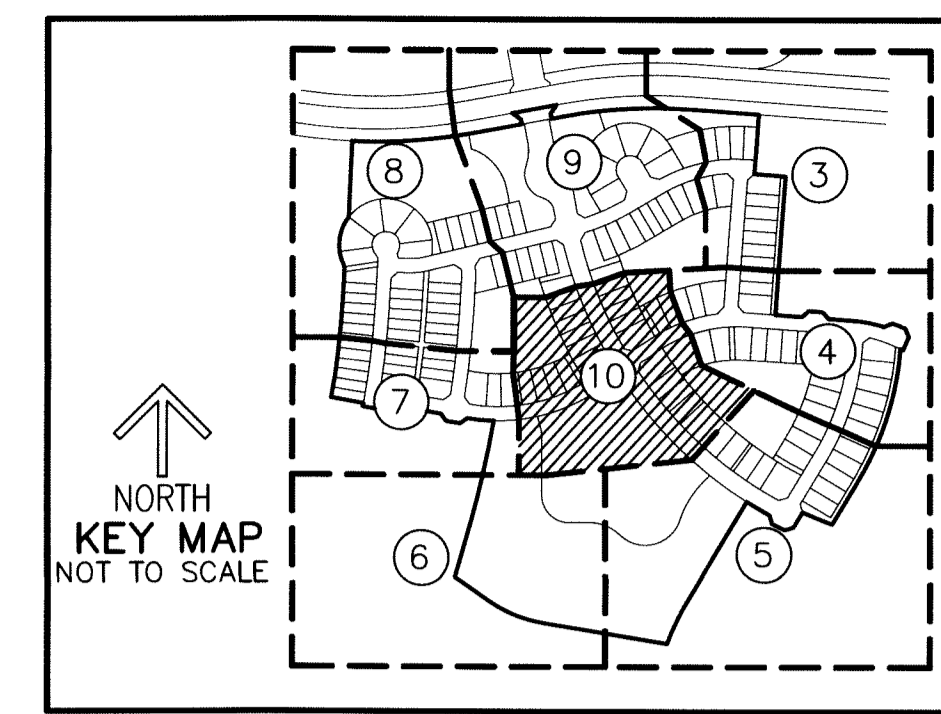


THIS INSTRUMENT PREPARED BY
 DAVID P. LINDLEY
 OF
CAULFIELD and WHEELER, INC.
 SURVEYORS — ENGINEERS — PLANNERS
 7900 GLADES ROAD, SUITE 100
 BOCA RATON, FLORIDA 33434 — (561)392-1991
 CERTIFICATE OF AUTHORIZATION NO. LB3591

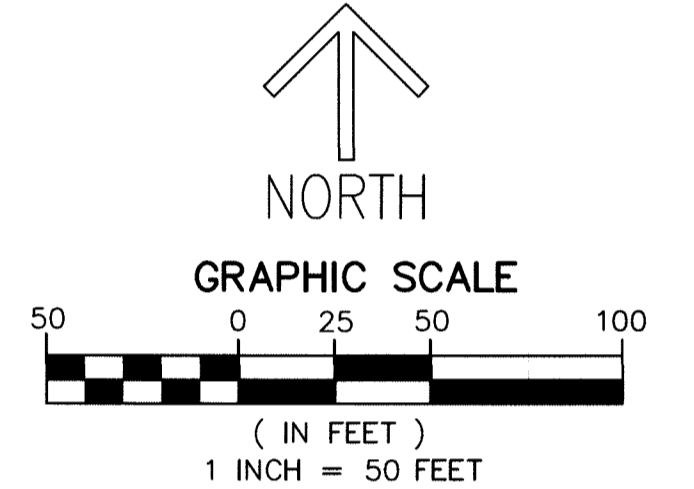
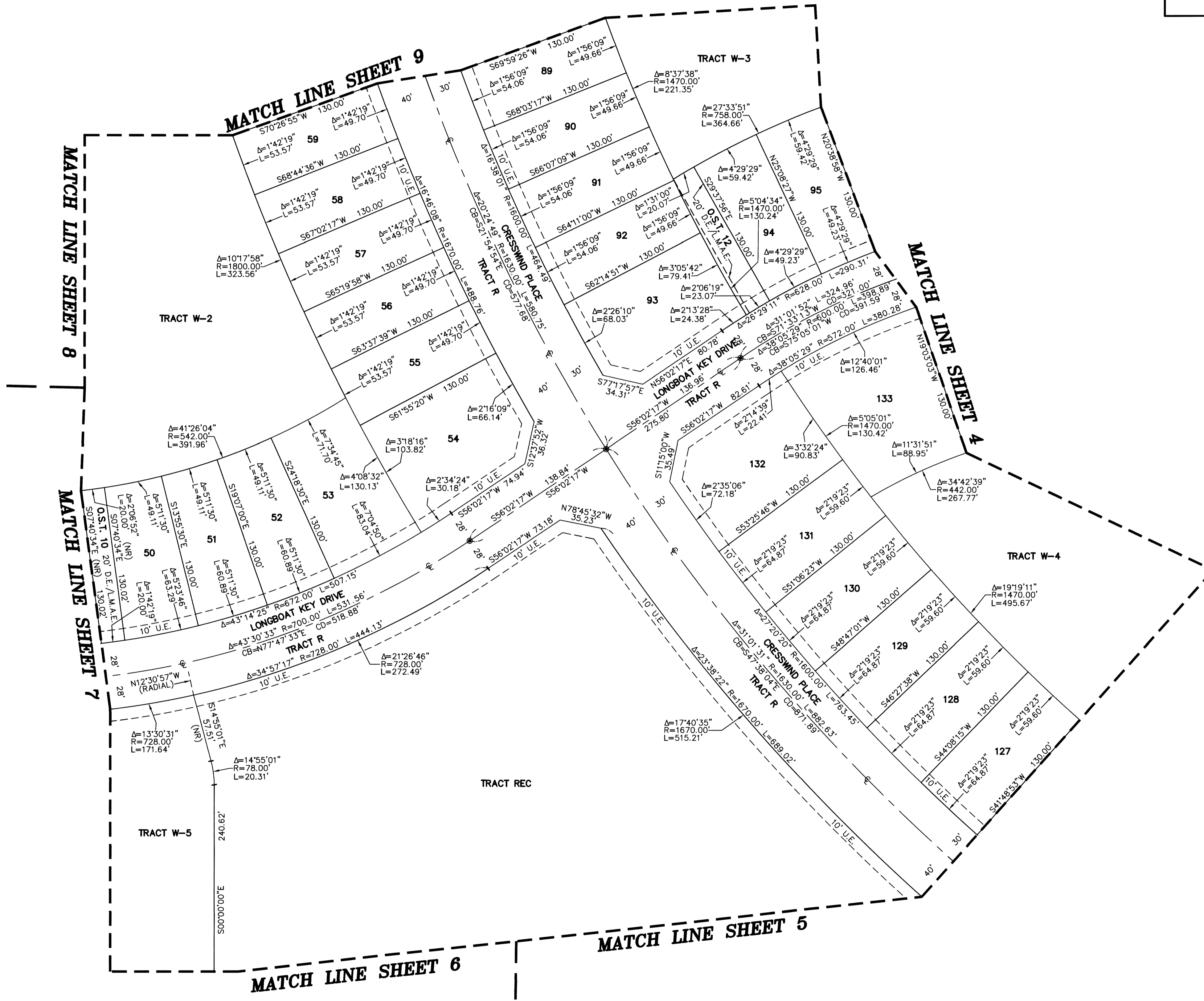
CRESSWIND PALM BEACH PHASE 1

BEING A REPLAT OF ALL OF TRACT W.M.T. 3 AND A PORTION OF TRACT OS-5,
 TOWN CENTER PARKWAY NORTH, AS RECORDED IN PLAT BOOK 123, PAGES 106 THROUGH 118
 OF THE PUBLIC RECORDS OF PALM BEACH COUNTY, FLORIDA,
 TOGETHER WITH A PORTION OF SECTION 6, TOWNSHIP 43 SOUTH, RANGE 41 EAST,
 AND SECTION 1, TOWNSHIP 43 SOUTH, RANGE 40 EAST,
 CITY OF WESTLAKE, PALM BEACH COUNTY FLORIDA



105

SHEET 10 OF 10



NOTES
COORDINATES, BEARINGS AND DISTANCES
 COORDINATES SHOWN ARE GRID
 DATUM = NAD 83 (2007 ADJUSTMENT)
 ZONE = FLORIDA EAST
 LINEAR UNIT = US SURVEY FEET
 COORDINATE SYSTEM 1983 STATE PLANE
 TRANSVERSE MERCATOR PROJECTION
 ALL DISTANCES ARE GROUND
 SCALE FACTOR = 1.0000017
 GROUND DISTANCE X SCALE FACTOR = GRID DISTANCE
 BEARINGS AS SHOWN HEREON ARE GRID DATUM,
 NAD 83 (2007 ADJUSTMENT), FLORIDA EAST ZONE.

- LEGEND/ABBREVIATIONS**
- CL — CENTERLINE
 - Δ — DELTA (CENTRAL ANGLE)
 - BLVD. — BOULEVARD
 - CB — CHORD BEARING
 - CD — CHORD DISTANCE
 - DE — DRAINAGE EASEMENT
 - E — EASTING (WHEN USED WITH COORDINATES)
 - L — ARC LENGTH
 - LMAE — LAKE MAINTENANCE ACCESS EASEMENT
 - LAE — LIMITED ACCESS EASEMENT
 - LB — LICENSED BUSINESS
 - N — NORTHING (WHEN USED WITH COORDINATES)
 - (NR) — NON-RADIAL LINE
 - O.S.T. — OPEN SPACE TRACT
 - PC — POINT OF CURVATURE
 - PCC — POINT OF COMPOUND CURVATURE
 - PNT — POINT OF NON-TANGENCY
 - PRC — POINT OF REVERSE CURVATURE
 - PT — POINT OF TANGENCY
 - R — RADIUS
 - RPE — RURAL PARKWAY EASEMENT
 - U.E. — UTILITY EASEMENT
 - — PERMANENT CONTROL POINT
 - PRM — SET PERMANENT REFERENCE MONUMENT
 SET 5/8" IRON ROD WITH CAP
 STAMPED "C&W PRM LB3591"
 - PRM — FOUND PERMANENT REFERENCE MONUMENT
 4" x 4" x 24" CONCRETE MONUMENT WITH
 DISK STAMPED "PRM LB7768"