

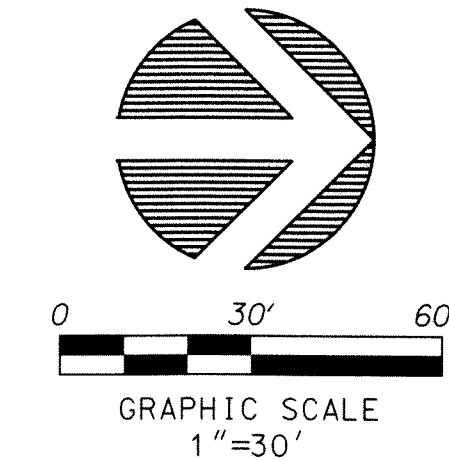
PERIMETER

SURVEYING & MAPPING
 Certificate of Authorization No. LB7264
 Prepared by: Jeff S. Hodapp, P.S.M.
 947 Clint Moore Road
 Boca Raton, Florida 33487
 Tel: (561) 241-9988
 Fax: (561) 241-5182

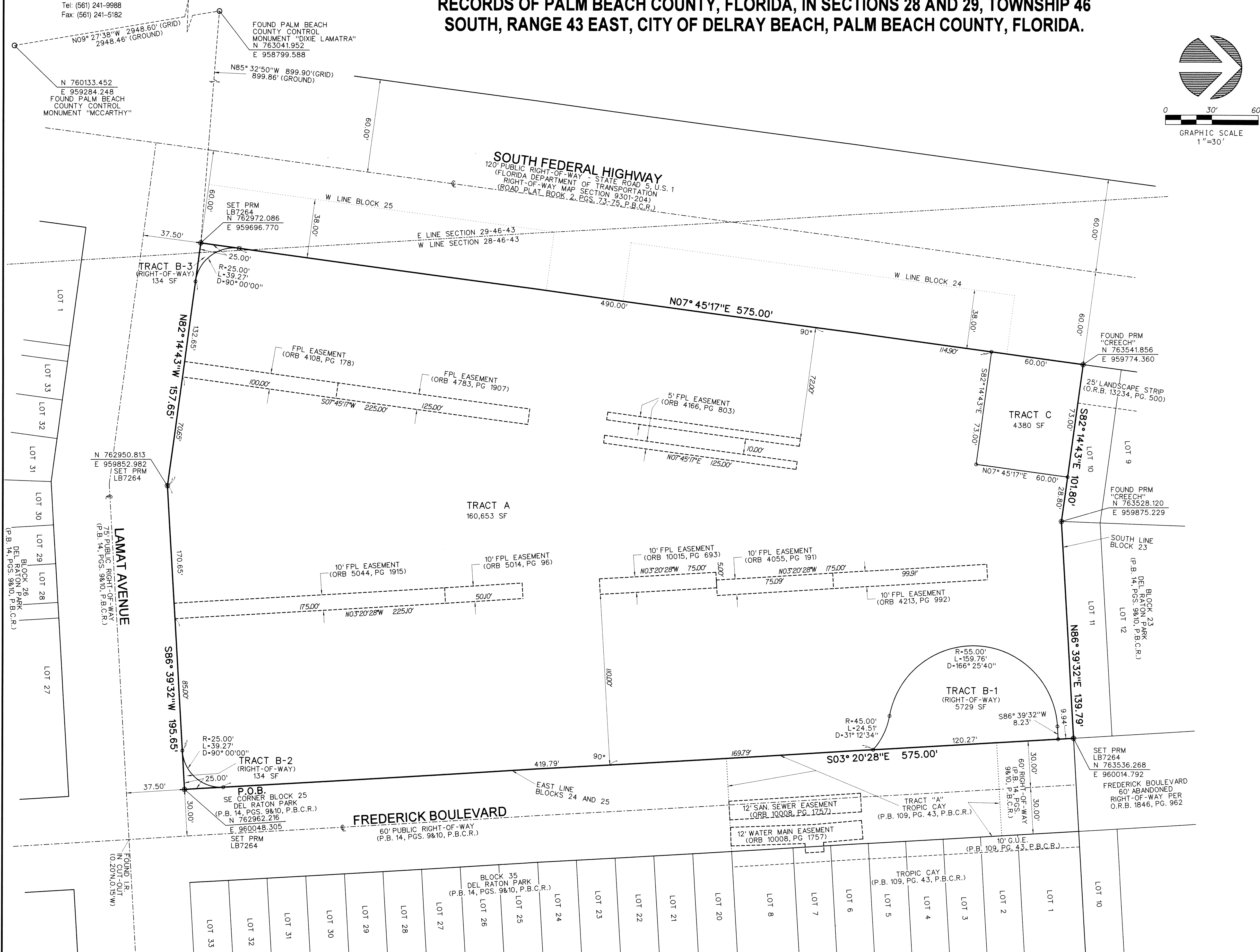
DELRAY CHEVROLET

A REPLAT OF PORTIONS OF BLOCKS 24 AND 25, INCLUDING THE INTERNAL ALLEYS, AVENUE F AND AVENUE G, "DEL RATON PARK", ACCORDING TO THE PLAT THEREOF, AS RECORDED IN PLAT BOOK 14 AT PAGES 9 AND 10 OF THE PUBLIC RECORDS OF PALM BEACH COUNTY, FLORIDA, IN SECTIONS 28 AND 29, TOWNSHIP 46 SOUTH, RANGE 43 EAST, CITY OF DELRAY BEACH, PALM BEACH COUNTY, FLORIDA.

109



SHEET 2 OF 2



- LEGEND**
- ⊙ - CENTERLINE
 - ⊙ - PRM - SET PERMANENT REFERENCE MONUMENT
 - ⊙ - LB7264, UNLESS NOTED OTHERWISE
 - - SET 1/2" IRON ROD AND CAP •LB7264
 - - SET NAIL & DISK •LB7264
- ABBREVIATIONS:**
- CONC. - CONCRETE
 - COR. - CORNER
 - D. - DELTA (CENTRAL ANGLE)
 - D.E. - DRAINAGE EASEMENT
 - DIA. - DIAMETER
 - G.U.E. - GENERAL UTILITY EASEMENT
 - I.R. - IRON ROD
 - IRC - IRON ROD & CAP
 - L. - ARC LENGTH
 - L.B. - LICENSED BUSINESS
 - L.S. - LICENSED SURVEYOR
 - MON. - MONUMENT
 - N.R. - NON-RADIAL
 - O.R.B. - OFFICIAL RECORDS BOOK
 - P.A.E. - PUBLIC ACCESS EASEMENT
 - P.B.C.R. - PALM BEACH COUNTY RECORDS
 - P.B. - PLAT BOOK
 - PG. - PAGE
 - P.C.P. - PERMANENT CONTROL POINT
 - P.O.B. - POINT OF BEGINNING
 - P.O.C. - POINT OF COMMENCEMENT
 - P.R.M. - PERMANENT REFERENCE MONUMENT
 - P.S.M. - PROFESSIONAL SURVEYOR & MAPPER
 - R. - RADIUS
 - R/W - RIGHT-OF-WAY
 - S.E. - SEWER EASEMENT
 - SEC. - SECTION
 - S.F. - SQUARE FEET
 - U.E. - UTILITY EASEMENT
 - W.E. - WATER EASEMENT