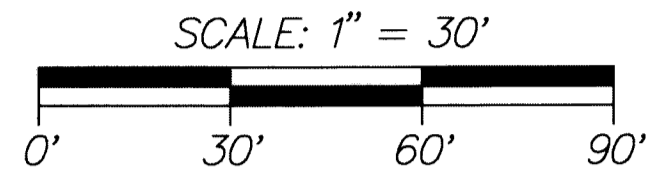
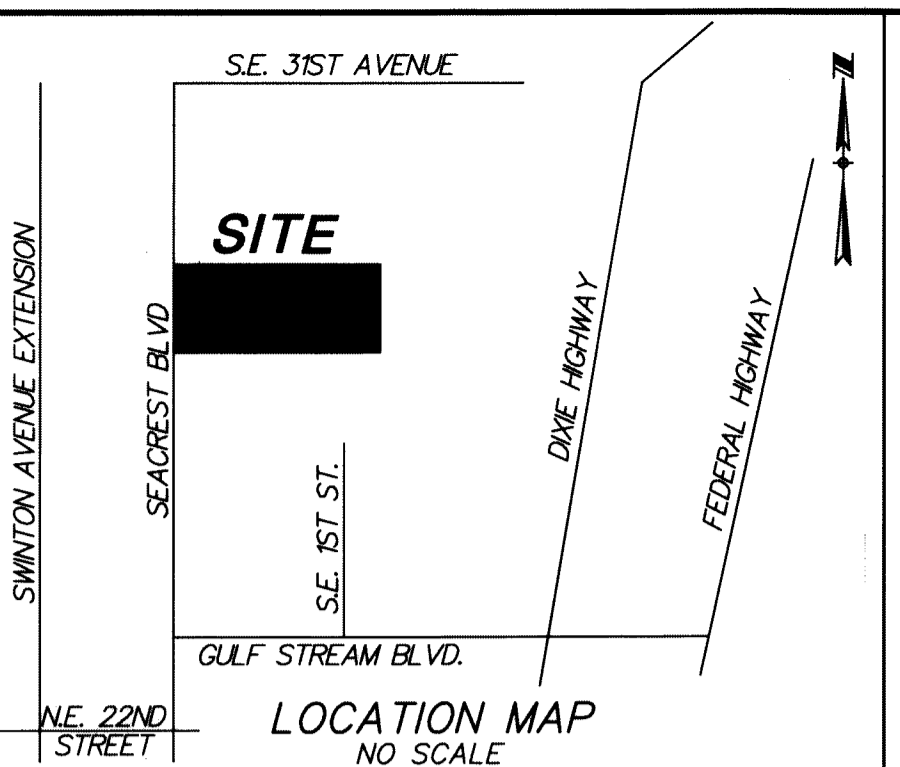


EDEN RIDGE

BEING A REPLAT OF A PORTION OF THE NORTH HALF (N.1.2) OF THE NORTH HALF (N.1/2) OF THE NORTHEAST QUARTER (N.E.1/4) OF THE SOUTHWEST QUARTER (S.W.1/4) OF THE NORTHWEST QUARTER (N.W.1/4) OF SECTION 4, TOWNSHIP 46 SOUTH, RANGE 43 EAST, CITY OF BOYNTON BEACH, PALM BEACH COUNTY, FLORIDA.

THIS INSTRUMENT WAS PREPARED BY PAUL D. ENGLE, IN THE OFFICE OF O'BRIEN, SUITER & O'BRIEN, INC., 955 N.W. 17TH AVENUE, SUITE K-1, DELRAY BEACH, FLORIDA 33445 (561) 276-4501

LEGEND:
 CL = CENTERLINE
 P.R.M. = PERMANENT REFERENCE MONUMENT (4"x4" CONCRETE MONUMENT STAMPED 'PRM LB353') UNLESS STATED OTHERWISE
 SECTION 4/46/43 = SECTION 4, TOWNSHIP 46 SOUTH, RANGE 43 EAST
 L.B. = LICENSED BUSINESS



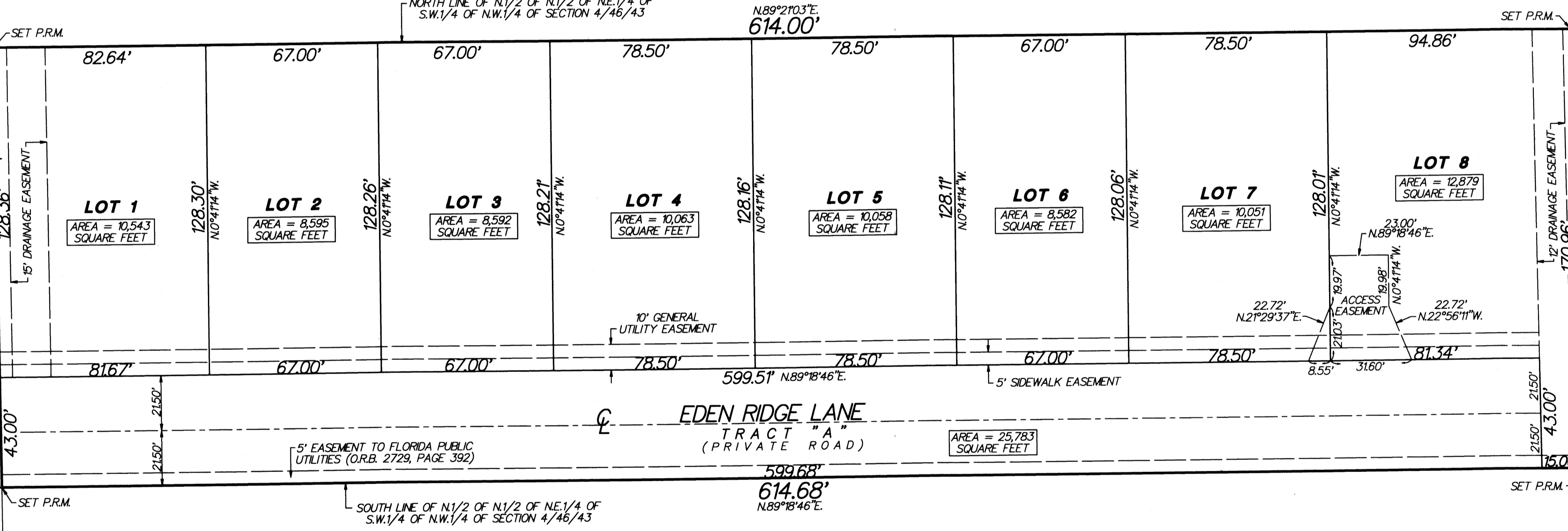
N.W. CORNER OF SECTION 4/46/43 (CALCULATED POSITION)

WEST LINE OF SECTION 4/46/43
 N174.52° W 1374.52'

N89°21'03"E 654.00'

N89°21'03"E 43.00'

SEACREST BOULEVARD
 80' RIGHT OF WAY AS SHOWN ON PALM BEACH COUNTY RIGHT OF WAY MAP DRAWING NO. 3-75-321 R/W CIRCA 1977
 N170°14' W 171.36'
 WEST LINE OF N1/2 OF N1/2 OF NE1/4 OF SW1/4 OF NW1/4 OF SECTION 4/46/43
 N170°14' W 171.36'
 5' LANDSCAPE BUFFER EASEMENT
 15' DRAINAGE EASEMENT



GULFSTREAM BOULEVARD
 1201.5'

EAST LINE OF N1/2 OF N1/2 OF NE1/4 OF SW1/4 OF NW1/4 OF SECTION 4/46/43
 N172°09' W 170.96'
 15' DRAINAGE EASEMENT
 3' LANDSCAPE BUFFER EASEMENT

SEACREST SCRUB NATURAL AREA
 #3400 SOUTH SEACREST BOULEVARD
 OWNER: PALM BEACH COUNTY
 NOT PLATTED