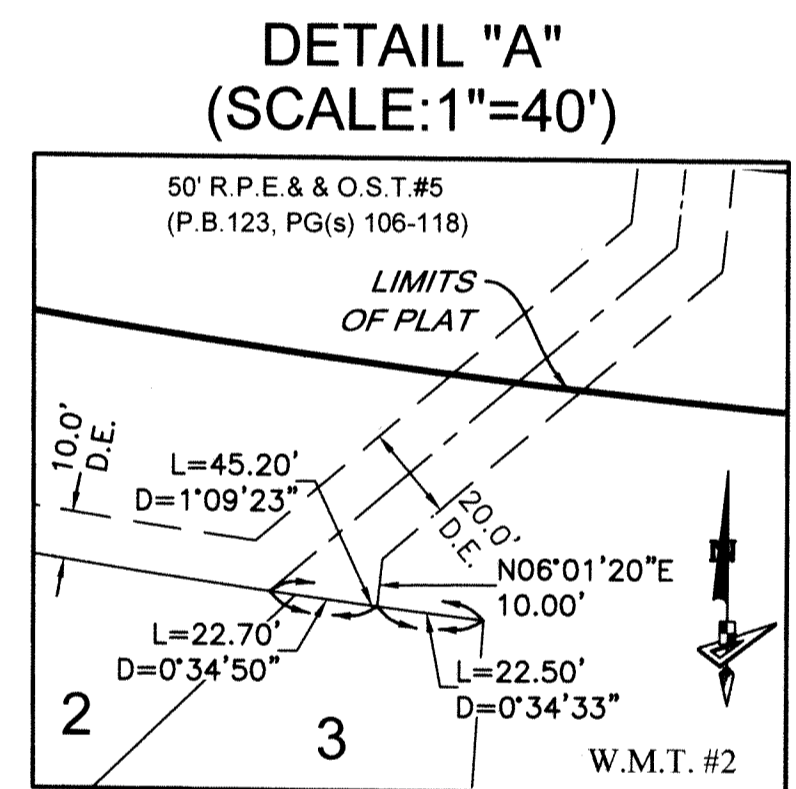
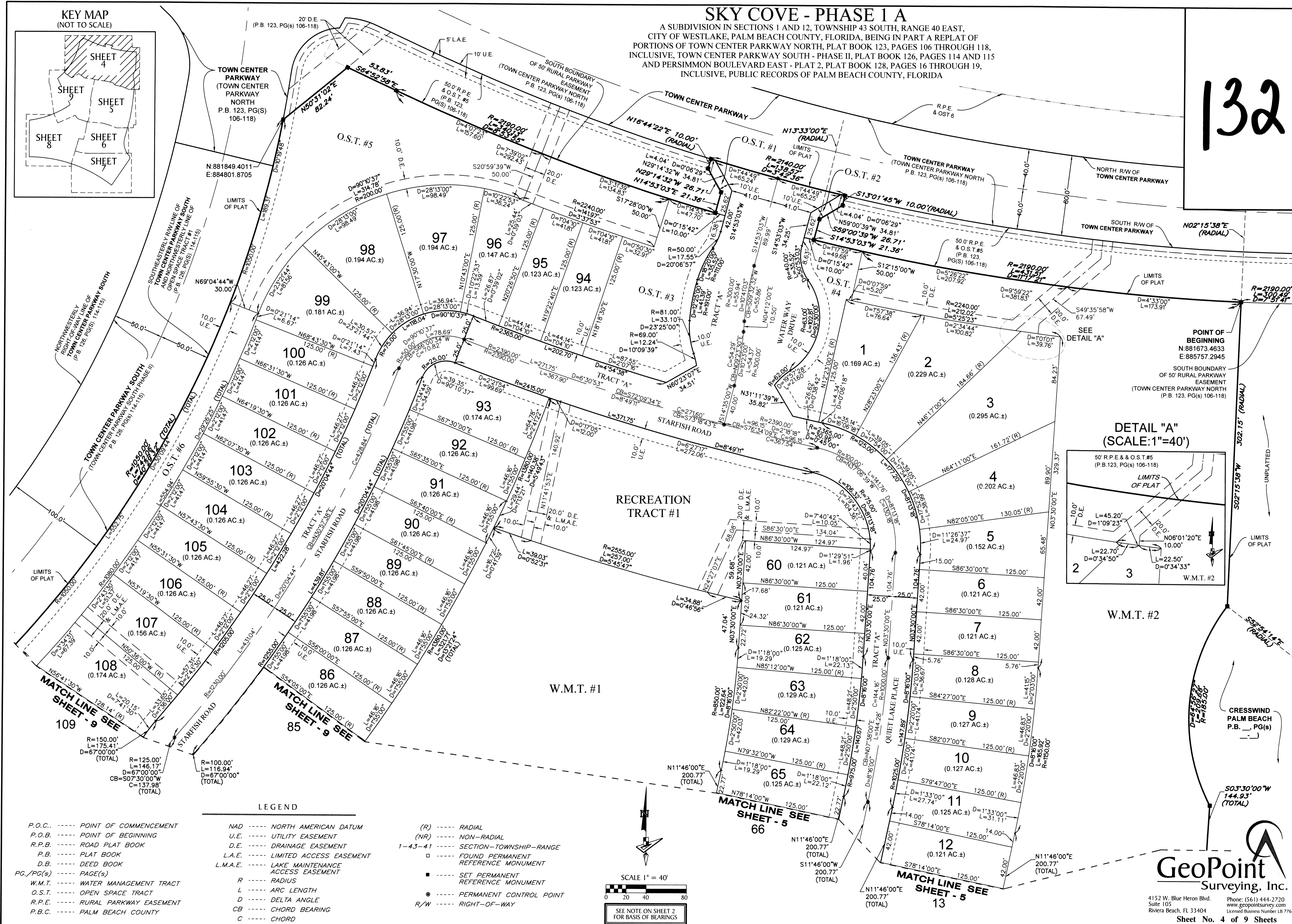
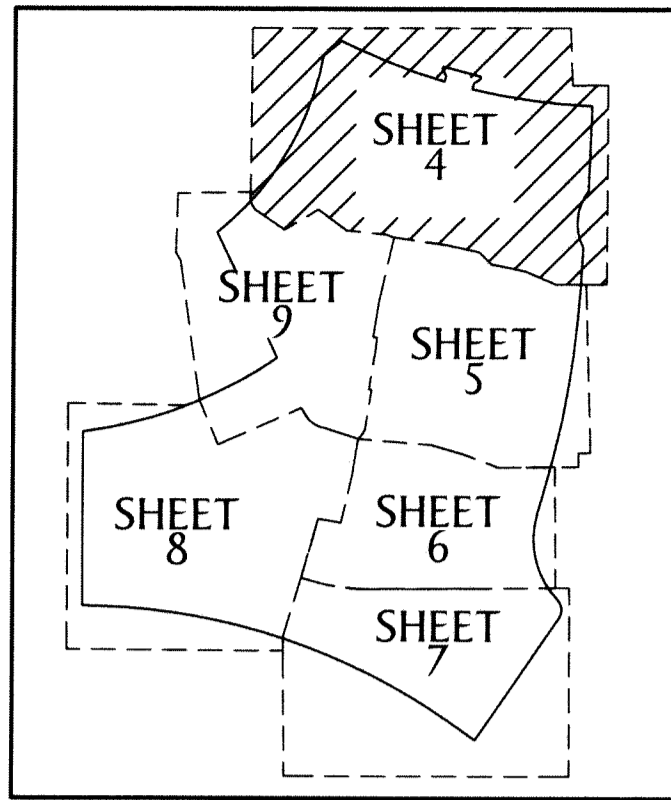


SKY COVE - PHASE 1 A

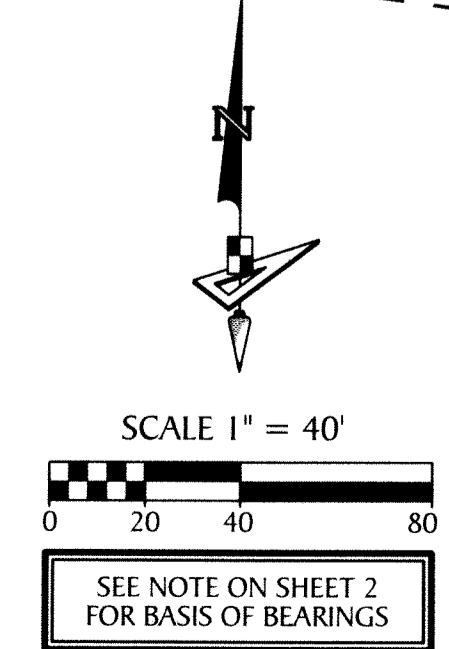
A SUBDIVISION IN SECTIONS 1 AND 12, TOWNSHIP 43 SOUTH, RANGE 40 EAST, CITY OF WESTLAKE, PALM BEACH COUNTY, FLORIDA, BEING IN PART A REPLAT OF PORTIONS OF TOWN CENTER PARKWAY NORTH, PLAT BOOK 123, PAGES 106 THROUGH 118, INCLUSIVE, TOWN CENTER PARKWAY SOUTH - PHASE II, PLAT BOOK 126, PAGES 114 AND 115 AND PERSIMMON BOULEVARD EAST - PLAT 2, PLAT BOOK 128, PAGES 16 THROUGH 19, INCLUSIVE, PUBLIC RECORDS OF PALM BEACH COUNTY, FLORIDA

132

KEY MAP (NOT TO SCALE)



LEGEND	
P.O.C. POINT OF COMMENCEMENT	NAD NORTH AMERICAN DATUM
P.O.B. POINT OF BEGINNING	U.E. UTILITY EASEMENT
R.P.B. ROAD PLAT BOOK	D.E. DRAINAGE EASEMENT
P.B. PLAT BOOK	L.A.E. LIMITED ACCESS EASEMENT
D.B. DEED BOOK	L.M.A.E. LAKE MAINTENANCE ACCESS EASEMENT
PG./PG(S) PAGE(S)	R RADIUS
W.M.T. WATER MANAGEMENT TRACT	L ARC LENGTH
O.S.T. OPEN SPACE TRACT	D DELTA ANGLE
R.P.E. RURAL PARKWAY EASEMENT	CB CHORD BEARING
P.B.C. PALM BEACH COUNTY	C CHORD
(R) RADIAL	(NR) NON-RADIAL
1-43-41 SECTION-TOWNSHIP-RANGE	□ FOUND PERMANENT REFERENCE MONUMENT
■ SET PERMANENT REFERENCE MONUMENT	● PERMANENT CONTROL POINT
R/W RIGHT-OF-WAY	



GeoPoint
Surveying, Inc.

4152 W. Blue Heron Blvd.
Suite 105
Riviera Beach, FL 33404

Phone: (561) 444-2720
www.geopointsurvey.com
Licensed Business Number LB 7768

Sheet No. 4 of 9 Sheets