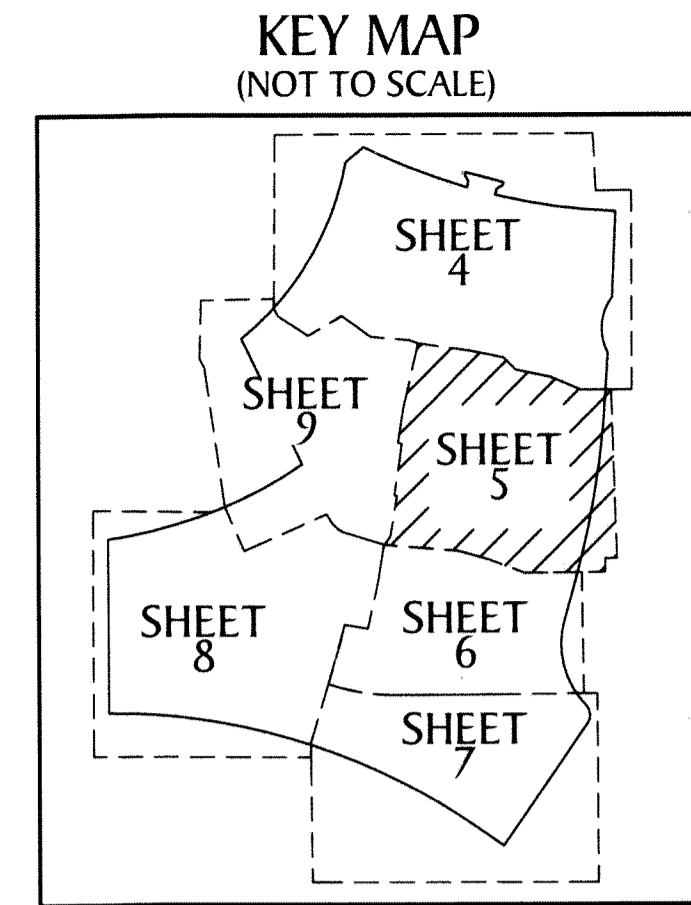
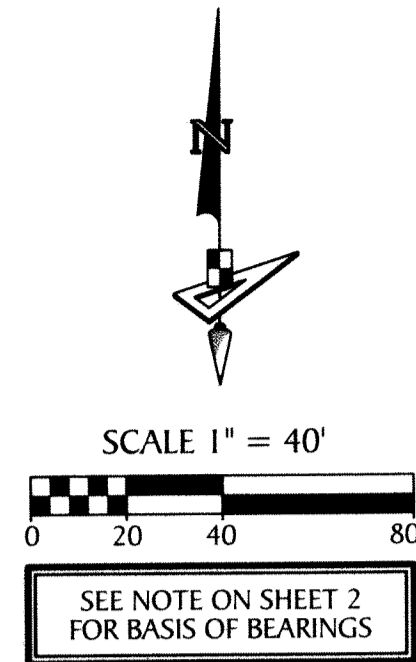


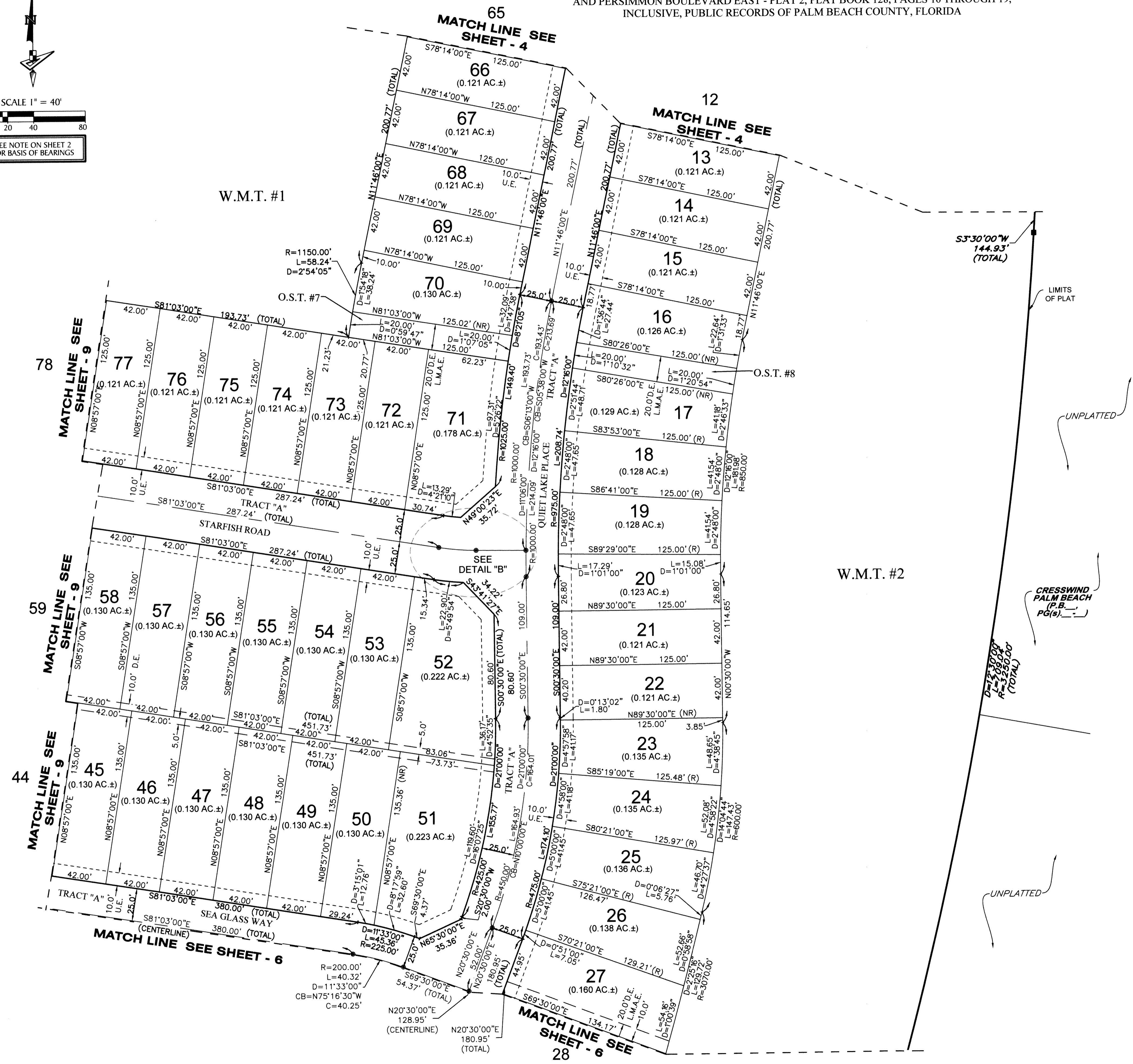
SKY COVE - PHASE 1 A

A SUBDIVISION IN SECTIONS 1 AND 12, TOWNSHIP 43 SOUTH, RANGE 40 EAST, CITY OF WESTLAKE, PALM BEACH COUNTY, FLORIDA, BEING IN PART A REPLAT OF PORTIONS OF TOWN CENTER PARKWAY NORTH, PLAT BOOK 123, PAGES 106 THROUGH 118, INCLUSIVE, TOWN CENTER PARKWAY SOUTH - PHASE II, PLAT BOOK 126, PAGES 114 AND 115, AND PERSIMMON BOULEVARD EAST - PLAT 2, PLAT BOOK 128, PAGES 16 THROUGH 19, INCLUSIVE, PUBLIC RECORDS OF PALM BEACH COUNTY, FLORIDA



133

SCALE 1" = 40'
0 20 40 80
SEE NOTE ON SHEET 2 FOR BASIS OF BEARINGS



- LEGEND**
- P.B. ----- PLAT BOOK
 - D.B. ----- DEED BOOK
 - R.P.B. ----- ROAD PLAT BOOK
 - PG./PG(S) ----- PAGE(S)
 - W.M.T. ----- WATER MANAGEMENT TRACT
 - O.S.T. ----- OPEN SPACE TRACT
 - R.P.E. ----- RURAL PARKWAY EASEMENT
 - P.B.C. ----- PALM BEACH COUNTY
 - NAD ----- NORTH AMERICAN DATUM
 - U.E. ----- UTILITY EASEMENT
 - D.E. ----- DRAINAGE EASEMENT
 - L.A.E. ----- LIMITED ACCESS EASEMENT
 - L.M.A.E. ----- LAKE MAINTENANCE ACCESS EASEMENT
 - R ----- RADIUS
 - L ----- ARC LENGTH
 - D ----- DELTA ANGLE
 - CB ----- CHORD BEARING
 - C ----- CHORD
 - (R) ----- RADIAL
 - (NR) ----- NON-RADIAL
 - 1-43-41 ----- SECTION-TOWNSHIP-RANGE
 - ----- FOUND PERMANENT REFERENCE MONUMENT
 - ----- SET PERMANENT REFERENCE MONUMENT
 - ----- PERMANENT CONTROL POINT
 - R/W ----- RIGHT-OF-WAY

