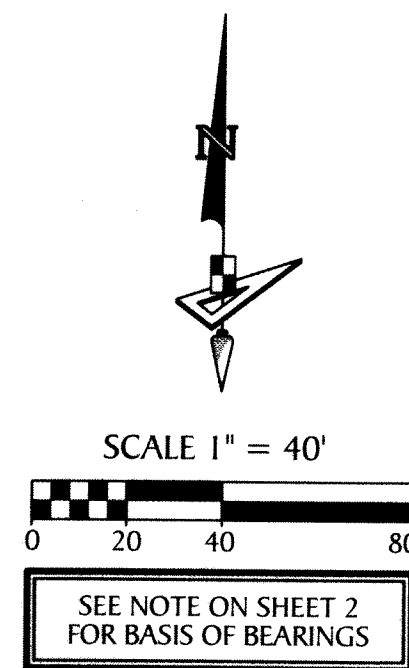
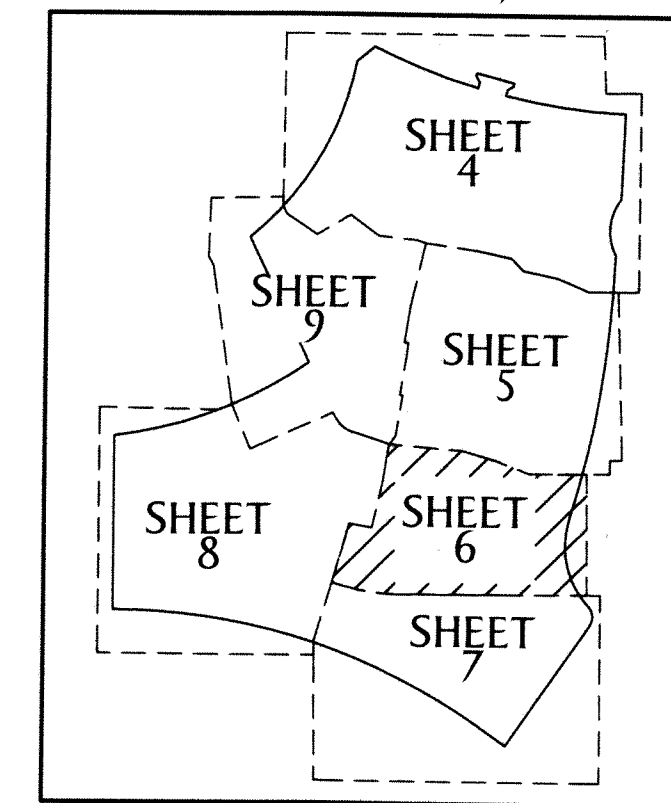


SKY COVE - PHASE 1 A

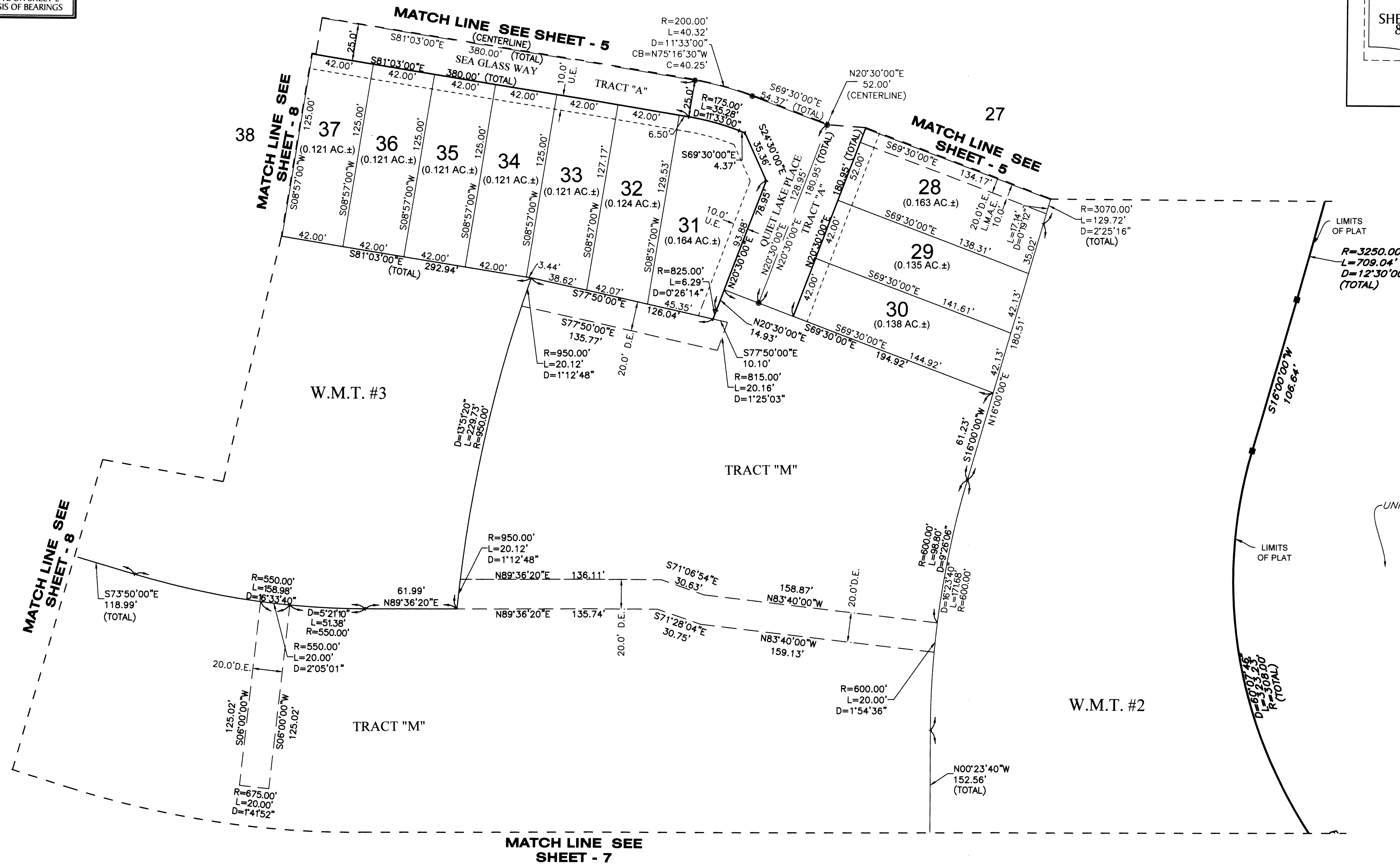
A SUBDIVISION IN SECTIONS 1 AND 12, TOWNSHIP 43 SOUTH, RANGE 40 EAST, CITY OF WESTLAKE, PALM BEACH COUNTY, FLORIDA, BEING IN PART A REPLAT OF PORTIONS OF TOWN CENTER PARKWAY NORTH, PLAT BOOK 123, PAGES 106 THROUGH 118, INCLUSIVE, TOWN CENTER PARKWAY SOUTH - PHASE II, PLAT BOOK 126, PAGES 114 AND 115 AND PERSIMMON BOULEVARD EAST - PLAT 2, PLAT BOOK 128, PAGES 16 THROUGH 19, INCLUSIVE, PUBLIC RECORDS OF PALM BEACH COUNTY, FLORIDA



KEY MAP
(NOT TO SCALE)



134



LEGEND

- P.B. ----- PLAT BOOK
- D.B. ----- DEED BOOK
- R.P.B. ----- ROAD PLAT BOOK
- PG./PG(S) ----- PAGE(S)
- W.M.T. ----- WATER MANAGEMENT TRACT
- O.S.T. ----- OPEN SPACE TRACT
- R.P.E. ----- RURAL PARKWAY EASEMENT
- P.B.C. ----- PALM BEACH COUNTY
- NAD ----- NORTH AMERICAN DATUM
- U.E. ----- UTILITY EASEMENT
- D.E. ----- DRAINAGE EASEMENT
- L.A.E. ----- LIMITED ACCESS EASEMENT
- L.M.A.E. ----- LAKE MAINTENANCE ACCESS EASEMENT
- R ----- RADIUS
- L ----- ARC LENGTH
- D ----- DELTA ANGLE
- CB ----- CHORD BEARING
- C ----- CHORD
- (R) ----- RADIAL
- (NR) ----- NON-RADIAL
- 1-43-41 ----- SECTION-TOWNSHIP-RANGE
- ----- FOUND PERMANENT REFERENCE MONUMENT
- ----- SET PERMANENT REFERENCE MONUMENT
- ----- PERMANENT CONTROL POINT
- R/W ----- RIGHT-OF-WAY