

THIS INSTRUMENT PREPARED BY
 DAVID P. LINDLEY
 OF
CAULFIELD and WHEELER, INC.
 SURVEYORS - ENGINEERS - PLANNERS
 7900 GLADES ROAD, SUITE 100
 BOCA RATON, FLORIDA 33434 - (561)392-1991

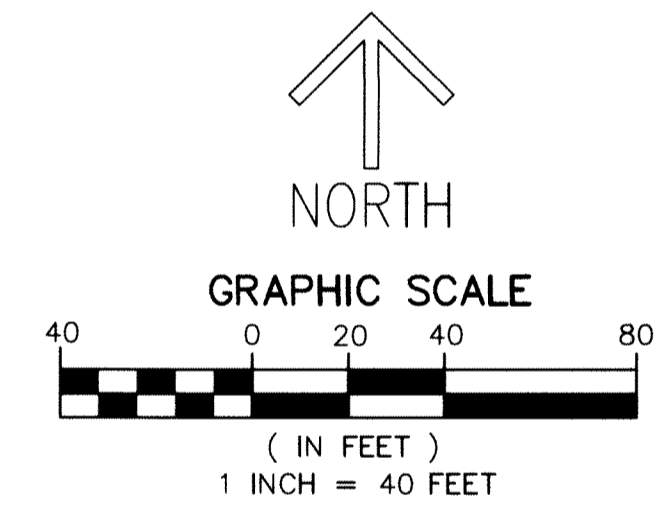
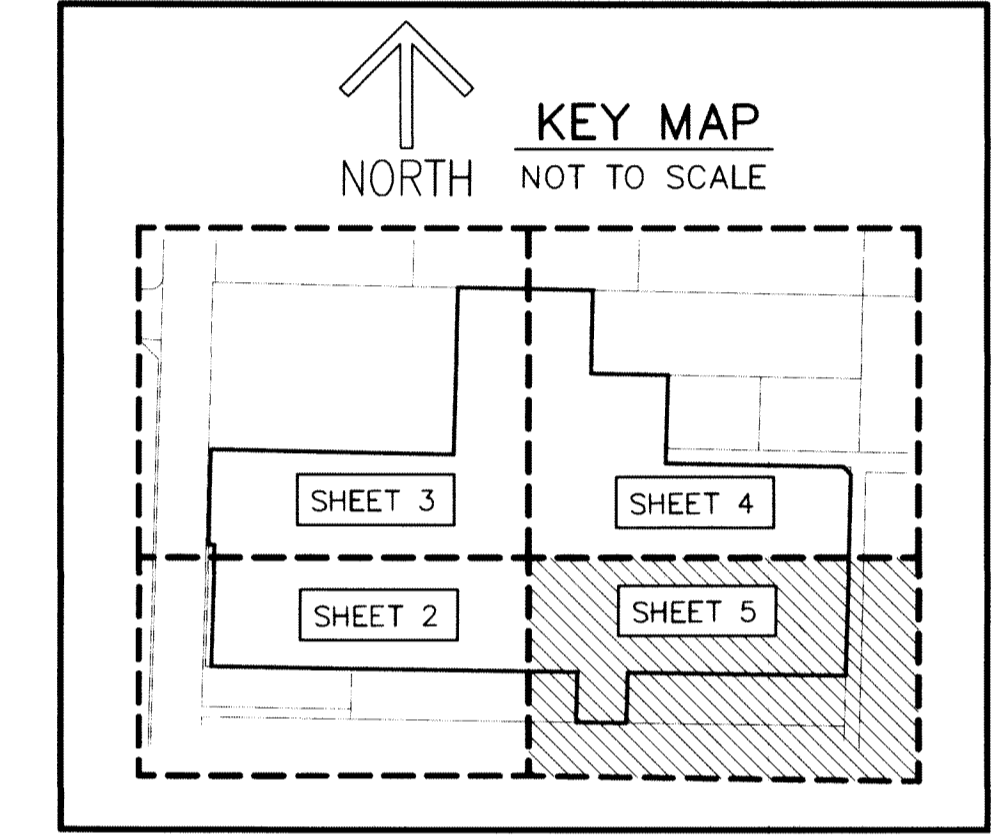
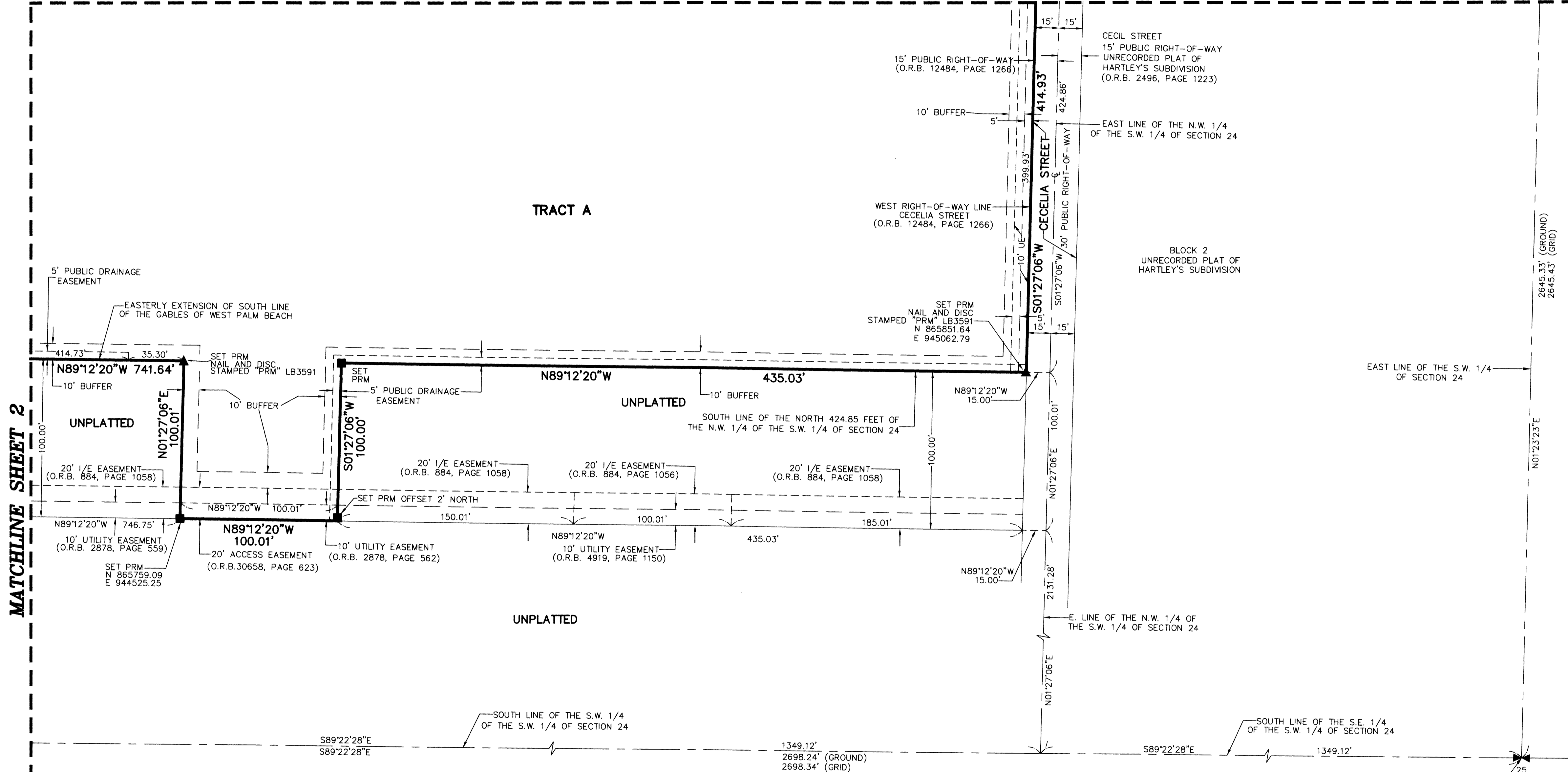
HAVERHILL COMMONS PUD

BEING A REPLAT OF A PORTION OF THE GABLES OF WEST PALM BEACH,
 AS RECORDED IN PLAT BOOK 71, PAGES 63 AND 64 OF THE PUBLIC RECORDS OF PALM BEACH COUNTY, FLORIDA,
 TOGETHER WITH A PORTION OF SECTION 24, TOWNSHIP 43 SOUTH, RANGE 42 EAST, LYING IN PALM BEACH COUNTY, FLORIDA

147

MATCHLINE SHEET 4

SHEET 5 OF 5



NOTES
COORDINATES, BEARINGS AND DISTANCES
 COORDINATES SHOWN ARE GRID
 DATUM = NAD 83 (90 ADJUSTMENT)
 ZONE = FLORIDA EAST
 LINEAR UNIT = US SURVEY FEET
 COORDINATE SYSTEM 1983 STATE PLANE
 TRANSVERSE MERCATOR PROJECTION
 ALL DISTANCES ARE GROUND
 SCALE FACTOR = 1.0000360
 GROUND DISTANCE X SCALE FACTOR = GRID DISTANCE
 BEARINGS AS SHOWN HEREON ARE GRID DATUM,
 NAD 83 (1990 ADJUSTMENT), FLORIDA EAST ZONE.

LEGEND/ABBREVIATIONS

- ⊕ - CENTERLINE
- E - EASTING (WHEN USED WITH COORDINATES)
- FPL - FLORIDA POWER & LIGHT COMPANY
- 1/E - INGRESS AND EGRESS
- LB - LICENSED BUSINESS
- MTE - MASS TRANSIT EASEMENT
- N - NORTHING (WHEN USED WITH COORDINATES)
- PI - POINT OF INTERSECTION
- PUD - PLANNED UNIT DEVELOPMENT
- O.R.B. - OFFICIAL RECORD BOOK
- UE - UTILITY EASEMENT
- (P) - THE GABLES OF WEST PALM BEACH, AS RECORDED IN PLAT BOOK 71, PAGES 63 AND 64
- FNAD - DENOTES FOUND NAIL AND DISK STAMPED "LB#3870"
- PRM - DENOTES PERMANENT REFERENCE MONUMENT 4" x 4" x 24" CONCRETE MONUMENT WITH ALUMINUM DISK STAMPED "C&W PRM LB3591"
- ▲ - DENOTES PERMANENT REFERENCE MONUMENT NAIL AND DISK STAMPED "PRM" LB 3591

SOUTH 1/4 CORNER OF SECTION 24
 TOWNSHIP 43 SOUTH, RANGE 42 EAST
 NO MONUMENT FOUND
 PALM BEACH COUNTY
 PUBLISHED COORDINATES
 N 863606.062
 E 946370.347