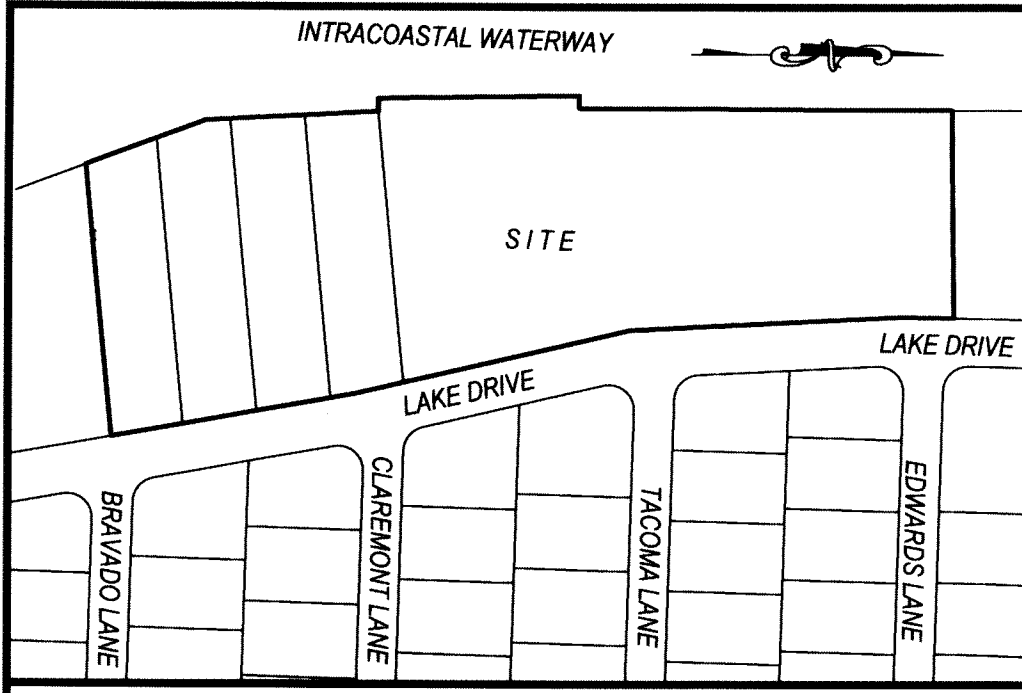


SAILFISH MARINA AND RESORT

BEING A REPLAT OF LOTS 549, 550, 551, 552, 553, 554, 555, 556, 557, 558 AND 559 AND PRIVATE ROAD NO.3, BETWEEN LOTS 554 AND 555, AND PARCEL MARKED "RESERVED" LYING WEST OF LOTS 554 AND 555, PALM BEACH SHORES, ACCORDING TO THE PLAT THEREOF, RECORDED IN PLAT BOOK 23, PAGES 29 THROUGH 32, OF THE PUBLIC RECORDS OF PALM BEACH COUNTY, FLORIDA. SITUATED LYING AND BEING IN SECTIONS 27 & 34, TOWNSHIP 42 SOUTH, RANGE 43 EAST, PALM BEACH SHORES, FLORIDA.

SHEET 2 OF 2

196

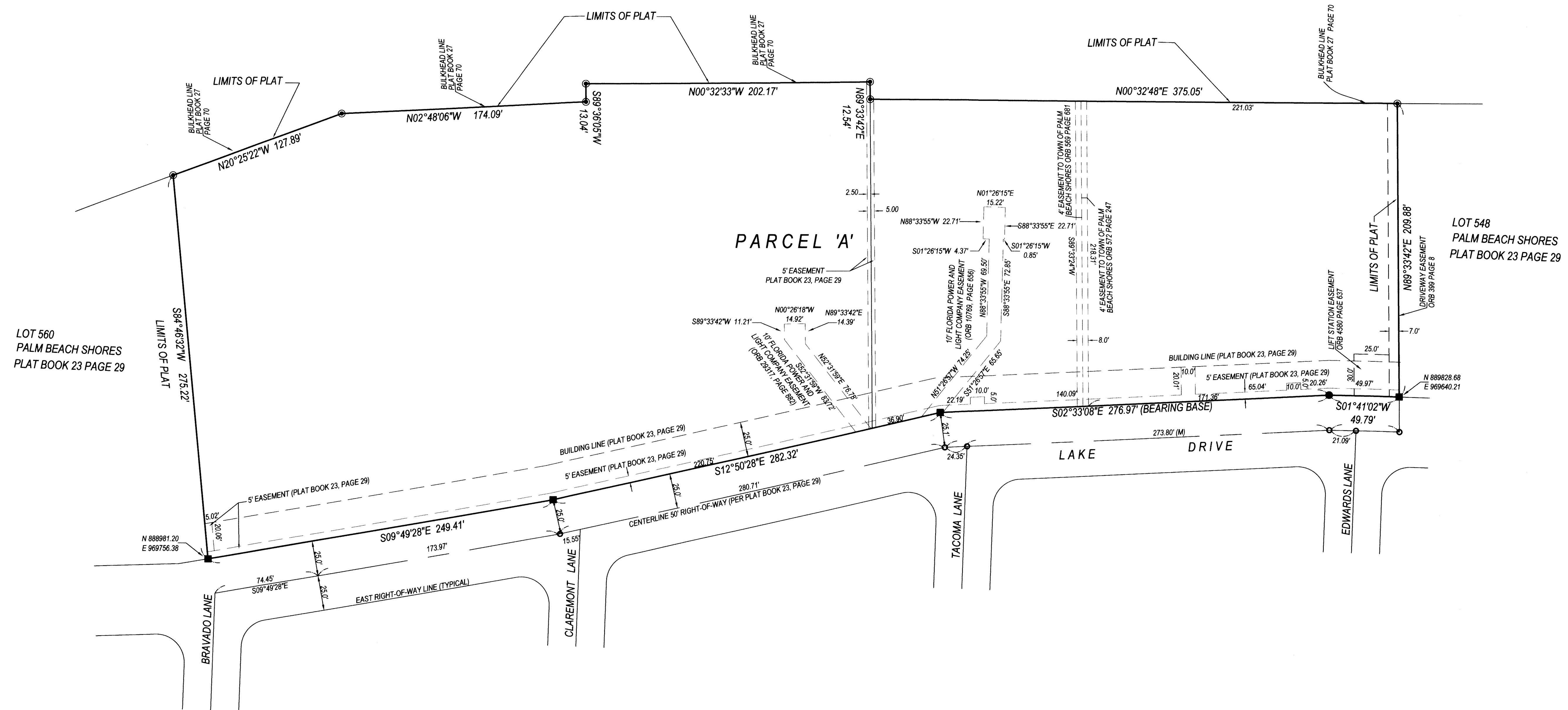


VICINITY SKETCH
not to scale



not to scale

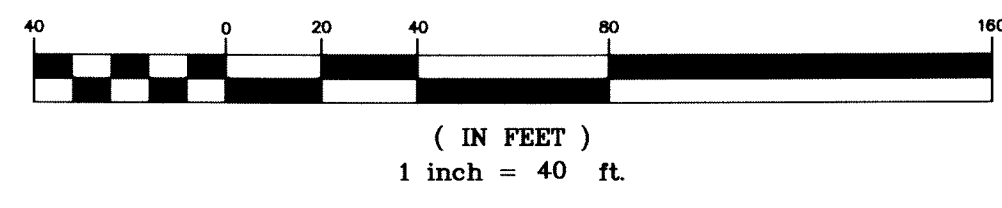
L A K E W O R T H



LOT 560
PALM BEACH SHORES
PLAT BOOK 23 PAGE 29

LOT 548
PALM BEACH SHORES
PLAT BOOK 23 PAGE 29

GRAPHIC SCALE



- LEGEND
- SET 4"x4" CONCRETE MONUMENT AND BRASS DISK *PRM LB 8261*
 - SET NAIL AND DISK *PRM LB 8261*

PM SURVEYING
4546 CAMBRIDGE STREET
WEST PALM BEACH, FL. 33415
(561) 478-7764 FAX 478-1094
VISIT US AT PMSURVEYING.NET
JOB # 18020106