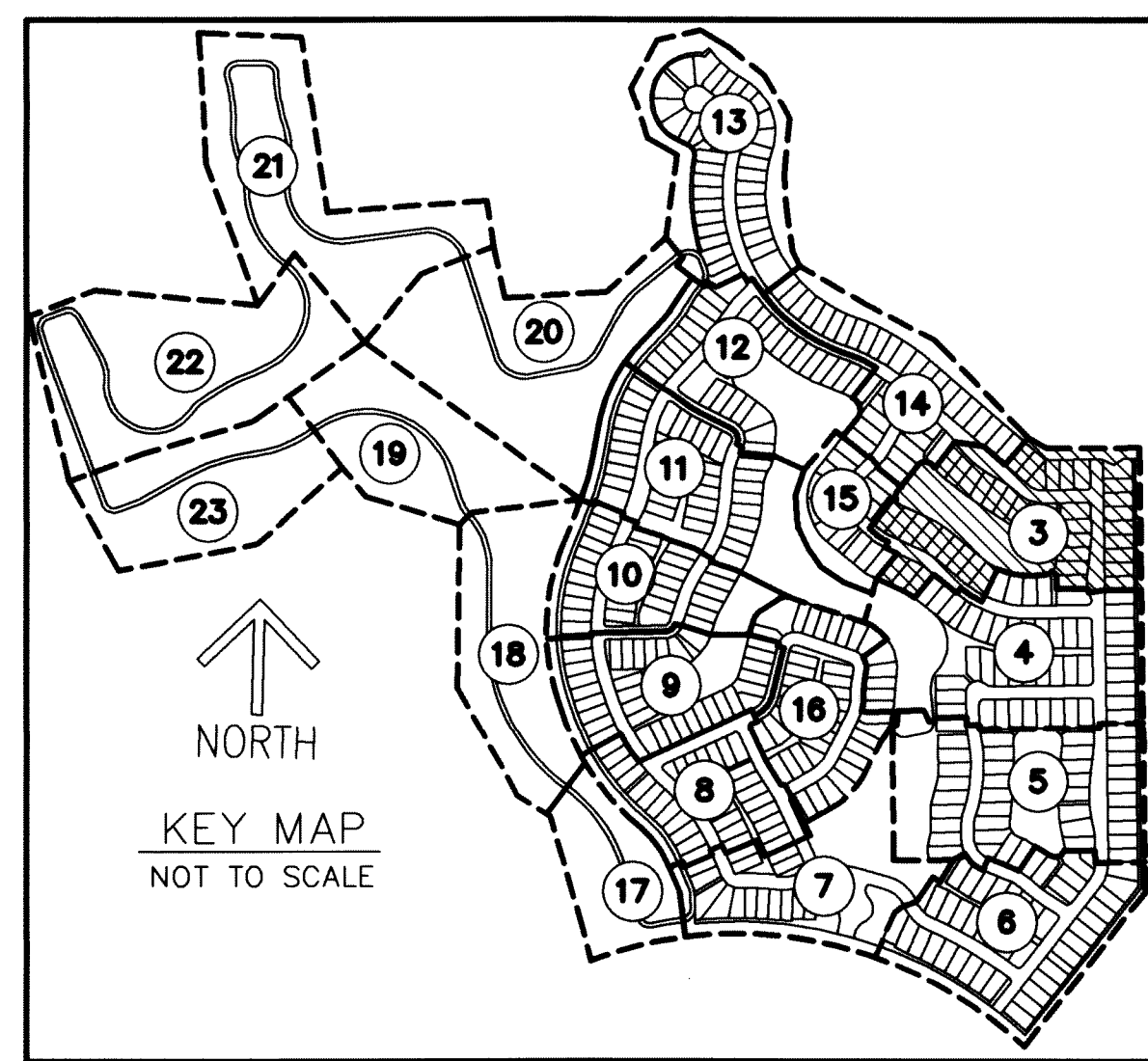


AVENIR SITE PLAN 2 - POD 5

A PLANNED UNIT DEVELOPMENT
 BEING A REPLAT OF A PORTION OF AVENIR, PARCEL "A-2",
 AS RECORDED IN PLAT BOOK 127, PAGES 85 THROUGH 109 OF
 THE PUBLIC RECORDS OF PALM BEACH COUNTY, FLORIDA,
 LYING IN SECTIONS 10 AND 15,
 TOWNSHIP 42 SOUTH, RANGE 41 EAST,
 CITY OF PALM BEACH GARDENS, PALM BEACH COUNTY, FLORIDA.

THIS INSTRUMENT PREPARED BY
 RONNIE L. FURNISS
 OF
CAULFIELD and WHEELER, INC.
 SURVEYORS - ENGINEERS - PLANNERS
 7900 GLADES ROAD, SUITE 100
 BOCA RATON, FLORIDA 33434 - (561)392-1991
 CERTIFICATE OF AUTHORIZATION NO. LB3591

| CURVE # | DELTA | RADIUS | LENGTH | CHORD BEARING | CHORD DISTANCE |
|---------|------------|---------|--------|---------------|----------------|
| C23 | 14°50'19" | 300.00' | 77.70' | N57° 56' 07"W | 77.48' |
| C24 | 19°27'39" | 273.00' | 92.73' | S55° 37' 27"E | 92.28' |
| C59 | 102°59'55" | 38.00' | 68.31' | S13° 06' 26"E | 59.48' |
| C60 | 102°29'31" | 38.00' | 67.98' | S89° 38' 17"W | 59.27' |
| C61 | 97°48'50" | 38.00' | 64.87' | N41° 51' 47"W | 57.28' |
| C62 | 82°11'10" | 58.00' | 83.20' | N48° 08' 13"E | 76.24' |
| C63 | 13°30'03" | 250.00' | 58.91' | S45° 52' 00"E | 58.77' |
| C64 | 3°58'53" | 600.00' | 41.69' | S54° 36' 27"E | 41.68' |



3

SHEET 3 OF 23

SOUTH LINE OF CONSERVATION TRACT C-1 AVENIR (PB 127, PG. 85)

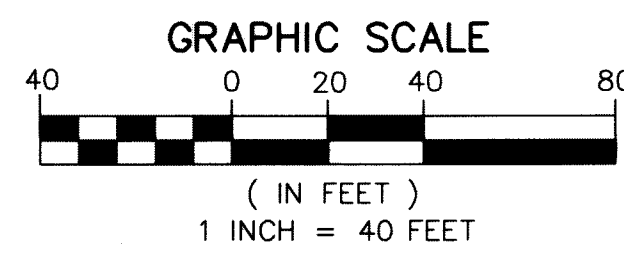
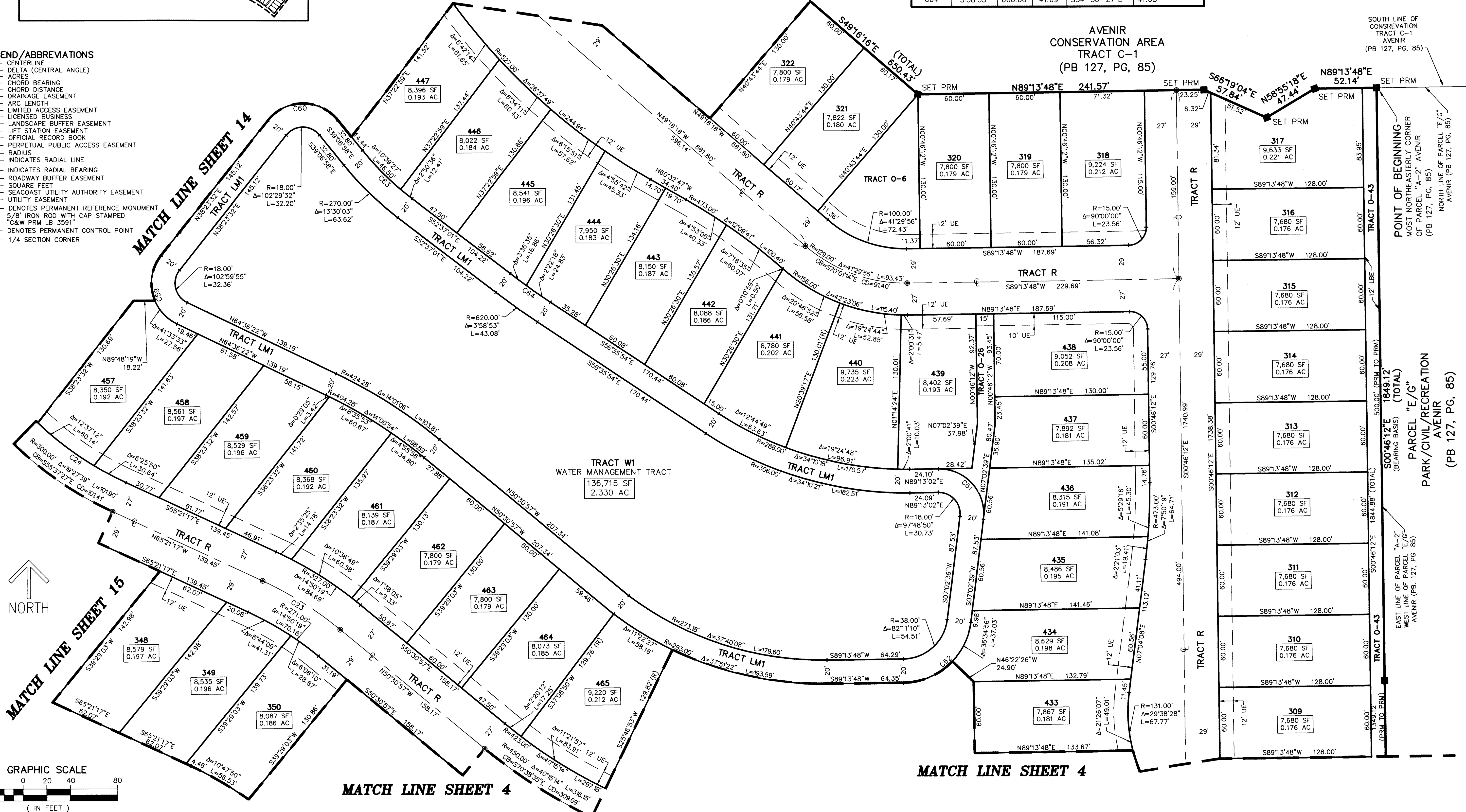
POINT OF BEGINNING MOST NORTHEASTLY CORNER OF PARCEL "A-2" AVENIR (PB 127, PG. 85)

PARCEL "E/G" AVENIR (PB 127, PG. 85)

EAST LINE OF PARCEL "A-2" WEST LINE OF PARCEL "E/G" AVENIR (PB 127, PG. 85)

PARK/CIVIL/RECREATION AVENIR (PB 127, PG. 85)

- LEGEND/ABBREVIATIONS**
- CL - CENTERLINE
 - Δ - DELTA (CENTRAL ANGLE)
 - AC - ACRES
 - CB - CHORD BEARING
 - CD - CHORD DISTANCE
 - DE - DRAINAGE EASEMENT
 - L - ARC LENGTH
 - LAE - LIMITED ACCESS EASEMENT
 - LB - LICENSED BUSINESS
 - LBE - LANDSCAPE BUFFER EASEMENT
 - LSE - LIFT STATION EASEMENT
 - O.R.B. - OFFICIAL RECORD BOOK
 - P.P.A.E. - PERPETUAL PUBLIC ACCESS EASEMENT
 - R - RADIUS
 - (R) - INDICATES RADIAL LINE
 - RB - INDICATES RADIAL BEARING
 - RBE - ROADWAY BUFFER EASEMENT
 - SF - SQUARE FEET
 - SUA.E. - SEACOAST UTILITY AUTHORITY EASEMENT
 - UE - UTILITY EASEMENT
 - PRM - DENOTES PERMANENT REFERENCE MONUMENT
 - 5/8" IRON ROD WITH CAP STAMPED "C&W PRM LB 3591"
 - CP - DENOTES PERMANENT CONTROL POINT
 - 1/4 SECTION CORNER



MATCH LINE SHEET 4

MATCH LINE SHEET 4

NORTH

MATCH LINE SHEET 15

MATCH LINE SHEET 14

AVENIR CONSERVATION AREA TRACT C-1 (PB 127, PG. 85)

TRACT W1 WATER MANAGEMENT TRACT 136,715 SF 2.330 AC

TRACT O-6 (TOTAL) 650.43

500.00' (PRM TO FRM)

1849.12' (TOTAL BEARING BASIS)

PARCEL "E/G" AVENIR (PB 127, PG. 85)

500.00' (PRM TO FRM)

1844.88' (TOTAL BEARING BASIS)

PARCEL "E/G" AVENIR (PB 127, PG. 85)

500.00' (PRM TO FRM)

1844.88' (TOTAL BEARING BASIS)

PARCEL "E/G" AVENIR (PB 127, PG. 85)

500.00' (PRM TO FRM)

1844.88' (TOTAL BEARING BASIS)

PARCEL "E/G" AVENIR (PB 127, PG. 85)

500.00' (PRM TO FRM)

1844.88' (TOTAL BEARING BASIS)