

BILLS PLAT

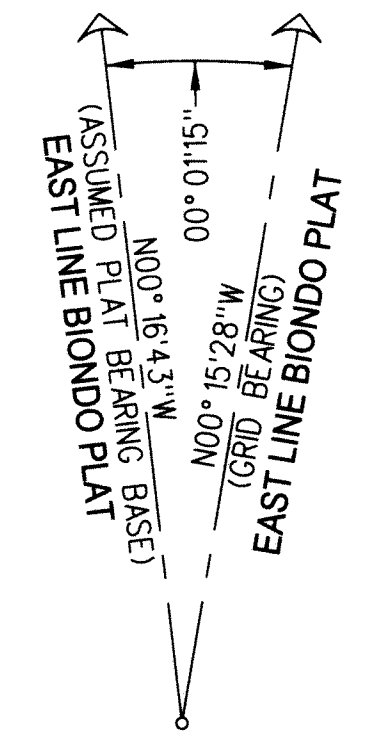
BEING A PORTION OF LOT 1 ACCORDING TO THE AFFIDAVIT OF WAIVER, RECORDED IN OFFICIAL RECORDS BOOK 10972, PAGE 1778, PUBLIC RECORDS OF PALM BEACH COUNTY, FLORIDA, LYING IN GOVERNMENT LOTS 4 AND 5, SECTION 35, TOWNSHIP 40 SOUTH, RANGE 42 EAST, PALM BEACH COUNTY, FLORIDA

PLAT POSITION AND ORIENTATION:
 COORDINATES SHOWN HEREON ARE GRID AND ARE BASED ON THE NORTH AMERICAN DATUM OF 1983, 1990 ADJUSTMENT (NAD83/90), FLORIDA STATE PLANE TRANSVERSE MERCATOR PROJECTION.
 DISTANCES SHOWN HEREON ARE GROUND DISTANCES UNLESS OTHERWISE NOTED.
 DATUM = NORTH AMERICAN DATUM OF 1983 (NAD83), 1990 ADJUSTMENT
 ZONE = FLORIDA EAST
 LINEAR UNITS = US SURVEY FOOT
 SCALE FACTOR = 1.000034161
 GROUND DISTANCES X SCALE FACTOR = GRID DISTANCE

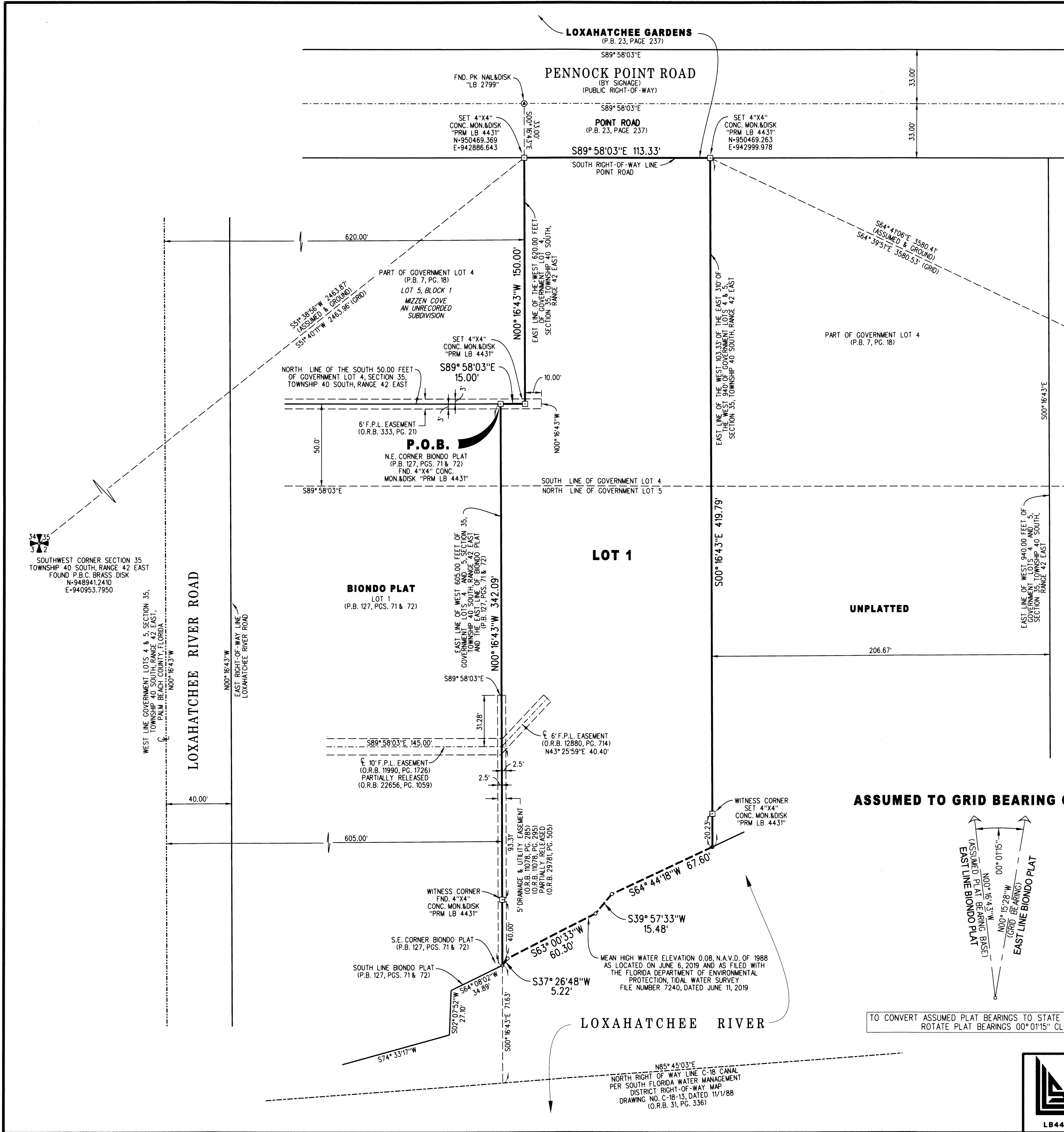
ABBREVIATIONS:

CONC.	= CONCRETE	E	= EAST
F.P.L.	= FLORIDA POWER & LIGHT COMPANY	N	= NORTH
FND.	= FOUND	N.E.	= NORTHEAST
LB	= LICENSE BOARD	N.W.	= NORTHWEST
MON.	= MONUMENT	S	= SOUTH
N.A.V.D.	= NATIONAL AMERICAN VERTICAL DATUM	S.E.	= SOUTHWEST
O.R.B.	= OFFICIAL RECORD BOOK	S.W.	= SOUTHWEST
P.B.	= PLAT BOOK	W	= WEST
P.B.C.	= PALM BEACH COUNTY	(C)	= CALCULATE
P.D.B.	= POINT OF BEGINNING	(M)	= MEASURE
P.R.M.	= PERMANENT REFERENCE MONUMENT	℄	= CENTERLINE
P.S.M.	= PROFESSIONAL SURVEYOR AND MAPPER		
PG.	= PAGE		
PGS.	= PAGES		
R/W	= RIGHT OF WAY		

ASSUMED TO GRID BEARING CONVERSION:



TO CONVERT ASSUMED PLAT BEARINGS TO STATE PLANE GRID BEARINGS ROTATE PLAT BEARINGS 00° 01' 15" CLOCKWISE



LIDBERG LAND SURVEYING, INC.
 675 West Indiantown Road, Suite 200,
 Jupiter, Florida 33458 TEL. 561-746-8454

CAD.	K:\JUST \ 354042 \ 96-647-306 \ 96-647-306.DGN		
REF.			
FLD.	FB.	PG.	JOB 96-647-306
OFF.	R.J.W.		DATE 04/24/2019
CKD.	D.C.L.	SHEET 2 OF 2	DWG. 096-647P