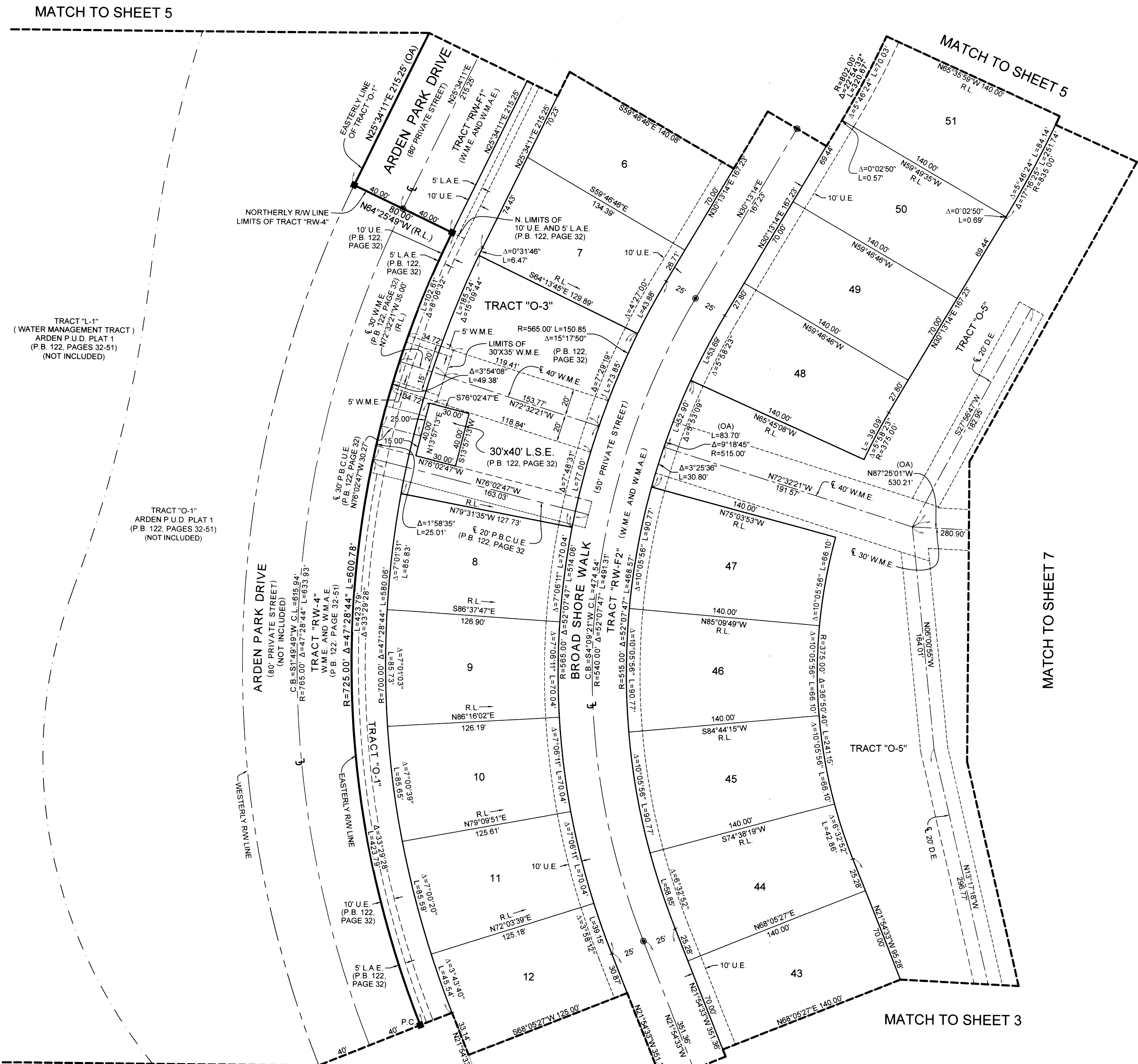


# ARDEN P.U.D. POD F WEST

BEING A REPLAT OF A PORTION OF TRACT "FD", ARDEN P.U.D. PLAT 1, AS RECORDED IN PLAT BOOK 122, PAGES 32 THROUGH 51, PUBLIC RECORDS OF PALM BEACH COUNTY, FLORIDA, AND LYING IN SECTION 28, TOWNSHIP 43 SOUTH, RANGE 40 EAST, PALM BEACH COUNTY, FLORIDA.

31



MATCH TO SHEET 5

MATCH TO SHEET 5

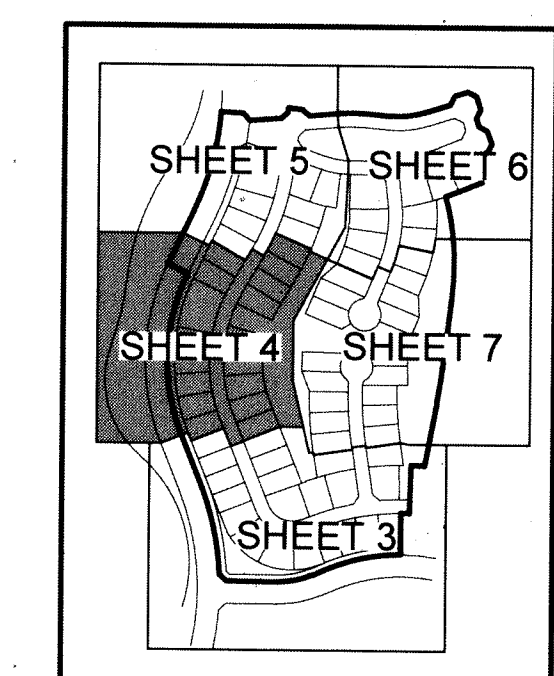
TRACT "L-1"  
(WATER MANAGEMENT TRACT)  
ARDEN P.U.D. PLAT 1  
(P.B. 122, PAGES 32-51)  
(NOT INCLUDED)

TRACT "O-1"  
ARDEN P.U.D. PLAT 1  
(P.B. 122, PAGES 32-51)  
(NOT INCLUDED)

MATCH TO SHEET 7

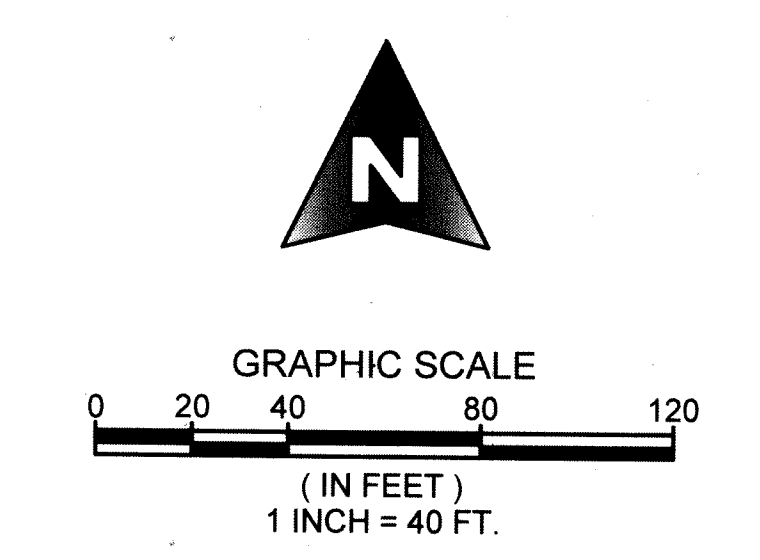
MATCH TO SHEET 3

MATCH TO SHEET 3

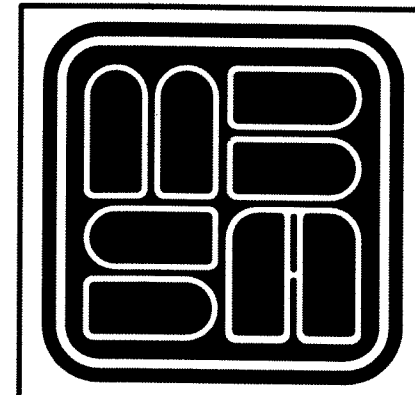


KEY MAP  
NOT TO SCALE

COORDINATE NOTE:  
STATE PLANE COORDINATES SHOWN ARE GRID DATUM, NAD 83 1990 ADJUSTMENT, FLORIDA EAST ZONE, COORDINATE SYSTEM 1983 STATE PLANE, TRANSVERSE MERCATOR PROJECTION  
LINEAR UNIT = US SURVEY FEET  
ALL DISTANCES ARE GROUND  
SCALE FACTOR = 0.99999219  
GROUND DISTANCE X SCALE FACTOR = GRID DISTANCE  
BEARINGS AS SHOWN HEREON ARE GRID DATUM, NAD 83 1990 ADJUSTMENT, FLORIDA EAST ZONE.



SHEET 4 OF 7



**MICHAEL B. SCHORAH & ASSOCIATES, INC.**  
1850 FOREST HILL BLVD., SUITE 206  
WEST PALM BEACH, FLORIDA 33406  
EB# 2438 TEL. (561) 968-0080 FAX. (561) 642-9726 LB# 2438

ARDEN P.U.D. POD F WEST