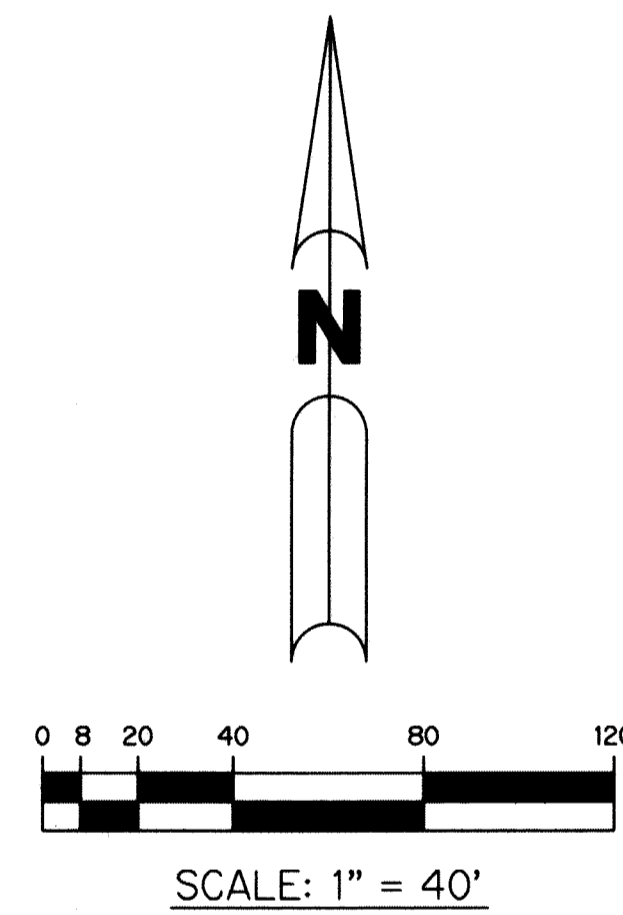
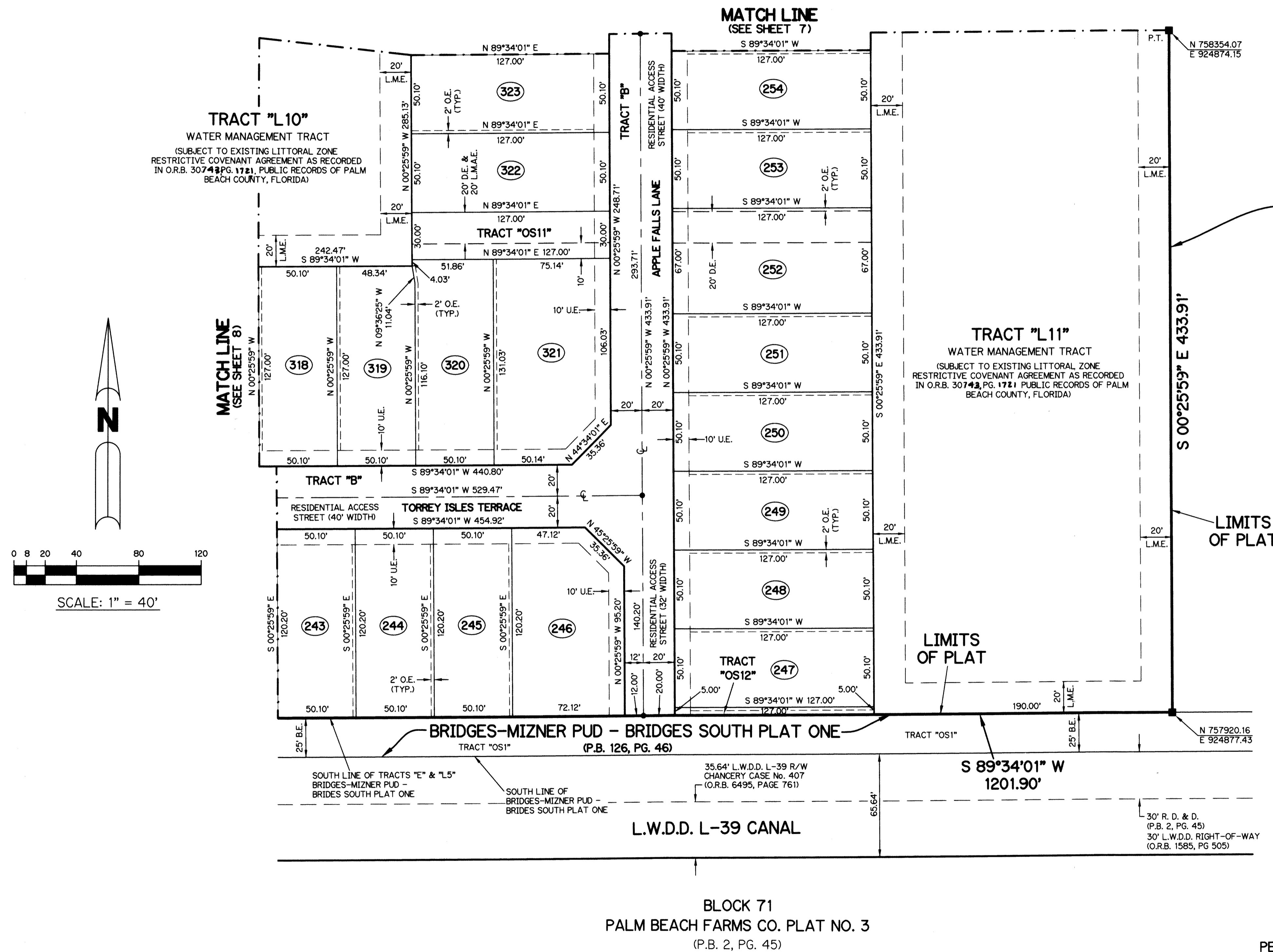


BRIDGES-MIZNER PUD - BRIDGES SOUTH PLAT THREE

BEING A REPLAT OF ALL OF TRACTS "L5" AND "OS3" AND A PORTION OF TRACT "E", BRIDGES-MIZNER PUD - BRIDGES SOUTH PLAT ONE, AS RECORDED IN PLAT BOOK 126, PAGES 46 THROUGH 62 OF THE PUBLIC RECORDS OF PALM BEACH COUNTY, FLORIDA, LYING IN SECTION 32, TOWNSHIP 46 SOUTH, RANGE 42 EAST, PALM BEACH COUNTY, FLORIDA

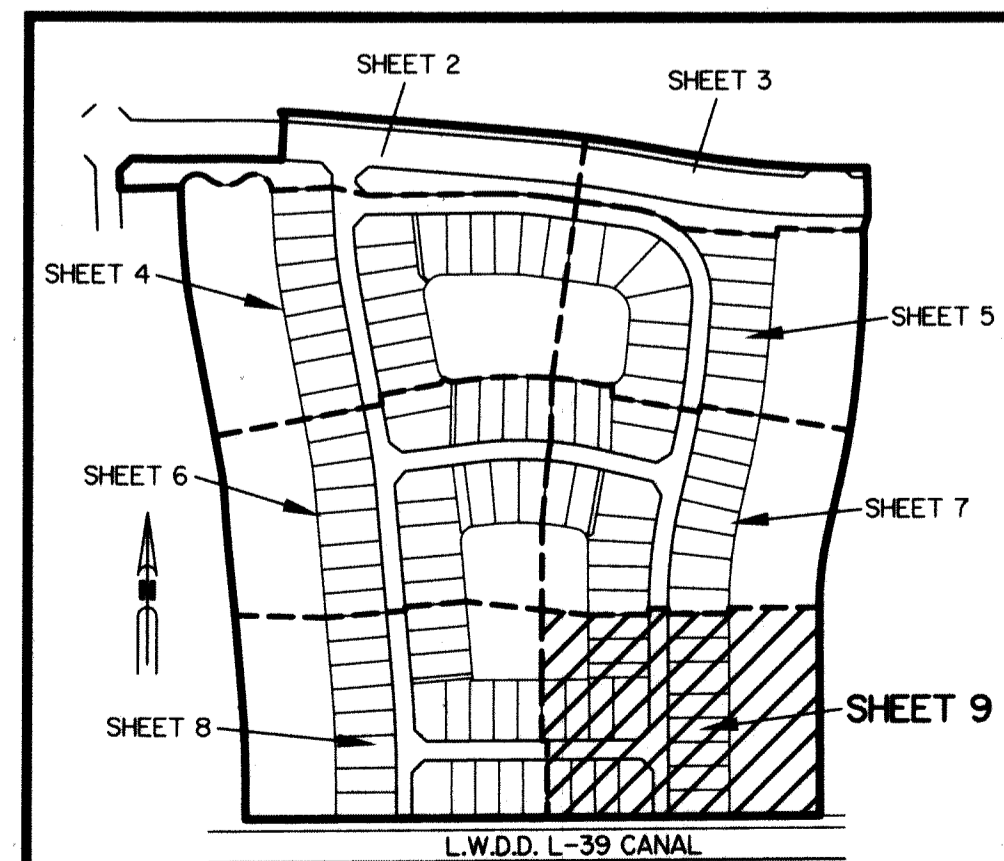
SHEET 9 OF 9

43



- LEGEND:**
- - SET PERMANENT REFERENCE MONUMENT
 - 4"x4" CONCRETE MONUMENT WITH 1.5" DISK STAMPED L.B. #7741 (UNLESS OTHERWISE NOTED)
 - - FOUND PERMANENT REFERENCE MONUMENT
 - 4"x4" CONCRETE MONUMENT WITH 1.5" DISK STAMPED L.B. #7741
 - - SET PERMANENT CONTROL POINT
 - NAIL WITH 1.25" DISK STAMPED L.B. #7741
 - - FOUND PERMANENT CONTROL POINT
 - NAIL WITH 1.25" DISK STAMPED L.B. #7741
 - AGR - AGRICULTURAL
 - Δ - DELTA ANGLE
 - B.E. - BUFFER EASEMENT
 - BLK - BLOCK
 - CB - CHORD BEARING
 - CH - CHORD DISTANCE
 - CL - CENTERLINE
 - D.B. - DEED BOOK
 - D.E. - PRIVATE DRAINAGE EASEMENT
 - F.P.L. - FLORIDA POWER & LIGHT
 - L - ARC LENGTH
 - L.A.E. - LIMITED ACCESS EASEMENT
 - L.M.A.E. - LAKE MAINTENANCE ACCESS EASEMENT
 - L.M.E. - LAKE MAINTENANCE EASEMENT
 - L.W.D.D. - LAKE WORTH DRAINAGE DISTRICT
 - N.R. - NON-RADIAL
 - N.T. - NON-TANGENT
 - N.T.S. - NOT TO SCALE
 - O.R.B. - OFFICIAL RECORD BOOK
 - O.E. - MAINTENANCE & ROOF OVERHANG EASEMENT
 - P.B.C.U.E. - PALM BEACH COUNTY UTILITY EASEMENT
 - P.B. - PLAT BOOK
 - P.C. - POINT OF CURVATURE
 - P.C.C. - POINT OF COMPOUND CURVATURE
 - P.C.P. - PERMANENT CONTROL POINT
 - P.D.E. - PUBLIC DRAINAGE EASEMENT
 - PGS. - PAGES
 - P.N.R.I. - POINT OF NON-RADIAL INTERSECTION
 - P.R.I. - POINT OF RADIAL INTERSECTION
 - P.O.B. - POINT OF BEGINNING
 - P.O.C. - POINT OF COMMENCEMENT
 - P.O.I. - POINT OF INTERSECTION
 - P.R.C. - POINT OF REVERSE CURVATURE
 - P.S.M. - PROFESSIONAL SURVEYOR AND MAPPER
 - P.T. - POINT OF TANGENCY
 - PUD - PLANNED UNIT DEVELOPMENT
 - R - RADIUS
 - RAD - RADIAL
 - R/W - RIGHT-OF-WAY
 - R. D. & D. - ROAD, DYKE AND DITCH RESERVATION
 - S.T. - SURVEY TIE
 - SIRC - SET 5/8" IRON ROD & CAP STAMPED "PRM LB7741"
 - SN&D - SET MAGNETIC NAIL & DISK STAMPED "PRM LB7741"
 - TYP - TYPICAL
 - U.E. - UTILITY EASEMENT
 - N=780000.00
 - E=930000.00

NOTE:
COORDINATES SHOWN ARE GRID COORDINATES DATUM = NAD 83 (1990 ADJUSTMENT)
ZONE = FLORIDA EAST ZONE
LINEAR UNIT = U.S. SURVEY FEET
COORDINATE SYSTEM = 1983 STATE PLANE TRANSVERSE MERCATOR PROJECTION
ALL DISTANCES ARE GROUND (UNLESS OTHERWISE NOTED)
SCALE FACTOR = 1.0002237
PLAT BEARING = GRID BEARING
GROUND DISTANCE X SCALE FACTOR = GRID DISTANCE



THIS INSTRUMENT WAS PREPARED BY
PERRY C. WHITE, P.S.M. 4213, STATE OF FLORIDA
SAND & HILLS SURVEYING, INC.
8461 LAKE WORTH ROAD, SUITE 410
LAKE WORTH, FLORIDA 33467
LB-7741