

# ANNA LANE

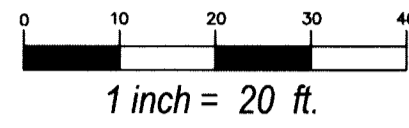
BEING A REPLAT OF LOTS 3, 4, 5 AND 6, BLOCK 2, ANNA-JOHNS ESTATES,  
PLAT BOOK 23, PAGE 219, SECTION 13, TOWNSHIP 44 SOUTH, RANGE 42 EAST,  
VILLAGE OF PALM SPRINGS, PALM BEACH COUNTY, FLORIDA.

SHEET 1 OF 2

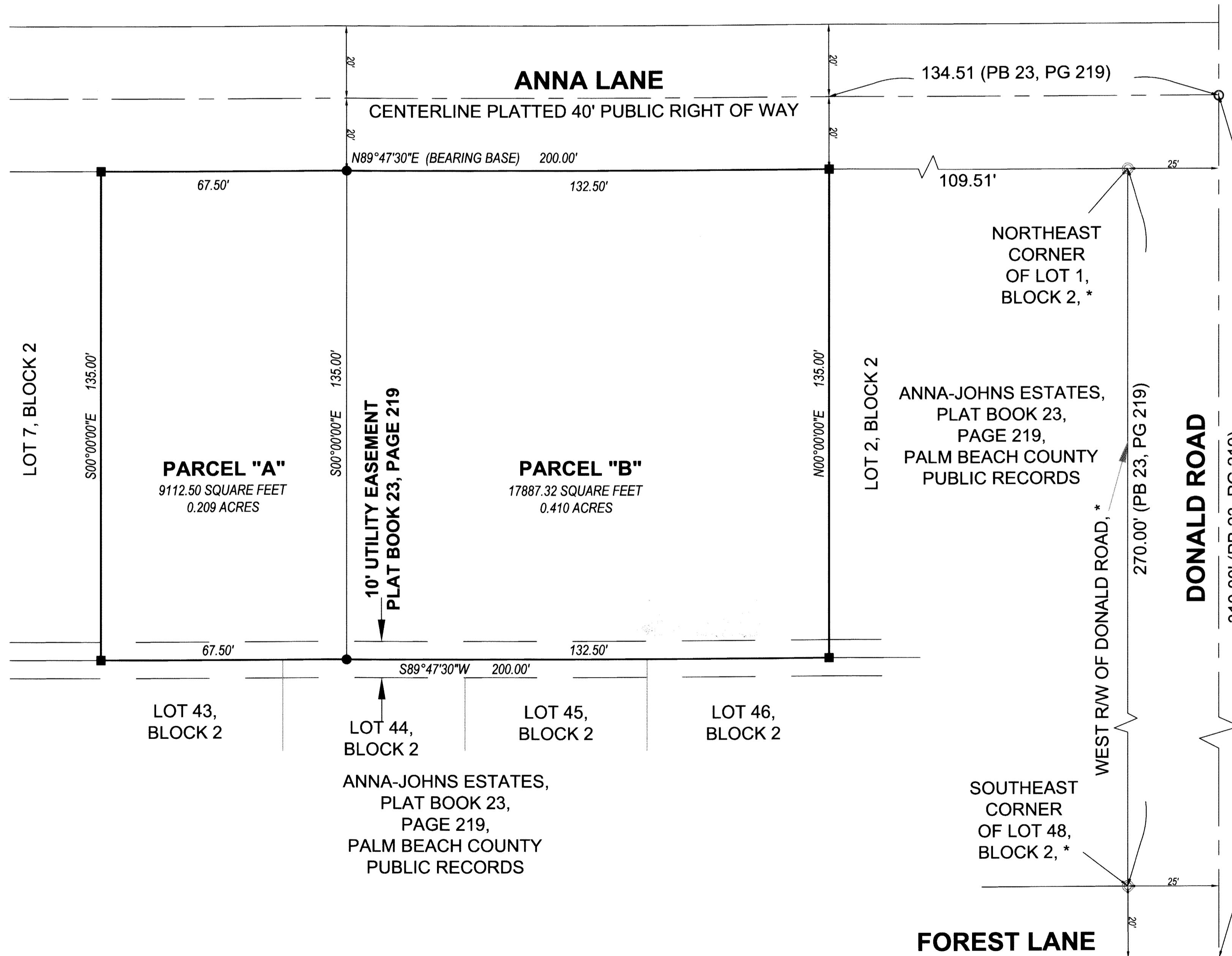
73



GRAPHIC SCALE



ANNA-JOHNS ESTATES,  
PLAT BOOK 23,  
PAGE 219,  
PALM BEACH COUNTY  
PUBLIC RECORDS



\* ABBREVIATIONS:  
PSM = PROFESSIONAL SURVEYOR & MAPPER  
LB = LICENSED BUSINESS  
PB = PLAT BOOK  
ORB = OFFICIAL RECORD BOOK  
PG = PAGE  
SQ. FT. = SQUARE FEET  
PRM = PERMANENT REFERENCE MONUMENT  
LS = LICENSED SURVEYOR  
ID = IDENTIFICATION

LEGEND  
■ SET 4"x4" CONCRETE MONUMENT AND BRASS DISK \*PRM LB 6788"  
● SET IRON ROD AND CAP \*LB 8261"  
○ FOUND NAIL AND DISK/ FOUND IRON ROD

PRINCIPAL MERIDIAN SURVEYING, INC.  
LB # 8261  
4546 CAMBRIDGE STREET  
WEST PALM BEACH, FL. 33415  
(561) 478-7764 FAX 478-1094  
VISIT US AT PMSURVEYING.NET  
JOB # 19030243